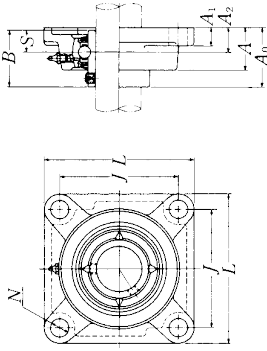


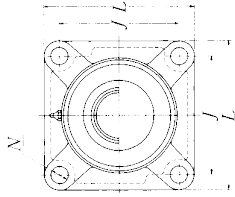
UCF2

Square flanged unit, cast housing
Set screw type

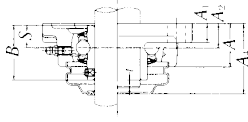


Shaft dia. mm inch	Unit number (1)	Nominal dimensions mm inch										Bolt size mm inch	Bearing number
		L	J	A ₂	A ₁	A	N	A ₀	B	S			
12 1/2	UCF201D1	86	64	15	11	25.5	12	33.3	31	12.7	M10	UC201D1	
	UCF201-008D1	3 3/8	2 3/64	19/32	7/16	1	15/32	1.2205	0.500	3/8	UC201-008D1		
	UCF202D1	86	64	15	11	25.5	12	33.3	31	12.7	M10	UC202D1	
15 9/16 5/8	UCF202-009D1	3 3/8	2 3/64	19/32	7/16	1	15/32	1.2205	0.500	3/8	UC202-009D1		
	UCF202-010D1	86	64	15	11	25.5	12	33.3	31	12.7	M10	UC202-010D1	
	UCF203D1	86	64	15	11	25.5	12	33.3	31	12.7	M10	UC203D1	
17 11/16	UCF203-011D1	3 3/8	2 3/64	19/32	7/16	1	15/32	1.2205	0.500	3/8	UC203-011D1		
	UCF204D1	86	64	15	11	25.5	12	33.3	31	12.7	M10	UC204D1	
	UCF204-012D1	3 3/8	2 3/64	19/32	7/16	1	15/32	1.2205	0.500	3/8	UC204-012D1		
25 1 1/8 7/8 1 1/16 1	UCF205D1	95	70	16	13	27	12	35.8	34.1	14.3	M10	UC205D1	
	UCF205-013D1	3 3/8	2 3/64	19/32	7/16	1	15/32	1.2205	0.500	3/8	UC205-013D1		
	UCF205-014D1	95	70	16	13	27	12	35.8	34.1	14.3	M10	UC205-014D1	
	UCF205-015D1	3 3/8	2 3/64	19/32	7/16	1	15/32	1.2205	0.500	3/8	UC205-015D1		
	UCF205-100D1	95	70	16	13	27	12	35.8	34.1	14.3	M10	UC205-100D1	
30 1 1/8 1 1/16 1 3/16 1 1/4	UCF206D1	108	83	18	13	31	12	40.2	38.1	15.9	M10	UC206D1	
	UCF206-101D1	4 1/4	3 3/64	45/64	1/2	1 1/32	15/32	1 5/64	1.5000	0.626	3/8	UC206-101D1	
	UCF206-102D1	108	83	18	13	31	12	40.2	38.1	15.9	M10	UC206-102D1	
	UCF206-103D1	4 1/4	3 3/64	45/64	1/2	1 1/32	15/32	1 5/64	1.5000	0.626	3/8	UC206-103D1	
	UCF206-104D1	108	83	18	13	31	12	40.2	38.1	15.9	M10	UC206-104D1	
35 1 1/4 1 5/16 1 3/8 1 7/8	UCF207D1	117	92	19	15	34	14	44.4	42.9	17.5	M12	UC207D1	
	UCF207-104D1	4 1/2	3 5/8	3/4	19/32	1 1/32	5/64	1 3/4	1.6890	0.689	7/16	UC207-104D1	
	UCF207-105D1	117	92	19	15	34	14	44.4	42.9	17.5	M12	UC207-105D1	
	UCF207-106D1	4 1/2	3 5/8	3/4	19/32	1 1/32	5/64	1 3/4	1.6890	0.689	7/16	UC207-106D1	
	UCF207-107D1	117	92	19	15	34	14	44.4	42.9	17.5	M12	UC207-107D1	
40 1 1/2 1 9/16	UCF208D1	130	102	21	15	36	16	51.2	49.2	19	M14	UC208D1	
	UCF208-108D1	5 1/8	4 1/64	83/64	19/32	1 19/32	5/8	2 1/64	1.9370	0.748	1/2	UC208-108D1	
	UCF208-109D1	130	102	21	15	36	16	51.2	49.2	19	M14	UC208-109D1	
45 1 5/8 1 11/16 1 3/4	UCF209D1	137	105	22	16	38	16	52.2	49.2	19	M14	UC209D1	
	UCF209-110D1	5 13/32	4 3/64	85/64	5/8	1 1/2	5/8	2 1/6	1.9370	0.748	1/2	UC209-110D1	
	UCF209-111D1	137	105	22	16	38	16	52.2	49.2	19	M14	UC209-111D1	
UCF209-112D1	5 13/32	4 3/64	85/64	5/8	1 1/2	5/8	2 1/6	1.9370	0.748	1/2	UC209-112D1		

Note (1) These numbers indicate relubricatable type. If maintenance free type is needed, please order without suffix "D1".
Remarks Please refer to page A21 for size of grease fitting.



Pressed steel dust cover type
Open end Z-UCF...D1
Closed end ZM-UCF...D1

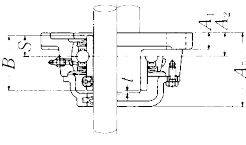
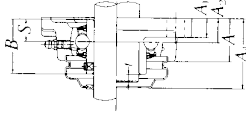
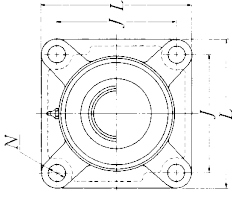
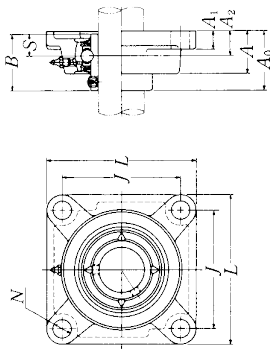


Cast dust cover type
Open end C-UCF...D1
Closed end CM-UCF...D1

Housing number	Unit number (1) pressed steel dust cover type	Unit number (1) cast dust cover type	Nominal dimensions			Mass of unit	
			t max.	A ₄ mm inch	A ₅ mm inch	kg	lb
F204D1	Z(ZM)-UCF201D1	C(CM)-UCF201D1	2	38	46	0.6	0.8
F204D1	Z(ZM)-UCF201-008D1	C(CM)-UCF201-008D1	5/64	1 1/2	1 13/16	1.3	1.8
F204D1	Z(ZM)-UCF202D1	C(CM)-UCF202D1	2	38	46	0.6	0.8
F204D1	Z(ZM)-UCF202-009D1	C(CM)-UCF202-009D1	5/64	1 1/2	1 13/16	1.3	1.8
F204D1	Z(ZM)-UCF202-010D1	C(CM)-UCF202-010D1	5/64	1 1/2	1 13/16	1.3	1.8
F204D1	Z(ZM)-UCF203D1	C(CM)-UCF203D1	2	38	46	0.6	0.8
F204D1	Z(ZM)-UCF203-011D1	C(CM)-UCF203-011D1	5/64	1 1/2	1 13/16	1.3	1.8
F204D1	Z(ZM)-UCF204D1	C(CM)-UCF204D1	2	38	46	0.6	0.8
F204D1	Z(ZM)-UCF204-012D1	C(CM)-UCF204-012D1	5/64	1 1/2	1 13/16	1.3	1.5
F205D1	Z(ZM)-UCF205D1	C(CM)-UCF205D1	2	40	51	0.8	0.9
F205D1	Z(ZM)-UCF205-013D1	C(CM)-UCF205-013D1	5/64	1 5/8	2	1.8	2.0
F205D1	Z(ZM)-UCF205-014D1	C(CM)-UCF205-014D1	5/64	1 5/8	2	1.8	2.0
F205D1	Z(ZM)-UCF205-015D1	C(CM)-UCF205-015D1	5/64	1 5/8	2	1.8	2.0
F205D1	Z(ZM)-UCF205-100D1	C(CM)-UCF205-100D1	5/64	1 5/8	2	1.8	2.0
F206D1	Z(ZM)-UCF206D1	C(CM)-UCF206D1	2	45	56	1.1	1.3
F206D1	Z(ZM)-UCF206-101D1	C(CM)-UCF206-101D1	5/64	1 3/4	2 3/32	2.4	2.9
F206D1	Z(ZM)-UCF206-102D1	C(CM)-UCF206-102D1	5/64	1 3/4	2 3/32	2.4	2.9
F206D1	Z(ZM)-UCF206-103D1	C(CM)-UCF206-103D1	5/64	1 3/4	2 3/32	2.4	2.9
F206D1	Z(ZM)-UCF206-104D1	C(CM)-UCF206-104D1	5/64	1 3/4	2 3/32	2.4	2.9
F207D1	Z(ZM)-UCF207D1	C(CM)-UCF207D1	3	49	59	1.5	1.8
F207D1	Z(ZM)-UCF207-104D1	C(CM)-UCF207-104D1	1/8	1 15/16	2 5/16	3.3	4.0
F207D1	Z(ZM)-UCF207-105D1	C(CM)-UCF207-105D1	1/8	1 15/16	2 5/16	3.3	4.0
F207D1	Z(ZM)-UCF207-106D1	C(CM)-UCF207-106D1	1/8	1 15/16	2 5/16	3.3	4.0
F207D1	Z(ZM)-UCF207-107D1	C(CM)-UCF207-107D1	1/8	1 15/16	2 5/16	3.3	4.0
F208D1	Z(ZM)-UCF208D1	C(CM)-UCF208D1	3	56	66	1.7	2.2
F208D1	Z(ZM)-UCF208-108D1	C(CM)-UCF208-108D1	1/8	2 3/16	2 9/32	3.7	4.9
F208D1	Z(ZM)-UCF208-109D1	C(CM)-UCF208-109D1	1/8	2 3/16	2 9/32	3.7	4.9
F209D1	Z(ZM)-UCF209D1	C(CM)-UCF209D1	3	57	70	2.1	2.6
F209D1	Z(ZM)-UCF209-110D1	C(CM)-UCF209-110D1	1/8	2 1/4	2 3/4	4.6	5.7
F209D1	Z(ZM)-UCF209-111D1	C(CM)-UCF209-111D1	1/8	2 1/4	2 3/4	4.6	5.7
F209D1	Z(ZM)-UCF209-112D1	C(CM)-UCF209-112D1	1/8	2 1/4	2 3/4	4.6	5.7

UCF2

Square flanged unit, cast housing
Set screw type



Pressed steel dust cover type
Open end Z-UCF...D1
Closed end ZM-UCF...D1

Cast dust cover type
Open end C-UCF...D1
Closed end CM-UCF...D1

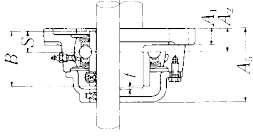
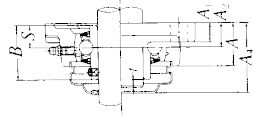
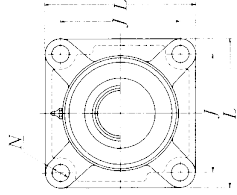
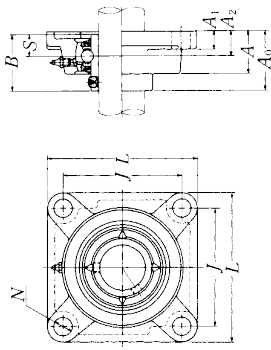
Shaft dia. mm inch	Unit number (1)	Nominal dimensions mm inch										Bearing number	Bolt size mm inch
		L	J	A ₂	A ₁	A	N	A ₀	B	S	A ₅		
50 1 9/16 1 7/8 1 15/16 2	UCF210D1	143	111	22	16	40	16	54.6	51.6	19		UC210D1	M14
	UCF210-113D1											UC210-113D1	
	UCF210-114D1	5 5/8	4 3/8	55/64	5/8	1 9/16	5/8	2 5/32	2.0315	0.748		UC210-114D1	1/2
	UCF210-115D1											UC210-115D1	
55 2 2 1/16 2 1/8 2 3/16	UCF210-200D1											UC210-200D1	
	UCF211D1	162	130	25	18	43	19	58.4	55.6	22.2		UC211D1	M16
	UCF211-200D1											UC211-200D1	
	UCF211-201D1	6 3/8	5 1/8	83/64	29/32	1 11/16	3/4	2 19/64	2.1890	0.874		UC211-201D1	5/8
60 2 1/4 2 5/8 2 7/8 2 11/8	UCF211-202D1											UC211-202D1	
	UCF211-203D1											UC211-203D1	
	UCF212D1	175	143	29	18	48	19	68.7	65.1	25.4		UC212D1	M16
	UCF212-204D1											UC212-204D1	
65 2 1/2 2 5/8 2 7/8 2 11/8	UCF212-205D1	6 7/8	5 5/8	1 9/64	29/32	1 7/8	3/4	2 45/64	2.5630	1.000		UC212-205D1	5/8
	UCF212-206D1											UC212-206D1	
	UCF212-207D1											UC212-207D1	
	UCF213D1	187	149	30	22	50	19	69.7	65.1	25.4		UC213D1	M16
70 2 5/8 2 7/8 2 11/8 2 13/8	UCF213-208D1	7 3/8	5 5/64	1 3/16	7/8	1 31/32	3/4	2 3/4	2.5630	1.000		UC213-208D1	5/8
	UCF213-209D1											UC213-209D1	
	UCF214D1	193	152	31	22	54	19	75.4	74.6	30.2		UC214D1	M16
	UCF214-210D1											UC214-210D1	
75 2 7/8 2 11/8 2 13/8 3	UCF214-211D1	7 19/32	5 5/64	1 7/32	7/8	2 1/8	3/4	2 31/32	2.9370	1.189		UC214-211D1	5/8
	UCF214-212D1											UC214-212D1	
	UCF215D1	200	159	34	22	56	19	78.5	77.8	33.3		UC215D1	M16
	UCF215-213D1											UC215-213D1	
80 3 1/8 3 1/4 3 3/8	UCF215-214D1	7 7/8	6 1/64	1 11/32	7/8	2 1/2	3/4	3 3/32	3.0630	1.311		UC215-214D1	5/8
	UCF215-215D1											UC215-215D1	
	UCF215-300D1											UC215-300D1	
	UCF216D1	208	165	34	22	58	23	83.3	82.6	33.3		UC216D1	M20
85 3 1/4 3 3/8	UCF216-301D1											UC216-301D1	
	UCF216-302D1	8 3/8	6 1/2	1 11/32	7/8	2 3/8	29/32	3 9/32	3.2520	1.311		UC216-302D1	3/4
	UCF216-303D1											UC216-303D1	

Note (1) These numbers indicate relubricatable type. If maintenance free type is needed, please order without suffix "D1".
Remarks Please refer to page A21 for size of grease fitting.

Housing number	Unit number (1) pressed steel dust cover type	Unit number (1) cast dust cover type	Nominal dimensions			Mass of unit				
			t max.	mm inch	A ₄	A ₅	kg lb	Z(ZM)	C(CM)	
F210D1	Z(ZM)-UCF210D1	C(CM)-UCF210D1	3	60	72	2.5	2.5	3.0	UCF	
F210D1	Z(ZM)-UCF210-113D1	C(CM)-UCF210-113D1								
F210D1	Z(ZM)-UCF210-114D1	C(CM)-UCF210-114D1	1/8	2 3/8	2 7/32	5.5	5.5	6.6		
F210D1	Z(ZM)-UCF210-115D1	C(CM)-UCF210-115D1								
F210D1	Z(ZM)-UCF210-200D1	C(CM)-UCF210-200D1								
F211D1	Z(ZM)-UCF211D1	C(CM)-UCF211D1	4	64	75	3.3	3.4	4.0		
F211D1	Z(ZM)-UCF211-200D1	C(CM)-UCF211-200D1								
F211D1	Z(ZM)-UCF211-201D1	C(CM)-UCF211-201D1	5/32	2 1/2	2 15/16	7.3	7.5	8.8		
F211D1	Z(ZM)-UCF211-202D1	C(CM)-UCF211-202D1								
F211D1	Z(ZM)-UCF211-203D1	C(CM)-UCF211-203D1								
F212D1	Z(ZM)-UCF212D1	C(CM)-UCF212D1	4	74	86	3.9	4.1	4.8		
F212D1	Z(ZM)-UCF212-204D1	C(CM)-UCF212-204D1								
F212D1	Z(ZM)-UCF212-205D1	C(CM)-UCF212-205D1	5/32	2 9/32	3 3/8	8.6	9.0	11		
F212D1	Z(ZM)-UCF212-206D1	C(CM)-UCF212-206D1								
F212D1	Z(ZM)-UCF212-207D1	C(CM)-UCF212-207D1								
F213D1	Z(ZM)-UCF213D1	C(CM)-UCF213D1	4	76	90	5.5	5.6	6.4		
F213D1	Z(ZM)-UCF213-208D1	C(CM)-UCF213-208D1	5/32	3	3 17/32	12	12	14		
F213D1	Z(ZM)-UCF213-209D1	C(CM)-UCF213-209D1								
F214D1	Z(ZM)-UCF214D1	C(CM)-UCF214D1	4	—	98	6.3	—	7.4		
F214D1	Z(ZM)-UCF214-210D1	C(CM)-UCF214-210D1								
F214D1	Z(ZM)-UCF214-211D1	C(CM)-UCF214-211D1	5/32	—	3 7/32	14	—	16		
F214D1	Z(ZM)-UCF214-212D1	C(CM)-UCF214-212D1								
F215D1	Z(ZM)-UCF215D1	C(CM)-UCF215D1	4	—	102	6.6	—	7.9		
F215D1	Z(ZM)-UCF215-213D1	C(CM)-UCF215-213D1								
F215D1	Z(ZM)-UCF215-214D1	C(CM)-UCF215-214D1	5/32	—	4 1/32	15	—	17		
F215D1	Z(ZM)-UCF215-215D1	C(CM)-UCF215-215D1								
F215D1	Z(ZM)-UCF215-300D1	C(CM)-UCF215-300D1								
F216D1	Z(ZM)-UCF216D1	C(CM)-UCF216D1	4	—	106	7.9	—	9.3		
F216D1	Z(ZM)-UCF216-301D1	C(CM)-UCF216-301D1								
F216D1	Z(ZM)-UCF216-302D1	C(CM)-UCF216-302D1	5/32	—	4 3/16	17	—	21		
F216D1	Z(ZM)-UCF216-303D1	C(CM)-UCF216-303D1								

UCF2

Square flanged unit, cast housing
Set screw type



Pressed steel dust cover type
Open end **Z**-UCF...D1
Closed end **ZM**-UCF...D1

Cast dust cover type
Open end **C**-UCF...D1
Closed end **CM**-UCF...D1

Shaft dia. mm inch	Unit number (1)	Nominal dimensions mm inch										Bolt size mm inch	Bearing number
		L	J	A ₂	A ₁	A	N	A ₀	B	S	A ₃		
85 3 1/4 3 5/16 3 7/16	UCF217D1	220	175	36	24	63	23	87.6	85.7	34.1		M20	UC217D1
	UCF217-304D1												UC217-304D1
	UCF217-305D1	8 3/16	6 5/16	1 27/64	1 5/16	2 15/32	2 1/2	3 29/64	3.3740	1.343		3/4	UC217-305D1
	UCF217-307D1												UC217-307D1
90 3 1/2	UCF218D1	235	187	40	24	68	23	96.3	96	39.7		M20	UC218D1
	UCF218-308D1	9 1/4	7 29/64	1 37/64	1 5/16	2 1/16	2 1/2	3 57/64	3.7795	1.563		3/4	UC218-308D1

Note (1) These numbers indicate relubricatable type. If maintenance free type is needed, please order without suffix "D1".
Remarks Please refer to page A21 for size of grease fitting.

Housing number	Unit number (1) pressed steel dust cover type	Unit number (1) cast dust cover type	Nominal dimensions			Mass of unit	
			t max. mm	A ₄ inch	A ₅ inch	UCF	Z(ZM) C(CM)
F217D1	—	CCM -UCF217D1	5	—	114	9.8	12
F217D1	—	CCM -UCF217-304D1	13/64	—	4 1/2	22	26
F217D1	—	CCM -UCF217-305D1					
F217D1	—	CCM -UCF217-307D1					
F218D1	—	CCM -UCF218D1	5	—	122	12	13
F218D1	—	CCM -UCF218-308D1	13/64	—	4 13/16	26	29