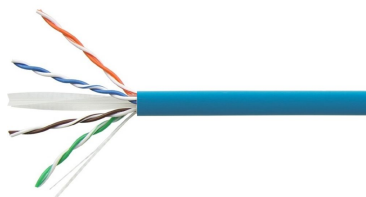


1427254-6 | CS31CM BLU C6 4/23 U/UTP RIB 305M



Copper Cable, category 6, 4 pair, UTP, CM rated, 23 AWG, 305 m RIB, blue

Product Classification

Regional Availability	Asia Latin America
Portfolio	NETCONNECT®
Product Type	Twisted pair cable

General Specifications

Product Number	CS31CM
ANSI/TIA Category	6
Cable Component Type	Horizontal
Cable Type	U/UTP (unshielded)
Conductor Type, singles	Solid
Conductors, quantity	8
Jacket Color	Blue
Pairs, quantity	4
Transmission Standards	ANSI/TIA-568.2-D CENELEC EN 50288-6-1 ISO/IEC 11801 Class E

Dimensions

Cable Length	304.8 m 1000 ft
Diameter Over Insulated Conductor	1.029 mm 0.041 in
Diameter Over Jacket, nominal	6.401 mm 0.252 in
Conductor Gauge, singles	23 AWG

Electrical Specifications

Operating Voltage, maximum	80 V
Remote Powering	Fully complies with the recommendations set forth by IEEE 802.3bt (Type 4) for the safe delivery of power over LAN cable when installed according to ISO/IEC 14763-2, CENELEC

EN 50174-1, CENELEC EN 50174-2 or TIA TSB-184-A

Material Specifications

Conductor Material	Bare copper
Insulation Material	Polyolefin
Jacket Material	PVC

Environmental Specifications

Operating Temperature	-20 °C to +60 °C (-4 °F to +140 °F)
Flame Test Method	CM

Packaging and Weights

Packaging Type	Reel in box
-----------------------	-------------

Regulatory Compliance/Certifications

Agency	Classification
CHINA-ROHS	Below maximum concentration value
REACH-SVHC	Compliant as per SVHC revision on www.commscope.com/ProductCompliance
ROHS	Compliant

