

侧边安装外露式铰链

Side prominent Hinge



HL001系列

HL003系列

HL008系列

HL047系列

HL073系列

HL089系列



页码
Page G035



页码
Page G033



页码
Page G038



页码
Page G044



页码
Page G40



页码
Page G41

HL003



HL003-1



HL003-2

- 材质：铸合金钢、静铰链，分不锈钢和镀锌铰链。
- 表面处理：镀亮铬，喷无光黑。
- 备注：转动约180°。
- Material: Zinc die-casting hinge, stainless steel and nickel plating steel pin are available
- Finish: Bright chrome plating Black powder coated
- Remark: 180° hinge

HL003-2A

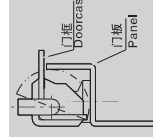
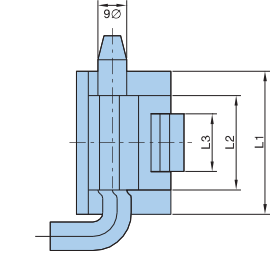


- 材质：铸合金钢、碳铰链，碳铰链子。
- 表面处理：喷无光黑。
- 备注：可开角180°。
- Material: Zinc die-casting hinge
- Finish: black powder coated
- Remark: 180° hinge

G033

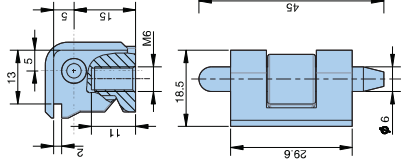
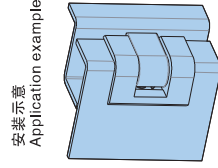
益升华恒球 电话(TEL): 400 997 8777 E-mail: Hengzhu@essentra.com

侧边安装外露式铰链 Side prominent Hinge



基本尺寸 Dimensions		产品型号及特性 Product Number	
H1	H2	喷无光黑 Black powder coated	产品 重量(g) Weight Lot
17.2	5.7	HL003-1.3	67 300
16	5.2	HL003-2.3	44 400
		HL003-1.1	67 300
		HL003-2.1	44 400

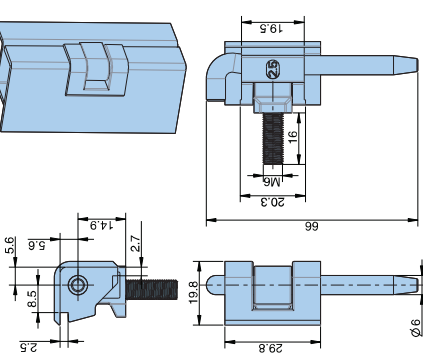
侧边安装外露式铰链 Side prominent Hinge



型号 Product no.	产品重量(g) Weight	装箱数 Lot
HL003-2A	56	400

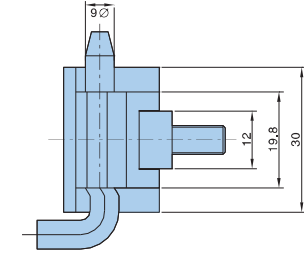
益升华恒球 电话(TEL): 400 997 8777 E-mail: Hengzhu@essentra.com

侧边安装外露式铰链 Side prominent Hinge



型号 Product no.	产品重量(g) Weight	装箱数 Lot
HL003-3	51	400

侧边安装外露式铰链 Side prominent Hinge



- 材质：铸合金钢、碳铰链，碳铰链子。
- 表面处理：喷无光黑。
- 备注：可开角180°。
- Material: Zinc die-casting hinge
- Finish: Matte black
- Remarks: 180° hinge

HL017-1



- 材质：铸合金钢、碳铰链，分不锈钢和镀锌铰链子及镀锌铰链子。
- 备注：转动约180°。
- Material: Zinc die-casting hinge, stainless steel and nickel plating steel pin are available
- Remark: 180° hinge

G034

益升华恒球 电话(TEL): 400 997 8777 E-mail: Hengzhu@essentra.com

HL001



- 材质：锌合金动、静铰链，分不锈钢和镀锌钢铰链
- 表面处理：喷无光黑
- 备注：转动约180°
- Material: Zinc die-casting hinge, stainless steel and nickel plating steel pin are available.
- Finish: Black powder coated
- Remark: 180° hinge.

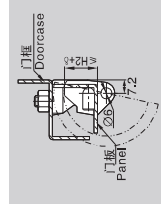
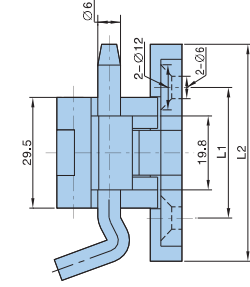
HL003-2C



- 材质：锌合金动、静铰链，分不锈钢和镀锌钢铰链
- 表面处理：喷无光黑
- 备注：转动约180°
- Material: Zinc die-casting hinge, stainless steel and nickel plating steel pin are available
- Finish: Black powder coated
- Remark: 180° hinge

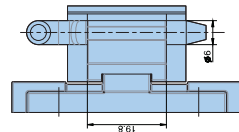
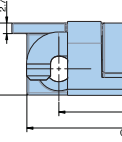
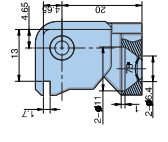
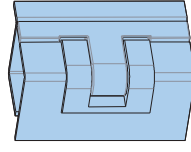
G035

侧边安装外露式铰链 Side prominent Hinge



基本尺寸		产品型号		产品	装箱数	
Dimensions		Product Number		单重(g)	Lot	
H1	H2	H3	H4	L1	L2	6
11.5	15.8	6.5	29	35	58	2
10	9.8	4.8	22	25	48	2, 2
						75
						101
						HL001-1
						200
						HL001-2
						300

侧边安装外露式铰链 Side prominent Hinge

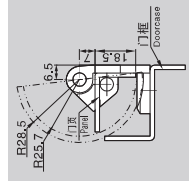
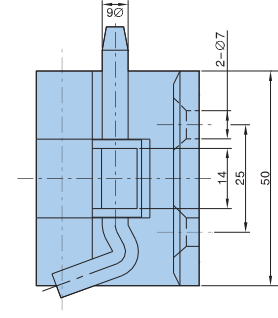


型号	Product no.	产品单重(g)	装箱数
		Weight	Lot
	HL003-2C		

益升华恒球 电话(TEL): 400 997 8777

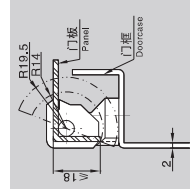
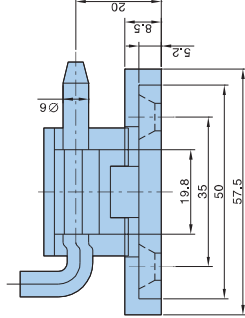
E-mail: hengzhu@essentra.com

侧边安装外露式铰链 Side prominent Hinge



型号	Product no.	产品单重(g)	装箱数
		Weight	Lot
	HL015	147	200

侧边安装外露式铰链 Side prominent Hinge



型号	Product no.	产品单重(g)	装箱数
		Weight	Lot
	HL016	85	300

益升华恒球 电话(TEL): 400 997 8777

E-mail: hengzhu@essentra.com

HL015



- 材质：锌合金动、静铰链，分不锈钢和镀锌钢铰链
- 表面处理：喷无光黑
- 备注：转动约180°
- Material: Zinc die-casting hinge, stainless steel and nickel plating steel pin are available
- Finish: Black powder coated
- Remark: 180° hinge.

HL016



- 材质：锌合金铰链，碳钢铰链
- 表面处理：喷无光黑
- 备注：可开启约180°
- Material: Zinc die-casting hinge
- Finish: black powder coated
- Remarks: 180° hinge

G036