

Ø 16 mm Mushroom-Head Push Button Switches



S16BR Series CATALOG

For your safety, read and follow the considerations written in the instruction manual, other manuals and Autonics website.

The specifications, dimensions, etc. are subject to change without notice for product improvement. Some models may be discontinued without notice.

Features

- Compact, space-saving 16 mm installation diameter
- Short rear-length size of only 29.5 mm
- Independent detachable contacts

Specifications

Series	S16BR Series
Actuation distance	3 mm
Actuation force	0.2 to 0.35 kgf (2 to 3.5 N)
Installation	Extended
Shock	500 m/s ² (≈ 30 G) in each X, Y, Z direction for 3 times
Shock (malfunction)	100 m/s ² (≈ 10 G) in each X, Y, Z direction for 3 times
Vibration	1.5 mm amplitude at frequency of 10 to 55 Hz (for 1 min) in each X, Y, Z direction for 2 hours
Vibration (malfunction)	1.5 mm amplitude at frequency of 10 to 55Hz (for 1 min) in each X, Y, Z direction for 10 minutes
Mechanical life cycle (control unit life cycle)	≥ 1 million operations (20 operations/min)
Ambient temperature	-15 to 55 °C, storage: -25 to 65 °C (no freezing or condensation)
Ambient humidity	35 to 85 %RH, storage: 35 to 85 %RH (no freezing or condensation)
Protection structure	Control unit: IP65 (IEC standard)
Approval	CE ⁰¹
Control unit weight	≈ 4.1 g
Housing weight	≈ 1.4 g

01) IEC-60947-5-1

Contact blocks

Power supply / current	250 VAC ~ / 3 A
Dielectric strength	2,000 VAC ~ 50/60 Hz for 1 minute (between other polarities), 1,000 VAC ~ 50/60 Hz for 1 minute (between same polarities)
Insulation resistance	≥ 100 MΩ (500 VDC == megger)
Contact resistance	≤ 50 mΩ (initial)
Electrical life cycle	≥ 100,000 operations (20 operations/min)
Contact material	AgNi10
Terminal tensile force	≤ 30 N
Terminal soldering time	At the end of tips within 3 sec with 350 °C (30 W-soldering machine)
Approval	CE
Weight	≈ 1.6 g

LED blocks

Rated voltage	5 / 12 / 24 VDC == model
Current consumption	Refer to the below Current consumption table.
Approval	CE
Weight	≈ 1.9 g

Current consumption	Red	Blue	Green	Yellow	White
SA16-L5□ (5 VDC ==)	6 to 9 mA	10 to 14 mA	5 to 7 mA	12 to 16 mA	10 to 14 mA
SA16-L12□ (12 VDC ==)	9 to 14 mA	10 to 15 mA	5 to 9 mA	10 to 16 mA	9 to 14 mA
SA16-L24□ (24 VDC ==)	15 to 20 mA	20 to 26 mA	16 to 22 mA	27 to 35 mA	23 to 30 mA

Sold Separately

- Contact blocks (SA□-C□□)
- LED blocks (SA□-L□□□)
- Locking handle (SA□-LH)

Ordering Information

This is only for reference. For selecting the specified model, follow the Autonics website.

Model is based on control unit+block combination. Control units or blocks are sold separately. In case of block, refer to control switch accessories.

■ Non-illuminated

S16BR	-	H	1	①	②
Control unit					Block

① Color

R: Red
G: Green

② Contact block

C: 1 C contact
2C: 2 C contacts
3C: 3 C contacts

Model	Contact block	LED block
	C contact	DC voltage
S16BR-H1□C	1	-
S16BR-H1□2C	2	
S16BR-H1□3C	3	

■ Illuminated

S16BR	-	H	3	①	②	③
Control unit					Block	

① Color

R: Red
G: Green

② Contact block

C: 1 C contact
2C: 2 C contacts

③ LED block

5: 5 VDC=
12: 12 VDC=
24: 24 VDC=

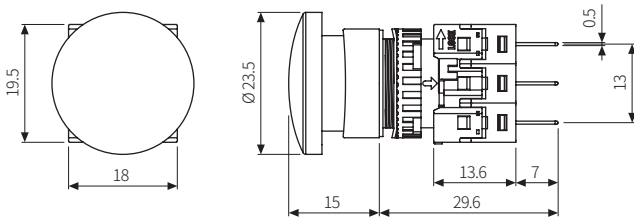
Model	Contact block	LED block
	C contact	DC voltage
S16BR-H3□C5	1	1 (5 VDC=)
S16BR-H3□C12		1 (12 VDC=)
S16BR-H3□C24		1 (24 VDC=)
S16BR-H3□2C5	2	1 (5 VDC=)
S16BR-H3□2C12		1 (12 VDC=)
S16BR-H3□2C24		1 (24 VDC=)

Dimensions

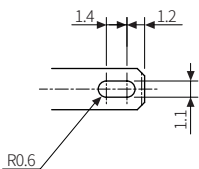
• Unit: mm, For the detailed drawings, follow the Autonics website.

• Panel thickness: ≤ 3.5 mm

■ S16BR-□



■ Terminal pin



■ Panel cut-out

