

RoHS 6
See page 2

Non stock item

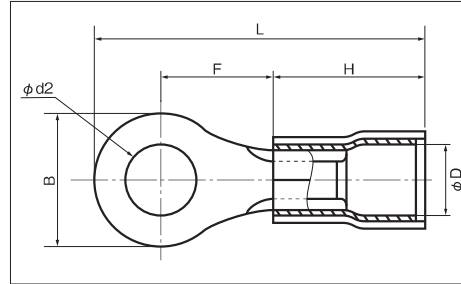
PART NUMBER	DIMENSIONS mm						WIRE RANGE		TOOL No.		STD COLOR	STD QTY/BOX
	φ d2	B	L	F	H	φ D	STRANDED mm ²	AWG	HAND TOOL No.			
									TOOL BODY No.	DIES No.		
TMDV 1.25-2	2.2	5.5	17.5	4.7	10.0	4.0	0.3 ∩ 1.65	22-16	NH 11 NH 32	RED	1,000 (100×10)	
TMDV 1.25-2S		5.7	17.4	4.5								
TMDV 1.25-3	3.2	5.5	17.5	4.7								
TMDV 1.25-3N		5.6	20.4	7.6								
TMDV 1.25-3S	3.7	5.7	17.4	4.5								
TMDV 1.25-3.5N		5.6	20.4	7.6								
TMDV 1.25-3.5S		5.7	17.4	4.5								
TMDV 1.25-3.5		6.6	18.8	5.5								
TMDV 1.25-3.5M	3.7	6.8	19.4	6.0								
TMDV 1.25-3.5L		8.0	21.1	7.1								
TMDV 1.25-4M	4.3	6.8	19.4	6.0								
TMDV 1.25-4		8.0	21.1	7.1								
TMDV 1.25-5	5.3	12.0	25.7	9.7								
TMDV 1.25-6	6.4											
TMDV 1.25-8	8.4											
TMDV 1.25-10	10.5	16.5	30.5	12.2					NA 10	N10 21		
TMDV 2-2	2.2	6.5	18.2	4.9	10.0	4.3	1.04 ∩ 2.63	16-14	NH 12 NH 32	BLUE	1,000 (100×10)	
TMDV 2-3N		5.6	20.4	7.6								
TMDV 2-3S	3.2	5.7	17.8	4.9								
TMDV 2-3		6.5	18.2									
TMDV 2-3.5N	3.7	5.6	20.4	7.6								
TMDV 2-3.5NS		6.5	18.2	4.9								
TMDV 2-3.5		6.6	19.9	6.6								
TMDV 2-3.5S		6.6	20.9	7.6								
TMDV 2-3.5M	3.7	8.0	21.5	7.5								
TMDV 2-4S		6.6	19.9	6.6								
TMDV 2-4	4.3	8.5	22.0	7.7								
TMDV 2-4M		8.0	21.5	7.5								
TMDV 2-5M	5.3	9.5	22.5	7.7								
TMDV 2-5												
TMDV 2-6	6.4	12.0	27.0	11.0								
TMDV 2-8	8.4											
TMDV 2-10	10.5											
TMDV 2-12	13.0	19.0	34.0	14.5					NA 10	N10 22		

NOTE

- : UL/CSA INSULATOR MATERIAL
- Refer to page 41 for UL/CSA, insulator material/color, proper strip length of wire and Nylon insulated products.
- TMDEN Type is also available, see page 42.

INSULATED RING TERMINALS WITH EXTRA COPPER SLEEVE (R TYPE)

TMDV : Vinyl



B

RoHS 6
See page 2

Non stock item

PART NUMBER	DIMENSIONS mm						WIRE RANGE		TOOL No.		STD COLOR	STD QTY/BOX
	φd2	B	L	F	H	φD	STRANDED mm ²	AWG	HAND TOOL No.	DIES No.		
TMDV 5.5-3M ○	3.2	6.5	24.4	7.2	14.0	6.0	2.63 }	12-10	NH 13		YELLOW	100
TMDV 5.5-3N ○		7.0	24.7									
TMDV 5.5-3S ○		9.0	25.7									
TMDV 5.5-3.5N ○	3.7	7.0	24.7									
TMDV 5.5-3.5S ○		9.0	25.7									
TMDV 5.5-3.5 ○		9.5	27.0	8.2								
TMDV 5.5-4N ○	4.3	7.0	24.7	7.2								
TMDV 5.5-4S ○		9.0	25.7									
TMDV 5.5-4 ○		9.5	27.0									
TMDV 5.5-5N ○	5.3	8.0	25.2	7.2								
TMDV 5.5-5S ○		9.0	25.7									
TMDV 5.5-5 ○		9.5	27.0									
TMDV 5.5-6 ○	6.4	12.0	30.5	10.5								
TMDV 5.5-8 ○	8.4	15.0	35.5	14.0								
TMDV 5.5-10 ○	10.5											
TMDV 5.5-12 ○	13.0											
TMDV 5.5-14 ○	15.0	19.2	40.0	16.4				NA 10	N10 23		50	

NOTE

- : UL/CSA
- Refer to page 41 for UL/CSA, proper strip length of wire.
- TMDEN Type is also available, see page 42.