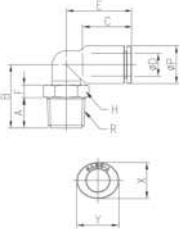


**GPL**  
Male Elbow



MODEL[ØD-T] Tube(Metric)-Thread(R)

MODEL	ØD	R	ØP	A	B	C	E	F	H	X	Y	ØC(Ømm)	W.G(g)	Qty./box
GPL 03M3	3	M3	9	3	14.6	14.5	17.1	5.4	9	8.6	10.8	1.2	4.5	100
GPL 03M5	3	M5	9	4	14.6	14.5	17.1	4.4	9	8.6	10.8	2	4.7	100
GPL 03M6	3	M6	9	5	15.6	14.5	17.1	4.4	9	8.6	10.8	2.5	5.2	100
GPL 04M3	4	M3	9	3	14.6	14.5	17.1	5.4	9	8.6	10.8	1.2	4.4	100
GPL 04M5	4	M5	9	4	14.6	14.5	17.1	4.4	9	8.6	10.8	2	4.6	100
GPL 04M6	4	M6	9	5	15.6	14.5	17.1	4.4	9	8.6	10.8	3	5.0	100
GPL 0401	4	R1/8	9	8	17.8	14.5	17.1	5	10	8.6	10.8	3.2	7.9	100
GPL 0402	4	R1/4	9	11	20.8	14.5	17.1	5	14	8.6	10.8	3.2	17.0	100
GPL 0403	4	R3/8	9	12	21.8	14.5	17.1	5	17	8.6	10.8	3.2	26.4	50
GPL 06M5	6	M5	11.2	4	15.7	15.5	18	4.4	9	11	13	2	5.4	100
GPL 06M6	6	M6	11.2	5	16.7	15.5	18	4.4	9	11	13	3	5.9	100
GPL 0601	6	R1/8	11.2	8	18.9	15.5	18	5	10	11	13	4	8.7	100
GPL 0602	6	R1/4	11.2	11	21.9	15.5	18	5	14	11	13	4	17.8	50
GPL 0603	6	R3/8	11.2	12	22.9	15.5	18	5	17	11	13	4	27.2	50
GPL 0604	6	R1/2	11.2	15	26.9	15.5	18	6	21	11	13	4	49.5	25
GPL 0801	8	R1/8	13.6	8	20.3	17.8	23.6	5	10	13	15	5.5	10.4	50
GPL 0802	8	R1/4	13.6	11	22.8	17.8	23.6	4.5	14	13	15	5.5	19.1	50
GPL 0803	8	R3/8	13.6	12	23.8	17.8	23.6	4.5	17	13	15	5.5	28.4	50
GPL 0804	8	R1/2	13.6	15	27.8	17.8	23.6	5.5	21	13	15	5.5	50.7	25
GPL 1001	10	R1/8	16.3	8	23.6	19.4	25	6.5	17	16	18.5	6	20.8	50
GPL 1002	10	R1/4	16.3	11	26.6	19.4	25	6.5	17	16	18.5	8	25.5	25
GPL 1003	10	R3/8	16.3	12	26.1	19.4	25	5	17	16	18.5	9	27.5	25
GPL 1004	10	R1/2	16.3	15	29.1	19.4	25	5	21	16	18.5	9	47.2	25
GPL 1201	12	R1/8	19.7	8	25.5	22.4	32.2	6.5	17	19.5	22.5	6	26.4	25
GPL 1202	12	R1/4	19.7	11	28.5	22.4	32.2	6.5	17	19.5	22.5	8	31.1	25
GPL 1203	12	R3/8	19.7	12	28	22.4	32.2	5	17	19.5	22.5	9.5	33.1	25
GPL 1204	12	R1/2	19.7	15	31	22.4	32.2	5	21	19.5	22.5	9.5	52.8	25
GPL 1403	14	R3/8	23.5	12	35	24.4	31.9	10.5	20	23	25	11	52.7	20
GPL 1404	14	R1/2	23.5	15	37.5	24.4	31.9	10	21	23	25	12	67.0	20
GPL 1603	16	R3/8	25.6	12	36	25	34	10.5	20	24	27	11	52.9	20
GPL 1604	16	R1/2	25.6	15	38.5	25	34	10	21	24	27	13	67.2	20

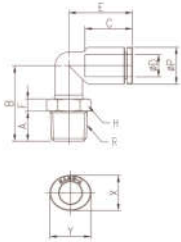
\*Rotating body construction after a proper installation.

MODEL[ØD-T] Tube(Metric)-Thread(R)

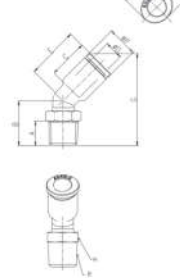
MODEL	ØD	R	ØP	A	B	C	E	F	H	X	Y	ØC(Ømm)	W.G(g)	Qty./box
GPL 04M3(L)	4	M3	9	3	17.8	14.5	17.1	5.4	9	8.6	10.8	1.2	4.0	100
GPL 04M5(L)	4	M5	9	4	17.8	14.5	17.1	4.4	9	8.6	10.8	2	4.2	100
GPL 04M6(L)	4	M6	9	5	18.8	14.5	17.1	4.4	9	8.6	10.8	3	4.6	100
GPL 0401(L)	4	R1/8	9	8	21	14.5	17.1	5	10	8.6	10.8	3.2	7.2	100
GPL 0402(L)	4	R1/4	9	11	24	14.5	17.1	5	14	8.6	10.8	3.2	15.5	100
GPL 0403(L)	4	R3/8	9	12	25	14.5	17.1	5	17	8.6	10.8	3.2	24.0	50
GPL 06M5(L)	6	M5	11.2	4	19.4	15.5	18	4.4	9	11	13	2	5.2	100
GPL 06M6(L)	6	M6	11.2	5	20.4	15.5	18	4.4	9	11	13	3	5.6	100
GPL 0601(L)	6	R1/8	11.2	8	22.6	15.5	18	5	10	11	13	4	8.2	100
GPL 0602(L)	6	R1/4	11.2	11	25.6	15.5	18	5	14	11	13	4	16.5	50
GPL 0603(L)	6	R3/8	11.2	12	26.6	15.5	18	5	17	11	13	4	25.0	50
GPL 0604(L)	6	R1/2	11.2	15	30.6	15.5	18	6	21	11	13	4	45.3	25
GPL 0801(L)	8	R1/8	13.6	8	25.3	17.8	23.6	5	10	13	15	5.5	9.3	50
GPL 0802(L)	8	R1/4	13.6	11	27.8	17.8	23.6	4.5	14	13	15	5.5	17.2	50
GPL 0803(L)	8	R3/8	13.6	12	28.8	17.8	23.6	4.5	17	13	15	5.5	25.6	50
GPL 0804(L)	8	R1/2	13.6	15	32.8	17.8	23.6	5.5	21	13	15	5.5	45.9	25
GPL 1001(L)	10	R1/8	16.3	8	29.7	19.4	25	6.5	17	16	18.5	6	21.9	50
GPL 1002(L)	10	R1/4	16.3	11	32.7	19.4	25	6.5	17	16	18.5	8	26.2	25
GPL 1003(L)	10	R3/8	16.3	12	32.2	19.4	25	5	17	16	18.5	9	28.0	25
GPL 1004(L)	10	R1/2	16.3	15	35.2	19.4	25	5	21	16	18.5	9	45.9	25
GPL 1201(L)	12	R1/8	19.7	8	31.4	22.4	32.2	6.5	17	19.5	22.5	6	24.6	25
GPL 1202(L)	12	R1/4	19.7	11	34.4	22.4	32.2	6.5	17	19.5	22.5	8	28.9	25
GPL 1203(L)	12	R3/8	19.7	12	33.9	22.4	32.2	5	17	19.5	22.5	9.5	30.7	25
GPL 1204(L)	12	R1/2	19.7	15	36.9	22.4	32.2	5	21	19.5	22.5	9.5	48.6	25

\*Rotating body construction after a proper installation.

**GPL(L)**  
Male Elbow



**GPL45**  
Male 45° Elbow



MODEL[ØD-T] Tube(Metric)-Thread(R)

MODEL	ØD	R	ØP	A	B	C	E	H	G	X	Y	ØC(Ømm)	W.G(g)	Qty./box
GPL45 04M5	4	M5	9.0	4	13.1	14.5	17.1	9	28.1	8.6	10.8	2	4.8	100
GPL45 04M6	4	M6	9.0	5	14.1	14.5	17.1	9	29.1	8.6	10.8	3	5.2	100
GPL45 0401	4	R1/8	9.0	8	16.3	14.5	17.1	10	31.3	8.6	10.8	3.2	7.8	100
GPL45 0402	4	R1/4	9.0	11	19.3	14.5	17.1	14	34.3	8.6	10.8	3.2	16.1	100
GPL45 0403	4	R3/8	9.0	12	20.3	14.5	17.1	17	35.3	8.6	10.8	3.2	24.6	50
GPL45 06M5	4	M5	11.2	4	13.7	15.5	18	9	30.1	11	13	2	5.0	100
GPL45 06M6	6	M6	11.2	5	14.7	15.5	18	9	31.1	11	13	3	5.4	100
GPL45 0601	6	R1/8	11.2	8	16.9	15.5	18	10	33.3	11	13	4	8.0	100
GPL45 0602	6	R1/4	11.2	11	19.9	15.5	18	14	36.3	11	13	4	16.3	50
GPL45 0603	6	R3/8	11.2	12	20.9	15.5	18	17	37.3	11	13	4	24.8	50
GPL45 0604	6	R1/2	11.2	15	24.9	15.5	18	21	41.3	11	13	4	45.1	50
GPL45 0801	6	R1/8	13.6	8	17.5	17.8	23.6	10	38.6	13	15	5.5	8.8	50
GPL45 0802	8	R1/4	13.6	11	20	17.8	23.6	14	41.1	13	15	5.5	16.7	50
GPL45 0803	8	R3/8	13.6	12	21	17.8	23.6	17	42.1	13	15	5.5	25.1	50
GPL45 0804	8	R1/2	13.6	15	25	17.8	23.6	21	46.1	13	15	5.5	45.4	25
GPL45 1001	8	R1/8	16.3	8	19.6	19.4	25	17	42.7	16	18.5	6	21.1	25
GPL45 1002	10	R1/4	16.3	11	22.6	19.4	25	17	45.7	16	18.5	8	25.4	25
GPL45 1003	10	R3/8	16.3	12	22.1	19.4	25	17	45.2	16	18.5	9	27.2	25
GPL45 1004	10	R1/2	16.3	15	25.1	19.4	25	21	48.2	16	18.5	9	45.1	25
GPL45 1201	12	R1/8	19.7	8	21.1	22.4	32.2	17	50.4	19.5	22.5	6	23.6	25
GPL45 1202	12	R1/4	19.7	11	24.1	22.4	32.2	17	53.4	19.5	22.5	8	27.9	25
GPL45 1203	12	R3/8	19.7	12	23.6	22.4	32.2	17	52.9	19.5	22.5	9.5	29.7	25
GPL45 1204	12	R1/2	19.7	15	26.6	22.4	32.2	21	55.9	19.5	22.5	9.5	47.6	25

MODEL[ØD-T] Tube(Metric)-Thread(R)

MODEL	ØD	R	ØP	A	B	C	E	F	G	H	X	Y	ØC(Ømm)	W.G(g)	Qty./box
GPT 03M3	3	M3	9	3	16.6	14.5	17.1	5.4	34.2	9	8.6	10.8	1.2	6.2	100
GPT 03M5	3	M5	9	4	16.6	14.5	17.1	4.4	34.2	9	8.6	10.8	2	6.4	100
GPT 03M6	3	M6	9	5	17.6	14.5	17.1	4.4	34.2	9	8.6	10.8	3	6.8	100
GPT 04M3	4	M3	9	3	16.6	14.5	17.1	5.4	34.2	9	8.6	10.8	1.2	6.0	100
GPT 04M5	4	M5	9	4	16.6	14.5	17.1	4.4	34.2	9	8.6	10.8	2	6.2	100
GPT 04M6	4	M6	9	5	17.6	14.5	17.1	4.4	34.2	9	8.6	10.8	3	6.7	100
GPT 0401	4	R1/8	9	8	19.8	14.5	17.1	5	34.2	10	8.6	10.8	3.2	9.5	100</