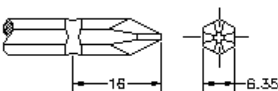
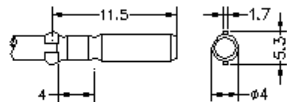


Specifications

MODEL		SKD-2000L	SKD-2200L	SKD-2300L	SKD-2000LS	
Input voltage(DC)		DC 24V OR 32V				
Rated input		25W				
Bit torque	(kgf.cm)	0.2~3.5	0.5~7	1~10	0.2~3.5	
	(Lbf.in)	0.18~3.01	0.44~6.10	0.89~8.67	0.18~3.01	
	(N.m)	0.02~0.34	0.05~0.69	0.1~0.98	0.02~0.34	
Torque Accuracy (%)		±3%				
Torque Adjustment		Step less				
Rev speed at no load (R.p.m)	HI	900	1000	700	670	
	LO	700	700	490	470	
Metal assembly screw	Machine screw(mm)	1.0~2.3	1.4~2.6	1.6~3.0	1.0~2.3	
	Tapping screw(mm)	1.0~2.0	1.4~2.3	1.6~2.6	1.0~2.0	
Weight (g)		270				
Length (mm)		LC / 213 ; LB / 222				
Model of Torque Fixing Ring		KC-4				
Power controller		SKP-32HL-60W ; SKP-32VR-60W				
Model of Suspension Rack		KH-4 、(KC & KH-4)				
Bit Type		 HEX 6.35mm		 Ø4mm		

* 1N.m=10.2Kgf.cm 1N.m=8.85Lbf.in

Accessories

1. BIT Type :
- No. 00 Bit use in dia 1.3~1.8mm screw
 - No. 0 Bit use in dia 1.8~2.0mm screw
 - No. 1 Bit use in dia 2.0~2.6mm screw
 - No. 2 Bit use in dia 3.0~4.0mm screw

SKD-2000L	with BIT	M3	Ø4x40	00# & 0#	& 1#	1 Pce. Each
SKD-2200L	with BIT	M3	Ø4x40	00# & 0#	& 1#	1 Pce. Each
SKD-2300L	with BIT	M3	Ø4x40	1# & 2#		1 Pce. Each
SKD-2000LS	with BIT	M3	Ø4x40	00# & 0#	& 1#	1 Pce. Each

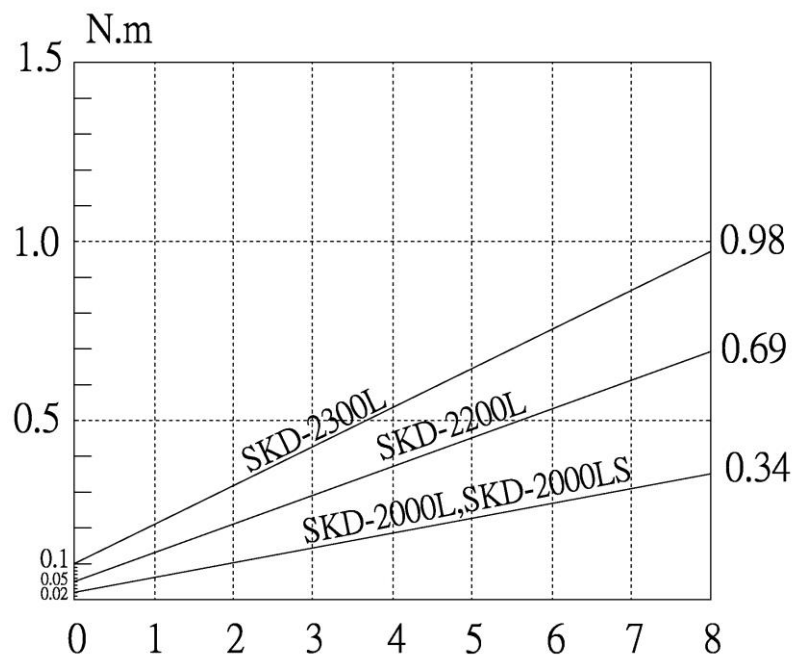
2. Suspension rack and Torque fixing ring acceptable for use with the tool are available from KILEWS catalogue.



Torque Adjustment Operation

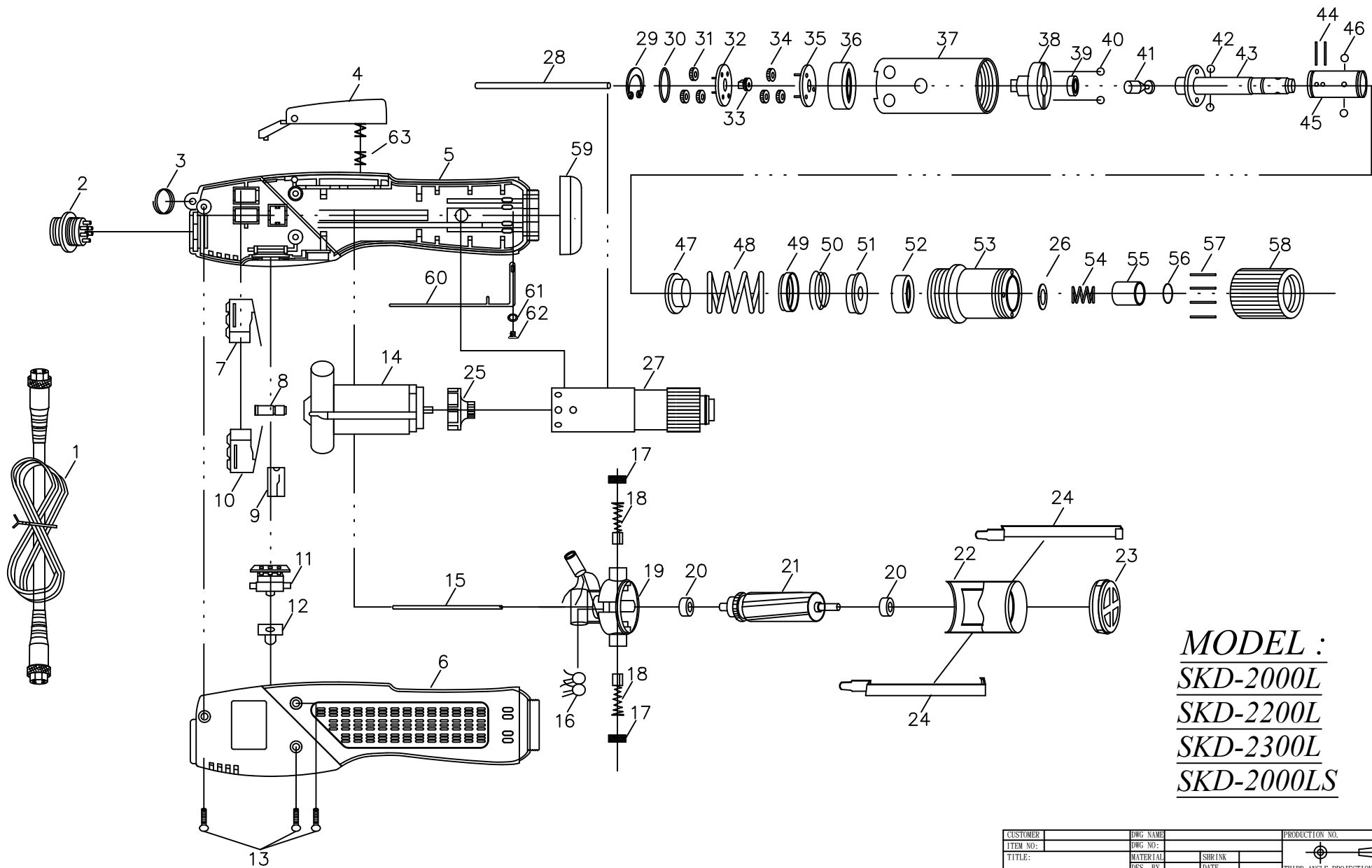
To adjust the torque on these screwdrivers. Proceed as follows :

1. Determine the torque output of the tool by checking a tightened Fastener with a torque wrench.
2. Increase or decrease the torque by rotating the Spring Adjusting Ring. Rotating the Ring clockwise to a higher number on the torque Scale increase torque output while rotating the Ring counterclockwise to a lower number decreases the torque output.
3. Check the adjustment with a torque wrench. A number of factors will affect torque output from one job to another. Final torque adjustment should be made at the job through a of series of gradual increase. Always start below the desired torque and work upward.
4. Adjust the bit torque by changing the driving in length of the adjust ring at the end.
5. The relationship between torque scale and bit torque is as shown Ring, in the torque diagram. The figures of torque scale do not indicate bit torque values. However, the clamping torque of screw itself is different form type, size, material of the screw and the material of its mating part. Use it as standard to obtain an appropriate clamping torque.
6. The (Return torque method) in which once-clamped screw is returned with torque wrench or the like is available as one of torque control methods however, note that the measured values by the return torque method generally appear in 10%~30% lower than the actually clamping torque.
7. The torque checker measures the torque of screwdriver. The clamping torque of screw itself is different from the clamped conditions. Understand the correlation between clamping torque values and the torque checker values perform the torque control properly.

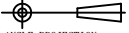


CAUTION

1. Also in reverse rotation, the clutch is turned off in such manner as in normal rotation, stopping the motor running. Accordingly, when the screw tightened at a large torque, set it to a higher torque scale.
2. The number from zero to eight on the Torque Scale are reference number only and not an indication of actual torque output.
3. The power supplier will generate low power when the button of the power controller is switched to "LO." Also, the electric screwdriver's torque output setting value should be adjusted to middle torsion value accordingly.



MODEL :
SKD-2000L
SKD-2200L
SKD-2300L
SKD-2000LS

CUSTOMER	DWG NAME	PRODUCTION NO.				
ITEM NO:	DWG NO:	 THIRD ANGLE PROJECTION				
TITLE:	MATERIAL				SHRINK	
	DES. BY				DATE	
	CHKD. BY				DATE	
	APPD. BY				DATE	
		UNIT	SCALE	SHT NO. OF SHTS.		

NO	PARTS NO	PARTS NAME-E	PARTS NAME-C	Q'ty	NO	PARTS NO	PARTS NAME-E	PARTS NAME-C	Q'ty
1	AA50001	CORD ASSEMBLY 2M	電源線 2M	1		GH28191-6	IDLE GEAR FOR "2300L&2000LS"	游星齒輪(2300L&2000LS)	3
2	PZ50160	CONNECTOR ASS'Y	6芯插座	1	32	GG28211	GEAR SEAT"2000L&2200L"	上齒盤(2000L&2200L)	1
3	CJ20011	SUSPENSION RING	起子吊環	1		G21507	GEAR SEAT FOR "2300L&2000LS"	上齒盤(2300L&2000LS)	1
4	CC28022	TRIGGER ASSEMBLY	手按開關半成品	1	33	M11308	CENTRAL GEAR FOR "2000L&2200L"	中心齒(2000L&2200L)	1
	CC28023	TRIGGER ASSEMBLY (ESD)	手按開關半成品 (ESD)	1		G20103	CENTRAL GEAR FOR "2300L&2000LS"	中心齒(2300L&2000LS)	1
5	CB28003	HOUSING-UNDERSIDE	下蓋	1	34	GH28191	IDLE GEAR FOR "2000L&2200L"	游星齒輪(2000L&2200L)	3
	CB28005	HOUSING-UNDERSIDE (ESD)	下蓋 (ESD)	1		GH28191-1	IDLE GEAR FOR "2300L&2000LS"	游星齒輪(2300L&2000LS)	3
6	CA28153	HOUSING-UPSIDE	上蓋	1	35	GG28211	GEAR SEAT FOR "2000L&2200L"	上齒盤(2000L&2200L)	1
	CA28155	HOUSING-UPSIDE (ESD)	上蓋 (ESD)	1		GG28211-1	GEAR SEAT FOR "2300L&2000LS"	下齒盤(2300L&2000LS)	1
7	HB50061	START SWITCH	啟動開關	1	36	GN28221	MAIN BEARING	離合器主軸承	1
8	CE28051-1	PUSH ROD	推桿半成品	1	37	GA28231-3	GEAR CASE	上離合器筒	1
9	CE28061	FIXTURE	三合一固定片	1	38	GC28241-2	CAM FOR"2000L&2000LS"	上離合器頭(2000L&2000LS)	1
10	H10201	SHUT OFF SWITCH	剎車開關	1		GC28241-1	CAM FOR "2200L"	上離合器頭(2200L)	1
11	HA28071F	CHANGEOVER SWITCH	正反開關	1		GC28241	CAM FOR "2300L"	上離合器頭(2300L)	1
12	CI60216	CHANGEOVER SWITCH CAP FOR "2000L&2000LS"	正反開關帽蓋(2000L&2000LS)	1	39	GN28251	BALL BEARING	軸承	1
	CI60211	CHANGEOVER SWITCH CAP FOR "2200L"	正反開關帽蓋(2200L)	1	40	GP30371	STEEL BALLS "3.15mm"	跳脫鋼珠 (3.15mm)	2
	CI60212	CHANGEOVER SWITCH CAP FOR "2300L"	正反開關帽蓋(2300L)	1	41	GU28261-1	STOP PILOT	停止用酒杯	1
13	CH20102	SCREW	螺絲	3	42	GP21291A	STELL BALLS for 3mm	酒杯鋼珠(3mm)	2
14	MO28081-0	MOTOR ASSEMBLY FOR "2000L"	馬達整組(2000L)	1	43	GD28281C-1	SHAFT FOR "2000LC/2200LC/2300LC" TYPE	傳動軸(2000LC/2200LC/2300LC)	1
	MO28081-2	MOTOR ASSEMBLY FOR "2200L"	馬達整組(2200L)	1		GD28281B	SHAFT FOR "B" TYPE	傳動軸(B頭)	1
	MO28081-1	MOTOR ASSEMBLY FOR "2300L&2000LS"	馬達整組(2300L&2000LS)	1	44	G21203	PINS FOR GT28282B	插梢(LB)	2
15	MI30511-2	PILOT ROD	開關引導棒	1	45	GT28282B	BIT HOLDER(B:6.35)	起子頭(LB)	2
16	EB33610-2	CERAMICS CAPACITOR	陶瓷電容	2	46	GP20331	BIT PILOT FOR "C"TYPE 2mm	起子頭帽鋼珠(C)(2mm)	1
17	MD20151	BRUSH CAP	碳刷蓋	2		GP21291B	BIT PILOT FOR "B"TYPE 2.5mm	起子頭帽鋼珠(B)(2.5mm)	2
18	MC50161-1	CARBON	碳刷	2	47	GF28291	WARING PLATE TYPE	扭力推盤	2
19	ML28131F	MOTOR TOP COVER	碳刷座半成品	1	48	GE28321	WARING SPRING FOR "2000L&2000LS"	扭力彈簧(2000L&2000LS)	1
20	ME28121	BALL BEARING	軸承	2		GE28321-3	WARING SPRING FOR 2200L	扭力彈簧(2200L)	1
21	MH28161-1	ARMATURE FOR "2000L"	電樞(2000L)	1		GE28321-8	WARING SPRING FOR 2300L	扭力彈簧(2300L)	1
	MH28161-2	ARMATURE FOR "2200L"	電樞(2200L)	1	49	GO28241	SPRING CUP FOR	彈簧杯	1
	MH28161-7	ARMATURE FOR "2300L&2000LS"	電樞(2300L&2000LS)	1	50	GO28251	TRIANGLE SPRING "2000L&2200L&2000LS"	三角彈簧(2000L&2200L&2000LS)	1
22	MI28171-1	MOTOR YOKE ASSEMBLY FOR "2000L"	鐵圈連磁鐵(2000L)	1		GO30545-1	TRIANGLE SPRING "2300L"	三角彈簧(2300L)	1
	MI28171-2	MOTOR YOKE ASSEMBLY "2200L&2300L&2000LS"	鐵圈連磁鐵(2200L&2300L&2000LS)	1	51	GY28331	WARING SPRING SEAT	止推盤	1
23	MB28141	MOTOR END COVER	馬達前蓋	1	52	GN28341-1	BALL BEARING	軸承	1
24	MA33621B	ASSEMBLING SPRING	馬達固定片	2	53	GB21332-1	CLUTCH CASE	下離合器筒	2
25	MK28091	FAN FOR 2000L& 2200L	風扇(2000L&2200L)	1	54	GO28361	BIT SPRING FOR "C"TYPE	起子頭帽彈簧(C)	1
	MK28091-1	FAN FOR 2300L&2000LS	風扇(2300L&2000LS)	1		GO28361-1	BIT SPRING FOR "B"TYPE	起子頭帽彈簧(B)	1
26	G21436-1	WASHER FOR "C"TYPE	起子頭帽彈簧墊片(C)	1	55	GJ28371	BIT SLEEVE FOR "C"TYPE	起子頭帽(C)	1
27	GZ28111-1C	CLUTCH ASSEMBLY FOR "2000LC"	離合器整組 (2000LC)	1		GJ3046B	BIT SLEEVE FOR "B"TYPE	起子頭帽(B)	1
	GZ28111-1B	CLUTCH ASSEMBLY FOR "2000LB"	離合器整組 (2000LB)	1	56	GO28411	C-RING FOR "C"TYPE	起子頭帽 C環(C)	1
	GZ28111-2C	CLUTCH ASSEMBLY FOR "2200LC"	離合器整組 (2200LC)	1		GQ21361	C-RING FOR "B"TYPE	起子頭帽 C環(B)	1
	GZ28111-2B	CLUTCH ASSEMBLY FOR "2200LB"	離合器整組 (2200LB)	1	57	GL28381	TORQUE ADJUSTING PINS	扭力調整棒	4
	GZ28111-3C	CLUTCH ASSEMBLY FOR "2300LC"	離合器整組 (2300LC)	1	58	GM28391	TORQUE ADJUSTING RING	扭力調整環	1
	GZ28111-3B	CLUTCH ASSEMBLY FOR "2300LB"	離合器整組 (2300LB)	1	59	CD28043	COUPLER	前鎖環	1
	GZ28111-1CS	CLUTCH ASSEMBLY FOR "2000LSC"	離合器整組 (2000LSC)	1		CD28043-1	COUPLER (ESD)	前鎖環 (ESD)	1
	GZ28111-1BS	CLUTCH ASSEMBLY FOR "2000LSB"	離合器整組 (2000LSB)	1	60	CH50671-3	GROUNDING MEANS	接地線	1
28	MI28101-2	PILOT ROD	開關引導棒	1	61	CH20102-18	WASHER	華司	1
29	GK28181-1	"C" RING	齒輪固定C環	1	62	CH30192	SCREW	地線螺絲	1
30	GI28441	IRON WASHER	齒輪固定片	1	63	CK28031	TRIGGER SPRING	壓板彈簧	1
31	GH28191-2	IDLE GEAR FOR "2000L&2200L"	游星齒輪(2000L&2200L)	3					

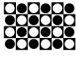
【 KILEWS INDUSTRIAL CO., LTD. 】

Description of Verification



1. A feel of rough and relief by touching.



2. The image “” can be visualized at the right viewing angle.



3. The hidden image of “**KILEWS**” can be observed from an oblique angle of 15 degree.

The Way to Verify

