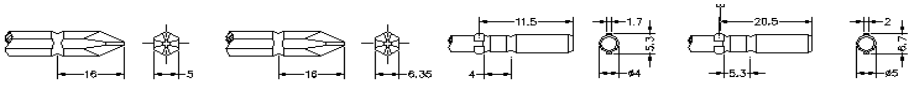


# Specifications

MODEL		SKD-5200P	SKD-5300P	SKD-5300PF
Input voltage(DC)		DC 24V OR 32V		
Rated input		48W		
Bit torque	(kgf.cm)	2~12	3~16	2~8
	(Lbf.in)	1.77~10.44	2.57~13.89	1.77~6.9
	(N.m)	0.2~1.18	0.29~1.57	0.2~0.78
Torque Accuracy (%)		±3%		
Torque Adjustment		Step less		
Rev speed at no load ( R.p.m)	HI	1000	1000	2000
	LO	700	700	-
Metal assembly screw(mm)	Machine screw	1.6~3.0	2.3~3.5	1.6~3.0
	Tapping screw	1.6~2.6	2.3~3.0	1.6~2.6
Weight (g)		480		
Length (mm)		234		
Model of Torque Fixing Ring		KC-6		
Power controller		SKP-32HL-60W ; SKP-32VR-60W		
Model of Suspension Rack		KH-4 、(KC & KH-2)		
Bit Type				

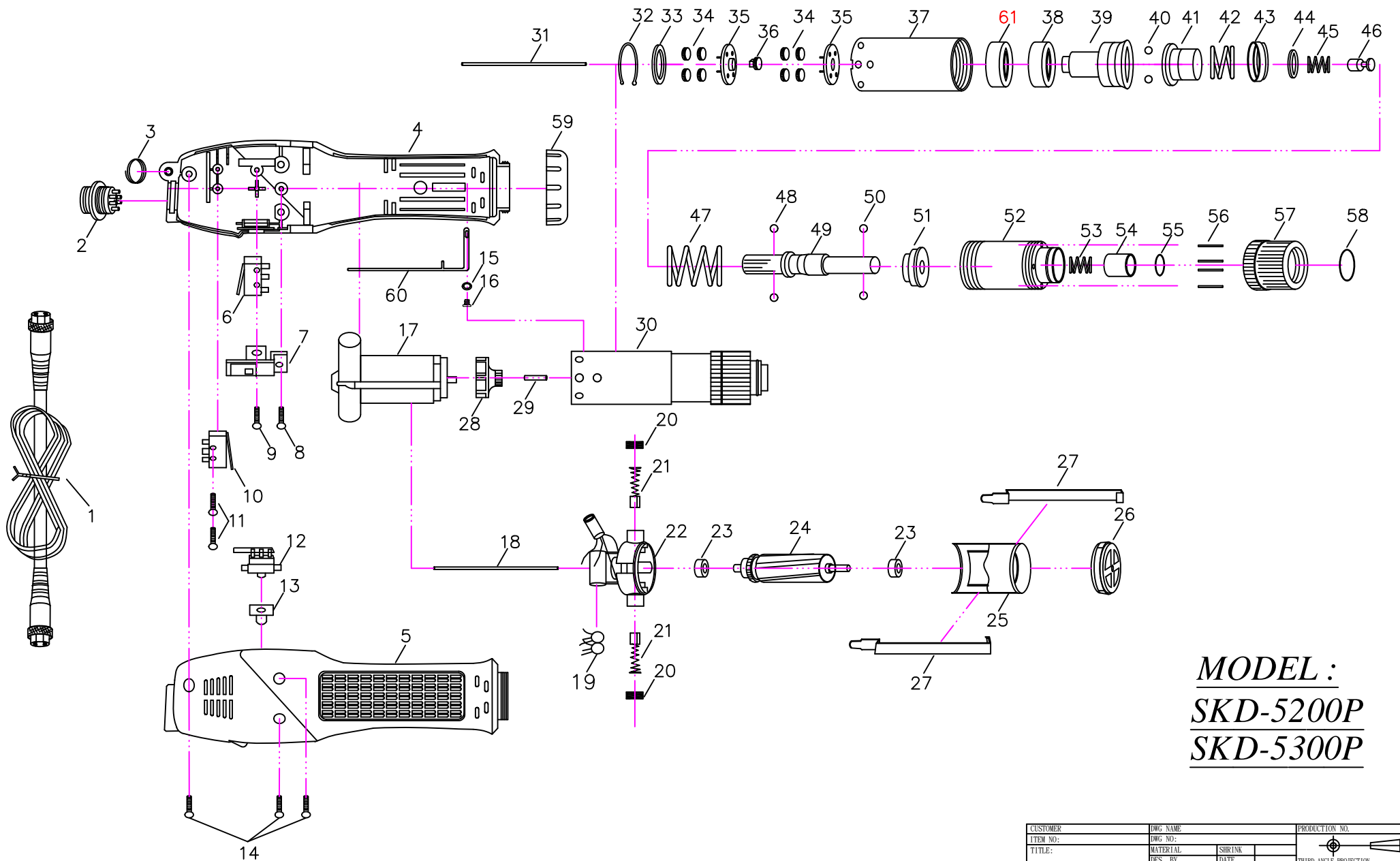
\* 1N.m=10.2Kgf.cm    1N.m=8.85Lbf.in

# Accessories

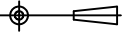
1. BIT Type :
- No. 00 . . . . Bit use in dia 1.3~1.8mm screw
  - No. 0 . . . . . Bit use in dia 1.8~2.0mm screw
  - No. 1 . . . . . Bit use in dia 2.0~2.6mm screw
  - No. 2 . . . . . Bit use in dia 3.0~4.0mm screw

SKD-5200P	with BIT	1# & 2#	1 Pce. Each
SKD-5300P	with BIT	1# & 2#	1 Pce. Each
SKD-5300PF	with BIT	1# & 2#	1 Pce. Each

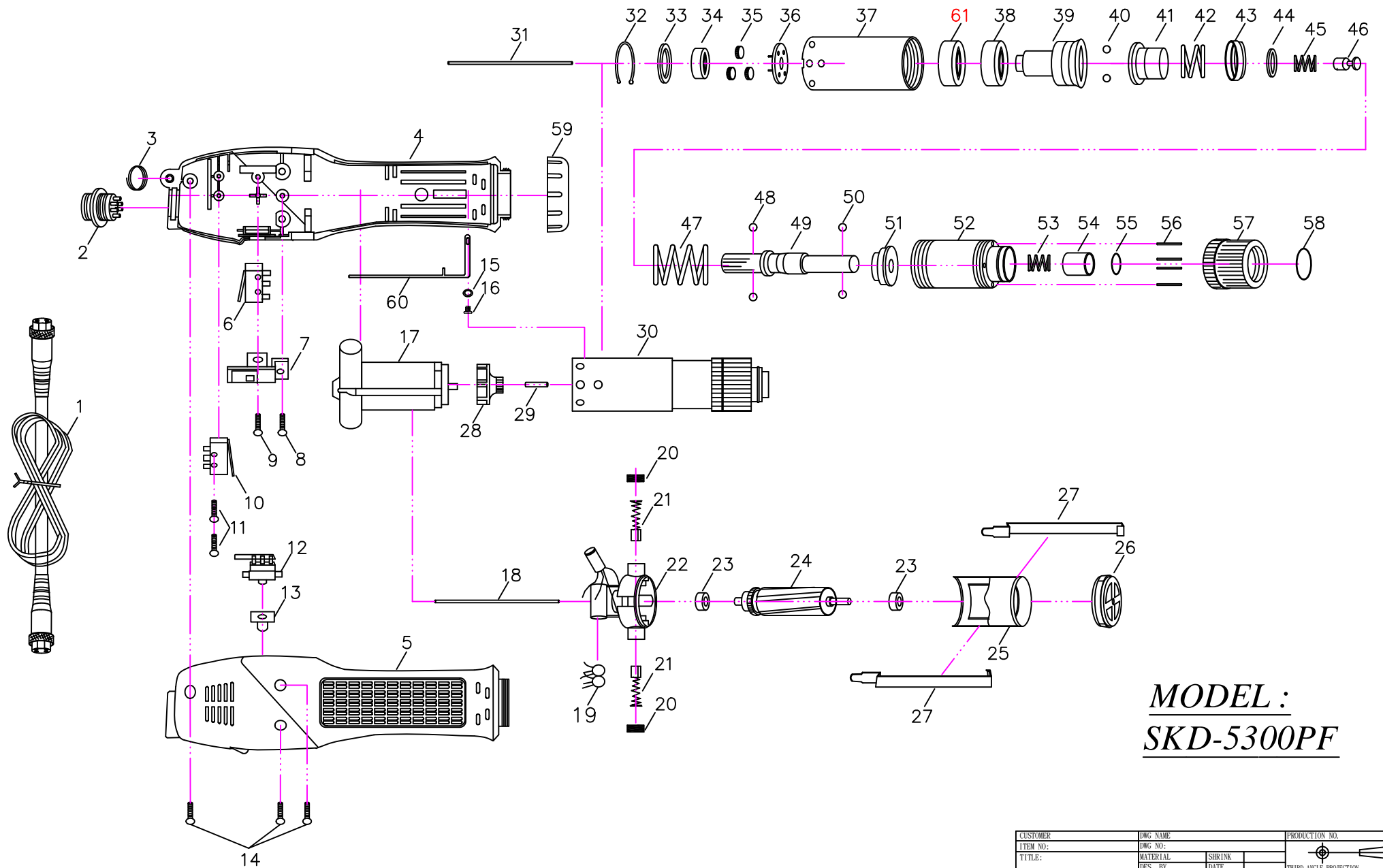
2.Suspension rack and Torque fixing ring acceptable for use with the tool are available from KILEWS catalogue.



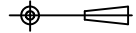
***MODEL :***  
***SKD-5200P***  
***SKD-5300P***

CUSTOMER	DWG NAME		PRODUCTION NO.		
ITEM NO.	DWG NO.				
TITLE:	MATERIAL	SHRINK		THIRD ANGLE PROJECTION.	
	DES. BY	DATE		UNIT	SCALE
	CHKD. BY	DATE			SHT NO.
	APPD. BY	DATE			

NO	PARTS NO	PARTS NAME-E	PARTS NAME-C	Q'ty	NO	PARTS NO	PARTS NAME-E	PARTS NAME-E	Q'ty
1	AA50001	CORD ASSEMBLY	電源線	1	32	GK20231	"C" RING FOR CH20241	齒輪固定C環	1
2	PZ50160	CONNECTOR	六芯插座	1	33	GI20251-1	IRON WASHER	齒輪固定片	1
3	CJ20011	SUSPENSION RING	起子吊環	1	34	GH20241	IDLE GEAR	游星齒輪	8
4	CB33405	HOUSING-UNDERSIDE	外殼下蓋	1	35	GG20271	GEAR SEAT	齒盤	2
	CB33407	HOUSING-UNDERSIDE (ESD)	外殼下蓋(ESD)	1	36	G20101	CENTRAL GEAR	中心齒	1
5	CA33405	HOUSING-UPSIDE	外殼上蓋	1	37	GA30311-7	GEAR CASE	上離合器筒	1
	CA33407	HOUSING-UPSIDE (ESD)	外殼上蓋(ESD)	1	38	GN30321	MAIN BEARING	離合器主軸承	1
6	H10201	START SWITCH	啟動開關	1	39	GX33319-4	SHAFT GUIDE FOR "5200P"	上離合器頭(5200P)	1
7	CE90101-1	SWITCH BASE	三合一開關	1		GX33318	SHAFT GUIDE FOR "5300P"	上離合器頭(5300P)	1
8	CH90121	SCREW	螺絲	1	40	GP30351	STEEL BALLS	跳脫鋼珠	2
9	CH90131	SCREW	螺絲	1	41	GF33317	WARING PLATE	扭力推盤	1
10	H10201	SHUT OFF SWITCH	剎車開關	1	42	GO30541	PRING FOR 5200P	兩段式小彈簧(5200P)	1
11	CH90151-1	SCREW	螺絲	2		GO30541-2	PRING FOR 5300P	兩段式小彈簧(5300P)	1
12	HA28071F	CHANGEOVER SWITCH	正反開關	1	43	GO30531	SPRING CAP	彈簧蓋	1
13	CI60214	CHANGEOVER SWITCH CAP FOR "5200P"	正反開關帽蓋(5200P)	1	44	GV33316	INNER SPRING CAP	下壓式彈簧蓋	1
	CI60212	CHANGEOVER SWITCH CAP FOR "5300P"	正反開關帽蓋(5300P)	1	45	GO33315-2	INNER SPRING FOR 5200P	下壓式內彈簧 5200P	1
14	CH20102	SCREW	螺絲	3		GO33315	INNER SPRING FOR 5300P	下壓式內彈簧 5300P	1
15	CH20102-18	WASHER	華司	1	46	GU30361	STOP PILOT	停止用酒杯	1
16	CH30192	SCREW	螺絲	1	47	GE30411-18	WRING SPRING FOR 5200P	扭力彈簧(5200P)	1
17	MO50111	MOTOR ASSEMBLY FOR "5200P"	馬達整組(5200P)	1		GE30413-5	WRING SPRING FOR 5300P	扭力彈簧(5300P)	1
	MO50111-1	MOTOR ASSEMBLY FOR "5300P"	馬達整組(5300P)	1	48	GP30371	STELL BALLS	酒杯鋼珠	2
18	MI33511-1	PILOT ROD FOR "SKD-5200P"	開關引導棒	1	49	GD33319D	SHAFT FOR "D" TYPE	傳動軸(D頭)	1
19	EB33610-2	CERAMICS CAPACITOR	陶瓷電容	2		GD33319A	SHAFT FOR "A" TYPE	傳動軸(A頭)	1
20	MD20151	BRUSH CAP	碳刷蓋	2		GD33319B	SHAFT FOR "B" TYPE	傳動軸(B頭)	1
21	MC71411-1	CARBON BRUSH	碳刷	2		GD33319C	SHAFT FOR "C" TYPE	傳動軸(C頭)	1
22	ML50571	MOTOR TOP COVER	碳刷座半成品	1		GD33319AD	SHAFT FOR "AD" TYPE	傳動軸(AD頭)	1
23	ME20181	BALL BEARING	軸承	2	50	GP20331	BIT PILOT FOR "A&D"	起子頭帽鋼珠(A&D用)	2
24	MH50601	ARMATURE FOR "5200P"	電樞(5200P)	1		GP21291B	BIT PILOT FOR "B&C"	起子頭帽鋼珠(B&C用)	2
	MH50601-1	ARMATURE FOR "5300P"	電樞(5300P)	1	51	GY33313	WRING SPRING BASE	止推盤	1
25	MJ50631	MOTOR YOKE ASSEMBLY FOR "5200P"	鐵圈連磁鐵(5200P)	1	52	GB20381-8	CLUTCH CASE FOR "A.C.D"TYPE	下離合器筒(A.C.D用)	1
	MJ30631	MOTOR YOKE ASSEMBLY FOR "5300P"	鐵圈連磁鐵(5300P)	1		GB20381-9	CLUTCH CASE FOR "B"TYPE	下離合器筒(B用)	1
26	MB20221	MOTOR END COVER	馬達前蓋	1	53	GO30452	BIT SPRING FOR 5200P 5300PA,C,D	起子頭帽彈簧 5200P 5300PA,C,D	1
27	MA20211B	ASSEMBLING SPRING	馬達固定片	2		GO20391B-J	BIT SPRING FOR 5200PB	起子頭帽彈簧 5200PB	1
28	MK20131-1	FAN	風扇	1		GO20391B	BIT SPRING FOR 5300PB	起子頭帽彈簧 5300PB	1
29	MG30081	PILOT ROD	陶瓷棒	1	54	GJ30461	BIT SLEEVE FOR "A,C,D"	起子頭帽(A,C,D)	1
30	GZ33371-2A	CLUTCH ASSEMBLY FOR 5200PA	離合器整組 5200PA	1		GJ3046B	BIT SLEEVE FOR "B"	起子頭帽(B)	1
	GZ33371-2B	CLUTCH ASSEMBLY FOR 5200PB	離合器整組 5200PB	1	55	GQ30471	"C" RING FOR "A,C,D"	起子頭帽C環(A,C,D)	1
	GZ33371-2C	CLUTCH ASSEMBLY FOR 5200PC	離合器整組 5200PC	1		GQ21361	"C" RING FOR "B"	起子頭帽C環(B)	1
	GZ33371-2D	CLUTCH ASSEMBLY FOR 5200PD	離合器整組 5200PD	1	56	GL30481-1	TORQUE ADJUST PING	扭力調整棒	4
	GZ33371-2AD	CLUTCH ASSEMBLY FOR 5200PAD	離合器整組 5200PAD	1	57	GM30491	TORQUE ADJUST RING	扭力調整環	1
	GZ33371-3A	CLUTCH ASSEMBLY FOR 5300PA	離合器整組 5300PA	1	58	GS30501	"C"RING	扭力環C環	1
	GZ33371-3B	CLUTCH ASSEMBLY FOR 5300PB	離合器整組 5300PB	1	59	CD20111-1	COUPLER	外殼前鎖環	1
	GZ33371-3C	CLUTCH ASSEMBLY FOR 5300PC	離合器整組 5300PC	1		CD20111-2	COUPLER ESD	外殼前鎖環 ESD	1
	GZ33371-3D	CLUTCH ASSEMBLY FOR 5300PD	離合器整組 5300PD	1	60	CH30673C	GROUNDING MEANS	接地線	1
	GZ33371-3AD	CLUTCH ASSEMBLY FOR 5300PAD	離合器整組 5300PAD	1	61	GN30435	MAIN BEARING	離合器主軸承	1
31	MI33241	PILOT ROD	開關引導棒	1					



**MODEL :**  
**SKD-5300PF**

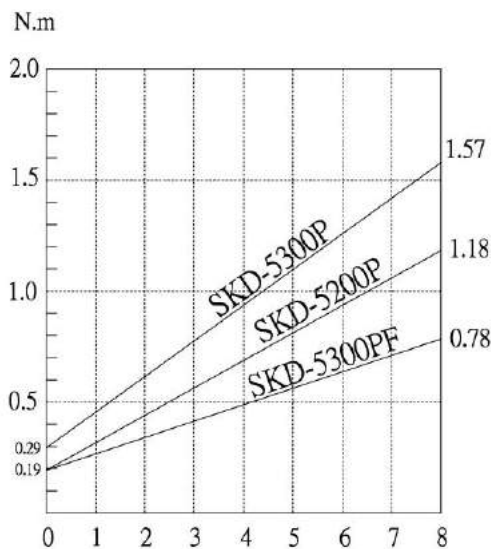
CUSTOMER	DWG NAME		PRODUCTION NO.		
ITEM NO.	DWG NO.				
TITLE:	MATERIAL	SHRINK	THIRD ANGLE PROJECTION.		
	DES. BY	DATE	UNIT	SCALE	SHT NO.
	CHKD. BY	DATE			
	APPD. BY	DATE			

NO	PARTS NO	PARTS NAME-E	PARTS NAME-C	Q'ty	NO	PARTS NO	PARTS NAME-E	PARTS NAME-E	Q'ty
1	AA50001	CORD ASSEMBLY	電源線	1	34	G21302	SPACER	快速墊圈	1
2	PZ50160	CONNECTOR	六芯插座	1	35	GH20241-1	IDLE GEAR	游星齒輪	3
3	CJ20011	SUSPENSION RING	起子吊環	1	36	GG20271-1	GEAR SEAT	快速齒盤	1
4	CB33405	HOUSING-UNDERSIDE	外殼下蓋	1	37	GA30311-8	GEAR CASE	上離合器筒	1
	CB33407	HOUSING-UNDERSIDE (ESD)	外殼下蓋(ESD)	1	38	GN30321	MAIN BEARING	離合器主軸承	1
5	CA33405	HOUSING-UPSIDE	外殼上蓋	1	39	GX33319-4	SHAFT GUIDE	上離合器頭	1
	CA33407	HOUSING-UPSIDE (ESD)	外殼上蓋(ESD)	1	40	GP30351	STEEL BALLS	跳脫鋼珠	2
6	H10201	START SWITCH	啟動開關	1	41	GF33317	WARING PLATE	扭力推盤	1
7	CE90101-1	SWITCH BASE	三合一開關	1	42	GO30541	PRING	兩段式小彈簧	1
8	CH90121	SCREW	螺絲	1	43	GO30531	SPRING CAP	彈簧蓋	1
9	CH90131	SCREW	螺絲	1	44	GV33316	INNER SPRING CAP	下壓式彈簧蓋	1
10	H10201	SHUT OFF SWITCH	剎車開關	1	45	GO33315-2	INNER SPRING	下壓式內彈簧	1
11	CH90151-1	SCREW	螺絲	2	46	GU30361	STOP PILOT	停止用酒杯	1
12	HA28071F	CHANGEOVER SWITCH	正反開關	1	47	GE30411-20	WRING SPRING	扭力彈簧	1
13	CI60212	CHANGEOVER SWITCH CAP	正反開關帽蓋	1	48	GP30371	STELL BALLS	酒杯鋼珠	2
14	CH20102	SCREW	螺絲	3	49	GD33319A	SHAFT FOR "A" TYPE	傳動軸(A頭)	1
15	CH20102-18	WASHER	華司	1		GD33319B	SHAFT FOR "B" TYPE	傳動軸(B頭)	1
16	CH30192	SCREW	螺絲	1		GD33319C	SHAFT FOR "C" TYPE	傳動軸(C頭)	1
17	MO50111-2	MOTOR ASSEMBLY	馬達整組	1		GD33319D	SHAFT FOR "D" TYPE	傳動軸(D頭)	1
18	MI33511	PILOT ROD	開關引導棒	1		GD33319AD	SHAFT FOR "AD" TYPE	傳動軸(AD頭)	1
19	EB33610-2	CERAMICS CAPACITOR	陶瓷電容	2	50	GP20331	BIT PILOT FOR "A&D"	起子頭帽鋼珠(A&D用)	2
20	MD20151	BRUSH CAP	碳刷蓋	2		GP21291B	BIT PILOT FOR "B&C"	起子頭帽鋼珠(B&C用)	2
21	MC50161-1	CARBON BRUSH	碳刷	2	51	GY33313	WRING SPRING BASE	止推盤	1
22	ML50571-3	MOTOR TOP COVER	碳刷座半成品	1	52	GB20381-8	CLUTCH CASE FOR "A.C.D"TYPE	下離合器筒(A.C.D用)	1
23	ME21481	BALL BEARING	軸承	2		GB20381-9	CLUTCH CASE FOR "B"TYPE	下離合器筒(B用)	1
24	MH50601-5	ARMATURE	電樞	1	53	GO30452	BIT SPRING FOR A,C,D	起子頭帽彈簧 A,C,D	1
25	MJ33631	MOTOR YOKE ASSEMBLY	鐵圈連磁鐵	1		GO20391B-J	BIT SPRING FOR "B"	起子頭帽彈簧 B	1
26	MB20221-1	MOTOR END COVER	馬達前蓋	1	54	GJ30461	BIT SLEEVE FOR "A,C,D"	起子頭帽(A,C,D)	1
27	MA33621B	ASSEMBLING SPRING	馬達固定片	2		GJ3046B	BIT SLEEVE FOR "B"	起子頭帽(B)	1
28	MK33091LF	FAN	風扇	1	55	GQ30471	"C" RING FOR "A,C,D"	起子頭帽C環(A,C,D)	1
29	MG30081-1	PILOT ROD	陶瓷棒	1		GQ21361	"C" RING FOR "B"	起子頭帽C環(B)	1
30	GZ33371-4AF	CLUTCH ASSEMBLY-5300PFA	離合器整組-5300PFA	1	56	GL30481-1	TORQUE ADJUST PING	扭力調整棒	4
	GZ33371-4BF	CLUTCH ASSEMBLY-5300PFB	離合器整組-5300PFB	1	57	GM30491	TORQUE ADJUST RING	扭力調整環	1
	GZ33371-4CF	CLUTCH ASSEMBLY-5300PFC	離合器整組-5300PFC	1	58	GS30501	"C"RING	扭力環C環	1
	GZ33371-4DF	CLUTCH ASSEMBLY-5300PFD	離合器整組-5300PFD	1	59	CD20111-1	COUPLER	外殼前鎖環	1
	GZ53373-4ADF	CLUTCH ASSEMBLY-5300PFAD	離合器整組-5300PFAD	1		CD20111-2	COUPLER ESD	外殼前鎖環 ESD	1
31	MI33241	PILOT ROD	開關引導棒	1	60	CH30673C	GROUNDING MEANS	接地線	1
32	GK20231	"C" RING FOR CH20241	齒輪固定C環	1	61	GN30435	MAIN BEARING	離合器主軸承	1
33	GI20251-1	IRON WASHER	齒輪固定片	1					

# Torque Adjustment Operation

To adjust the torque on these screwdrivers. Proceed as follows :

1. Determine the torque output of the tool by checking a tightened Fastener with a torque wrench.
2. Increase or decrease the torque by rotating the Spring Adjusting Ring. Rotating the Ring clockwise to a higher number on the torque Scale increase torque output while rotating the Ring counterclockwise to a lower number decreases the torque output.
3. Check the adjustment with a torque wrench. A number of factors will affect torque output from one job to another. Final torque adjustment should be made at the job through a of series of gradual increase. Always start below the desired torque and work upward.
4. Adjust the bit torque by changing the driving in length of the adjust ring at the end.
5. The relationship between torque scale and bit torque is as shown Ring, in the torque diagram. The figures of torque scale do not indicate bit torque values. However, the clamping torque of screw itself is different form type, size, material of the screw and the material of its mating part. Use it as standard to obtain an appropriate clamping torque.
6. The (Return torque method) in which once-clamped screw is returned with torque wrench or the like is available as one of torque control methods however, note that the measured values by the return torque method generally appear in 10%~30% lower than the actually clamping torque.
7. The torque checker measures the torque of screwdriver. The clamping torque of screw itself is different from the clamped conditions. Understand the correlation between clamping torque values and the torque checker values perform the torque control properly.



CAUTION

1. Also in reverse rotation, the clutch is turned off in such manner as in normal rotation, stopping the motor running. Accordingly, when the screw tightened at a large torque, set it to a higher torque scale.
2. The number from zero to eight on the Torque Scale are reference number only and not an indication of actual torque output.
3. The power supplier will generate low power when the button of the power controller is switched to "LO." Also, the electric screwdriver's torque output setting value should be adjusted to middle torsion value accordingly.

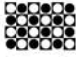
# 【 KILEWS INDUSTRIAL CO., LTD. 】

## Description of Verification



1. A feel of rough and relief by touching.

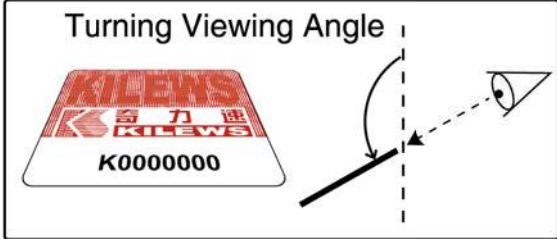
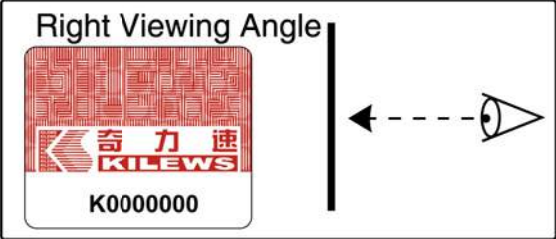


2. The image “” can be visualized at the right viewing angle.

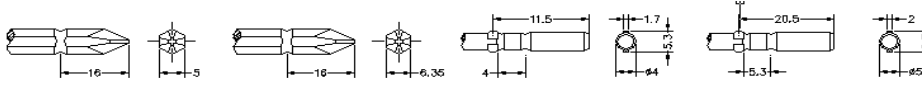


3. The hidden image of “**KILEWS**” can be observed from an oblique angle of 15 degree.

### The Way to Verify



# Specifications

MODEL		SKD-5200L	SKD-5300L	SKD-5300LF
Input voltage(DC)		DC 24V OR 32V		
Rated input		48W		
Bit torque	(kgf.cm)	1~12	3~16	1~8
	(Lbf.in)	0.89~10.44	2.57~13.89	0.89~6.9
	(N.m)	0.1~1.18	0.29~1.57	0.1~0.78
Torque Accuracy (%)		±3%		
Torque Adjustment		Step less		
Rev speed at no load	HI	1000	1000	2000
	LO	700	700	-
Metal assembly screw(mm)	Machine screw	1.6~3.0	2.3~3.5	1.6~3.0
	Tapping screw	1.6~2.6	2.3~3.0	1.6~2.6
Weight (g)		480		
Length (mm)		234		
Model of Torque Fixing Ring		KC-6		
Power controller		SKP-32HL-60W ; SKP-32VR-60W		
Model of Suspension Rack		KH-4 、(&KC KH-2)		
Bit Type				

\* 1N.m=10.2Kgf.cm 1N.m=8.85Lbf.in

# Accessories

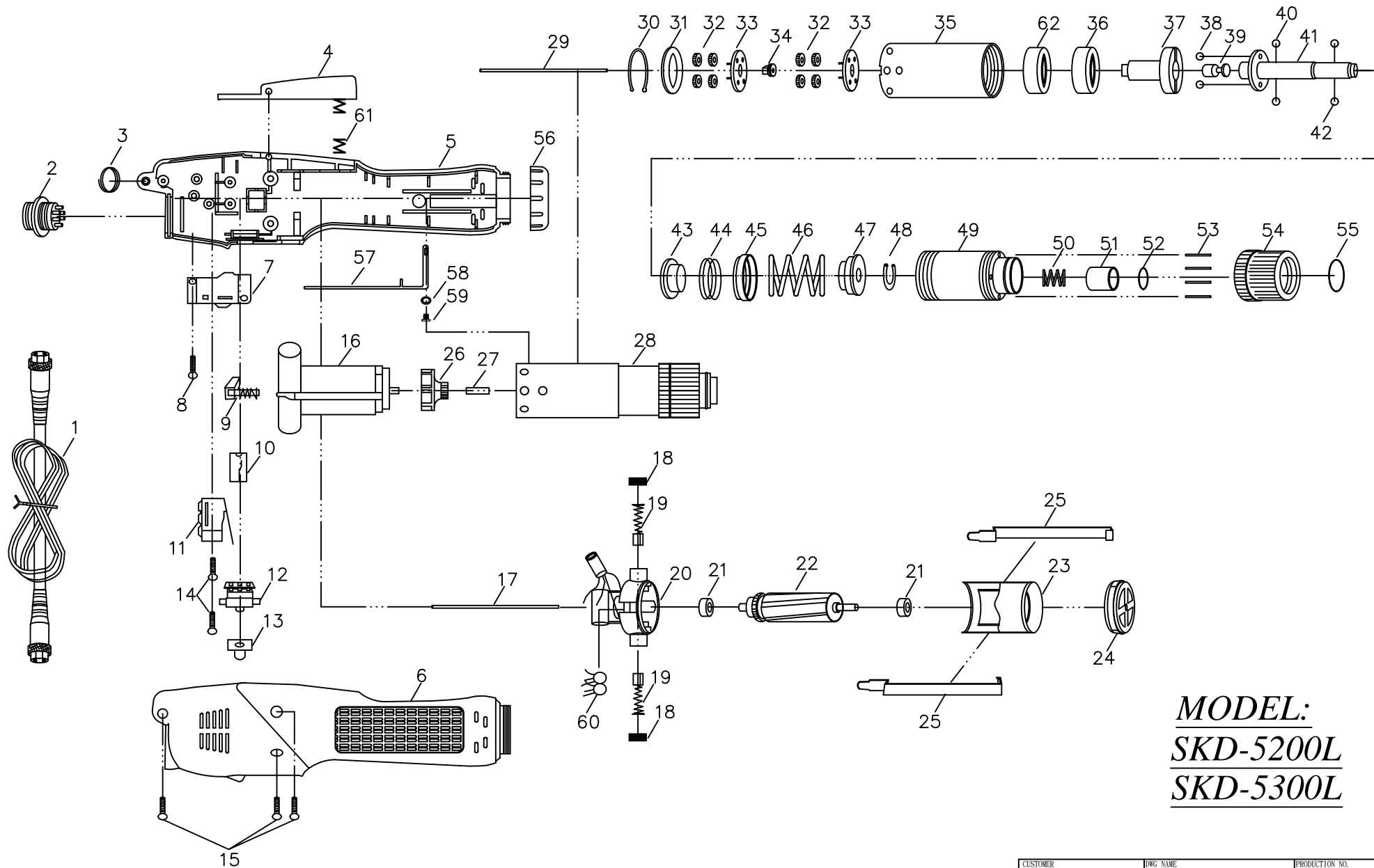
1. BIT Type :
- No. 00 . . . Bit use in dia 1.3~1.8mm screw
  - No. 0 . . . . Bit use in dia 1.8~2.0mm screw
  - No. 1 . . . . Bit use in dia 2.0~2.6mm screw
  - No. 2 . . . . Bit use in dia 3.0~4.0mm screw

SKD-5200L	with BIT	1# & 2#	1 Pce. Each
SKD-5300L	with BIT	1# & 2#	1 Pce. Each
SKD-5300LF	with BIT	1# & 2#	1 Pce. Each

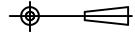
2.Suspension rack and Torque fixing ring acceptable for use with the tool are available from KILEWS catalogue.

# Torque Adjustment Operation

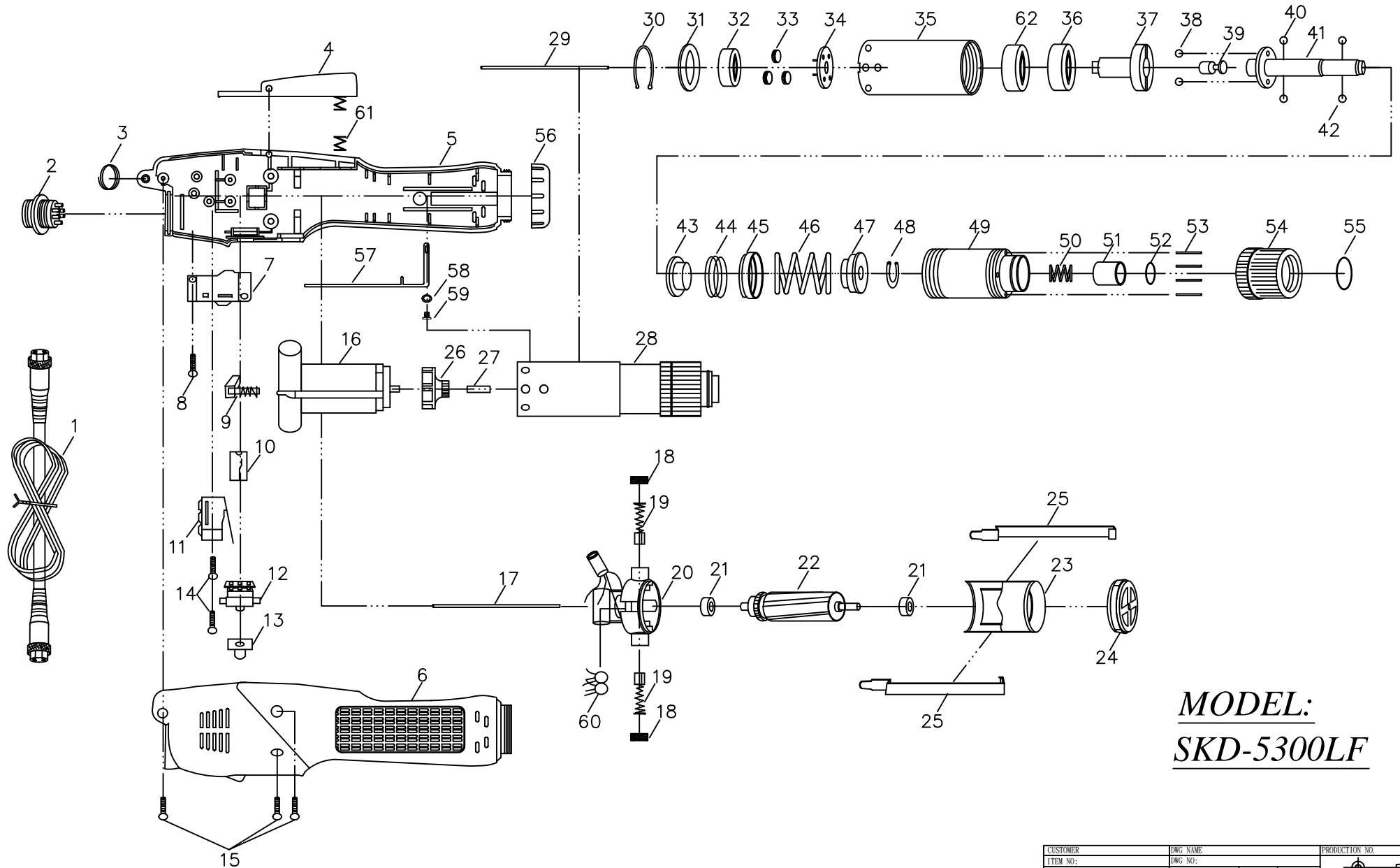




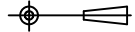
**MODEL:**  
**SKD-5200L**  
**SKD-5300L**

CUSTOMER	DWG NAME		PRODUCTION NO.		
ITEM NO.	DWG NO.		 THIRD ANGLE PROJECTION.		
TITLE:	MATERIAL	SHRINK		UNIT	SCALE
	DES. BY	DATE			SHT NO.
	CHKD. BY	DATE			
	APPD. BY	DATE			

NO	PARTS NO	PARTS NAME-E	PARTS NAME-C	Q'ty	NO	PARTS NO	PARTS NAME-E	PARTS NAME-C	Q'ty
1	AA50001	CORD ASSEMBLY 2M	電源線 2M	1	32	GH20241	IDLE GEAR	游星齒輪	8
	AA50001-1	CORD ASSEMBLY 3M	電源線 3M	1	33	GG20271	GEAR SEAT	齒盤	2
2	PZ50160	CONNECTOR	6芯插座	1	34	G20101	CENTRAL GEAR	中心齒	1
3	CJ20011	SUSPENSION RING	起子吊環	1	35	GA30311-7	GEAR CASE	上離合器筒	1
4	CC50012	TRIGGER ASSEMBLY	手按開關半成品	1	36	GN30321	MAIN BEARING	離合器主軸承	1
	CC50013	TRIGGER ASSEMBLY (ESD)	手按開關半成品 (ESD)	1	37	GC30341	CAM	上離合器頭	1
5	CB50033	HOUSING-UNDERSIDE	外殼下蓋	1	38	GP30351	STEEL BALLS	跳脫鋼珠	2
	CB50035	HOUSING-UNDERSIDE (ESD)	外殼下蓋(ESD)	1	39	GU30361	STOP PILOT	停止用酒杯	1
6	CA50223	HOUSING-UPSIDE	外殼上蓋	1	40	GP30371	STELL BALLS 3.15mm (A,C,D)	酒杯鋼珠3.15mm(A,C,D)	2
	CA50225	HOUSING-UPSIDE (ESD)	外殼上蓋 (ESD)	1		GP30351	STELL BALLS 4mm (B)	酒杯鋼珠4mm(B)	2
7	HB50073	START SWITCH	啟動開關	1	41	GD30381A	SHAFT FOR "A" TYPE	傳動軸(A頭)	1
8	CH30003	SCREW	螺絲	1		GD30381B	SHAFT FOR "B" TYPE	傳動軸(B頭)	1
9	CE50121	PUSH ROD	推桿半成品	1		GD30381C	SHAFT FOR "C" TYPE	傳動軸(C頭)	1
10	CE50151	FIXTURE	三合一固定片	1		GD30381D	SHAFT FOR "D" TYPE	傳動軸(D頭)	1
11	H10201	SHUT OFF SWITCH	剎車開關	1		GD30383AD	SHAFT FOR "AD" TYPE	傳動軸(AD頭)	1
12	HA28071F	CHANGEOVER SWITCH	正反開關	1	42	GP20331	STEEL BALLS FOR "A,D" TYPE(2mm)	起子頭帽鋼珠(A&D用)	2
13	CI60216	CHANGEOVER SWITCH CAP "5200L"	正反開關帽蓋(5200L)	1		GP21291B	STEEL BALLS FOR "B,C" TYPE(2.5mm)	起子頭帽鋼珠(B&C用)	2
	CI60211	CHANGEOVER SWITCH CAP "5300L"	正反開關帽蓋(5300L)	1	43	GF30401	WARING PLATE FOR "A,C,D" TYPE	扭力推盤(A,C,D用)	1
14	CH90151-1	SCREW	螺絲	2		GF30401B	WARING PLATE FOR "B" TYPE	扭力推盤(B用)	1
15	CH20102	SCREW	螺絲	3	44	GO30541-3	SPRING FOR "5200L"	兩段式小彈簧(5200L)	1
16	MO50111	MOTOR ASSEMBLY "5200L"	馬達成品 5200L	1		GO30541-1	SPRING FOR "5300L"	兩段式小彈簧(5300L)	1
	MO50111-1	MOTOR ASSEMBLY "5300L"	馬達成品 5300L	1	45	GO30531	SPRING CAP	彈簧蓋	1
17	MI30511	PILOT ROD	開關引導棒	1	46	GE50411-1	WARING SPRING FOR "5200LA,C,D"	扭力彈簧(5200LA,C,D)	1
18	MD20151	BRUSH CAP	碳刷蓋	2		GE50411-2	WARING SPRING FOR "5200LB"	扭力彈簧(5200LB)	1
19	MC71411-1	CAPBON BRUSH	碳刷	2		GE30413-2	WARING SPRING FOR "5300LA,C,D"	扭力彈簧(5300LA,C,D)	1
20	ML50571	MOTOR TOP COVER	碳刷座半成品	1		GE30411-10	WARING SPRING FOR "5300LB"	扭力彈簧(5300LB)	1
21	ME20181	BALL BEARING	軸承	2	47	GY30421	WARING SPRING BASE FOR "A,C,D" TYPE	止推盤(A,C,D)	1
22	MH50601	ARMATURE FOR "5200L"	電樞(5200L)	1		GY30421B	WARING SPRING BASE FOR "B" TYPE	止推盤(B)	1
	MH50601-1	ARMATURE FOR "5300L"	電樞(5300L)	1	48	GK20231B	"C"-RING FOR GY30421B (LB)	傳動軸固定C環(LB)	1
23	MJ50631	MOTOR YOKE ASSEMBLY "5200L"	鐵圈連磁鐵 (5200L)	1	49	GB30441-12A	CLUTCH CASE (A,C,D)	下離合器筒 (A,C,D)	1
	MJ30631	MOTOR YOKE ASSEMBLY "5300L"	鐵圈連磁鐵 (5300L)	1		GB30441-1A	CLUTCH CASE (B)	下離合器筒(B)	1
24	MB20221	MOTOR END COVER	馬達前蓋	1	50	GO30452	BIT SPRING FOR "A,C,D" TYPE	起子頭帽彈簧(A,C,D)	1
25	MA20211B	ASSEMBLING SPRING	馬達固定片	2		GO20391B	BIT SPRING FOR "B" TYPE	起子頭帽彈簧(B)	1
26	MK20131-1	FAN	風扇	1	51	GJ30461	BIT SLEEVE FOR "A,C,D" TYPE	起子頭帽 (A,C,D)	1
27	MG30081	PILOT ROD	陶瓷棒	1		GJ3046B	BIT SLEEVE FOR "B" TYPE	起子頭帽(B)	1
28	GZ30071-2A	CLUTCH ASSEMBLY FOR "5200LA"	離合器整組 5200LA	1	52	GQ30471	"C" RING (A,C,D)	起子頭帽C環 (A,C,D)	1
	GZ30071-2B	CLUTCH ASSEMBLY FOR "5200LB"	離合器整組 5200LB	1		GQ21361	"C" RING (B)	起子頭帽C環(B)	1
	GZ30071-2C	CLUTCH ASSEMBLY FOR "5200LC"	離合器整組 5200LC	1	53	GL30481-1	TORQUE ADJUST PIN	扭力調整棒	4
	GZ30071-2D	CLUTCH ASSEMBLY FOR "5200LD"	離合器整組 5200LD	1	54	GM30491	TORQUE ADJUST RING	扭力調整環	1
	GZ30071-2AD	CLUTCH ASSEMBLY FOR "5200LAD"	離合器整組 5200LAD	1	55	GS30501	"C" RING FOR GM30491	扭力環C環	1
	GZ30071-3A	CLUTCH ASSEMBLY FOR "5300LA"	離合器整組 5300LA	1	56	CD20111-1	COUPLER	外殼前鎖環	1
	GZ30071-3B	CLUTCH ASSEMBLY FOR "5300LB"	離合器整組 5300LB	1		CD20111-2	COUPLER ESD	外殼前鎖環 ESD	1
	GZ30071-3C	CLUTCH ASSEMBLY FOR "5300LC"	離合器整組 5300LC	1	57	CH30673C	GROUNING MEANS	接地線	1
	GZ30071-3D	CLUTCH ASSEMBLY FOR "5300LD"	離合器整組 5300LD	1	58	CH20102-18	WASHER	華司	1
	GZ30071-3AD	CLUTCH ASSEMBLY FOR "5300LAD"	離合器整組 5300LAD	1	59	CH30192	SCREW	螺絲	1
29	MI30241	PILOT ROD FOR "A,C,D" TYPE	開關引導棒 (A,C,D)	1	60	EB33610-2	CERAMICS CAPACITOR	陶瓷電容	1
	MI30241-1	PILOT ROD FOR "B" TYPE	開關引導棒 (B)	1	61	CK28031-1	TRIGGER SPRING	壓板彈簧	1
30	GK20231	"C" RING	齒輪固定C環	1	62	GN30435	MAIN BEARING	離合器主軸承	1
31	GI20251-1	IRON WASHER	齒輪固定片	1					



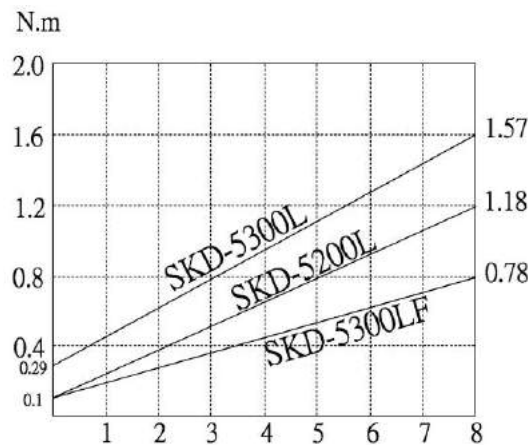
***MODEL:***  
***SKD-5300LF***

CUSTOMER	DWG NAME		PRODUCTION NO.		
ITEM NO.	DWG NO.				
TITLE:	MATERIAL	SHRINK	THIRD ANGLE PROJECTION.		
	DES. BY	DATE	UNIT	SCALE	SHT NO.
	CHKD. BY	DATE			
	APPD. BY	DATE			

NO	PARTS NO	PARTS NAME-E	PARTS NAME-C	Q'ty	NO	PARTS NO	PARTS NAME-E	PARTS NAME-C	Q'ty
1	AA50001	CORD ASSEMBLY 2M	電源線 2M	1	35	GA30311-8	GEAR CASE	上離合器筒	1
	AA50001-1	CORD ASSEMBLY 3M	電源線 3M	1	36	GN30321	MAIN BEARING	離合器主軸承	1
2	PZ50160	CONNECTOR	6芯插座	1	37	GC30341	CAM	上離合器頭	1
3	CJ20011	SUSPENSION RING	起子吊環	1	38	GP30351	STEEL BALLS	跳脫鋼珠	2
4	CC50012	TRIGGER ASSEMBLY	手按開關半成品	1	39	GU30361	STOP PILOT	停止用酒杯	1
	CC50013	TRIGGER ASSEMBLY (ESD)	手按開關半成品 (ESD)	1	40	GP30371	STELL BALLS 3.15mm (A,C,D)	酒杯鋼珠3.15mm(A,C,D)	2
5	CB50033	HOUSING-UNDERSIDE	外殼下蓋	1		GP30351	STELL BALLS 4mm (B)	酒杯鋼珠4mm(B)	2
	CB50035	HOUSING-UNDERSIDE (ESD)	外殼下蓋(ESD)	1	41	GD30381A	SHAFT FOR "A" TYPE	傳動軸(A頭)	1
6	CA50223	HOUSING-UPSIDE	外殼上蓋	1		GD30381B	SHAFT FOR "B" TYPE	傳動軸(B頭)	1
	CA50225	HOUSING-UPSIDE (ESD)	外殼上蓋 (ESD)	1		GD30381C	SHAFT FOR "C" TYPE	傳動軸(C頭)	1
7	HB50073	START SWITCH	啟動開關	1		GD30381D	SHAFT FOR "D" TYPE	傳動軸(D頭)	1
8	CH30003	SCREW	螺絲	1		GD30383AD	SHAFT FOR "AD" TYPE	傳動軸(AD頭)	1
9	CE50121	PUSH ROD	推桿半成品	1	42	GP20331	STEEL BALLS FOR "A,D" TYPE(2mm)	起子頭帽鋼珠(A&D用)	2
10	CE50151	FIXTURE	三合一固定片	1		GP21291B	STEEL BALLS FOR "B,C" TYPE(2.5mm)	起子頭帽鋼珠(B&C用)	2
11	H10201	SHUT OFF SWITCH	剎車開關	1	43	GF30401	WARING PLATE FOR "A,C,D" TYPE	扭力推盤(A,C,D用)	1
12	HA28071F	CHANGEVER SWITCH	正反開關	1		GF30401B	WARING PLATE FOR "B" TYPE	扭力推盤(B用)	1
13	CI60211	CHANGEVER SWITCH CAP	正反開關帽蓋	1	44	GO30541	SPRING	兩段式小彈簧	1
14	CH90151-1	SCREW	螺絲	2	45	GO30531	SPRING CAP	彈簧蓋	1
15	CH20102	SCREW	螺絲	3	46	GE30411-9	WARING SPRING FOR "5300LFA,C,D"	扭力彈簧(5300LFA,C,D)	1
16	MO50111-2	MOTOR ASSEMBLY	馬達成品	1		GE30411-14	WARING SPRING FOR "5300LFB"	扭力彈簧(5300LFB)	1
17	MI30511	PILOT ROD	開關引導棒	1	47	GY30421	WARING SPRING BASE FOR "A,C,D" TYPE	止推盤 (A,C,D)	1
18	MD20151	BRUSH CAP	碳刷蓋	2		GY30421B	WARING SPRING BASE FOR "B" TYPE	止推盤(B)	1
19	MC50161-1	CAPBON BRUSH	碳刷	2	48	GK20231B	"C"-RING FOR GY30421B (LB)	傳動軸固定C環(LB)	1
20	ML50571-3	MOTOR TOP COVER	碳刷座半成品	1	49	GB30441-12A	CLUTCH CASE (A,C,D)	下離合器筒 (A,C,D)	1
21	ME21481	BALL BEARING	軸承	2		GB30441-1A	CLUTCH CASE (B)	下離合器筒(B)	1
22	MH50601-5	ARMATURE	電樞	1	50	GO30452	BIT SPRING FOR "A,C,D" TYPE	起子頭帽彈簧(A,C,D)	1
23	MJ33631	MOTOR YOKE ASSEMBLY	鐵圈連磁鐵	1		GO20391B	BIT SPRING FOR "B" TYPE	起子頭帽彈簧(B)	1
24	MB20221-1	MOTOR END COVER	馬達前蓋	1	51	GJ30461	BIT SLEEVE FOR "A,C,D" TYPE	起子頭帽 (A,C,D)	1
25	MA33621B	ASSEMBLING SPRING	馬達固定片	2		GJ3046B	BIT SLEEVE FOR "B" TYPE	起子頭帽(B)	1
26	MK33091LF	FAN	風扇	1	52	GQ30471	"C" RING (A,C,D)	起子頭帽C環 (A,C,D)	1
27	MG30081-1	PILOT ROD	陶瓷棒	1		GQ21361	"C" RING (B)	起子頭帽C環(B)	1
28	GZ50071-3AF	CLUTCH ASSEMBLY FOR 5300LFA	離合器整組 5300LFA	1	53	GL30481-1	TORQUE ADJUST PIN	扭力調整棒	4
	GZ50071-3BF	CLUTCH ASSEMBLY FOR 5300LFB	離合器整組 5300LFB	1	54	GM30491	TORQUE ADJUST RING	扭力調整環	1
	GZ50071-3CF	CLUTCH ASSEMBLY FOR 5300LFC	離合器整組 5300LFC	1	55	GS30501	"C" RING FOR GM30491	扭力環C環	1
	GZ50071-3DF	CLUTCH ASSEMBLY FOR 5300LFD	離合器整組 5300LFD	1	56	CD20111-1	COUPLER	外殼前鎖環	1
	GZ50073-4ADF	CLUTCH ASSEMBLY FOR 5300LFAD	離合器整組 5300LFAD	1		CD20111-2	COUPLER ESD	外殼前鎖環 ESD	1
29	MI30241	PILOT ROD FOR "A,C,D" TYPE	開關引導棒 (A,C,D)	1	57	CH30673C	GROUNDING MEANS	接地線	1
	MI30241-1	PILOT ROD FOR "B" TYPE	開關引導棒 (B)	1	58	CH20102-18	WASHER	華司	1
30	GK20231	"C" RING	齒輪固定C環	1	59	CH30192	SCREW	螺絲	1
31	GI20251-1	IRON WASHER	齒輪固定片	1	60	EB33610-2	CERAMICS CAPACITOR	陶瓷電容	1
32	G21302	SPACER	快速墊圈	1	61	CK28031-1	TRIGGER SPRING	壓板彈簧	1
33	GH20241-1	IDLE GEAR	游星齒輪	3	62	GN30435	MAIN BEARING	離合器主軸承	1
34	GG20271-1	GEAR SEAT	快速齒盤	1					

To adjust the torque on these screwdrivers. Proceed as follows :

1. Determine the torque output of the tool by checking a tightened Fastener with a torque wrench.
2. Increase or decrease the torque by rotating the Spring Adjusting Ring. Rotating the Ring clockwise to a higher number on the torque Scale increase torque output while rotating the Ring counterclockwise to a lower number decreases the torque output.
3. Check the adjustment with a torque wrench. A number of factors will affect torque output from one job to another. Final torque adjustment should be made at the job through a of series of gradual increase. Always start below the desired torque and work upward.
4. Adjust the bit torque by changing the driving in length of the adjust ring at the end.
5. The relationship between torque scale and bit torque is as shown Ring, in the torque diagram. The figures of torque scale do not indicate bit torque values. However, the clamping torque of screw itself is different form type, size, material of the screw and the material of its mating part. Use it as standard to obtain an appropriate clamping torque.
6. The (Return torque method) in which once-clamped screw is returned with torque wrench or the like is available as one of torque control methods however, note that the measured values by the return torque method generally appear in 10%~30% lower than the actually clamping torque.
7. The torque checker measures the torque of screwdriver. The clamping torque of screw itself is different from the clamped conditions. Understand the correlation between clamping torque values and the torque checker values perform the torque control properly.



**CAUTION**

1. Also in reverse rotation, the clutch is turned off in such manner as in normal rotation, stopping the motor running. Accordingly, when the screw tightened at a large torque, set it to a higher torque scale.
2. The number from zero to eight on the Torque Scale are reference number only and not an indication of actual torque output.
3. The power supplier will generate low power when the button of the power controller is switched to "LO." Also, the electric screwdriver's torque output setting value should be adjusted to middle torsion value accordingly.

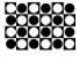
# 【 KILEWS INDUSTRIAL CO., LTD. 】

## Description of Verification



1. A feel of rough and relief by touching.



2. The image “” can be visualized at the right viewing angle.



3. The hidden image of “**KILEWS**” can be observed from an oblique angle of 15 degree.

### The Way to Verify

