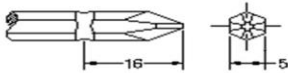
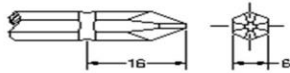


Specifications

MODEL		SKD-7000L	SKD-7200L	SKD-7800L	SKD-7800LF
Input voltage (DC)		DC 24V / 32V			
Rated input		50W			
Bit torque	(kgf.cm)	5~18	7~24	8~30	2~10
	(Lbf.in)	4.34~15.58	6.11~20.8	6.9~26.02	1.77~8.67
	(N.m)	0.49~1.76	0.69~2.35	0.78~2.94	0.2~0.98
Torque Accuracy (%)		±3%			
Torque Adjustment		Stepless			
Rev speed at no load (R.p.m)	HI	1000	750	530	2000
	LO	700	520	350	-
Metal assembly screw (mm)	Machine screw	2.0~3.5	2.6~4.0	3.0~5.0	2.0~3.0
	Tapping screw	2.0~3.0	2.6~3.5	3.0~4.0	2.0~2.6
Weight (g)		600			
Length (mm)		260			
Model of Torque Fixing Ring		KC-2 · KC-2S			
Power controller		SKP-32HL			
Model of Suspension Rack		KH-2 · (KC & KH-1)			
Bit Type		 HEX 5mm,		 HEX 6.35mm	

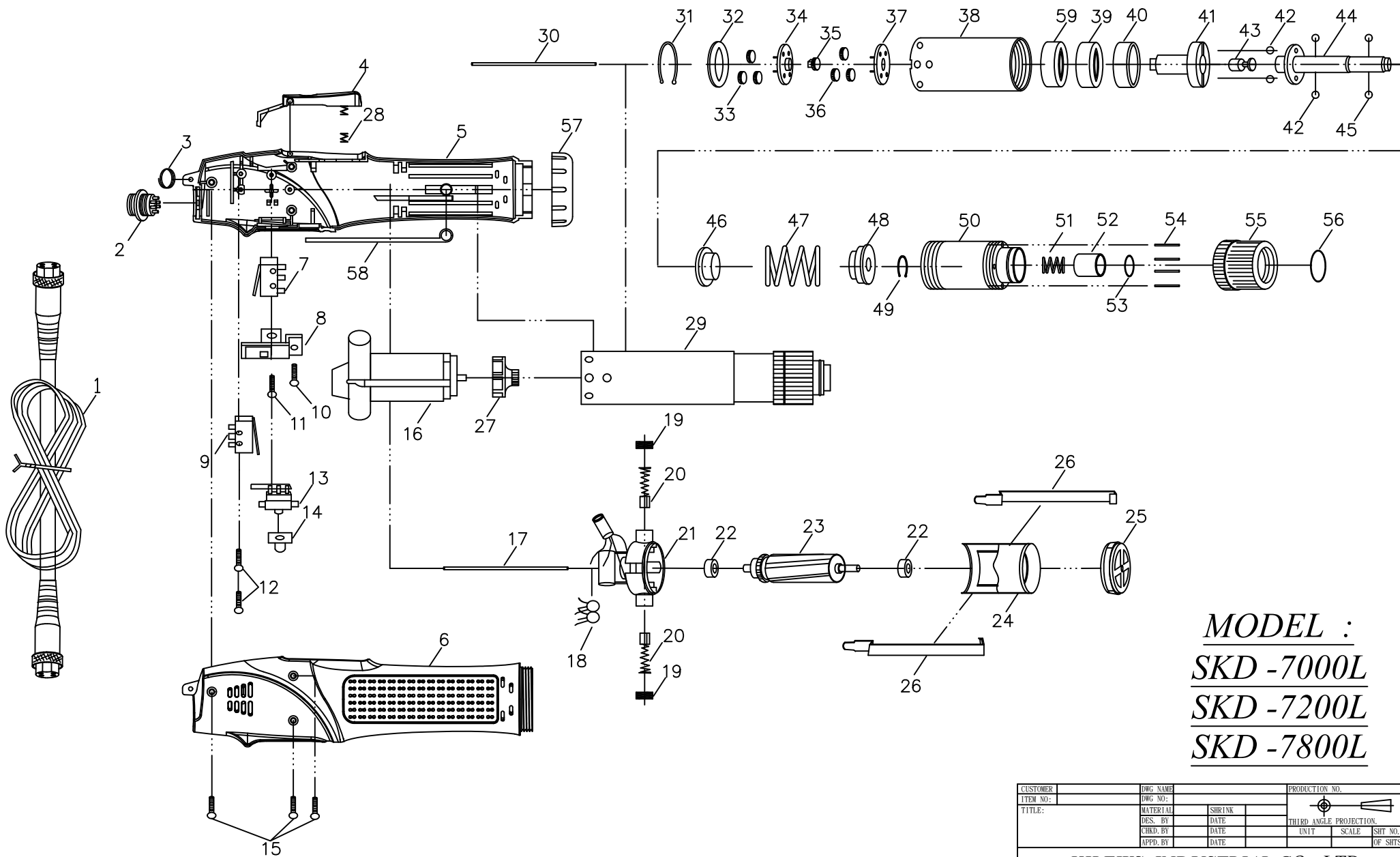
* 1N.m=10.2Kgf.cm 1N.m=8.85Lbf.in

Accessories

- 1、BIT Type :
- No. 00 Bit use in dia 1.3~1.8mm screw
 - No. 0 Bit use in dia 1.8~2.0mm screw
 - No. 1 Bit use in dia 2.0~2.6mm screw
 - No. 2 Bit use in dia 3.0~4.0mm screw

SKD-7000L	with BIT	1# & 2#	1 Pcs. Each
SKD-7200L	with BIT	1# & 2#	1 Pcs. Each
SKD-7800L	with BIT	2#	2 Pcs.
SKD-7800LF	with BIT	1# & 2#	1 Pcs. Each

- 2、Suspension rack and Torque fixing ring acceptable for use with the tool are available from KILEWS catalogue.

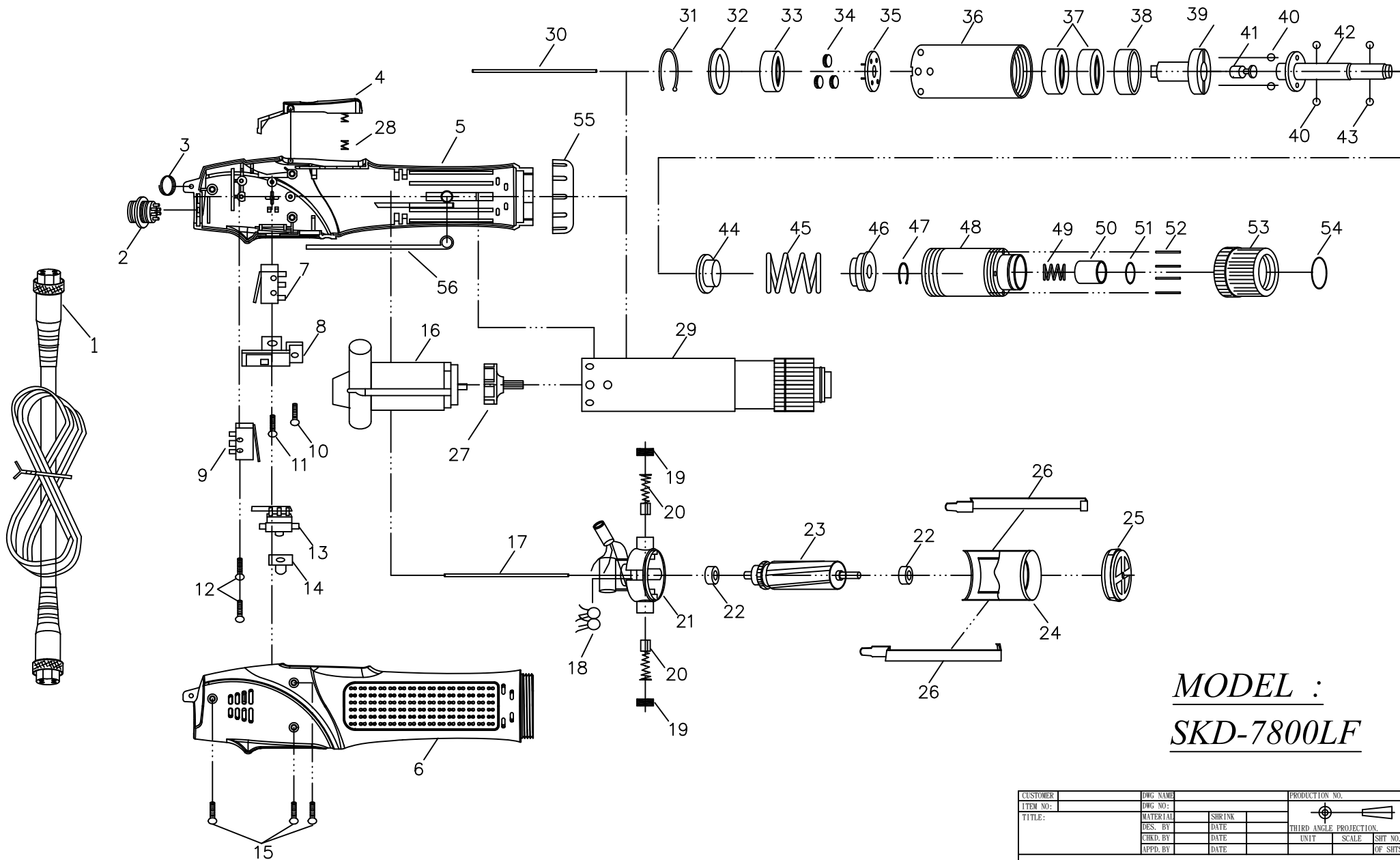


MODEL :
SKD -7000L
SKD -7200L
SKD -7800L

CUSTOMER	DWG NAME	PRODUCTION NO.	
ITEM NO:	DWG NO:		
TITLE:	MATERIAL	SHRINK	THIRD ANGLE PROJECTION
	DES. BY	DATE	UNIT
	CHKD. BY	DATE	SCALE
	APPD. BY	DATE	SHT NO.
			OF SHTS.

KILEWS INDUSTRIAL CO., LTD.

NO	PARTS NO	PARTS NAME-E	PARTS NAME-C	Q'ty	NO	PARTS NO	PARTS NAME-E	PARTS NAME-C	Q'ty
1	AA50001	CORD ASSEMBLY 2M	電源線 2M	1		GI28444	IRON WASHER-7200L,7800L	齒輪固定片-7200L,7800L	1
2	PZ50160	CONNECTOR	六芯插座	1	33	GH20241	IDLE GEAR FOR "7000L"	游星齒輪(7000L)	3
3	CJ20011	SUSPENSION RING	起子吊環	1		GH91232	IDLE GEAR FOR "7200L"	游星齒輪(7200L)	3
4	CC70010	TRIGGER ASSEMBLY	手按開關半成品	1		GH92231	IDLE GEAR FOR "7800L"	游星齒輪(7800L)	4
	CC70011	TRIGGER ASSEMBLY-ESD	手按開關半成品-ESD	1	34	GG21231	GEAR SEAT FOR "7000L"	上齒盤(7000L)	1
5	CB71031-6	HOUSING-UNDERSIDE	外殼下蓋	1		GG91242-1	GEAR SEAT FOR "7200L"	上齒盤(7200L)	1
	CB71031-7	HOUSING-UNDERSIDE-ESD	外殼下蓋-ESD	1		GG92241-1	GEAR SEAT FOR "7800L"	上齒盤(7800L)	1
6	CA71201-6	HOUSING-UPSIDE	外殼上蓋	1	35	G20102	CENTRAL GEAR FOR "7000L"	中心齒(7000L)	1
	CA71201-7	HOUSING-UPSIDE-ESD	外殼上蓋-ESD	1	36	GH20241	IDLE GEAR FOR "7000L"	游星齒輪(7000L)	3
7	HB91061	SHUT OFF SWITCH	剎車開關	1		GH91232-1	IDLE GEAR FOR "7200L"	游星齒輪(7200L)	3
8	CE90101-1	SWITCH BASE	三合一開關架	1		GH92231-1	IDLE GEAR FOR "7800L"	游星齒輪(7800L)	4
9	HB50061	START SWITCH	啟動開關	1	37	GG21231	GEAR SEAT FOR "7000L"	下齒盤(7000L)	1
10	CH90121	SCREW	螺絲	1		GG91272-1	GEAR SEAT FOR "7200L"	下齒盤(7200L)	1
11	CH90131	SCREW	螺絲	1		GG92271-1	GEAR SEAT FOR "7800L"	下齒盤(7800L)	1
12	CH90151-1	SCREW	螺絲	2	38	GA21241	GEAR CASE FOR "7000L"	上離合器筒(7000L)	1
13	HA28071F	CHANGEOVER SWITCH	正反開關	1		GA35241	GEAR CASE FOR "7200L&7800L"	上離合器筒(7200L&7800L)	1
14	CI60213	CHANGEOVER SWITCH CAP-7000L	正反開關帽蓋(7000L)	1	39	GN21251	MAIN BEARING	離合器主軸承	1
	CI60214	CHANGEOVER SWITCH CAP-7200L	正反開關帽蓋(7200L)	1	40	GW21531	IRON RING	鐵墊圈	1
	CI60212	CHANGEOVER SWITCH CAP-7800L	正反開關帽蓋(7800L)	1	41	GC31321	CAM	上離合器頭	1
15	CH20102	SCREW	螺絲	3	42	GP30351	STELL BALLS(4mm)	跳脫&酒杯鋼珠(4mm)	4
16	MO70051-3	MOTOR ASSEMBLY	馬達整組	1	43	GU30370	STOP PILOT "LA,LAD"	酒杯(LA,LAD)	1
17	MI31611	PILOT ROD	開關引導棒	1		GU30371	STOP PILOT(LB)	酒杯(LB)	1
18	EB33610-2	CERAMICS CAPACITOR	陶瓷電容	1	44	GD31351A	SHAFT FOR "A"TYPE	傳動軸 5.0mm	1
19	MD20151	BRUSH CAP	碳刷蓋	2		GD31353B	SHAFT FOR "B"TYPE	傳動軸 6.35mm	1
20	MC71411	CARBON	碳刷	2		GD31351AD	SHAFT FOR "AD"TYPE	傳動軸 5.0mm	1
21	ML70531	MOTOR TOP COVER	碳刷座半成品	1	45	GP21291A	BIT PILOT FOR HEX 5.0mm	起子頭帽鋼珠A、AD頭用	2
22	ME21481	BALL BEARING	軸承	2		GP21291B	BIT PILOT FOR HEX 6.35mm	起子頭帽鋼珠B頭用	2
23	MH70571-1	ARMATURE	電樞	1	46	GF31371	WARING PLATE-HEX 5.0mm	扭力推盤-HEX 5.0mm	1
24	MJ90601	MOTOR YOKE ASSEMBLY	鐵圈連磁鐵	1		GF31372	WARING PLATE-HEX 6.35mm	扭力推盤-HEX 6.35mm	1
25	MB21521A	MOTOR END COVER	馬達前蓋	1	47	GE90361-7	WARING SPRING FOR "7000L"	扭力彈簧(7000L)	1
26	MA21491B	ASSEMBLING SPRING	馬達固定片	2		GE90361-7B	WARING SPRING FOR "7200L"	扭力彈簧(7200L)	1
27	MK21111	FAN FOR "7000L"	風扇(7000L)	1		GE90361-7E	WARING SPRING FOR "7800L"	扭力彈簧(7800L)	1
	MK91091	FAN FOR "7200L"	風扇(7200L)	1	48	GY21321	WARING SPRING BASE-LB	止推盤-LB	1
	MK92091	FAN FOR "7800L"	風扇(7800L)	1		GY31391	WARING SPRING BASE-LA	止推盤-LA	1
28	CK28031-1	TRIGGER SPRING	壓板彈簧	1	49	GK20231B	"C"RING	傳動軸固定 C環	1
29	GZ71091A	CLUTCH ASSEMBLY FOR "7000A"	離合器整組(7000LA)	1	50	GB21331	CLUTCH CASE	下離合器筒	1
	GZ71091B	CLUTCH ASSEMBLY FOR "7000B"	離合器整組(7000LB)	1	51	GO21341	BIT SPRING	起子頭帽彈簧	1
	GZ71091AD	CLUTCH ASSEMBLY FOR "7000AD"	離合器整組(7000LAD)	1	52	GJ21351	BIT SLEEVE	起子頭帽	1
	GZ71091-2A	CLUTCH ASSEMBLY FOR "7200A"	離合器整組(7200LA)	1	53	GQ21361	"C"RING	起子頭帽 C環	1
	GZ71091-2B	CLUTCH ASSEMBLY FOR "7200B"	離合器整組(7200LB)	1	54	GL21371	TORQUE ADJUSTING PINS	扭力調整棒	4
	GZ71091-2AD	CLUTCH ASSEMBLY FOR "7200AD"	離合器整組(7200LAD)	1	55	GM21381	TORQUE ADJUSTING RING	扭力調整環	1
	GZ71091-8A	CLUTCH ASSEMBLY FOR "7800A"	離合器整組(7800LA)	1	56	GS21391	"C"RING	扭力環 C環	1
	GZ71091-8B	CLUTCH ASSEMBLY FOR "7800B"	離合器整組(7800LB)	1	57	CD22078	COUPLER	前鎖環	1
	GZ71091-3AD	CLUTCH ASSEMBLY FOR "7800AD"	離合器整組(7800LAD)	1		CD22078-1	COUPLER-ESD	前鎖環-(ESD)	1
30	MI31221-1	PILOT ROD	開關引導棒	1	58	CH30671-1C	GROUNDING MEANS	接地線	1
31	GK21181	"C"RING	齒輪固定 C環	1	59	GN30442	MAIN BEARING	離合器主軸承	1
32	GI21191	IRON WASHER-7000L	齒輪固定片-7000L	1					



MODEL :
SKD-7800LF

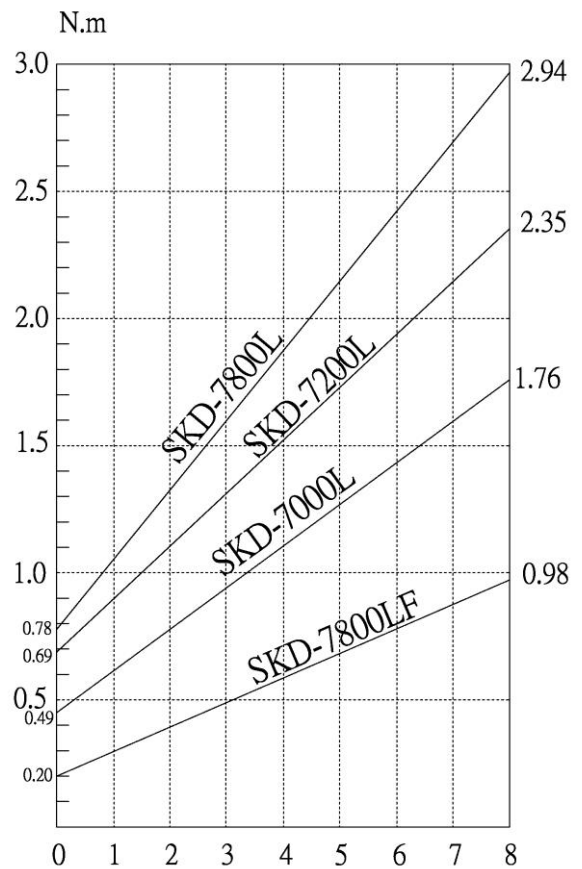
CUSTOMER	DWG NAME	PRODUCTION NO.		
ITEM NO:	DWG NO:			
TITLE:	MATERIAL	SHRINK		
	DES. BY	DATE	THIRD ANGLE PROJECTION	
	CHKD. BY	DATE	UNIT	SCALE
	APPD. BY	DATE		SHT NO. OF SHTS.
KILEWS INDUSTRIAL CO., LTD.				

NO	PARTS NO	PARTS NAME-E	PARTS NAME-C	Q'ty	NO	PARTS NO	PARTS NAME-E	PARTS NAME-C	Q'ty
1	AA50001	CORD ASSEMBLY 2M	電源線 2M	1	30	MI31221-1	PILOT ROD	開關引導棒	1
2	PZ50160	CONNECTOR	六芯插座	1	31	GK21181	"C"RING	齒輪固定 C環	1
3	CJ20011	SUSPENSION RING	起子吊環	1	32	GI21191	IRON WASHER	齒輪固定片	1
4	CC70010	TRIGGER ASSEMBLY	手按開關半成品	1	33	G21301	SPACER	快速齒輪墊圈	1
	CC70011	TRIGGER ASSEMBLY-ESD	手按開關半成品-ESD	1	34	GH21221-1	IDLE GEAR	游星齒輪	3
5	CB71031-6	HOUSING-UNDERSIDE	外殼下蓋	1	35	GG21231-1	GEAR SEAT	下齒盤	1
	CB71031-7	HOUSING-UNDERSIDE-ESD	外殼下蓋-ESD	1	36	GA21241	GEAR CASE	上離合器筒	1
6	CA71201-6	HOUSING-UPSIDE	外殼上蓋	1	37	GN21251	MAIN BEARING	離合器主軸承	2
	CA71201-7	HOUSING-UPSIDE-ESD	外殼上蓋-ESD	1	38	GW21531	IRON RING	鐵墊圈	1
7	HB91061	SHUT OFF SWITCH	剎車開關	1	39	GC31321	CAM	上離合器頭	1
8	CE90101-1	SWITCH BASE	三合一開關架	1	40	GP30351	STELL BALLS(4mm)	跳脫&酒杯鋼珠(4mm)	4
9	HB50061	START SWITCH	啟動開關	1	41	GU30370	STOP PILOT "LA,LAD"	酒杯(LA,LAD)	1
10	CH90121	SCREW	螺絲	1		GU30371	STOP PILOT(LB)	酒杯(LB)	1
11	CH90131	SCREW	螺絲	1	42	GD31351A	SHAFT FOR "A"TYPE	傳動軸 5.0mm	1
12	CH90151-1	SCREW	螺絲	2		GD31353B	SHAFT FOR "B"TYPE	傳動軸 6.35mm	1
13	HA28071F	CHANGEOVER SWITCH	正反開關	1		GD31351AD	SHAFT FOR "AD"TYPE	傳動軸 5.0mm	1
14	CI60212	CHANGEOVER SWITCH CAP	正反開關帽蓋	1	43	GP21291A	BIT PILOT FOR HEX 5.0mm	起子頭帽鋼珠A、AD頭用	2
15	CH20102	SCREW	螺絲	3		GP21291B	BIT PILOT FOR HEX 6.35mm	起子頭帽鋼珠B頭用	2
16	MO70051-3	MOTOR ASSEMBLY	馬達整組	1	44	GF31371	WARING PLATE FOR HEX 5.0mm	扭力推盤-HEX 5.0mm	1
17	MI31611	PILOT ROD	開關引導棒	1		GF31372	WARING PLATE FOR HEX 6.35mm	扭力推盤-HEX 6.35mm	1
18	EB33610-2	CERAMICS CAPACITOR	陶瓷電容	1	45	GE90361-7M	WARING SPRING	扭力彈簧	1
19	MD20151	BRUSH CAP	碳刷蓋	2	46	GY21321	WARING SPRING BASE-LB	止推盤-LB	1
20	MC71411	CARBON	碳刷	2		GY31391	WARING SPRING BASE-LA	止推盤-LA	1
21	ML70531	MOTOR TOP COVER	碳刷座半成品	1	47	GK20231B	"C"RING	傳動軸固定 C環	1
22	ME21481	BALL BEARING	軸承	2	48	GB21331	CLUTCH CASE	下離合器筒	1
23	MH70571-1	ARMATURE	電樞	1	49	GO21341	BIT SPRING	起子頭帽彈簧	1
24	MJ90601	MOTOR YOKE ASSEMBLY	鐵圈連磁鐵	1	50	GJ21351	BIT SLEEVE	起子頭帽	1
25	MB21521A	MOTOR END COVER	馬達前蓋	1	51	GQ21361	"C"RING	起子頭帽 C環	1
26	MA21491B	ASSEMBLING SPRING	馬達固定片	2	52	GL21371	TORQUE ADJUSTING PINS	扭力調整棒	4
27	MK21111PF	FAN	風扇	1	53	GM21381	TORQUE ADJUSTING RING	扭力調整環	1
28	CK28031-1	TRIGGER SPRING	壓板彈簧	1	54	GS21391	"C"RING	扭力環 C環	1
29	GZ71091-8AF	CLUTCH ASSEMBLY FOR "7800LAF"	離合器整組(7800LAF)	1	55	CD22078	COUPLER	前鎖環	1
	GZ71091-8BF	CLUTCH ASSEMBLY FOR "7800LBF"	離合器整組(7800LBF)	1		CD22078-1	COUPLER-ESD	前鎖環-(ESD)	1
	GZ71091-8ADF	CLUTCH ASSEMBLY FOR "7800LADF"	離合器整組(7800LADF)	1	56	CH30671-1C	GROUNDING MEANS	接地線	1

Torque Adjustment Operation

To adjust the torque on these screwdrivers. Proceed as follows :

1. Determine the torque output of the tool by checking a tightened Fastener with a torque wrench.
2. Increase or decrease the torque by rotating the Spring Adjusting Ring. Rotating the Ring clockwise to a higher number on the torque Scale increase torque output while rotating the Ring counterclockwise to a lower number decreases the torque output.
3. Check the adjustment with a torque wrench. A number of factors will affect torque output from one job to another. Final torque adjustment should be made at the job through a of series of gradual increase. Always start below the desired torque and work upward.
4. Adjust the bit torque by changing the driving in length of the adjust ring at the end.
5. The relationship between torque scale and bit torque is as shown Ring, in the torque diagram. The figures of torque scale do not indicate bit torque values. However, the clamping torque of screw itself is different form type, size, material of the screw and the material of its mating part. Use it as standard to obtain an appropriate clamping torque.
6. The (Return torque method) in which once-clamped screw is returned with torque wrench or the like is available as one of torque control methods however, note that the measured values by the return torque method generally appear in 10%~30% lower than the actually clamping torque.
7. The torque checker measures the torque of screwdriver. The clamping torque of screw itself is different from the clamped conditions. Understand the correlation between clamping torque values and the torque checker values perform the torque control properly.

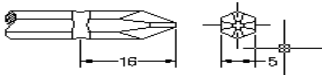
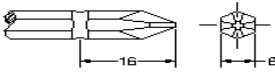


CAUTION

1. Also in reverse rotation, the clutch is turned off in such manner as in normal rotation, stopping the motor running. Accordingly, when the screw tightened at a large torque, set it to a higher torque scale.
2. The number from zero to eight on the Torque Scale are reference number only and not an indication of actual torque output.
3. The power supplier will generate low power when the button of the power controller is switched to "LO." Also, the electric screwdriver's torque output setting value should be adjusted to middle torsion value accordingly.



Specifications

MODEL	SKD-7000P	SKD-7200P	SKD-7800P	SKD-7800PF	
Input voltage (DC)	DC 24V / 32V				
Rated input	50W				
Bit torque	(kgf.cm)	5~18	7~24	8~30	2~10
	(Lbf.in)	4.34~15.58	6.11~20.8	6.9~26.02	1.77~8.67
	(N.m)	0.49~1.76	0.69~2.35	0.78~2.94	0.2~0.98
Torque Accuracy (%)	±3%				
Torque Adjustment	Stepless				
Rev speed at no load (R.p.m)	HI	1000	750	530	2000
	LO	700	520	350	-
Metal assembly screw (mm)	Machine screw	2.0~3.5	2.6~4.0	3.0~5.0	2.0~3.0
	Tapping screw	2.0~3.0	2.6~3.5	3.0~4.0	2.0~2.6
Weight (g)	600				
Length (mm)	260				
Model of Torque Fixing Ring	KC-2、KC-2S				
Power controller	SKP-32HL				
Model of Suspension Rack	KH-2、(KC & KH-1)				
Bit Type	 HEX 5mm,		 HEX 6.35mm		

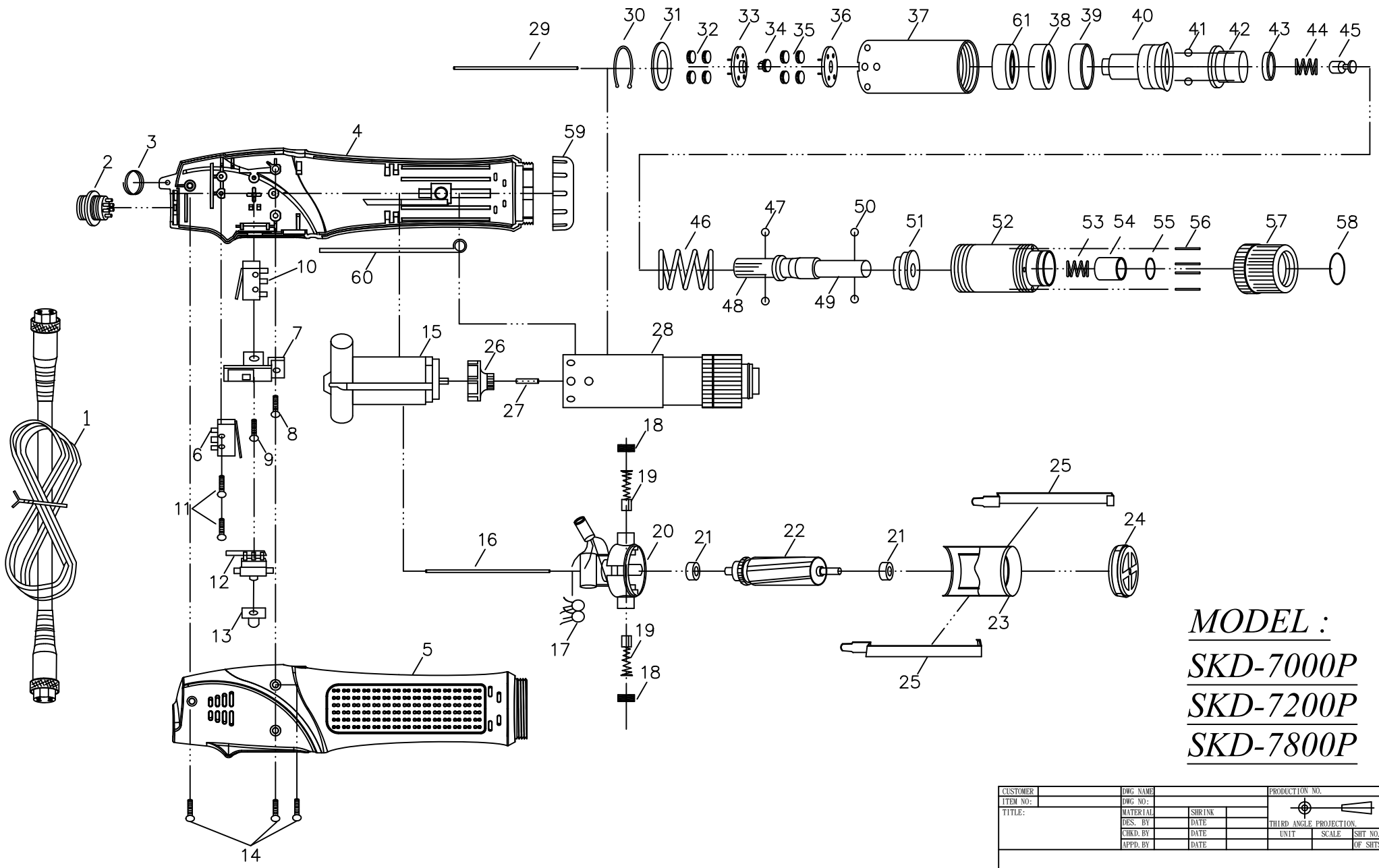
* 1N.m=10.2Kgf.cm 1N.m=8.85Lbf.in

Accessories

1. BIT Type :
- No. 00 . . . Bit use in dia 1.3~1.8mm screw
 - No. 0 Bit use in dia 1.8~2.0mm screw
 - No. 1 Bit use in dia 2.0~2.6mm screw
 - No. 2 Bit use in dia 3.0~4.0mm screw

SKD-7000P	with BIT	1# & 2#	1 Pce. Each
SKD-7200P	with BIT	1# & 2#	1 Pce. Each
SKD-7800P	with BIT	2#	2 Pce.
SKD-7800PF	with BIT	1# & 2#	1 Pce. Each

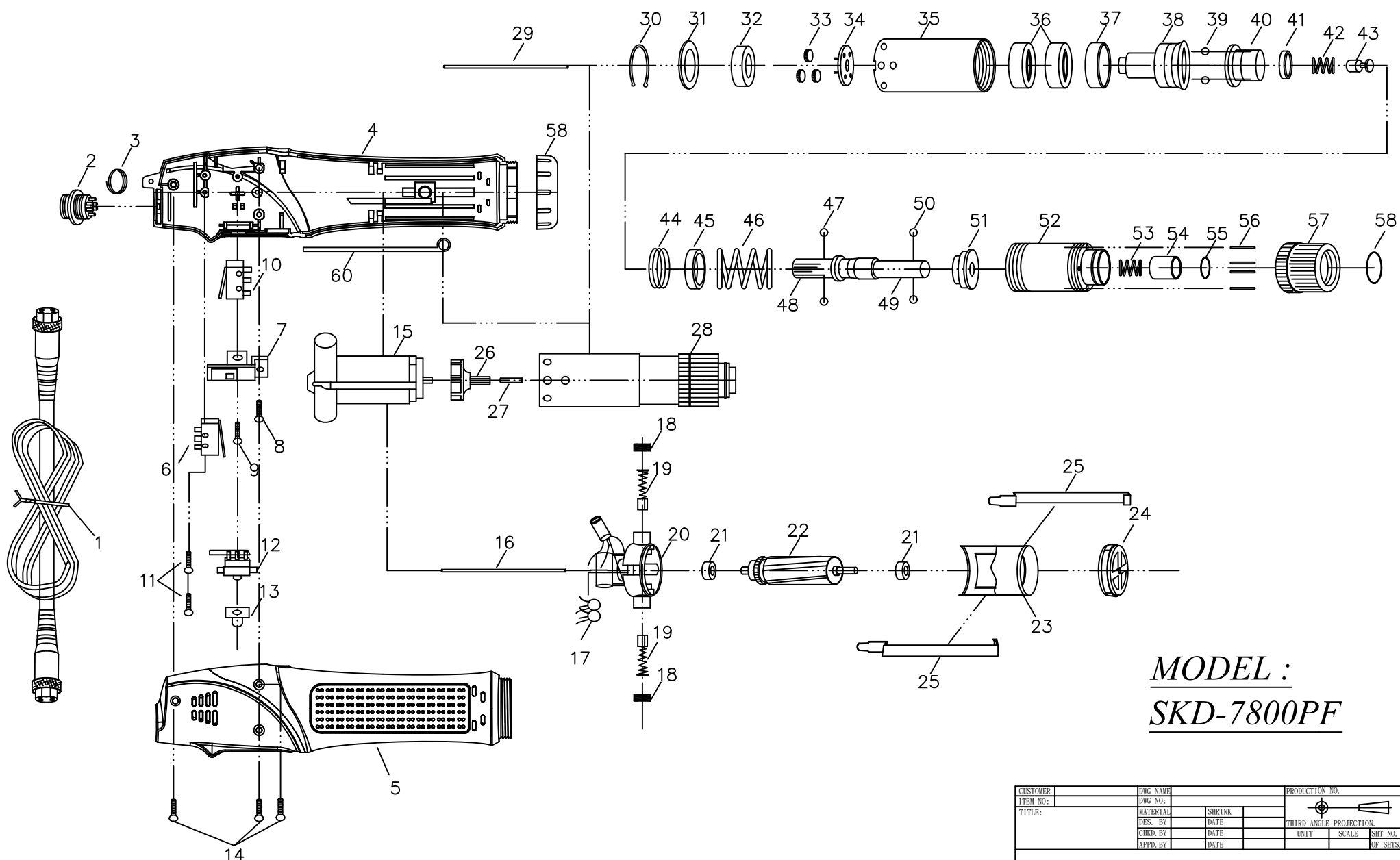
2.Suspension rack and Torque fixing ring acceptable for use with the tool are available from KILEWS catalogue.



MODEL :
SKD-7000P
SKD-7200P
SKD-7800P

CUSTOMER	DWG. NAME			PRODUCTION NO.		
ITEM NO.	DWG. NO.					
TITLE:	MATERIAL	SHRINK		THIRD ANGLE PROJECTION		
	DES. BY	DATE		UNIT	SCALE	SHT NO.
	CHKD. BY	DATE				OF SHTS.
	APPD. BY	DATE				

NO	PARTS NO	PARTS NAME-E	PARTS NAME-C	Q'ty	NO	PARTS NO	PARTS NAME-E	PARTS NAME-C	Q'ty
1	AA50001	CORD ASSEMBLY 2M	電源線 2M	1		GH91232	IDLE GEAR FOR "7200P"	游星齒輪(7200P)	3
2	PZ50160	CONNECTOR	六芯插座	1		GH92231	IDLE GEAR FOR "7800P"	游星齒輪(7800P)	4
3	CJ20011	SUSPENSION RING	起子吊環	1	33	GG21231	GEAR SEAT FOR "7000P"	上齒盤(7000P)	1
4	CB71101	HOUSING-UNDERSIDE	外殼下蓋	1		GG91242-1	GEAR SEAT FOR "7200P"	上齒盤含中心齒(7200P)	1
	CB71101-5	HOUSING-UNDERSIDE-ESD	外殼下蓋-ESD	1		GG92241-1	GEAR SEAT FOR "7800P"	上齒盤含中心齒(7800P)	1
5	CA71301	HOUSING-UPSIDE	外殼上蓋	1	34	G20102	CENTRAL GEAR	中心齒	1
	CA71301-5	HOUSING-UPSIDE-ESD	外殼上蓋-ESD	1	35	GH20241	IDLE GEAR FOR "7000P"	游星齒輪(7000P)	3
6	H10201	SHUT OFF SWITCH	剎車開關	1		GH91232-1	IDLE GEAR FOR "7200P"	游星齒輪(7200P)	3
7	CE90101-1	SWITCH BASE	三合一開關架	1		GH92231-1	IDLE GEAR FOR "7800P"	游星齒輪(7800P)	4
8	CH90121	SCREW	螺絲	1	36	GG21231	GEAR SEAT FOR "7000P"	上齒盤(7000P)	1
9	CH90131	SCREW	螺絲	1		GG91272-1	GEAR SEAT FOR "7200P"	下齒盤(7200P)	1
10	H10201	START SWITCH	啟動開關	1		GG92271-1	GEAR SEAT FOR "7800P"	下齒盤(7800P)	1
11	CH90151-1	SCREW	螺絲	2	37	GA21241	GEAR CASE FOR "7000P"	上離合器筒(7000P用)	1
12	HA28071F	CHANGEOVER SWITCH	正反開關	1		GA35241	GEAR CASE FOR "7200P&7800P"	上離合器筒(7200&7800P用)	1
13	CI60213	CHANGEOVER SWITCH CAP-7000P	正反開關帽蓋(7000P)	1	38	GN21251	MAIN BEARING	離合器主軸承	1
	CI60214	CHANGEOVER SWITCH CAP-7200P	正反開關帽蓋(7200P)	1	39	GW21532	IRON RING	鐵墊圈	1
	CI60212	CHANGEOVER SWITCH CAP-7800P	正反開關帽蓋(7800P)	1	40	GX90303	SHAFT GUIDE	上離合器頭	1
14	CH20102	SCREW	螺絲	3	41	GP30351	STELL BALLS	跳脫鋼珠	2
15	MO70051-3	MOTOR ASSEMBLY	馬達整組	1	42	GF90321-1	WARING PLATE	扭力推盤	1
16	MI90481	PILOT ROD	開關引導棒	1	43	GV90331	INNER SPRING CAP	下壓式內彈簧蓋	1
17	EB33610-2	CERAMICS CAPACITOR	陶瓷電容	1	44	GO90341	INNER SPRING	下壓式內彈簧	1
18	MD20151	BRUSH CAP	碳刷蓋	2	45	GU30370	STOP PILOT	酒杯	1
19	MC71411	CARBON	碳刷	2	46	GE90361-8	WARING SPRING FOR "7000P"	扭力彈簧(7000P)	1
20	ML70531	MOTOR TOP COVER	碳刷座半成品	1		GE90361-8B	WARING SPRING FOR "7200P"	扭力彈簧(7200P)	1
21	ME21481	BALL BEARING	軸承	2		GE90361-8E	WARING SPRING FOR "7800P"	扭力彈簧(7800P)	1
22	MH70571-1	ARMATURE	電樞	1	47	GP30351	STELL BALLS	酒杯鋼珠	2
23	MJ90601	MOTOR YOKE ASSEMBLY	鐵圈連磁鐵	1	48	GD91402	SHAFT "7000P"	六角軸(7000P)	1
24	MB21521A	MOTOR END COVER	馬達前蓋	1		GD91402-1	SHAFT "7200P 7800P"	六角軸(7200P 7800P)	1
25	MA21491B	ASSEMBLING SPRING	馬達固定片	2	49	GT91401A	BIT HOLDER FOR "A"TYPE "7000P"	起子頭 5.0mm(7000P)	1
26	MK21111	FAN FOR "7000P"	風扇(7000P)	1		GT91401C	BIT HOLDER FOR "B"TYPE "7000P"	起子頭 6.35mm(7000P)	1
	MK91091	FAN FOR "7200P"	風扇(7200P)	1		GT91401AD	BIT HOLDER FOR "AD"TYPE "7000P"	起子頭 5.0mm, ϕ 5.0(7000P)	1
	MK92091	FAN FOR "7800P"	風扇(7800P)	1		GT91401A-1	BIT HOLDER FOR "A"TYPE "7200P 7800P"	起子頭 5.0mm(7200P 7800P)	1
27	MG91081	PILOT ROD	陶瓷棒	1		GT91401C-1	BIT HOLDER FOR "B"TYPE "7200P 7800P"	起子頭 6.35mm(7200P 7800P)	1
28	GZ70091A	CLUTCH ASSEMBLY FOR "7000PA"	離合器整組(7000PA)	1		GT91401AD-1	BIT HOLDER FOR "AD"TYPE "7200P 7800P"	起子頭 5.0mm, ϕ 5.0(7200P 7800P)	1
	GZ70091B	CLUTCH ASSEMBLY FOR "7000PB"	離合器整組(7000PB)	1	50	GP21291A	BIT PILOT FOR HEX 5.0mm	起子頭帽鋼珠A頭用	2
	GZ70091-1AD	CLUTCH ASSEMBLY FOR "7000PAD"	離合器整組(7000PAD)	1		GP21291B	BIT PILOT FOR HEX 6.35mm	起子頭帽鋼珠B頭用	2
	GZ70091-2A	CLUTCH ASSEMBLY FOR "7200PA"	離合器整組(7200PA)	1	51	GY21321	WARING SPRING BASE	止推盤	1
	GZ70091-2B	CLUTCH ASSEMBLY FOR "7200PB"	離合器整組(7200PB)	1	52	GB21331	CLUTCH CASE	下離合器筒	1
	GZ70091-2AD	CLUTCH ASSEMBLY FOR "7200PAD"	離合器整組(7200PAD)	1	53	GO21341	BIT SPRING	起子頭帽彈簧	1
	GZ70091-8A	CLUTCH ASSEMBLY FOR "7800PA"	離合器整組(7800PA)	1	54	GJ21351	BIT SLEEVE	起子頭帽	1
	GZ70091-8B	CLUTCH ASSEMBLY FOR "7800PB"	離合器整組(7800PB)	1	55	GQ21361	"C"RING	起子頭帽 C環	1
	GZ70091-3AD	CLUTCH ASSEMBLY FOR "7800PAD"	離合器整組(7800PAD)	1	56	GL21371	TORQUE ADJUSTING PINS	扭力調整棒	4
29	MI90201	PILOT ROD	開關引導棒	1	57	GM21381	TORQUE ADJUSTING RING	扭力調整環	1
30	GK21181	"C"RING	齒輪固定 C環	1	58	GS21391	"C"RING	扭力環 C環	1
31	GI21191	IRON WASHER-7000P	齒輪固定片-7000P	1	59	CD22078	COUPLER	前鎖環	1
	GI28444	IRON WASHER-7200P,7800P	齒輪固定片-7200P,7800P	1		CD22078-1	COUPLER-ESD	前鎖環-(ESD)	1
32	GH20241	IDLE GEAR FOR "7000P"	游星齒輪(7000P)	3	60	CH30671-1C	GROUNDING MEANS	接地線	1
					61	GN30442	MAIN BEARING	離合器主軸承	1



MODEL :
SKD-7800PF

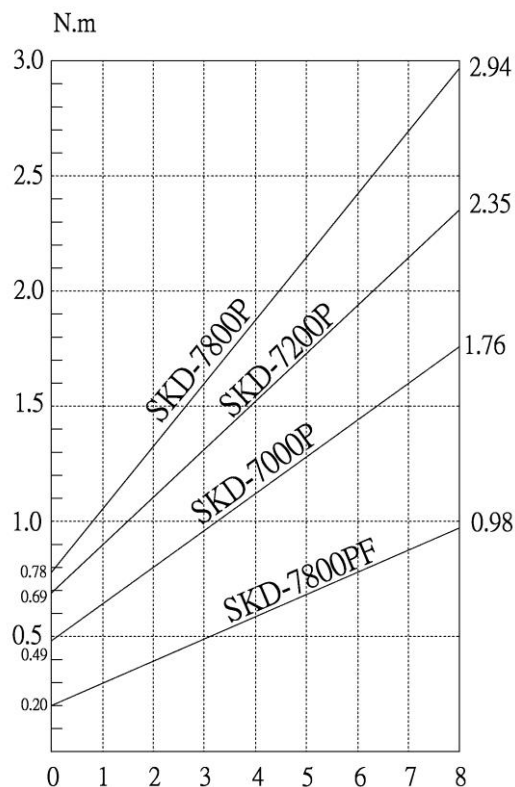
CUSTOMER	DWG NAME	PRODUCTION NO.		
ITEM NO:	DWG NO:	 THIRD ANGLE PROJECTION		
TITLE:	MATERIAL			
	DES. BY			SHRINK
	DATE			UNIT
	DATE			SCALE
	CHKD. BY	DATE	SHT NO.	
	APPD. BY	DATE	OF SHTS.	

NO	PARTS NO	PARTS NAME-E	PARTS NAME-C	Q'ty	NO	PARTS NO	PARTS NAME-E	PARTS NAME-C	Q'ty
1	AA50001	CORD ASSEMBLY 2M	電源線 2M	1	33	GH21221-1	IDLE GEAR	游星齒輪	3
2	PZ50160	CONNECTOR	六芯插座	1	34	GG21231-1	GEAR SEAT	下齒盤	1
3	CJ20011	SUSPENSION RING	起子吊環	1	35	GA21241	GEAR CASE	上離合器筒	1
4	CB71101	HOUSING-UNDERSIDE	外殼下蓋	1	36	GN21251	MAIN BEARING	離合器主軸承	2
	CB71101-5	HOUSING-UNDERSIDE-ESD	外殼下蓋-ESD	1	37	GW21532	IRON RING	鐵墊圈	1
5	CA71301	HOUSING-UPSIDE	外殼上蓋	1	38	GX90303	SHAFT GUIDE	上離合器頭	1
	CA71301-5	HOUSING-UPSIDE-ESD	外殼上蓋-ESD	1	39	GP30351	STELL BALLS	跳脫鋼珠	2
6	H10201	SHUT OFF SWITCH	剎車開關	1	40	GF90321-1	WARING PLATE	扭力推盤	1
7	CE90101-1	SWITCH BASE	三合一開關架	1	41	GV90331	INNER SPRING CAP	下壓式內彈簧蓋	1
8	CH90121	SCREW	螺絲	1	42	GO90341	INNER SPRING	下壓式內彈簧	1
9	CH90131	SCREW	螺絲	1	43	GU30370	STOP PILOT	酒杯	1
10	H10201	START SWITCH	啟動開關	1	44	GO30532-1	SPRING	兩段式小彈簧	1
11	CH90151-1	SCREW	螺絲	2	45	GO30532	SPRING CAP	彈簧蓋	1
12	HA28071F	CHANGEOVER SWITCH	正反開關	1	46	GE90361-9	WARING SPRING	扭力彈簧	1
13	CI60212	CHANGEOVER SWITCH CAP	正反開關帽蓋	1	47	GP30351	STELL BALLS	酒杯鋼珠	2
14	CH20102	SCREW	螺絲	3	48	GD91402	SHAFT "7000P"	六角軸	1
15	MO70051-3	MOTOR ASSEMBLY	馬達整組	1		GD91402-1	SHAFT "7200P 7800P"	六角軸	1
16	MI90481	PILOT ROD	開關引導棒	1		GT91401A	BIT HOLDER FOR "A"TYPE	起子頭 5.0mm	1
17	EB33610-2	CERAMICS CAPACITOR	陶瓷電容	1		GT91401C	BIT HOLDER FOR "B"TYPE	起子頭 6.35mm	1
18	MD20151	BRUSH CAP	碳刷蓋	2		GT91401AD	BIT HOLDER FOR "AD"TYPE	起子頭 5.0mm, ϕ 5.0	1
19	MC71411	CARBON	碳刷	2	49	GT91401A-1	BIT HOLDER FOR "A"TYPE	起子頭 5.0mm	1
20	ML70531	MOTOR TOP COVER	碳刷座半成品	1		GT91401C-1	BIT HOLDER FOR "B"TYPE	起子頭 6.35mm	1
21	ME21481	BALL BEARING	軸承	2		GT91401AD-1	BIT HOLDER FOR "AD"TYPE	起子頭 5.0mm, ϕ 5.0	1
22	MH70571-1	ARMATURE	電樞	1	50	GP21291A	BIT PILOT FOR HEX 5.0mm	起子頭帽鋼珠A頭用	2
23	MJ90601	MOTOR YOKE ASSEMBLY	鐵圈連磁鐵	1		GP21291B	BIT PILOT FOR HEX 6.35mm	起子頭帽鋼珠B頭用	2
24	MB21521A	MOTOR END COVER	馬達前蓋	1	51	GY21321	WARING SPRING BASE	止推盤	1
25	MA21491B	ASSEMBLING SPRING	馬達固定片	2	52	GB21331	CLUTCH CASE	下離合器筒	1
26	MK21111PF	FAN	風扇	1	53	GO21341	BIT SPRING	起子頭帽彈簧	1
27	MG30081-1	PILOT ROD	陶瓷棒	1	54	GJ21351	BIT SLEEVE	起子頭帽	1
28	GZ70091-8AF	CLUTCH ASSEMBLY FOR "7800PFA"	離合器整組(7800PFA)	1	55	GQ21361	"C"RING	起子頭帽 C環	1
	GZ70091-8BF	CLUTCH ASSEMBLY FOR "7800PFB"	離合器整組(7800PFB)	1	56	GL21371	TORQUE ADJUSTING PINS	扭力調整棒	4
	GZ70091-4AD	CLUTCH ASSEMBLY FOR "7800PFAD"	離合器整組(7800PFAD)	1	57	GM21381	TORQUE ADJUSTING RING	扭力調整環	1
29	MI90201	PILOT ROD	開關引導棒	1	58	GS21391	"C"RING	扭力環 C環	1
30	GK21181	"C"RING	齒輪固定 C環	1	59	CD22078	COUPLER	前鎖環	1
31	GI21191	IRON WASHER	齒輪固定片	1		CD22078-1	COUPLER-ESD	前鎖環-(ESD)	1
32	G21301	SPACER	快速墊圈	1	60	CH30671-1C	GROUNDING MEANS	接地線	1

Torque Adjustment Operation

To adjust the torque on these screwdrivers. Proceed as follows :

1. Determine the torque output of the tool by checking a tightened Fastener with a torque wrench.
2. Increase or decrease the torque by rotating the Spring Adjusting Ring. Rotating the Ring clockwise to a higher number on the torque Scale increase torque output while rotating the Ring counterclockwise to a lower number decreases the torque output.
3. Check the adjustment with a torque wrench. A number of factors will affect torque output from one job to another. Final torque adjustment should be made at the job through a series of gradual increase. Always start below the desired torque and work upward.
4. Adjust the bit torque by changing the driving in length of the adjust ring at the end.
5. The relationship between torque scale and bit torque is as shown Ring, in the torque diagram. The figures of torque scale do not indicate bit torque values. However, the clamping torque of screw itself is different from type, size, material of the screw and the material of its mating part. Use it as standard to obtain an appropriate clamping torque.
6. The (Return torque method) in which once-clamped screw is returned with torque wrench or the like is available as one of torque control methods however, note that the measured values by the return torque method generally appear in 10%~30% lower than the actually clamping torque.
7. The torque checker measures the torque of screwdriver. The clamping torque of screw itself is different from the clamped conditions. Understand the correlation between clamping torque values and the torque checker values perform the torque control properly.



CAUTION

1. Also in reverse rotation, the clutch is turned off in such manner as in normal rotation, stopping the motor running. Accordingly, when the screw tightened at a large torque, set it to a higher torque scale.
2. The number from zero to eight on the Torque Scale are reference number only and not an indication of actual torque output.
3. The power supplier will generate low power when the button of the power controller is switched to "LO." Also, the electric screwdriver's torque output setting value should be adjusted to middle torsion value accordingly.

