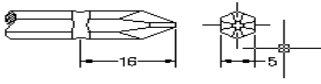
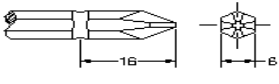


Specifications

MODEL		SKD-8300L	SKD-8400L	SKD-8500L	SKD-8300LF	SKD-8400LF
Input voltage (DC)		DC 24V / 32V				
Rated input		55W				
Bit torque	(kgf.cm)	6~22	10~30	15~45	5~12	10~30
	(Lbf.in)	5.22~19.12	8.67~26.02	13.0~39.02	4.34~10.44	8.67~26.02
	(N.m)	0.59~2.16	0.98~2.94	1.47~4.41	0.49~1.18	0.98~2.94
Torque Accuracy (%)		±3%				
Torque Adjustment		Stepless				
Rev speed at no load (R.p.m)	HI	1000	750	530	2000	1000
	LO	700	520	350	-	700
Metal assembly screw (mm)	Machine screw	2.6~4.0	3.0~5.0	4.0~6.0	2.0~3.0	3.0~5.0
	Tapping screw	2.0~3.5	2.6~4.0	3.0~5.0	2.0~2.6	2.6~4.0
Weight (g)		700				
Length (mm)		269				
Model of Torque Fixing Ring		KC-1 · KC-1S				
Power controller		SKP-32HL				
Model of Suspension Rack		KH-3 · (KC & KH-1)				
Bit Type		 HEX 5mm,		 HEX 6.35mm		

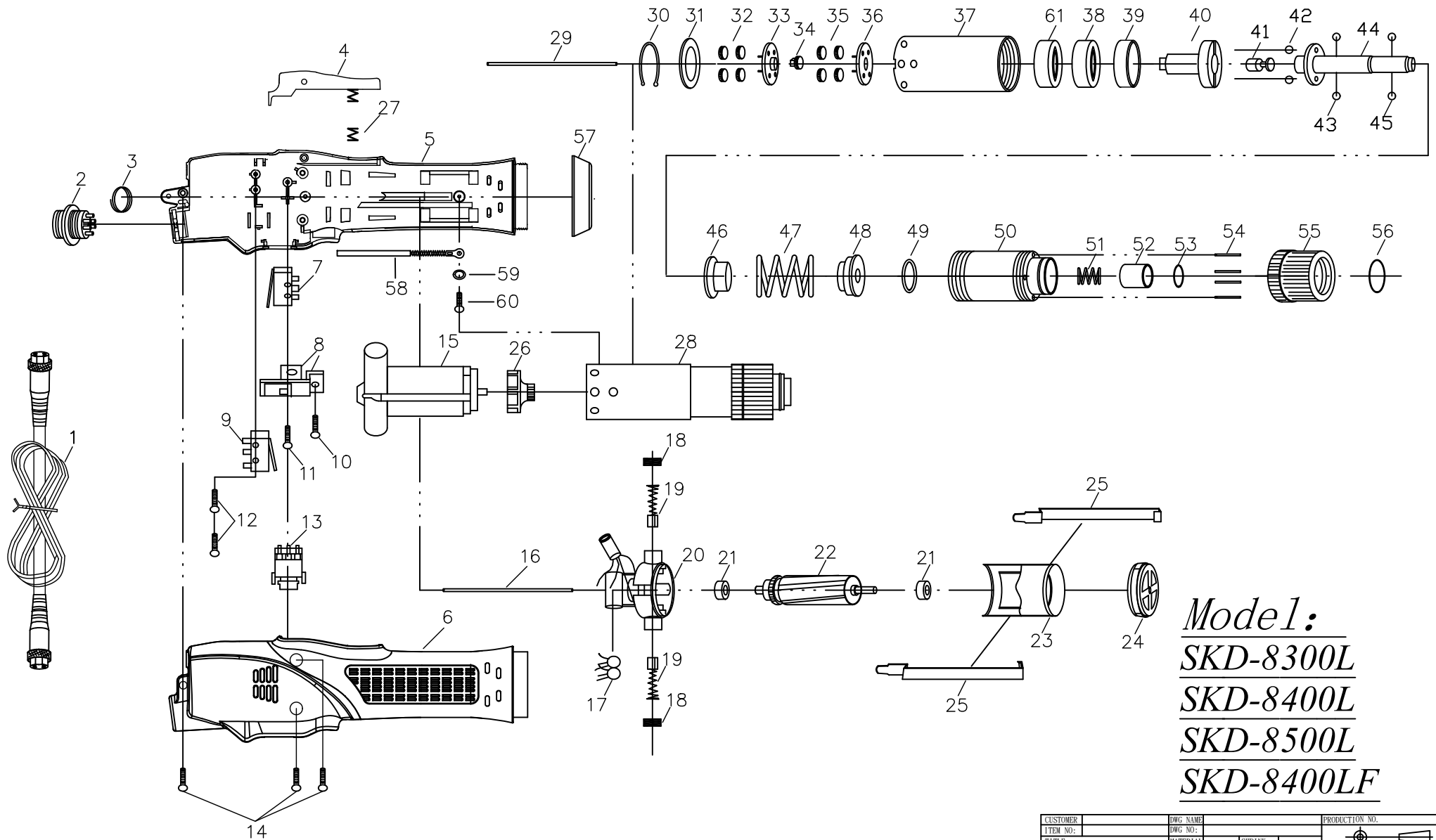
* 1N.m=10.2Kgf.cm 1N.m=8.85Lbf.in

Accessories

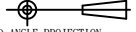
1. BIT Type :
- No. 00 Bit use in dia 1.3~1.8mm screw
 - No. 0 Bit use in dia 1.8~2.0mm screw
 - No. 1 Bit use in dia 2.0~2.6mm screw
 - No. 2 Bit use in dia 3.0~4.0mm screw

SKD-8300L.LF	with BIT	1# & 2#	1 Pce. Each
SKD-8400L.LF	with BIT	2#	2 Pce.
SKD-8500L	with BIT	2#	2 Pce.

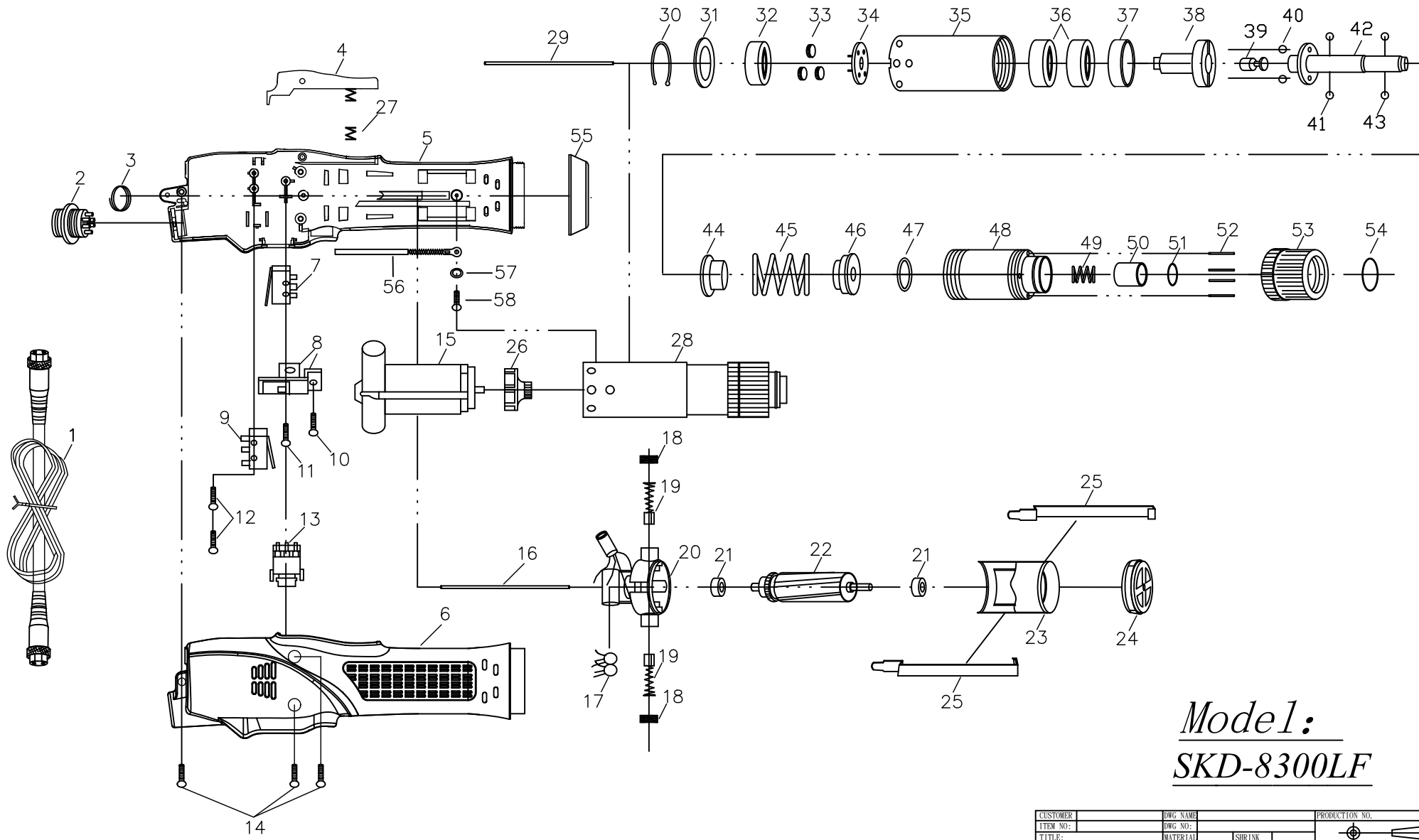
2.Suspension rack and Torque fixing ring acceptable for use with the tool are available from KILEWS catalogue.



Model:
SKD-8300L
SKD-8400L
SKD-8500L
SKD-8400LF

CUSTOMER	DWG NAME	PRODUCTION NO.		
ITEM NO:	DWG NO:			
TITLE:	MATERIAL	SHRINK	THIRD ANGLE PROJECTION	
	DES. BY	DATE	UNIT	SCALE
	CHKD. BY	DATE		SHT NO.
	APPD. BY	DATE		OF SHTS.

NO	PARTS NO	PARTS NAME-E	PARTS NAME-C	Qty	NO	PARTS NO	PARTS NAME-E	PARTS NAME-C	Qty
1	AA50001	CORD ASSEMBLY	電源線	1		GH91232	IDLE GEAR FOR "8400L"	游星齒輪(8400L)	3
2	PZ50160	CONNECTOR	六芯插座	1		GH92231	IDLE GEAR FOR "8500L"	游星齒輪(8500L)	4
3	CJ20011	SUSPENSION RING	起子吊環	1		GH21221-2	IDLE GEAR FOR "8400LF"	游星齒輪(8400LF)	4
4	CC70012	TRIGGER ASSEMBLY	手按開關半成品	1	33	GG21231	GEAR SEAT FOR "8300L"	上齒盤(8300L)	1
	CC70013	TRIGGER ASSEMBLY (ESD)	手按開關半成品(ESD)	1		GG91242-1	GEAR SEAT FOR "8400L"	上齒盤(8400L)	1
5	CB91101	HOUSING-UNDERSIDE	外殼下蓋	1		GG92241-1	GEAR SEAT FOR "8500L"	上齒盤(8500L)	1
	CB91106	HOUSING-UNDERSIDE (ESD)	外殼下蓋 (ESD)	1		GG20271	GEAR SEAT FOR "8400LF"	上齒盤(8400LF)	1
6	CA92101	HOUSING-UPSIDE	外殼上蓋	1	34	G20102	CENTRAL GEAR FOR "8300L" ONLY	中心齒(8300L)	1
	CA92106	HOUSING-UPSIDE (ESD)	外殼上蓋 (ESD)	1		G20104	CENTRAL GEAR FOR "8400LF" ONLY	中心齒(8400LF)	1
7	HB91061	SHUT OFF SWITCH	剎車開關	1	35	GH20241	IDLE GEAR FOR "8300L"	游星齒輪(8300L)	3
8	CE90101-1	SWITCH BASE	三合一開關架	1		GH91232-1	IDLE GEAR FOR "8400L"	游星齒輪(8400L)	3
9	HB50061	START SWITCH	啟動開關	1		GH92231-1	IDLE GEAR FOR "8500L"	游星齒輪(8500L)	4
10	CH90121	SCREW	螺絲	1		GH21221-2	IDLE GEAR FOR "8400LF"	游星齒輪(8400LF)	4
11	CH90131	SCREW	螺絲	1	36	GG21231	GEAR SEAT FOR "8300L"	下齒盤(8300L)	1
12	CH90151-1	SCREW	螺絲	2		GG91272-1	GEAR SEAT FOR "8400L"	下齒盤(8400L)	1
13	HA91041	CHANGEOVER SWITCH FOR "8300L"	正反開關(8300L)	1		GG92271-1	GEAR SEAT FOR "8500L"	下齒盤(8500L)	1
	HA91042	CHANGEOVER SWITCH FOR "8400L,8400LF"	正反開關(8400L,8400LF)	1		GG20271	GEAR SEAT FOR "8400LF"	下齒盤(8400LF)	1
	HA92051	CHANGEOVER SWITCH FOR "8500L"	正反開關(8500L)	1	37	GA91281	GEAR CASE FOR "8300L"	上離合器筒(8300L)	1
14	CH20102	SCREW	螺絲	3		GA91282	GEAR CASE FOR "8400L、8500L"	上離合器筒(8400L、8500L)	1
15	MO80081-1	MOTOR ASSEMBLY-8300L,8400L,8500L	馬達整組-8300L,8400L,8500L	1		GA91282-1	GEAR CASE FOR "8400LF"	上離合器筒(8400LF)	1
	MO80081-7	MOTOR ASSEMBLY-8400LF	馬達整組-8400LF	1	38	GN21251	MAIN BEARING	離合器主軸承	1
16	MI31611	PILOT ROD	開關引導棒	1	39	GW21532	IRON RING	鐵墊圈	1
17	EB33610-2	CERAMICS CAPACITOR	陶瓷電容	1	40	GC90302	CAM	上離合器頭	1
18	MD91531	BRUSH CAP	碳刷蓋	2	41	GU30370	STOP PILOT FOR "A"	酒杯(A)	1
19	MC71411-1	CARBON	碳刷	2		GU30371	STOP PILOT FOR "B"	酒杯(B)	1
20	ML80531	MOTOR TOP COVER	碳刷座半成品	1	42	GP30361	STELL BALLS(5mm)	跳脫鋼珠(5mm)	2
21	ME21481	BALL BEARING	軸承	2	43	GP30351	STELL BALLS(4mm)	酒杯鋼珠(4mm)	2
22	MH81581-1	ARMATURE-8300L,8400L,8500L	電樞-8300L,8400L,8500L	1	44	GD91408	SHAFT FOR HEX 5.0mm	傳動軸A 頭用	1
	MH81581-2	ARMATURE-8400LF	電樞-8400LF	1		GD91404	SHAFT FOR HEX 6.35mm	傳動軸B 頭用	1
23	MJ91621PF	MOTOR YOKE ASSEMBLY	鐵圈連磁鐵	1	45	GP21291A	BIT PILOT FOR HEX 5.0mm(3mm)	起子頭帽鋼珠A頭用(3mm)	2
24	MB91641A	MOTOR END COVER	馬達前蓋	1		GP21291B	BIT PILOT FOR HEX 6.35mm(2.5mm)	起子頭帽鋼珠B頭用(2.5mm)	2
25	MA91611B	ASSEMBLING SPRING	馬達固定片	2	46	GF90324	WARING PLATE	扭力推盤	1
26	MK21111	FAN FOR "8300L"	風扇(8300L)	1	47	GE80351-2	WARING SPRING FOR "8300L"	扭力彈簧(8300L)	1
	MK91091	FAN FOR "8400L"	風扇(8400L)	1		GE80351-4	WARING SPRING FOR "8400,8400LF"	扭力彈簧(8400,8400LF)	1
	MK92091	FAN FOR "8500L"	風扇(8500L)	1		GE80351-6	WARING SPRING FOR "8500L"	扭力彈簧(8500L)	1
	MK21112	FAN FOR "8400FL"	風扇(8400LF)	1	48	GY21321	WARING SPRING BASE	止推盤	1
27	CK28031-1	TRIGGER SPRING	壓板彈簧	1	49	GK20231B	"C"RING	傳動軸固定C環	1
28	GZ81081LA	CLUTCH ASSEMBLY FOR "8300LA"	離合器整組(8300LA)	1	50	GB21331	CLUTCH CASE	下離合器筒半成品	1
	GZ81081LB	CLUTCH ASSEMBLY FOR "8300LB"	離合器整組(8300LB)	1	51	GO21341	BIT SPRING	起子頭帽彈簧	1
	GZ81082LA	CLUTCH ASSEMBLY FOR "8400LA"	離合器整組(8400LA)	1	52	GJ21351	BIT SLEEVE	起子頭帽	1
	GZ81082LB	CLUTCH ASSEMBLY FOR "8400LB"	離合器整組(8400LB)	1	53	GQ21361	"C"RING	起子頭帽C環	1
	GZ81083LA	CLUTCH ASSEMBLY FOR "8500LA"	離合器整組(8500LA)	1	54	GL21371	TORQUE ADJUSTING PINS	扭力調整棒	4
	GZ81083LB	CLUTCH ASSEMBLY FOR "8500LB"	離合器整組(8500LB)	1	55	GM21381	TORQUE ADJUSTING RING	扭力調整環	1
	GZ81082LAF	CLUTCH ASSEMBLY FOR "8400LFA"	離合器整組(8400LFA)	1	56	GS21391	"C"RING	扭力環C環	1
	GZ81082LBF	CLUTCH ASSEMBLY FOR "8400LFB"	離合器整組(8400LFB)	1	57	CD91031-1	COUPLER	前鎖環	1
29	MI31221-1	PILOT ROD	開關引導棒	1		CD91031-4	COUPLER (ESD)	前鎖環 (ESD)	1
30	GK91211	"C"RING	齒輪固定C環	1	58	CH30681-1	GROUNDING MEANS	接地線	1
31	GI28444-1	IRON WASHER FOR 8300L	齒輪固定片 8300L	1	59	CH20102-10	WASHER	墊片	1
	GI28444	IRON WASHER FOR 8400L,8500L,8400LF	齒輪固定片 8400L,8500L,8400LF	1	60	CH20102-11	SCREW	螺絲	1
32	GH20241	IDLE GEAR FOR "8300L"	游星齒輪(8300L)	3	61	GN30442	MAIN BEARING	離合器主軸承	1



Model:
SKD-8300LF

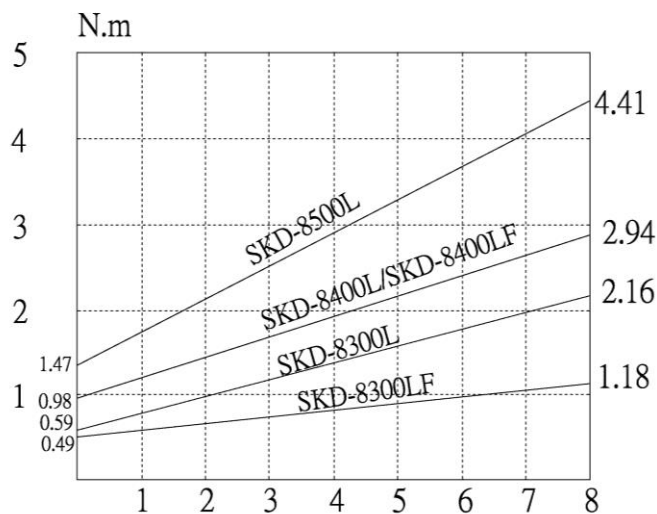
CUSTOMER	DWG NAME	PRODUCTION NO.	
ITEM NO:	DWG NO:		
TITLE:	MATERIAL	SHRINK	THIRD ANGLE PROJECTION
	DES. BY	DATE	UNIT
	CHKD. BY	DATE	SCALE
	APPD. BY	DATE	SHEET NO. OF SHEETS

NO	PARTS NO	PARTS NAME-E	PARTS NAME-C	Q'ty	NO	PARTS NO	PARTS NAME-E	PARTS NAME-C	Q'ty
1	AA50001	CORD ASSEMBLY	電源線	1	30	GK91211	"C"RING	齒輪固定C環	1
2	PZ50160	CONNECTOR	六芯插座	1	31	GI28444-1	IRON WASHER	齒輪固定片	1
3	CJ20011	SUSPENSION RING	起子吊環	1	32	G21301	WASHER,HIGH SPEED	快速齒輪墊圈	1
4	CC70012	TRIGGER ASSEMBLY	手按開關半成品	1	33	GH21221-1	IDLE GEAR	游星齒輪	3
	CC70013	TRIGGER ASSEMBLY (ESD)	手按開關半成品(ESD)	1	34	GG21231-1	GEAR SEAT	下齒盤	1
5	CB91101	HOUSING-UNDERSIDE	外殼下蓋	1	35	GA91281	GEAR CASE	上離合器筒	1
	CB91106	HOUSING-UNDERSIDE (ESD)	外殼下蓋 (ESD)	1	36	GN21251	MAIN BEARING	離合器主軸承	2
6	CA92101	HOUSING-UPSIDE	外殼上蓋	1	37	GW21532	IRON RING	鐵墊圈	1
	CA92106	HOUSING-UPSIDE (ESD)	外殼上蓋 (ESD)	1	38	GC90302	CAM	上離合器頭	1
7	HB91061	SHUT OFF SWITCH	剎車開關	1	39	GU30370	STOP PILOT FOR "A"	酒杯(A)	1
8	CE90101-1	SWITCH BASE	三合一開關架	1		GU30371	STOP PILOT FOR "B"	酒杯(B)	1
9	HB50061	START SWITCH	啟動開關	1	40	GP30361	STELL BALLS(5mm)	跳脫鋼珠(5mm)	2
10	CH90121	SCREW	螺絲	1	41	GP30351	STELL BALLS(4mm)	酒杯鋼珠(4mm)	2
11	CH90131	SCREW	螺絲	1	42	GD91408	SHAFT FOR HEX 5.0mm	傳動軸A 頭用	1
12	CH90151-1	SCREW	螺絲	2		GD91404	SHAFT FOR HEX 6.35mm	傳動軸B 頭用	1
13	HA91041	CHANGEOVER SWITCH	正反開關	1	43	GP21291A	BIT PILOT FOR HEX 5.0mm(3mm)	起子頭帽鋼珠A頭用(3mm)	2
14	CH20102	SCREW	螺絲	3		GP21291B	BIT PILOT FOR HEX 6.35mm(2.5mm)	起子頭帽鋼珠B頭用(2.5mm)	2
15	MO80081-1	MOTOR ASSEMBLY	馬達整組	1	44	GF90324	WARING PLATE	扭力推盤	1
16	MI31611	PILOT ROD	開關引導棒	1	45	GE80351-7	WARING SPRING	扭力彈簧	1
17	EB33610-2	CERAMICS CAPACITOR	陶瓷電容	1	46	GY21321	WARING SPRING BASE	止推盤	1
18	MD91531	BRUSH CAP	碳刷蓋	2	47	GK20231B	"C"RING	傳動軸固定C環	1
19	MC71411-1	CARBON	碳刷	2	48	GB21331	CLUTCH CASE	下離合器筒半成品	1
20	ML80531	MOTOR TOP COVER	碳刷座半成品	1	49	GO21341	BIT SPRING	起子頭帽彈簧	1
21	ME21481	BALL BEARING	軸承	2	50	GJ21351	BIT SLEEVE	起子頭帽	1
22	MH81581-1	ARMATURE	電樞	1	51	GQ21361	"C"RING	起子頭帽C環	1
23	MJ91621PF	MOTOR YOKE ASSEMBLY	鐵圈連磁鐵	1	52	GL21371	TORQUE ADJUSTING PINS	扭力調整棒	4
24	MB91641A	MOTOR END COVER	馬達前蓋	1	53	GM21381	TORQUE ADJUSTING RING	扭力調整環	1
25	MA91611B	ASSEMBLING SPRING	馬達固定片	2	54	GS21391	"C"RING	扭力環C環	1
26	MK21111PF	FAN	風扇	1	55	CD91031-1	COUPLER	前鎖環	1
27	CK28031-1	TRIGGER SPRING	壓板彈簧	1		CD91031-4	COUPLER (ESD)	前鎖環 (ESD)	1
28	GZ81081LAF	CLUTCH ASSEMBLY FOR "8300LFA"	離合器整組(8300LFA)	1	56	CH30681-1	GROUNDING MEANS	接地線	1
	GZ81081LBF	CLUTCH ASSEMBLY FOR "8300LFB"	離合器整組(8300LFB)	1	57	CH20102-10	WASHER	墊片	1
29	MI31221-1	PILOT ROD	開關引導棒	1	58	CH20102-11	SCREW	螺絲	1

Torque Adjustment Operation

To adjust the torque on these screwdrivers. Proceed as follows :

1. Determine the torque output of the tool by checking a tightened Fastener with a torque wrench.
2. Increase or decrease the torque by rotating the Spring Adjusting Ring. Rotating the Ring clockwise to a higher number on the torque Scale increase torque output while rotating the Ring counterclockwise to a lower number decreases the torque output.
3. Check the adjustment with a torque wrench. A number of factors will affect torque output from one job to another. Final torque adjustment should be made at the job through a of series of gradual increase. Always start below the desired torque and work upward.
4. Adjust the bit torque by changing the driving in length of the adjust ring at the end.
5. The relationship between torque scale and bit torque is as shown Ring, in the torque diagram. The figures of torque scale do not indicate bit torque values. However, the clamping torque of screw itself is different form type, size, material of the screw and the material of its mating part. Use it as standard to obtain an appropriate clamping torque.
6. The (Return torque method) in which once-clamped screw is returned with torque wrench or the like is available as one of torque control methods however, note that the measured values by the return torque method generally appear in 10%~30% lower than the actually clamping torque.
7. The torque checker measures the torque of screwdriver. The clamping torque of screw itself is different from the clamped conditions. Understand the correlation between clamping torque values and the torque checker values perform the torque control properly.


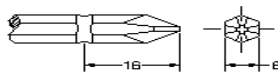


CAUTION

1. Also in reverse rotation, the clutch is turned off in such manner as in normal rotation, stopping the motor running. Accordingly, when the screw tightened at a large torque, set it to a higher torque scale.
2. The number from zero to eight on the Torque Scale are reference number only and not an indication of actual torque output.
3. The power supplier will generate low power when the button of the power controller is switched to "LO." Also, the electric screwdriver's torque output setting value should be adjusted to middle torsion value accordingly.



Specifications

MODEL	SKD-8300P	SKD-8400P	SKD-8500P	SKD-8300PF	SKD-8400PF	
Input voltage (DC)	DC 24V / 32V					
Rated input	55W					
Bit torque	(kgf.cm)	6~22	10~30	15~45	5~12	10~30
	(Lbf.in)	5.22~19.12	8.67~26.02	13.0~39.02	4.34~10.44	8.67~26.02
	(N.m)	0.59~2.16	0.98~2.94	1.47~4.41	0.49~1.18	0.98~2.94
Torque Accuracy (%)	±3%					
Torque Adjustment	Stepless					
Rev speed at no load (R.p.m)	HI	1000	750	530	2000	1000
	LO	700	520	350	-	700
Metal assembly screw (mm)	Machine screw	2.6~4.0	3.0~5.0	4.0~6.0	2.0~3.0	3.0~5.0
	Tapping screw	2.0~3.5	2.6~4.0	3.0~5.0	2.0~2.6	2.6~4.0
Weight (g)	700					
Length (mm)	269					
Model of Torque Fixing Ring	KC-1 · KC-1S					
Power controller	SKP-32HL					
Model of Suspension Rack	KH-3 · (KC & KH-1)					
Bit Type						
	HEX 5mm,		HEX 6.35mm			

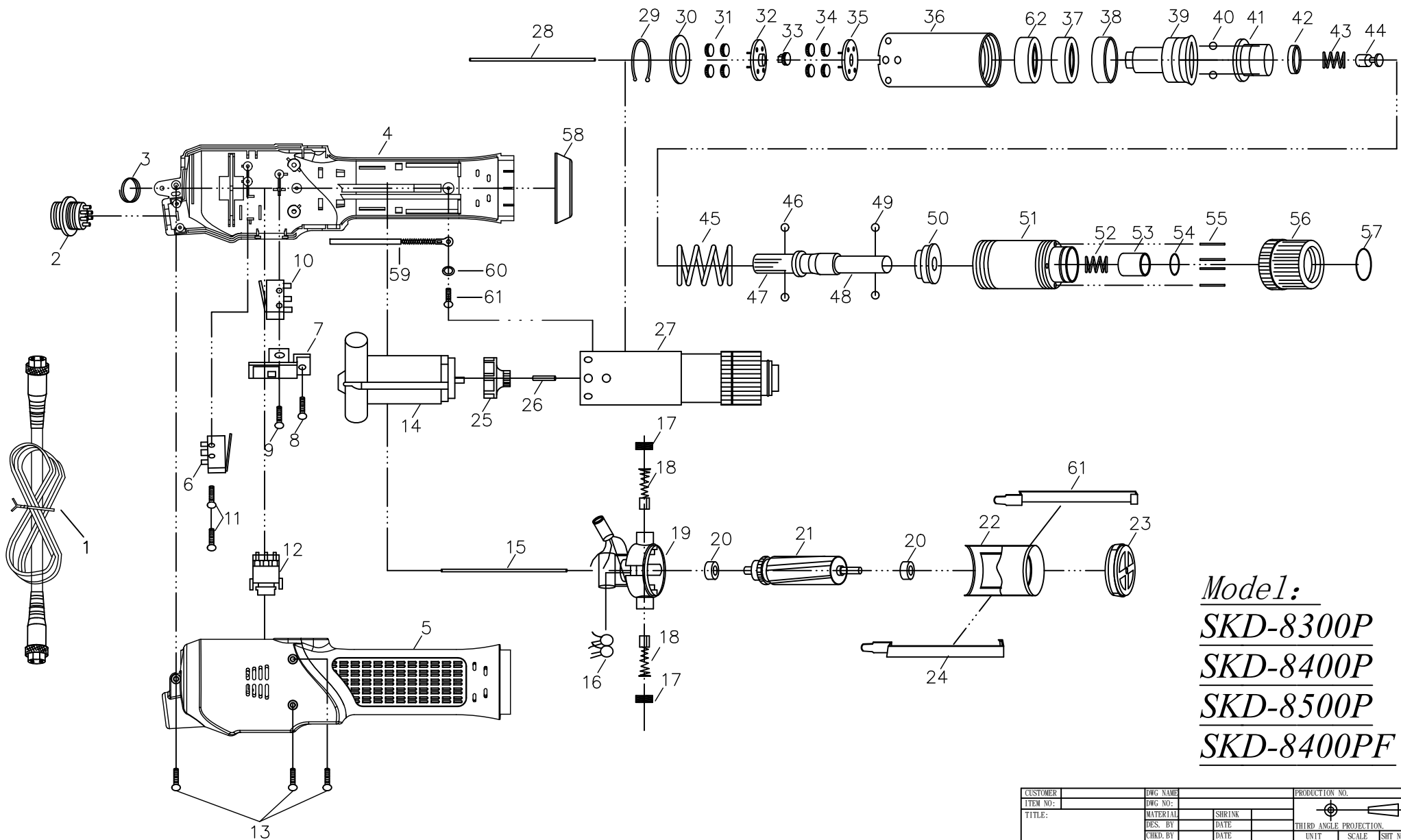
1N.m=10.2Kgf.cm 1N.m=8.85Lbf.in

Accessories

1. BIT Type :
- No. 00 . . . Bit use in dia 1.3~1.8mm screw
 - No. 0 Bit use in dia 1.8~2.0mm screw
 - No. 1 Bit use in dia 2.0~2.6mm screw
 - No. 2 Bit use in dia 3.0~4.0mm screw

SKD-8300P.PF	with BIT	1# & 2#	1 Pce. Each
SKD-8400P.F	with BIT	2#	2 Pce.
SKD-8500P	with BIT	2#	2 Pce.

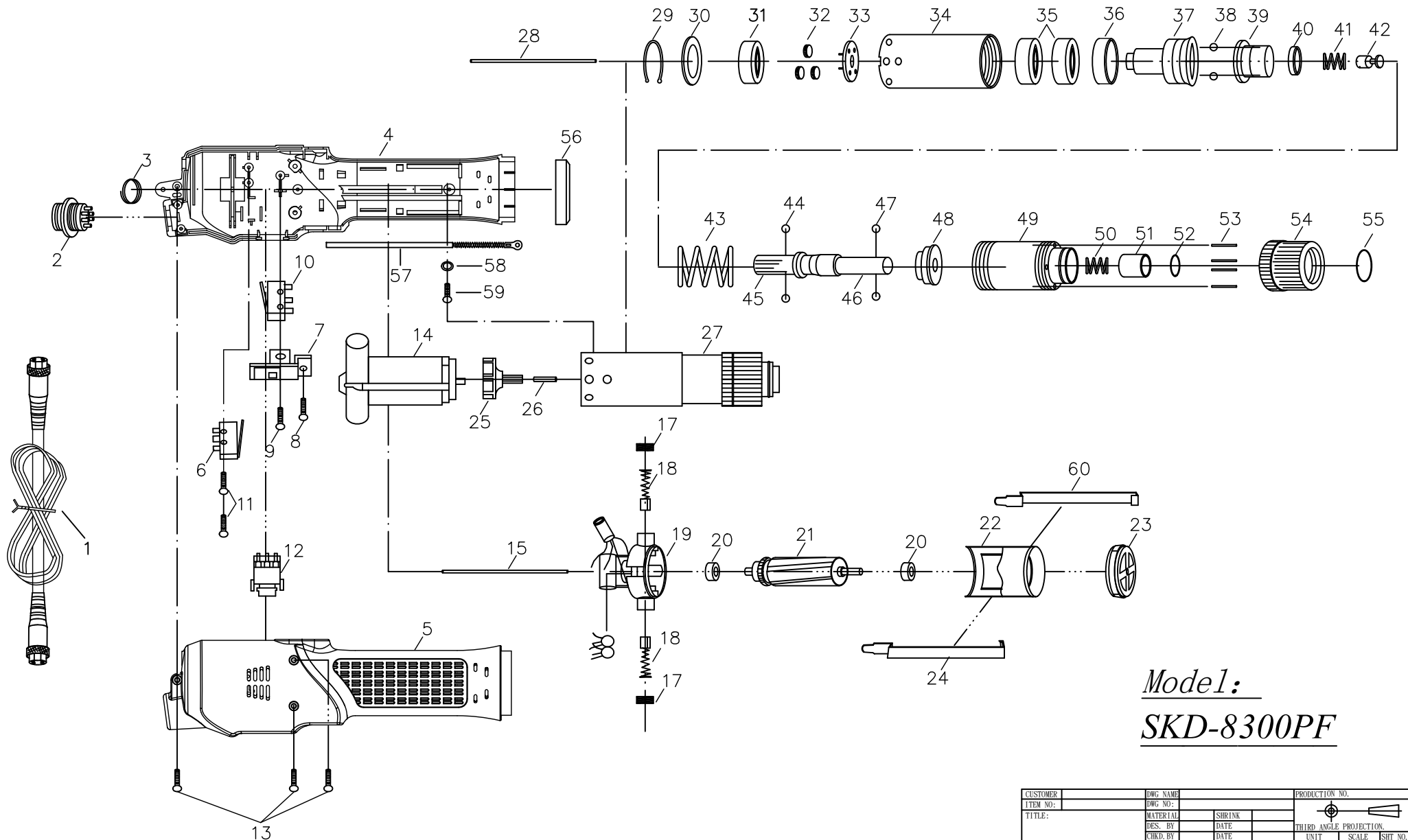
2.Suspension rack and Torque fixing ring acceptable for use with the tool are available from KILEWS catalogue.



Model:
SKD-8300P
SKD-8400P
SKD-8500P
SKD-8400PF

CUSTOMER	DWG NAME			PRODUCTION NO.		
ITEM NO:	DWG NO:					
TITLE:	MATERIAL	SHRINK		THIRD ANGLE PROJECTION.		
	DES. BY	DATE		UNIT	SCALE	SHT NO.
	CHKD. BY	DATE				OF SHTS.
	APPD. BY	DATE				

NO	PARTS NO	PARTS NAME-E	PARTS NAME-C	Q'ty	NO	PARTS NO	PARTS NAME-E	PARTS NAME-C	Q'ty
1	AA50001	CORD ASSEMBLY	電源線	1		GG20271	GEAR SEAT FOR "8400PF"	上齒盤(8400PF)	1
2	PZ50160	CONNECTOR	六芯插座	1		GG91242-1	GEAR SEAT FOR "8400P"	上齒盤含中心齒(8400P)	1
3	CJ20011	SUSPENSION RING	起子吊環	1		GG92241-1	GEAR SEAT FOR "8500P"	上齒盤含中心齒(8500P)	1
4	CB91023	HOUSING-UNDERSIDE	外殼下蓋	1	33	GH20241	IDLE GEAR FOR "8300P"	游星齒輪(8300P)	3
	CB91024	HOUSING-UNDERSIDE (ESD)	外殼下蓋(ESD)	1		GH91232-1	IDLE GEAR FOR "8400P"	游星齒輪(8400P)	3
5	CA91183	HOUSING-UPSIDE	外殼上蓋	1		GH92231-1	IDLE GEAR FOR "8500P"	游星齒輪(8500P)	4
	CA91184	HOUSING-UPSIDE (ESD)	外殼上蓋(ESD)	1		GH21221-2	IDLE GEAR FOR "8400PF"	游星齒輪(8400PF)	4
6	H10201	SHUT OFF SWITCH	剎車開關	1	34	G20102	CENTRAL GEAR FORN "8300P" ONLY	中心齒(8300P)	1
7	CE90101-1	SWITCH BASE	三合一開關架	1		G20104	CENTRAL GEAR FORN "8400PF" ONLY	中心齒(8400PF)	1
8	CH90121	SCREW	螺絲	1	35	GG21231	GEAR SEAT FOR "8300P"	下齒盤(8300P)	1
9	CH90131	SCREW	螺絲	1		GG91272-1	GEAR SEAT FOR "8400P"	下齒盤(8400P)	1
10	H10201	START SWITCH	啟動開關	1		GG92271-1	GEAR SEAT FOR "8500P"	下齒盤(8500P)	1
11	CH90151-1	SCREW	螺絲	2		GG20271	GEAR SEAT FOR "8400PF"	下齒盤(8400PF)	1
12	HA91041	CHANGEOVER SWITCH (8300P)	正反開關(8300P)	1	36	GA91281	GEAR CASE FOR "8300P"	上離合器筒(8300P)	1
	HA91042	CHANGEOVER SWITCH (8400P,8400PF)	正反開關(8400P,8400PF)	1		GA91282	GEAR CASE FOR "8400P、8500P"	上離合器筒(8400P、8500P)	1
	HA92051	CHANGEOVER SWITCH (8500P)	正反開關(8500P)	1		GA91282-1	GEAR CASE FOR "8400PF"	上離合器筒(8400PF)	1
13	CH20102	SCREW	螺絲	3	37	GN21251	MAIN BEARING	離合器主軸承	1
14	MO80081-1	MOTOR ASSEMBLY-8300P,8400P,8500P	馬達整組-8300P,8400P,8500P	1	38	GW21532	IRON RING	鐵墊圈	1
	MO80081-7	MOTOR ASSEMBLY-8400PF	馬達整組-8400PF	1	39	GX90302	SHAFT GUIDE	上離合器頭	1
15	MI90481	PILOT ROD	開關引導棒	1	40	GP30361	STELL BALLS	跳脫鋼珠	2
16	EB33610-2	CERAMICS CAPACITOR	陶瓷電容	1	41	GF90322	WARING PLATE	扭力推盤	1
17	MD91531	BRUSH CAP	碳刷蓋	2	42	GV90331	INNER SPRING CAP	下壓式內彈簧蓋	1
18	MC71411-1	CARBON	碳刷	2	43	GO90341	INNER SPRING	下壓式內彈簧	1
19	ML80531	MOTOR TOP COVER	碳刷座半成品	1	44	GU30370	STOP PILOT	酒杯	1
20	ME21481	BALL BEARING	軸承	2	45	GE80361-2	WARING SPRING FOR "8300P"	扭力彈簧(8300P)	1
21	MH81581-1	ARMATURE-8300P,8400P,8500P	電樞-8300P,8400P,8500P	1		GE80361-4	WARING SPRING FOR "8400P,8400PF"	扭力彈簧(8400P,8400PF)	1
	MH81581-2	ARMATURE-8400PF	電樞-8400PF	1		GE80361-6	WARING SPRING FOR "8500P"	扭力彈簧(8500P)	1
22	MJ91621PF	MOTOR YOKE ASSEMBLY	鐵圈連磁鐵	1	46	GP30351	STELL BALLS	酒杯鋼珠	2
23	MB91641A	MOTOR END COVER	馬達前蓋	1	47	GD91402	SHAFT -8300	六角軸(8300P)	1
24	MA91611B	ASSEMBLING SPRING	馬達固定片	2		GD91402-1	SHAFT -8400P,8400PF	六角軸(8400P,8400PF)	1
25	MK21111	FAN FOR "8300P"	風扇(8300P)	1		GD91402A	SHAFT FOR -8500PA	傳動軸(8500PA)	1
	MK91091	FAN FOR "8400P"	風扇(8400P)	1		GD91402B	SHAFT FOR -8500PB	傳動軸(8500PB)	1
	MK92091	FAN FOR "8500P"	風扇(8500P)	1	48	GT91401C	BIT HOLDER FOR "B"TYPE(8300P)	起子頭 6.35mm(8300P)	1
	MK21112	FAN FOR "8400PF"	風扇(8400PF)	1		GT91401A	BIT HOLDER FOR "A"TYPE(8300P)	起子頭 5.0mm(8300P)	1
26	MG91081	PILOT ROD	陶瓷棒	1		GT91401C-1	BIT HOLDER FOR "B"TYPE(8400P,8400PF)	起子頭 6.35mm(8400P,8400PF)	1
27	GZ81081PA	CLUTCH ASSEMBLY FOR "8300PA"	離合器整組(8300PA)	1		GT91401A-1	BIT HOLDER FOR "A"TYPE(8400P,8400PF)	起子頭 5.0mm(8400P,8400PF)	1
	GZ81081PB	CLUTCH ASSEMBLY FOR "8300PB"	離合器整組(8300PB)	1	49	GP21291A	BIT PILOT FOR HEX 5.0mm	起子頭帽鋼珠A頭用	2
	GZ81082PA	CLUTCH ASSEMBLY FOR "8400PA"	離合器整組(8400PA)	1		GP21291B	BIT PILOT FOR HEX 6.35mm	起子頭帽鋼珠B頭用	2
	GZ81082PB	CLUTCH ASSEMBLY FOR "8400PB"	離合器整組(8400PB)	1	50	GY21321	WARING SPRING BASE	止推盤	1
	GZ81083PA	CLUTCH ASSEMBLY FOR "8500PA"	離合器整組(8500PA)	1	51	GB21331	CLUTCH CASE	下離合器筒	1
	GZ81083PB	CLUTCH ASSEMBLY FOR "8500PB"	離合器整組(8500PB)	1	52	GO21341	BIT SPRING	起子頭帽彈簧	1
	GZ81082PAF	CLUTCH ASSEMBLY FOR "8400PAF"	離合器整組(8400PAF)	1	53	GJ21351	BIT SLEEVE	起子頭帽	1
	GZ81082PBF	CLUTCH ASSEMBLY FOR "8400PBF"	離合器整組(8400PBF)	1	54	GQ21361	"C"RING	起子頭帽C環	1
28	MI90201	PILOT ROD	開關引導棒	1	55	GL21371	TORQUE ADJUSTING PINS	扭力調整棒	4
29	GK91211	"C"RING	齒輪固定C環	1	56	GM21381	TORQUE ADJUSTING RING	扭力調整環	1
30	GI28444-1	IRON WASHER FOR 8300P	齒輪固定片 8300P	1	57	GS21391	"C"RING	扭力環C環	1
	GI28444	IRON WASHER FOR 8400P,8500P,8400PF	齒輪固定片 8400P,8500P,8400PF	1	58	CD91031-1	COUPLER	前鎖環	1
31	GH20241	IDLE GEAR FOR "8300P"	游星齒輪(8300P)	3		CD91031-4	COUPLER (ESD)	前鎖環 (ESD)	1
	GH91232	IDLE GEAR FOR "8400P"	游星齒輪(8400P)	3	59	CH30681-1	GROUNDING MEANS	接地線	1
	GH92231	IDLE GEAR FOR "8500P"	游星齒輪(8500P)	4	60	CH20102-10	WASHER	墊片	1
	GH21221-2	IDLE GEAR FOR "8400PF"	游星齒輪(8400PF)	4	61	CH20102-11	SCREW	螺絲	1
32	GG21231	GEAR SEAT FOR "8300P"	上齒盤(8300P)	1	62	GN30442	MAIN BEARING	離合器主軸承	1



Model:
SKD-8300PF

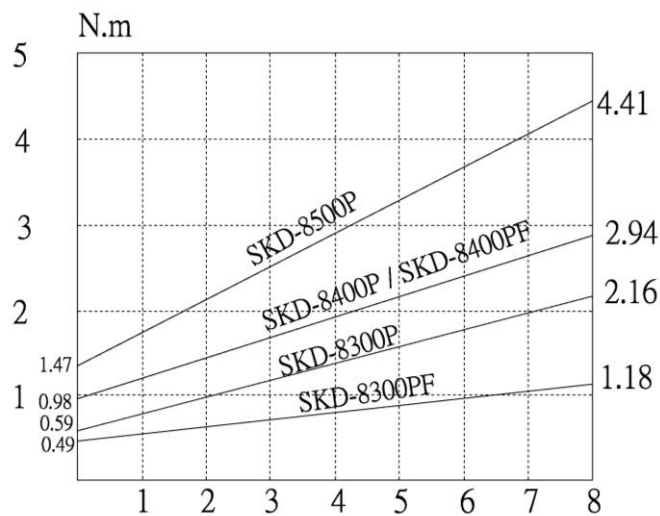
CUSTOMER	DRG. NAME	PRODUCTION NO.
ITEM NO.	DRG. NO.	
TITLE:	MATERIAL	SHRINK
	DES. BY	DATE
	CHKD. BY	DATE
	APPD. BY	DATE
		THIRD ANGLE PROJECTION.
		UNIT
		SCALE
		SHT NO.
		OF SHTS.

NO	PARTS NO	PARTS NAME-E	PARTS NAME-C	Q'ty	NO	PARTS NO	PARTS NAME-E	PARTS NAME-C	Q'ty
1	AA50001	CORD ASSEMBLY	電源線	1	31	G21301	WASHER,HIGH SPEED	快速齒輪墊圈	1
2	PZ50160	CONNECTOR	六芯插座	1	32	GH21221-1	IDLE GEAR	游星齒輪	3
3	CJ20011	SUSPENSION RING	起子吊環	1	33	GG21231-1	GEAR SEAT	下齒盤	1
4	CB91023	HOUSING-UNDERSIDE	外殼下蓋	1	34	GA91281	GEAR CASE	上離合器筒	1
	CB91024	HOUSING-UNDERSIDE (ESD)	外殼下蓋(ESD)	1	35	GN21251	MAIN BEARING	離合器主軸承	2
5	CA91183	HOUSING-UPSIDE	外殼上蓋	1	36	GW21532	IRON RING	鐵墊圈	1
	CA91184	HOUSING-UPSIDE (ESD)	外殼上蓋(ESD)	1	37	GX90302	SHAFT GUIDE	上離合器頭	1
6	H10201	SHUT OFF SWITCH	剎車開關	1	38	GP30361	STELL BALLS	跳脫鋼珠	2
7	CE90101-1	SWITCH BASE	三合一開關架	1	39	GF90322	WARING PLATE	扭力推盤	1
8	CH90121	SCREW	螺絲	1	40	GV90331	INNER SPRING CAP	下壓式內彈簧蓋	1
9	CH90131	SCREW	螺絲	1	41	GO90341	INNER SPRING	下壓式內彈簧	1
10	H10201	START SWITCH	啟動開關	1	42	GU30370	STOP PILOT	酒杯	1
11	CH90151-1	SCREW	螺絲	2	43	GE80361-7	WARING SPRING	扭力彈簧	1
12	HA91041	CHANGEOVER SWITCH	正反開關	1	44	GP30351	STELL BALLS	酒杯鋼珠	2
13	CH20102	SCREW	螺絲	3	45	GD91402	SHAFT	六角軸	1
14	MO80081-1	MOTOR ASSEMBLY	馬達整組	1	46	GT91401C	BIT HOLDER FOR "B"TYPE	起子頭 6.35mm	1
15	MI90481	PILOT ROD	開關引導棒	1		GT91401A	BIT HOLDER FOR "A"TYPE	起子頭 5.0mm	1
16	EB33610-2	CERAMICS CAPACITOR	陶瓷電容	1	47	GP21291A	BIT PILOT FOR HEX 5.0mm	起子頭帽鋼珠A頭用	2
17	MD91531	BRUSH CAP	碳刷蓋	2		GP21291B	BIT PILOT FOR HEX 6.35mm	起子頭帽鋼珠B頭用	2
18	MC71411-1	CARBON	碳刷	2	48	GY21321	WARING SPRING BASE	止推盤	1
19	ML80531	MOTOR TOP COVER	碳刷座半成品	1	49	GB21331	CLUTCH CASE	下離合器筒	1
20	ME21481	BALL BEARING	軸承	2	50	GO21341	BIT SPRING	起子頭帽彈簧	1
21	MH81581-1	ARMATURE	電樞	1	51	GJ21351	BIT SLEEVE	起子頭帽	1
22	MJ91621PF	MOTOR YOKE ASSEMBLY	鐵圈連磁鐵	1	52	GQ21361	"C"RING	起子頭帽C環	1
23	MB91641A	MOTOR END COVER	馬達前蓋	1	53	GL21371	TORQUE ADJUSTING PINS	扭力調整棒	4
24	MA91611B	ASSEMBLING SPRING	馬達固定片	2	54	GM21381	TORQUE ADJUSTING RING	扭力調整環	1
25	MK21111PF	FAN	風扇	1	55	GS21391	"C"RING	扭力環C環	1
26	MG30081-1	PILOT ROD	陶瓷棒	1	56	CD91031-1	COUPLER	前鎖環	1
27	GZ81081PAF	CLUTCH ASSEMBLY FOR "8300PFA"	離合器整組(8300PFA)	1		CD91031-4	COUPLER (ESD)	前鎖環 (ESD)	1
	GZ81081PBF	CLUTCH ASSEMBLY FOR "8300PFB"	離合器整組(8300PFB)	1	57	CH30681-1	GROUNDING MEANS	接地線	1
28	MI90201	PILOT ROD	開關引導棒	1	58	CH20102-10	WASHER	墊片	1
29	GK91211	"C"RING	齒輪固定C環	1	59	CH20102-11	SCREW	螺絲	1
30	GI28444-1	IRON WASHER	齒輪固定片	1					

Torque Adjustment Operation

To adjust the torque on these screwdrivers. Proceed as follows:

1. Determine the torque output of the tool by checking a tightened Fastener with a torque wrench.
2. Increase or decrease the torque by rotating the Spring Adjusting Ring. Rotating the Ring clockwise to a higher number on the torque Scale increase torque output while rotating the Ring counterclockwise to a lower number decreases the torque output.
3. Check the adjustment with a torque wrench. A number of factors will affect torque output from one job to another. Final torque adjustment should be made at the job through a of series of gradual increase. Always start below the desired torque and work upward.
4. Adjust the bit torque by changing the driving in length of the adjust ring at the end.
5. The relationship between torque scale and bit torque is as shown Ring, in the torque diagram. The figures of torque scale do not indicate bit torque values. However, the clamping torque of screw itself is different form type, size, material of the screw and the material of its mating part. Use it as standard to obtain an appropriate clamping torque.
6. The (Return torque method) in which once-clamped screw is returned with torque wrench or the like is available as one of torque control methods however, note that the measured values by the return torque method generally appear in 10%~30% lower than the actually clamping torque.
7. The torque checker measures the torque of screwdriver. The clamping torque of screw itself is different from the clamped conditions. Understand the correlation between clamping torque values and the torque checker values perform the torque control properly.



CAUTION

1. Also in reverse rotation, the clutch is turned off in such manner as in normal rotation, stopping the motor running. Accordingly, when the screw tightened at a large torque, set it to a higher torque scale.
2. The number from zero to eight on the Torque Scale are reference number only and not an indication of actual torque output.
3. The power supplier will generate low power when the button of the power controller is switched to "LO." Also, the electric screwdriver's torque output setting value should be adjusted to middle torsion value accordingly.

