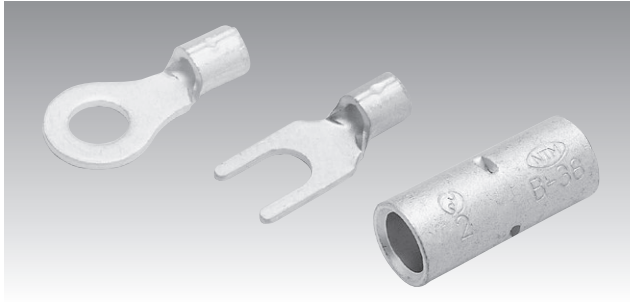


# NON-INSULATED TERMINALS & SLEEVES

A



## SPECIFICATIONS

- **MATERIAL** : Oxygen free copper strip/tube. (electro-tin-plating)
- **RATED CURRENT** : Please see amperage rating table for insulated wires. (Page 148)

## STANDARDS

- Japanese Industrial Standards, JIS C2805 and JIS C2806.
- UL 486A-486B (File No. E44245)
- CSA C22.2 (File No. LR-28418)



## FOR SAFETY USE

Please observe the following points to prevent over-heat and possible fire.

- Copper wire only.
- Use our recommended tools.
- Use with specified wire range.

(NOTE)

APPLICABLE WIRE

- Wire range and performance ratings comply with JIS standard wire (IV, KIV, VSF).
- Inquire when solid wire is used for the 14 mm<sup>φ</sup> or above terminals.

UL / CSA

To have UL/CSA listed or certified, use proper Nichifu crimp tool. To find correct tool, see our tool selection, page 138~142.

WIRE STRIP LENGTH

Strip length should be approx. 2mm longer than barrel length. (conductor should come out 1mm from both ends)

## STRUCTURE OF OUR PART NUMBER

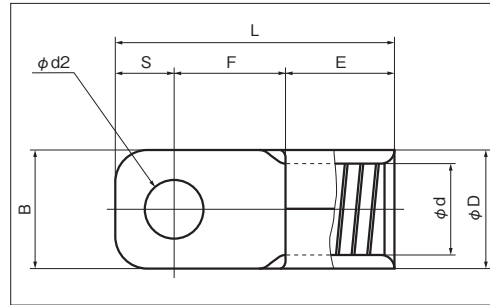
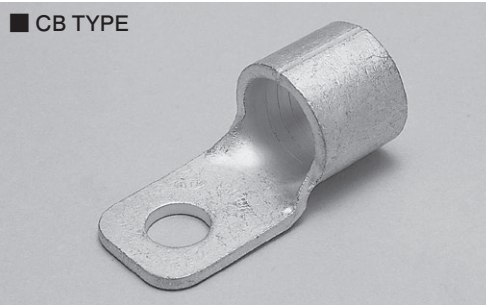
R 1.25 - 3

Shape of tongue	Nominal size	Stud size(mm)
R : RING	1.25 → 1.25mm <sup>2</sup>	
RD : RING,DOUBLE STUD	2 → 2mm <sup>2</sup>	
CB : SQUARE RING	3.5 → 3.5mm <sup>2</sup> etc	
FT : FLAG RING		

1.25 Y - 3

Nominal size	Shape of tongue	Stud size(mm)
1.25 → 1.25mm <sup>2</sup>	Y : SPADE	
2 → 2mm <sup>2</sup>	LY : LOCKING SPADE	
3.5 → 3.5mm <sup>2</sup> etc		

# SQUARE RING TERMINALS (CB TYPE)



RoHS10  
See page 2

A

PART NUMBER	DIMENSIONS mm								WIRE RANGE		TOOL No.		STD QTY/BOX		
	φd2	B	L	S	F	E	φD	φd	STRANDED mm <sup>2</sup>	AWGor MCM	HAND TOOL No.	TOOL BODY No.		HEAD No.	
<b>CB 22-5S</b> ○	5.3	12.5	31.0	5.5	13.5	12.0	11.6	7.7	16.78	4	NOP 60 NOM60 NOP 150HA NOM 150		100		
<b>CB 22-6S</b> ○	6.4			6.4	12.6				26.66		NA 20	N20 22			
<b>CB 22-8S</b> ○	8.2														
<b>CB 38-5S</b> ○	5.3	13.5	36.8	7.5	16.3	13.0	13.4	9.4	26.66	2	NOP 60 NOM 60 NOP 150HA NOM 150		100		
<b>CB 38-6N</b> ○	6.4	13.5	36.8	7.5					42.42		NA 20	N20 38			
<b>CB 38-6S</b> ○	6.4														
<b>CB 38-8N</b>	8.4	12.5	34.8	7.4	14.4										
<b>CB 60-6N</b>	6.4	16.0	46.5	8.0	20.0	18.5	15.6	11.4	42.42	1/0	NOP 60 NOM 60 NOP 150HA NOM 150		100		
<b>CB 60-6S</b> ○			49.5	11.0					60.57		NA 20	N20 60			
<b>CB 60-8</b> ▲○			8.4	46.5					8.0						
<b>CB 60-8S</b> ○	8.4														
<b>CB 60-10S</b> ○	10.5		49.5	11.0							NOM 2500A NOM 3000	NOH 300K			
<b>CB 70-6</b>	6.4	20.5	51.0	12.0	20.0	19.0	17.8	13.5	60.57	2/0	NOP 150HA NOM 150		25		
<b>CB 70-8</b>	8.4								76.28		NOP 700 NOM 2500A NOM 3000	NOH 300K			
<b>CB 70-10</b>	10.5														
<b>CB 70-12</b>	13.0														
<b>CB 80-8</b>	8.4	22.0	50.0	11.0	20.0	19.0	19.6	14.5	76.28	3/0	NOP 150HA NOM 150		50		
<b>CB 80-8S</b>			49.0	10.0					96.3		NOP 700 NOM 2500A NOM 3000	NOH 300K			
<b>CB 80-10</b>			10.5	50.0					11.0						
<b>CB 80-10S</b>			10.5												
<b>CB 80-12S</b>	13.0		49.0	10.0											
<b>CB 100-8</b> ▲	8.4	22.0	52.0	11.0	22.0	19.0	22.5	16.4	96.3	4/0	NOP 150HA NOM 150		50		
<b>CB 100-8S</b>			53.0	12.0					117.2		NOP 700 NOM 2500A NOM 3000	NOH 300K			
<b>CB 100-10</b> ▲	10.5		52.0	11.0											
<b>CB 100-10S</b>	10.5														
<b>CB 100-12S</b>	13.0		53.0	12.0											
<b>CB 150-8</b> ▲	8.4	22.0	60.3	11.0	22.3	27.0	26.6	19.5	117.2	250-300 MCM	NOP 150HA NOM 150		20		
<b>CB 150-8S</b>			61.3	12.0					152.05		NOP 700 NOM 2500A NOM 3000	NOH 300K			
<b>CB 150-10S</b>	10.5		25.0	61.8					12.5						
<b>CB 150-10</b> ▲	10.5														
<b>CB 150-12S</b>	13.0	22.0	61.3	12.0											
<b>CB 200-10S</b>	10.5	36.0	72.0	19.0	22.3	30.7	32.9	24.0	192.6	400 MCM	NOP 700 NOM 2500A NOM 3000		10		
<b>CB 200-12S</b>	13.0								242.27		NOP 700 NOM 2500A NOM 3000	NOH 300K			
<b>CB 250-8</b>	8.4	40.0	81.2	17.0	31.0	33.2	35.6	26.5	250	—	NOP 700 NOM 2500A NOM 3000		10		
<b>CB 250-10</b>	10.5														
<b>CB 250-12</b>	13.0														
<b>CB 325-12S</b>	13.0	38.5	85.5	17.0	32.0	36.5	37.8	28.0	242.27	500-600 MCM	NOP 700 NOM 2500A NOM 3000		10		
<b>CB 325-12</b>		44.0							325		NOH 300K				

NOTE

- : UL, CSA    ▲ : JEMA standards (Japan Electrical Manufacturers' Association)
- Refer to page 14 for UL/CSA and proper strip length of wire.
- Please use the dies for 325mm<sup>2</sup>, to crimp CB 250-\* with NOH 300K.
- REC-Li250M (Maxell Izumi Co., Ltd.) is also available for CB 250-8, CB 250-10, CB 250-12 (250mm<sup>2</sup>).