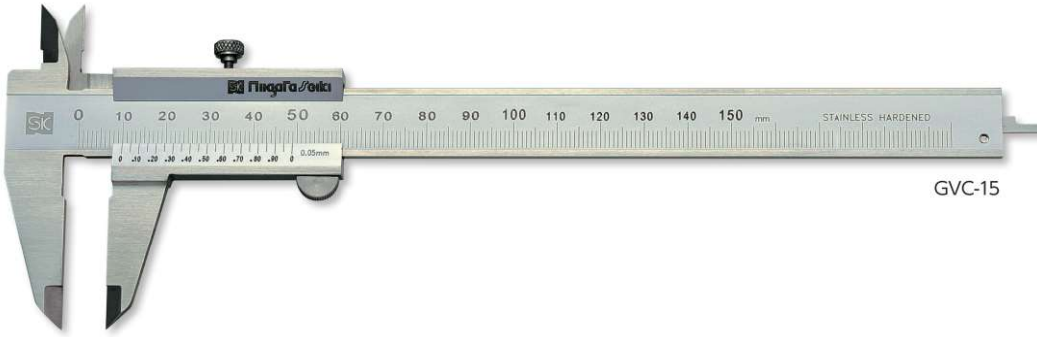


VERNIER CALIPER



Basic plain design

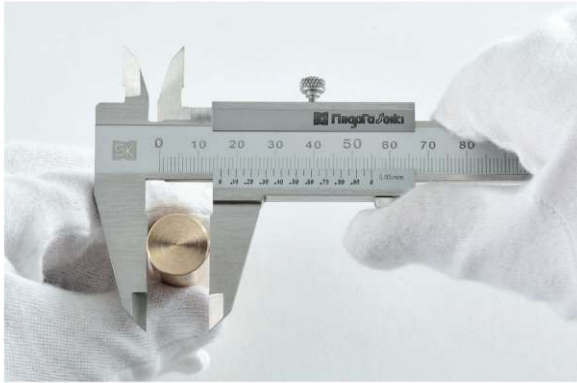


Reference standard for calibration ▶
Block Gauge
P42
~49

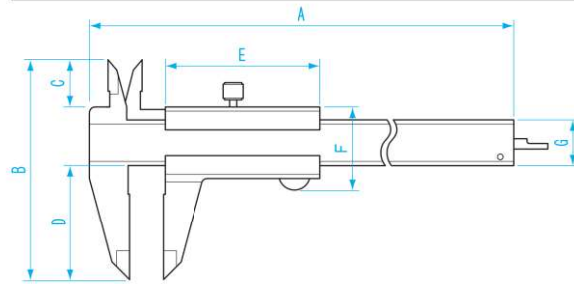
For measurement of concave area ▶
Caliper Attachment
P163

For holding calipers ▶
Combination Stand
P226

Rust prevention ▶
Zerust Film for Steel
P380



● DIMENSIONS



USE

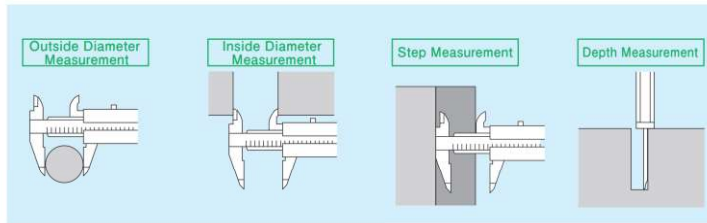
- For outside diameter, inside diameter, step and depth measurement

MATERIAL

- Stainless steel

FEATURES

- Mono block vernier caliper
- Integrated vernier type for easy reading
- Satin finish



Units: mm

Model No.	A	B	C	D	E	F	G
GVC-10	177	77	16.5	40	53	30	16
GVC-15	228						
GVC-20	290	90.5	19	50	60	31	17
GVC-30	403	111	22	64	67.5	35	20
TVC-60	770	168	38	100	92	45	24
TVC-100	1230	238	50	150	125	53	31

Order No.	Model No.	Measuring Range (mm)	Resolution (mm)	Accuracy (mm)	Depth Bar (Yes/None)	Weight
151383	GVC-10	100	0.05	± 0.05	Yes	125g
151384	GVC-15	150				140g
151385	GVC-20	200				210g
151386	GVC-30	300		± 0.08	None	380g
151095	TVC-60	600		± 0.10		1.2kg
151096	TVC-100	1000		± 0.15		2.5kg