

Motor Control and Protection

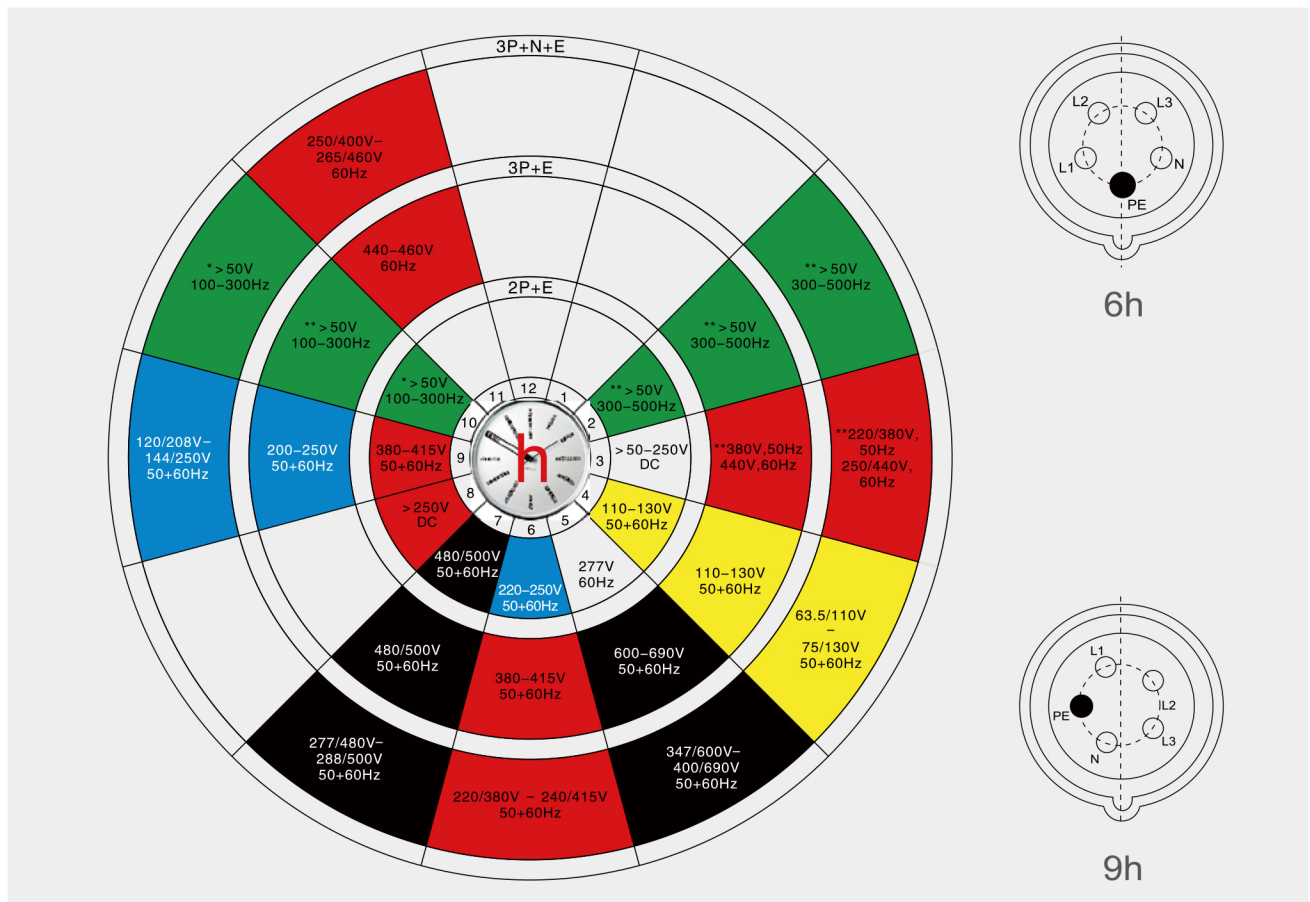
4. Model Description

N	X	TC	3	16	P	6h	250V	W
Manufacturer identification code	Design series number	Industrial plug/ socket	Number of poles	Current rating	Product type	Position of earthing pole	Voltage rating	Protection
			3:2P+E 4:3P+E 5:3P+N+E	16A 32A 63A 125A	P: Movable plug AP: Panel-mounted straight plug C: Connector MXS: Connector AS: Panel-mounted straight socket	6h	AC250V AC415V	Null: IP44 W: IP67

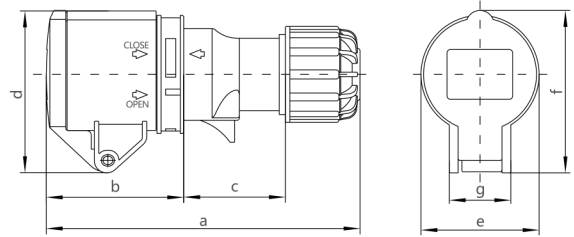
4.1 Model example

NXTC-316P6h/250VW stands for a movable industrial plug with 3 poles, rated current of 16A, rated voltage of 250V and protection level of IP67.

4.2 Color coding and position of earthing terminal



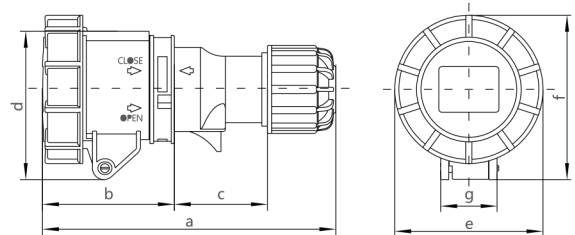
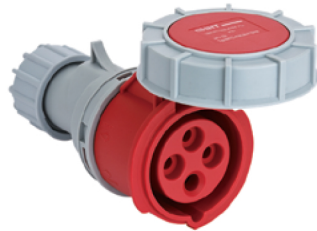
We have defined different product models in the corresponding sectors of a clock, wherein the sectors marked in black refer to standard models, and others are special models that need to be customized. The left circle table shows an overview of the clock, number of poles and voltage respectively to help you easily identify the characteristics of each product. The right two figures show a socket or connector with the PE conductor in the 6h and 9h positions respectively. This product clock diagram is based on the hole of a socket or connector to indicate the direction of the clock.



16A-63A/IP44

Figure 3

Ampere (A)/Protection		16A/IP44			32A/IP44			63A/IP44		
Poles (P)		3	4	5	3	4	5	3	4	5
Dimensions (mm)	a	136	142.5	150	171	171	176	233.7	233.7	233.7
	b	61	62	62	75	75	75	105.5	105.5	105.5
	c	42.2	47.5	55	59	59	64	73.2	73.2	73.2
	d	72	77	82.5	88.6	88.6	100.2	108.1	108.1	108.1
	e	52.2	58.6	65.3	67.4	67.4	73.5	95.7	95.7	95.7
	f	72	77	82.5	88.6	88.6	100.2	108.1	108.1	108.1
	g	27.2	27.2	27.2	34.5	34.5	34.5	34	34	34



16A-125A/IP67

Figure 4

Ampere (A)/Protection		16A/IP67			32A/IP67			63A/IP67			125A/IP67		
Poles (P)		3	4	5	3	4	5	3	4	5	3	4	5
Dimensions (mm)	a	139	145	152	172.8	172.8	178.5	236.1	236.1	236.1	302.3	302.3	302.3
	b	63.5	64.5	64.5	76.8	76.8	77.5	107.9	107.9	107.9	115.4	115.4	115.4
	c	42.2	47.5	55	59	59	64	73.2	73.2	73.2	122.9	122.9	122.9
	d	71.5	77	84	87.5	87.5	99	102.4	102.4	102.4	114.2	114.2	114.2
	e	71.5	79	87.5	93	93	101	117	117	117	129.7	129.7	129.7
	f	79.2	85	91	96.5	96.5	108.5	112.6	112.6	112.6	123.4	123.4	123.4
	g	27.2	27.2	27.2	34.5	34.5	34.5	34	34	34	34.5	34.5	34.5