

ESB100..N installation contactors

Ordering details 100 A, AC-1/AC-7a, AC/DC operated



ESB100-20N

2CDC221010V0017



ESB100-40N

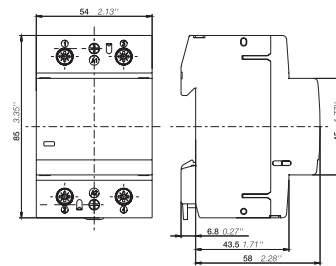
2CDC221011V0017

The ESB100..N installation contactors are used to control single and three-phases loads up to 100 A and can be operated by AC or DC voltages. These contactors are made for use in household applications as well as in industrial environment.

ESB100..N series is providing the following benefits:

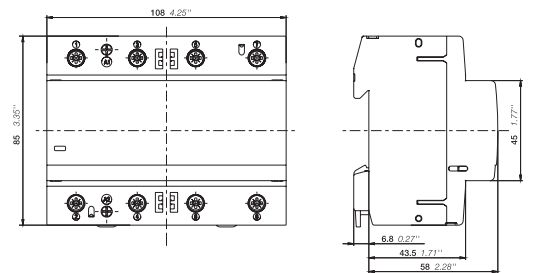
- Hum-free operation, low power consumption and integrated overvoltage protection.
- Various contact combinations and accessories are available.

| Main contacts | Width in number of modular spacings | Rated control circuit voltage V AC/DC | Type | Order code | Pkg qty | Weight (1 pc.) kg |
|--------------------|-------------------------------------|--|---------------|-----------------|---------|----------------------|
| Single packaging | | | | | | |
| | 6 | 24 | ESB100-40N-01 | 1SAE661111R0140 | 1 | 0.810 |
| | | 230 | ESB100-40N-06 | 1SAE661111R0640 | 1 | 0.810 |
| | 3 | 24 | ESB100-20N-01 | 1SAE361111R0120 | 1 | 0.405 |
| | | 230 | ESB100-20N-06 | 1SAE361111R0620 | 1 | 0.405 |
| Multiple packaging | | | | | | |
| | 3 | 24 | ESB100-20N-01 | 1SAE361111M0120 | 2 | 0.405 |
| | | 230 | ESB100-20N-06 | 1SAE361111M0620 | 2 | 0.405 |



ESB100-20N

2CDC222005F0017



ESB100-40N

2CDC222005F0017

Dimensions mm, inches