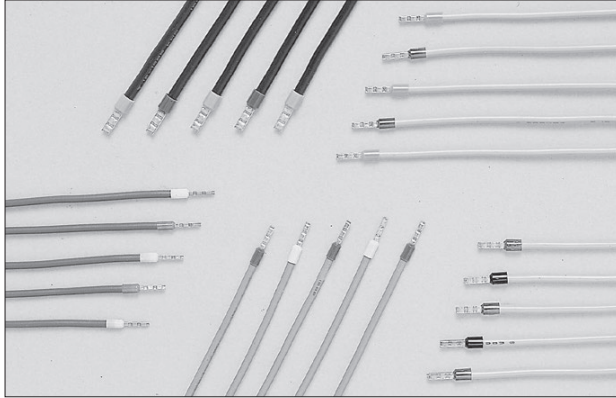


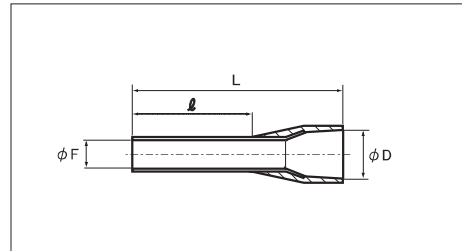
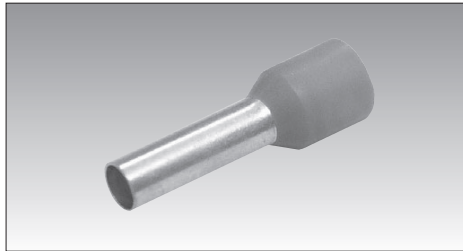
WIRE ENDS



SPECIFICATIONS

- MATERIAL : SLEEVE : Copper (Tin-plated)
INSULATOR : Polypropylene
- STANDARD : DIN46228/4 (Except for ※)

■ SINGLE WIRE

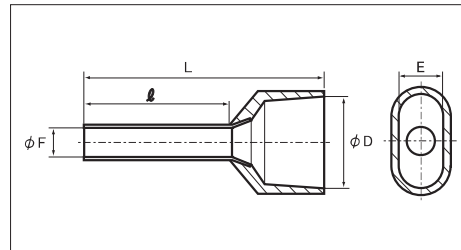
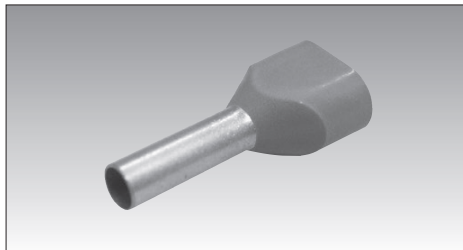


RoHS 10

See page 2

PART NUMBER	DIMENSIONS mm				WIRE RANGE		TOOL No. HAND TOOL No.	COLOR	STD QTY/BAG	
	ϕF	ϕD	ℓ	L	STRANDEDmm ²	AWG				
NF 0.14-8 ※	0.8	1.9	8.0	12.0	0.14	26	NH 89	GRAY	500	
NF 0.25-8 ※	0.8	1.9	8.0	12.0	0.25	24		YELLOW		
NF 0.34-8 ※	0.8	1.9	8.0	12.0	0.34	22		TURQUOISE		
NF 0.5-8	1.1	2.4	8.0	14.0	0.5	20	NH 79A NH 89	WHITE		
NF 0.5-10			10.0	16.0				BLUE/GRAY		
NF 0.75-8	1.3	2.7	8.0	14.0	0.75	20		RED		
NF 0.75-10			10.0	16.0				BLACK		
NF 1.0-8	1.5	2.9	8.0	14.0	1.0	18		GRAY/BLUE		200
NF 1.0-10			10.0	16.0				BLUE		
NF 1.5-8	1.8	3.3	8.0	14.0	1.5	16		GRAY		500
NF 1.5-10			10.0	16.0				BLUE		
NF 2.5-8	2.3	4.1	8.0	15.0	2.5	14		GRAY	200	
NF 2.5-10			10.0	17.0				ORANGE		
NF 2.5-12			12.0	19.0			GREEN			
NF 4.0-10	2.9	4.7	10.0	17.0	4.0	12		100		
NF 6.0-12	3.6	6.1	12.0	20.0	6.0	10				

■ TWIN WIRE



RoHS 10

See page 2

PART NUMBER	DIMENSIONS mm				WIRE RANGE		TOOL No. HAND TOOL No.	COLOR	STD QTY/BAG
	ϕF	ϕD	E	ℓ	L	STRANDEDmm ²			
NFW 0.5-8 ※	1.5	4.6	2.4	8.0	15.0	0.5×2	20×2	WHITE	500
NFW 0.75-8 ※	1.8	5.4	2.7		15.0	0.75×2	20×2	BLUE/GRAY	
NFW 1.0-8 ※	2.0	5.3	3.3		15.0	1.0×2	18×2	RED	
NFW 1.5-8 ※	2.3	6.5	3.5		16.0	1.5×2	16×2	BLACK	
NFW 2.5-10 ※	2.9	7.7	4.1	10.0	19.0	2.5×2	14×2	GRAY/BLUE	