

STND / STND-N Series

Warning lights with electric horn supports 30 prerecorded, 30 user defined sound tones(MP3)

PRODUCT SPECIFICATION

STNDL | STND100 | STND125
STNDL-N | STND100-N | STND125-N

Materials Lens-AS, Housing-ABS,
Reflector-Heat resistant ABS

Protection rating IP54

Compliant with RoHS directive

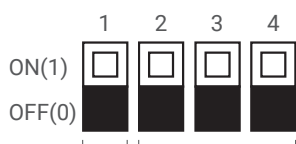
- Combination of warning light and horn allows transmission of both visual and audible signals together
- Appropriate sound tones can be chosen depending on the various working environments among the various type of available sound tones
- Sound tone selector and volume controller in front of the device allows convenient use
- SD Card type allows user defined sound tone
- Built-in 30 sound tones, support binary and bit input modes
- Binary input mode allows the user to select from 30 different sound options with the tone selection switch
- Bit input mode consists of 5 sound types with 6 groups. Choose one of the groups to play 5 sounds from that group.(MP3 is separate from the 6 groups)
- Standard unit choose built-in sound only. It can choose 30 sounds in accordance with the customer's needs.



STND Series

Sound Selection Instruction for SDcard Type

- SD card type unit
- It can choose both built-in sounds and user defined sounds(MP3) by controlling sound setup switch no. 1.
- Standard unit
- It can choose both Bit input mode and Binary input mode by controlling sound setup switch no. 1.



Sound Selection

- 0: Built-in sound
- 1: SD Card(MP3)

Standard unit(Built-in sound only)

- 0:Bit input(Can choose 5 channels per group)
- 1:Binary(Can choose 30 channels)

Bit input mode selection from 6 groups

- 001: WS(5 Warning sounds)
- 010: WP(5 Special warning sounds 1st group)
- 011: WM(5 Melodies)
- 100: WA(5 Alarms)
- 101: WO(5 Special warning sounds 2nd group)
- 110: WN(5 Special warning sounds 3rd group)

- 30 pre-recorded sounds offered(5 warning sounds, 5 special warning sounds 1st group, 5 melodies, 5 alarms, 5 special warning sounds 2nd group, 5 special warning sounds 3rd group)
- External MP3 sound support(SD card)
- Binary input: 30 channels
- Bit input: 5 channels(6 sound groups)
- A multi-functional product that can use an SD card for MP3 playback
- Please refer to [Sound pattern and combination for multifunctional product] on this catalogue for channel input setting.

Features per modelst

	STNDL/STND100 STND125(MP3)	STNDL-N/STND100-N STND125-N (standard unit)	Column
Support SD card(MP3)	O	X	
Support 30 built-in sounds	O	O	
Play mode	O	X	
Bit/Binary input	O	O	Please refer to sound setup switch manual parts

STNDL / STND100,125(MP3)

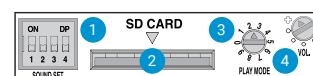
- User defined 30 sounds
- 30 built-in sounds

STNDL-N / STND100,125-N (standard unit)

- 30 built-in sounds

Multifunctional Type

- Standard unit does not support either SD card or Play mode.



- 1 Switch for Sound Selection
- 2 SD Card Slot
- 3 for MP3
- 4 Switch for Volume Adjustment

User-defined sound(MP3)

- User-defined sound(MP3) type



Customer can create a playlist and grouping conveniently through PC. Product supports up to 32Gbyte. SD Card is an optional item.

STNDL-N Series



STNDL Series

STNDL-N / STNDLF-N LED Steady/Flashing Tower Light & Electric Horn

Model number	Layer	Voltage	Sound pattern and volume	Certificates	Weight	Color
STNDL Steady STNDLF Steady/ Flashing	1	DC12V	·WS-Warning sound ·WP-Special warning sound 1st group ·WM-Melody ·WA-Alarm ·Bit Input: 5Ch ·Binary Input: 30Ch ·Built-in sounds : Max.105dB (Based on WS-Ch5)	CE	1.19kg	● R-Red
		DC24V			1.19kg	
		AC110V-220V			1.58kg	
	2	DC12V			1.43kg	● R-Red ● A-Amber ● G-Green
		DC24V			1.43kg	
		AC110V-220V			1.82kg	
	3	DC12V			1.67kg	● R-Red ● A-Amber ● G-Green
		DC24V			1.67kg	
		AC110V-220V			2.06kg	
	4	DC12V			1.91kg	● R-Red ● A-Amber ● G-Green ● B-Blue
		DC24V			1.91kg	
		AC110V-220V			2.30kg	
	5	DC12V			2.15kg	● R-Red ● A-Amber ● G-Green ● B-Blue ○ W-White
		DC24V			2.15kg	
		AC110V-220V			2.54kg	

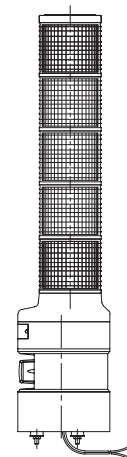
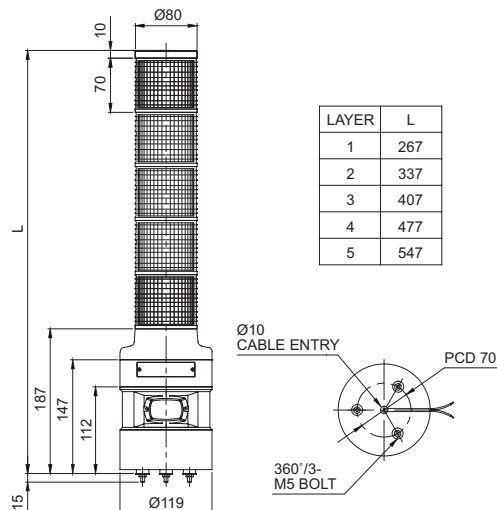
- Lens colors are interchangeable
- Ambient operating temperature: -30°C to +50°C
- ※ CE compliant: DC24V, AC110V, AC220V

Light source/signal sound current(based on 1 layer)

Voltage	DC12V	DC24V	AC110V-220V
Light source current(1 layer)	160mA	95mA	Max.70mA
Signal sound current	285mA	185mA	Max.105mA

Technical Diagram

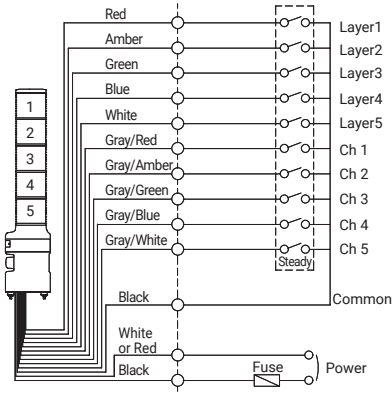
Units: mm



Wiring Instructions

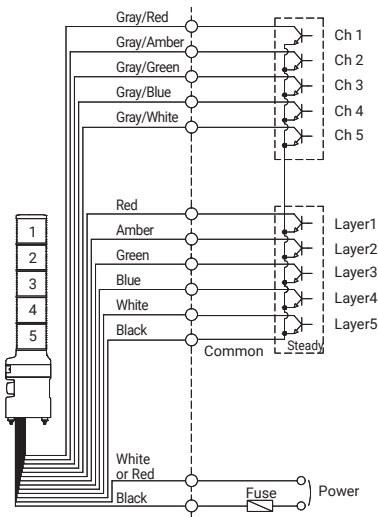
·STNDL-N-DC/AC(Steady)

External Contact



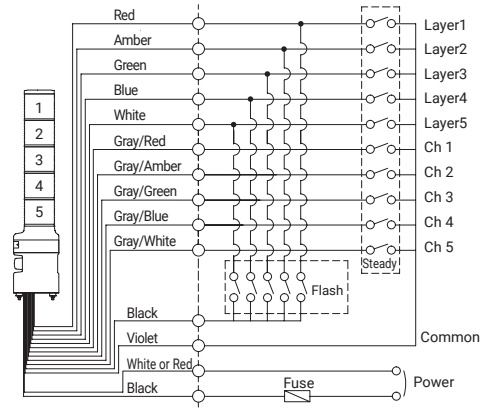
·STNDL-N-DC/AC(Steady)

External transistor-NPN



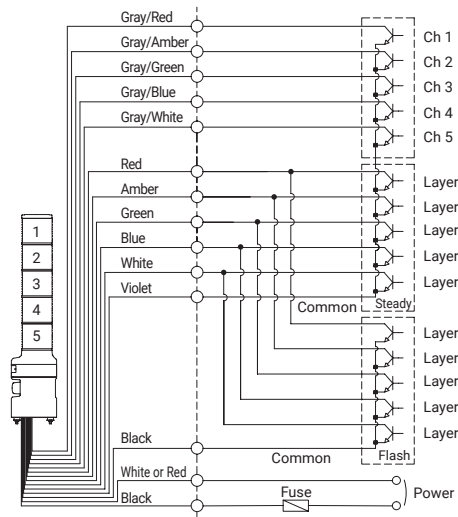
·STNDLF-N-DC/AC(Steady/Flashing)

External Contact



·STNDLF-N-DC/AC(Steady/Flashing)

External transistor-NPN



- External Power line - UL1015 AWG18(0.75sq) x 2C 400mm
- External signal line - UL1007 AWG22(0.3sq) 400mm
- This product can be wired regardless of polarity.
- In case of Bit input, 5 sound tones can be played. For Binary input, 30 sound tones can be played.

Ordering pecification

STNDL-N	-	3	-	24	-	RAG
[Model number]		[Layer]		[Voltage]		[Color]
STNDL-N		1-1Layer		12-DC12V		● R-Red
STNDLF-N		2-2Layers		24-DC24V		● A-Amber
		3-3Layers		110/220-AC110V-220V		● G-Green
		4-4Layers				● B-Blue
		5-5Layers				○ W-White



Do not apply a voltage to each signal line. It may cause damage to the product

- NPN transistor(non-External Contact control) can be enabled by using the flashing Common line for the light source.
- Each unit's light source and signal sound do not operate identically even though multiple units are working at the same time.
- Do not short-circuit between steady Common and flash Common. Signal light won't work properly.