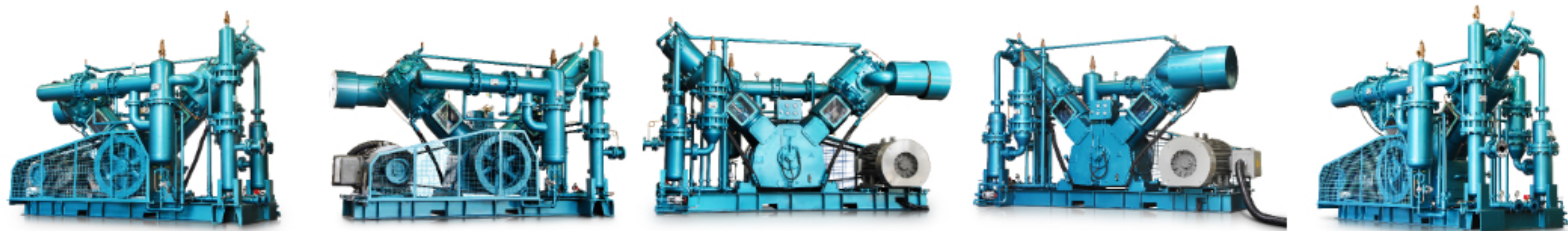
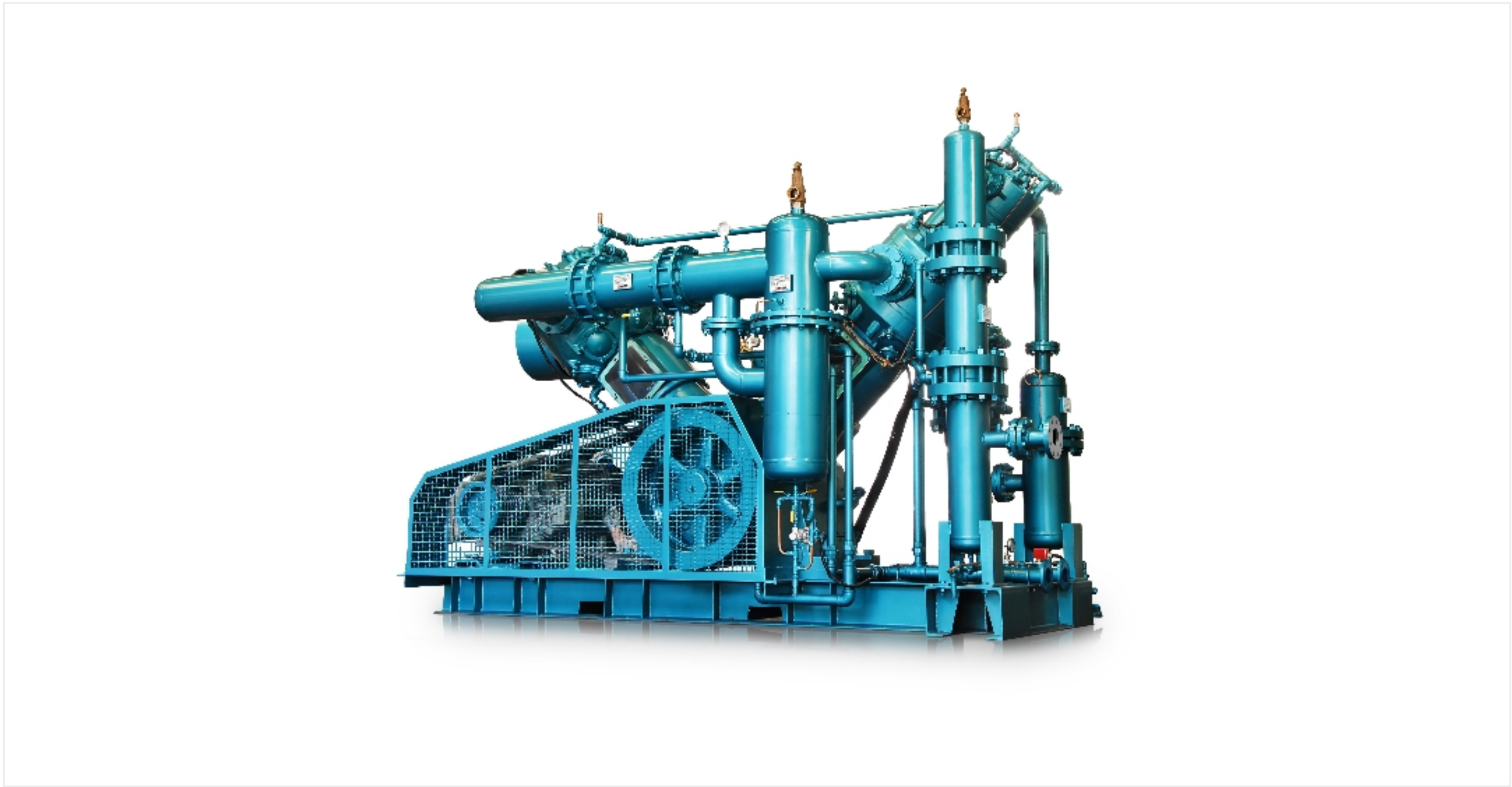


VFW Series

OIL-FREE RECIPROCATING COMPRESSOR

INSTRUCTIONS

The Fusheng VFW oil-free, high-pressure, 100% clean air compressor series is specially designed for the PET blow molding industry. Drawing from the wealth of experience gained from long-term operations in varying conditions, the compressors are engineered to be highly efficient and reliable as they provide a stable supply of compressed air for blow molding. The series ranges from 50 to 300HP with discharge pressures ranging from 25 to 40 kg/cm2 and is accommodated for variable injection volumes. The VFW series has a built-in user-friendly interface, touch-screen panel, and PLC control system. The compressor is equipped with multiple alert systems and safety features for better overall control. Operating parameters, status, and servicing instructions are shown on the monitor to provide the user with important data concerning periodic and preventive maintenance.



FEATURES

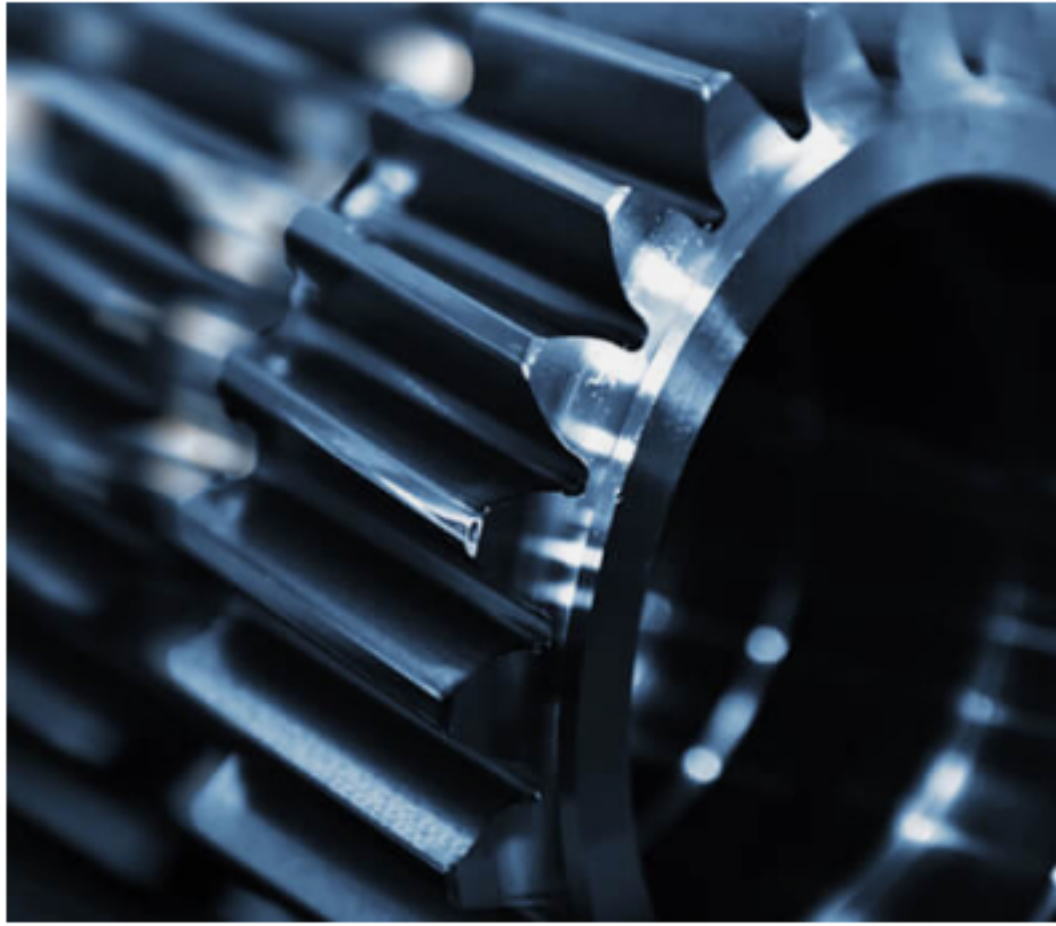


The PLC control system offers a user-friendly interface. It is equipped with multiple alert systems and safety features for better overall control. Real-time operating parameters, status, and servicing instructions are shown on the monitor to provide the user with important data concerning periodic and preventive maintenance.

Each standard model features capacity control ranging from 0% to 100%, but customization for 0% to 50% to 100% is also available. Automatic flow control can automatically perform loading/unloading adjustments to avoid machine halts from over-idling, and to prevent the compressor from frequently turning on/off and idling. As a result, energy saving can be achieved, the service life of parts are pr... [▼ open](#)



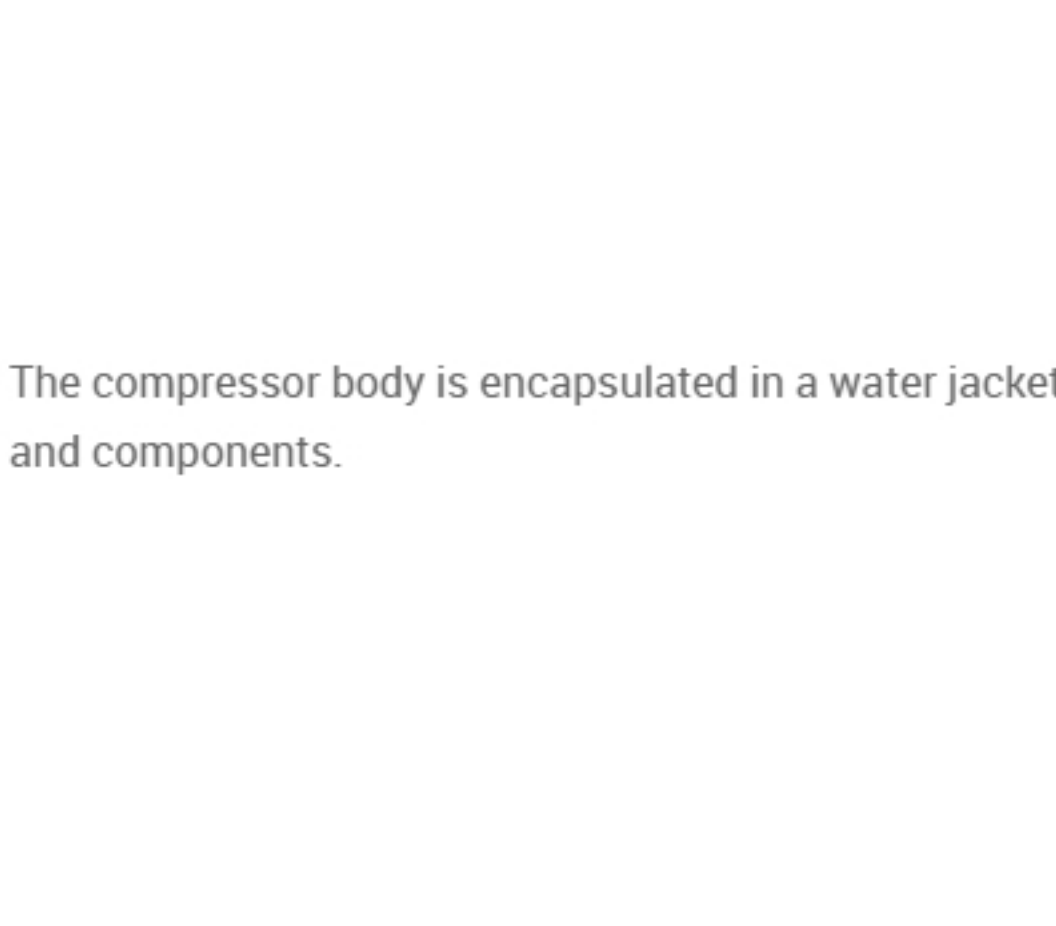
μ-level air filtering accuracy, suitable for various industrial environments



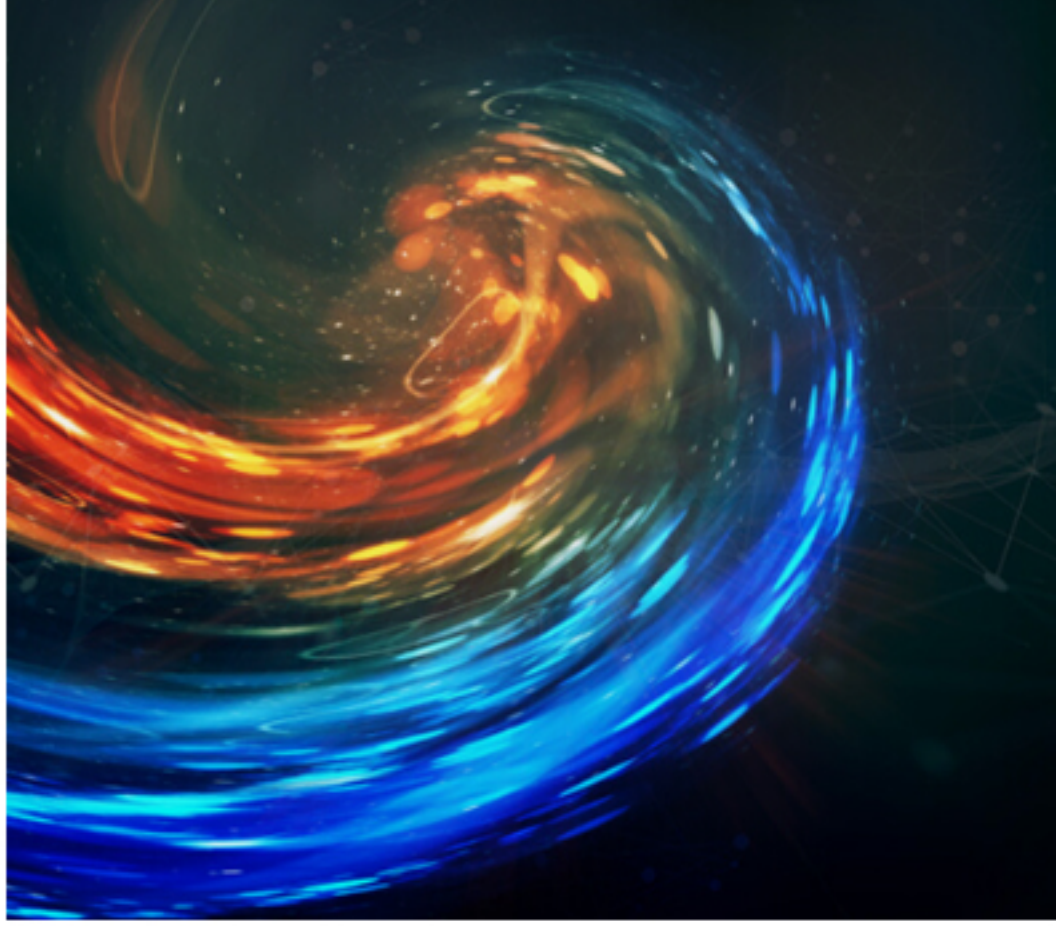
Driven by the crankshaft of the oil pump so that no additional power needed.



Suction/discharge valves are made of stainless steel for high strength and a long service life. Pistons are made of aluminum alloy for effective weight reduction and dynamic balance.



The compressor body is encapsulated in a water jacket for effective cooling and increased longevity of parts and components.



Features the latest defogging design and optimized condensation separation for greater compression efficiency

SPECIFICATION

SPECIFICATION

You can check the interested models and send inquiry to us.

Model	Working Pressure (kg/cm ² G)	Delivery (m ³ /min)	Motor Power HP (kW)	Weight (kg)	Dimension L.W.H (mm)
<input type="checkbox"/> VFW-50	40	3.6	50 (37)	3500	3400 x 1750 x 2000
<input type="checkbox"/> VFW-75	40	5.5	75 (55)	6500	4400 x 2550 x 2500
<input type="checkbox"/> VFW-100	40	7.4	100 (75)	6500	4400 x 2550 x 2500
<input type="checkbox"/> VFW-125	40	8.8	125 (90)	6500	4400 x 2550 x 2500
<input type="checkbox"/> VFW-150	40	11.6	150 (110)	9000	5100 x 2550 x 2900
<input type="checkbox"/> VFW-175	40	13.5	175 (132)	9000	5100 x 2550 x 2900
<input type="checkbox"/> VFW-215	40	16	215 (160)	9000	5100 x 2550 x 2900
<input type="checkbox"/> VFW-250	40	19.2	250 (185)	9500	4400 x 2100 x 2810
<input type="checkbox"/> VFW-300	40	23	300 (220)	10000	4400 x 2100 x 2810

INQUIRY

APPLICATIONS



Textile Industry



Bacteria Culturing



Pharmaceuticals



Steel & High-Tech Industry