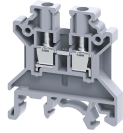


CTS4UNP



4 sq.mm Feed Through Philips Head screw Terminal Blocks

4 sq.mm Feed Through Terminal Blocks are the most Versatile terminals for control, Automation, Instrumentation and Power Distribution applications. A specially designed flexible foot enable easy mounting and dismounting from the Din rail with the help of screw driver. These Terminal Blocks have marker holding recesses to accept marking tags for circuit identification. Cross connection can be achieved with the aid of shorting links / sleeves & screws.

TECHNICAL DATA

Rated Voltage	1000 V
Rated Current	32 A
Tightening Torque	0.5 Nm
Housing Material	Polymide
Standard Colour	Grey
Product Function	Feed Through
Wire Entry Orientation	Side Entry
Mounting Possibility	DIN 32/DIN 35/DIN 35-15 Rail
Screw Size	M3
Operated by	Screwdriver
Rated Surge Voltage	8 KV
Pollution Degree	3

CONNECTION DATA

Conductor Cross Section Stranded min.	0.2 mm ²
Conductor Cross Section Stranded max.	4 mm ²
Conductor Cross Section AWG/Kcmil min	22 AWG
Conductor Cross Section AWG/Kcmil max	10 AWG
Conductor Cross Section Stranded with Ferrule/Lug min	0.2 mm ²
Conductor Cross Section Stranded with Ferrule/Lug max	4 mm ²
2 Conductors with same Cross Section Stranded min	0.2 mm ²
2 Conductor with same Cross Section Stranded max	2.5 mm ²
Conductor Cross Section Solid min	0.2 mm ²
Conductor Cross Section Solid max	6 mm ²
2 Conductors with same Cross Section Stranded with TWIN Ferrule/Lug min	0.2 mm ²
2 Conductor with same Cross Section Stranded with TWIN Ferrule/Lug max	2.5 mm ²
Stripping Length	9 mm
Internal Cylindrical Guage	A4

DIMENSIONS

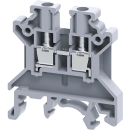
Height with DIN 32 rail	51.1 mm
Height with DIN 35 x 15 mm rail	53.7 mm
Height with DIN 35 x 7.5 mm rail	46.2 mm
Length	43 mm
Width (Thickness)	6 mm

ORDERING INFORMATION

CAT. NO.	DESCRIPTION	STD. PACK
CTS4UNP	4 sq.mm Feed Through Philips Head screw Terminal block in Grey colour	100

ACCESSORIES

IMAGES	CAT. NO.	DESCRIPTION	STD. PACK
	CA501-1M	Din 32 Rail unslotted 1 meter	50
	CA501-1M-S	Din 32 Rail slotted 1 meter	50
	CA501-2M	Din 32 Rail unslotted 2 meter	50
	CA501-2M-S	Din 32 Rail slotted 2 meter	50
	CA701-1M	Din 35 Rail unslotted 1 meter	50
	CA701-2M	Din 35 Rail unslotted 2 meter	50
	CA701-2M-S	Din 35 Rail slotted 2 meter	50
	CA701-1M-S	Din 35 Rail slotted 1 meter	50
	CA701-15-1M	Din 35 Rail 15 deep unslotted 1 meter	50
	CA701-15-1M-S	Din 35 Rail 15 deep slotted 1 meter	50
	CA701-15-2M	Din 35 Rail 15 deep unslotted 2 meter	50
	CA701-15-2M-S	Din 35 Rail 15 deep slotted 2 meter	50
	CA702	End Clamp in Polyamide 66 suitable for Din 32 / Din 35 / Din 35-15 Rails	50
	CA802	End Clamp in Polyamide suitable for Din 35 / Din 35-15 Rails	50
	EP2.5/4UN	End Plate in Grey Colour	50
	EP2.5/4UNY	End Plate in Yellow Colour	50
	EP2.5/4UNBU	End Plate in Blue Colour	50
	EP2.5/4UNR	End Plate in Red Colour	50
	PP2.5/4UN	Partition Plate in Grey colour	50
	SP2.5/4UN	Separator Plate in Grey colour	100



ACCESSORIES

IMAGES	CAT. NO.	DESCRIPTION	STD. PACK
	CA722/2	Pre Assembled Shorting Link assemblies with 2 poles	100
	CA722/3	Pre Assembled Shorting Links assemblies with 3 poles	100
	CA722/4	Pre Assembled Shorting Links assemblies with 4 poles	100
	CA722/5	Pre Assembled Shorting Links assemblies with 5 poles	100
	CA722/10	Pre Assembled Shorting Links assemblies with 10 poles	10
	CA722/100	Pre Assembled Shorting Links assemblies with 100 poles	10

ACCESSORIES

IMAGES	CAT. NO.	DESCRIPTION	STD. PACK
	CA713/2	External Comb Type Shorting Link available in 2 Pole	100
	CA713/3	External Comb Type Shorting Link available in 3 Pole	100
	CA713/4	External Comb Type Shorting Link available in 4 Pole	100
	CA713/10	External Comb Type Shorting Link available in 10 Pole	20

APPROVALS



	CA742/2	Insulated Pre assembled Shorting Link for 2 way shorting	100
	CA742/3	Insulated Pre assembled Shorting Link for 3 way shorting	100
	CA742/4	Insulated Pre assembled Shorting Link for 4 way shorting	100
	CA742/10	Insulated Pre assembled Shorting Link for 10 way shorting	10
	CA742/100	Insulated Pre assembled Shorting Link for 100 way shorting	10

	CA703/1	Permanent Shorting Link for 2 way shorting	100
	CA704/1	Permanent Shorting Link for 3 way shorting	100
	CA705/1	Permanent Shorting Link for 4 way shorting	100
	CA732/10	Permanent Shorting Link for 10 way shorting	100
	CA732/10-A	Permanent Shorting Link (Breakable) for 10 way shorting	100
	CA732/100	Permanent Shorting Link for 100 way shorting	100

	CA707/S/Q/01	Shorting Sleeve and Screw	100
--	--------------	---------------------------	-----

	CA706/1	Removable Shorting link suitable for CTS2.5UE / CTS4UN / CMT4	100
--	---------	---	-----

	CA707/L/Q/01	Long Shorting Sleeves and Screw	100
--	--------------	---------------------------------	-----

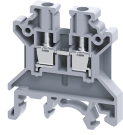
	CA509/K6	Blank Marking Tag	100
--	----------	-------------------	-----

	SWL4	Warning label suitable for 6mm wide terminal block	50
--	------	--	----

	CA707/TS/01	Test Socket Suitable for CTS2.5UN / CTS2.5UE / CTS4UN / CTC4U / CMB4 / CTLG2.5 / CTL2.5U / CTL2.5UH / ODL4U / ODL4UA / CDLG2.5 / CMC1-2 / CMC2-2 Terminal Blocks.	100
--	-------------	---	-----

	SCS0.6/3.5	Electricians Screwdriver for slotted screws	10
--	------------	---	----

CTS4UNP



connectwell
THE RIGHT CONNECTION

RATINGS AS PER STANDARDS

STANDARDS	UL 1059	CSA C.22.2 No:158	IEC/EN60947-7-1
Approvals	UL	CSA	CE
Conductor Cross Section Stranded min.	22 AWG	22 AWG	0.2 mm ²
Conductor Cross Section Stranded max.	10 AWG	10 AWG	4 mm ²
Rated Voltage	600 V	600 V	1000 V
Rated Current	40 A	40 A	32 A
Tightening Torque	7 lb-in	7 lb-in	0.5 Nm

CTS4UNCR



connectwell
THE RIGHT CONNECTION

4 sq.mm Feed Through Terminal Blocks

4 sq.mm Feed Through Terminal Blocks are the most Versatile terminals for control, Automation, Instrumentation and Power Distribution applications. A specially designed flexible foot enable easy mounting and dismounting from the Din rail with the help of screw driver. These Terminal Blocks have marker holding recesses to accept marking tags for circuit identification. Cross connection can be achieved with the aid of shorting links / sleeves & screws.

TECHNICAL DATA

Rated Voltage	1000 V
Rated Current	32 A
Tightening Torque	0.5 Nm
Housing Material	Polymide
Standard Colour	Grey
Product Function	Feed Through
Wire Entry Orientation	Side Entry
Mounting Possibility	DIN 32/DIN 35/DIN 35-15 Rail
Screw Size	M3
Operated by	Screwdriver
Rated Surge Voltage	8 KV
Pollution Degree	3

CONNECTION DATA

Conductor Cross Section Stranded min.	0.2 mm ²
Conductor Cross Section Stranded max.	4 mm ²
Conductor Cross Section AWG/Kcmil min	22 AWG
Conductor Cross Section AWG/Kcmil max	10 AWG
Conductor Cross Section Stranded with Ferrule/Lug min	0.2 mm ²
Conductor Cross Section Stranded with Ferrule/Lug max	4 mm ²
2 Conductors with same Cross Section Stranded min	0.2 mm ²
2 Conductor with same Cross Section Stranded max	2.5 mm ²
Conductor Cross Section Solid min	0.2 mm ²
Conductor Cross Section Solid max	6 mm ²
2 Conductors with same Cross Section Stranded with TWIN Ferrule/Lug min	0.2 mm ²
2 Conductor with same Cross Section Stranded with TWIN Ferrule/Lug max	2.5 mm ²
Stripping Length	9 mm
Internal Cylindrical Guage	A4

DIMENSIONS

Height with DIN 32 rail	51.1 mm
Height with DIN 35 x 15 mm rail	53.7 mm
Height with DIN 35 x 7.5 mm rail	46.2 mm
Length	43 mm
Width (Thickness)	6 mm

ORDERING INFORMATION

CAT. NO.	DESCRIPTION	STD. PACK
CTS4UNCR	4 sq.mm Feed Through Terminal block in Grey colour	100

ACCESSORIES

IMAGES	CAT. NO.	DESCRIPTION	STD. PACK
	CA501-1M	Din 32 Rail unslotted 1 meter	50
	CA501-1M-S	Din 32 Rail slotted 1 meter	50
	CA501-2M	Din 32 Rail unslotted 2 meter	50
	CA501-2M-S	Din 32 Rail slotted 2 meter	50
	CA701-1M	Din 35 Rail unslotted 1 meter	50
	CA701-2M	Din 35 Rail unslotted 2 meter	50
	CA701-2M-S	Din 35 Rail slotted 2 meter	50
	CA701-1M-S	Din 35 Rail slotted 1 meter	50
	CA701-15-1M	Din 35 Rail 15 deep unslotted 1 meter	50
	CA701-15-1M-S	Din 35 Rail 15 deep slotted 1 meter	50
	CA701-15-2M	Din 35 Rail 15 deep unslotted 2 meter	50
	CA701-15-2M-S	Din 35 Rail 15 deep slotted 2 meter	50
	CA702	End Clamp in Polyamide 66 suitable for Din 32 / Din 35 / Din 35-15 Rails	50
	CA802	End Clamp in Polyamide suitable for Din 35 / Din 35-15 Rails	50
	EP2.5/4UN	End Plate in Grey Colour	50
	EP2.5/4UNY	End Plate in Yellow Colour	50
	EP2.5/4UNBU	End Plate in Blue Colour	50
	EP2.5/4UNR	End Plate in Red Colour	50
	PP2.5/4UN	Partition Plate in Grey colour	50
	SP2.5/4UN	Separator Plate in Grey colour	100



ACCESSORIES

IMAGES	CAT. NO.	DESCRIPTION	STD. PACK
	CA722/2	Pre Assembled Shorting Link assemblies with 2 poles	100
	CA722/3	Pre Assembled Shorting Links assemblies with 3 poles	100
	CA722/4	Pre Assembled Shorting Links assemblies with 4 poles	100
	CA722/5	Pre Assembled Shorting Links assemblies with 5 poles	100
	CA722/10	Pre Assembled Shorting Links assemblies with 10 poles	10
	CA722/100	Pre Assembled Shorting Links assemblies with 100 poles	10

ACCESSORIES

IMAGES	CAT. NO.	DESCRIPTION	STD. PACK
	CA713/2	External Comb Type Shorting Link available in 2 Pole	100
	CA713/3	External Comb Type Shorting Link available in 3 Pole	100
	CA713/4	External Comb Type Shorting Link available in 4 Pole	100
	CA713/10	External Comb Type Shorting Link available in 10 Pole	20

APPROVALS



	CA742/2	Insulated Pre assembled Shorting Link for 2 way shorting	100
	CA742/3	Insulated Pre assembled Shorting Link for 3 way shorting	100
	CA742/4	Insulated Pre assembled Shorting Link for 4 way shorting	100
	CA742/10	Insulated Pre assembled Shorting Link for 10 way shorting	10
	CA742/100	Insulated Pre assembled Shorting Link for 100 way shorting	10

	CA703/1	Permanent Shorting Link for 2 way shorting	100
	CA704/1	Permanent Shorting Link for 3 way shorting	100
	CA705/1	Permanent Shorting Link for 4 way shorting	100
	CA732/10	Permanent Shorting Link for 10 way shorting	100
	CA732/10-A	Permanent Shorting Link (Breakable) for 10 way shorting	100
	CA732/100	Permanent Shorting Link for 100 way shorting	100

	CA707/S/Q/01	Shorting Sleeve and Screw	100
--	--------------	---------------------------	-----

	CA706/1	Removable Shorting link suitable for CTS2.5UE / CTS4UN / CMT4	100
--	---------	---	-----

	CA707/L/Q/01	Long Shorting Sleeves and Screw	100
--	--------------	---------------------------------	-----

	CA509/K6	Blank Marking Tag	100
--	----------	-------------------	-----

	SWL4	Warning label suitable for 6mm wide terminal block	50
--	------	--	----

	CA707/TS/01	Test Socket Suitable for CTS2.5UN / CTS2.5UE / CTS4UN / CTC4U / CMB4 / CTLG2.5 / CTL2.5U / CTL2.5UH / ODL4U / ODL4UA / CDLG2.5 / CMC1-2 / CMC2-2 Terminal Blocks.	100
--	-------------	---	-----

	SCS0.6/3.5	Electricians Screwdriver for slotted screws	10
--	------------	---	----

CTS4UNCR

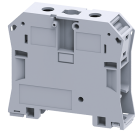


connectwell
THE RIGHT CONNECTION

RATINGS AS PER STANDARDS

STANDARDS	UL 1059	CSA C.22.2 No:158	IEC/EN60947-7-1
Approvals	UL	CSA	CE
Conductor Cross Section Stranded min.	22 AWG	22 AWG	0.2 mm ²
Conductor Cross Section Stranded max.	10 AWG	10 AWG	4 mm ²
Rated Voltage	600 V	600 V	1000 V
Rated Current	35 A	35 A	32 A
Tightening Torque	7 lb-in	7 lb-in	0.5 Nm

CTS50/70N



connectwell
THE RIGHT CONNECTION

50/70 sq.mm Feed Through Terminal Blocks with Slotted Screws

CTS50/70N Feed Through Terminal Blocks are the most Versatile terminals for control, Automation, Instrumentation and Power Distribution applications. A specially designed flexible foot enable easy mounting and dismounting from the Din rail with the help of screw driver. These Terminal Blocks have marker holding recesses to accept marking tags for circuit identification. Cross connection can be achieved with the aid of shorting links / sleeves & screws.

TECHNICAL DATA

Rated Voltage	1000 V
Rated Current	192 A
Tightening Torque	3 Nm
Housing Material	Polymide
Product Function	Feed Through
Wire Entry Orientation	Side Entry
Mounting Possibility	DIN 35/DIN 35-15 Rail
Screw Size	M6
Operated by	Screwdriver
Rated Surge Voltage	8 KV
Pollution Degree	3

CONNECTION DATA

Conductor Cross Section Stranded min.	10 mm ²
Conductor Cross Section Stranded max.	70 mm ²
Conductor Cross Section AWG/Kcmil min	8 AWG
Conductor Cross Section AWG/Kcmil max	2/0 AWG
Conductor Cross Section Stranded with Ferrule/Lug min	10 mm ²
Conductor Cross Section Stranded with Ferrule/Lug max	70 mm ²
2 Conductors with same Cross Section Stranded min	10 mm ²
2 Conductor with same Cross Section Stranded max	35 mm ²
Stripping Length	22 mm
Internal Cylindrical Gauge	A10

DIMENSIONS

Height with DIN 35 x 15 mm rail	78.1 mm
Height with DIN 35 x 7.5 mm rail	71.1 mm
Length	77.3 mm
Width (Thickness)	20.5 mm

ORDERING INFORMATION

CAT. NO.	DESCRIPTION	STD. PACK
CTS50/70N	70 sq.mm Feed Through Terminal Block in Grey colour	20
CTS50/70NR	70 sq.mm Feed Through Terminal Block in Red colour	20
CTS50/70NY	70 sq.mm Feed Through Terminal Block in Yellow colour	20

ORDERING INFORMATION

CAT. NO.	DESCRIPTION	STD. PACK
CTS50/70NBU	70 sq.mm Feed Through Terminal Block in Blue colour	20
CTS50/70NBK	70 sq.mm Feed Through Terminal Block in Black colour	20
CTS50/70NGN	70 sq.mm Feed Through Terminal Block in Green colour	20

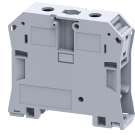
ACCESSORIES

IMAGES	CAT. NO.	DESCRIPTION	STD. PACK
	CA701-1M	Din 35 Rail unslotted 1 meter	50
	CA701-2M	Din 35 Rail unslotted 2 meter	50
	CA701-2M-S	Din 35 Rail slotted 2 meter	50
	CA701-1M-S	Din 35 Rail slotted 1 meter	50
	CA701-15-1M	Din 35 Rail 15 deep unslotted 1 meter	50
	CA701-15-1M-S	Din 35 Rail 15 deep slotted 1 meter	50
	CA701-15-2M	Din 35 Rail 15 deep unslotted 2 meter	50
	CA701-15-2M-S	Din 35 Rail 15 deep slotted 2 meter	50
	CA102	End Clamp in Polyamide suitable for Din32 / Din35 / Din35-15 Rails	50
	CA202	End Clamp in Polyamide suitable for Din 35 / Din 35-15 Rails	25
	CA628/2	Pre Assembled Shorting Link assemblies with 2 poles	10
	CA628/3	Pre Assembled Shorting Link assemblies with 3 poles	10
	AUX6	Auxiliary Terminal Block in Polyamide suitable for CTS50/70N / CTS95/120N	10
	CA509/K16	Marking Tag Blank suitable for CTS35UNA / CGT35U Terminal Blocks	100

APPROVALS



CTS50/70N

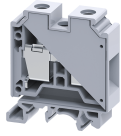


connectwell
THE RIGHT CONNECTION

RATINGS AS PER STANDARDS

STANDARDS	IEC/EN60947-7-1	UL 1059	CSA C.22.2 No:158
Approvals	CE	UL	CSA
Conductor Cross Section Stranded min.	10 mm ²	8 AWG	8 AWG
Conductor Cross Section Stranded max.	70 mm ²	2/0 AWG	2/0 AWG
Rated Voltage	1000 V	1000 V	1000 V
Rated Current	192 A	175 A	175 A
Tightening Torque	3 Nm	38 lb-in	38 lb-in

CTS35UN



35 sq.mm Feed Through Terminal Blocks with Slotted Screws

35 sq.mm Feed Through Terminal Blocks are the most Versatile terminals for control, Automation, Instrumentation and Power Distribution applications. A specially designed flexible foot enable easy mounting and dismounting from the Din rail with the help of screw driver. These Terminal Blocks have marker holding recesses to accept marking tags for circuit identification. Cross connection can be achieved with the aid of shorting links / sleeves & screws.

TECHNICAL DATA

Rated Voltage	1000 V
Rated Current	125 A
Tightening Torque	2.5 Nm
Housing Material	Polymide
Product Function	Feed Through
Wire Entry Orientation	Side Entry
Mounting Possibility	DIN 32/DIN 35/DIN 35-15 Rail
Screw Size	M6
Operated by	Screwdriver
Rated Surge Voltage	8 KV
Pollution Degree	3

CONNECTION DATA

Conductor Cross Section Stranded min.	4 mm ²
Conductor Cross Section Stranded max.	35 mm ²
Conductor Cross Section AWG/Kcmil min	12 AWG
Conductor Cross Section AWG/Kcmil max	1/0 AWG
Conductor Cross Section Stranded with Ferrule/Lug min	4 mm ²
Conductor Cross Section Stranded with Ferrule/Lug max	35 mm ²
2 Conductors with same Cross Section Stranded min	4 mm ²
2 Conductor with same Cross Section Stranded max	16 mm ²
2 Conductors with same Cross Section Stranded with TWIN Ferrule/Lug min	4 mm ²
2 Conductor with same Cross Section Stranded with TWIN Ferrule/Lug max	16 mm ²
Stripping Length	15 mm
Internal Cylindrical Guage	A9

DIMENSIONS

Height with DIN 32 rail	64.3 mm
Height with DIN 35 x 15 mm rail	66.7 mm
Height with DIN 35 x 7.5 mm rail	59.2 mm
Length	50.5 mm
Width (Thickness)	16 mm

ORDERING INFORMATION

CAT. NO.	DESCRIPTION	STD. PACK
CTS35UN	35 sq.mm Feed Through Terminal Block in Grey	50

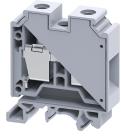
ORDERING INFORMATION

CAT. NO.	DESCRIPTION	STD. PACK
	colour	
CTS35UNR	35 sq.mm Feed Through Terminal Block in Red colour	50
CTS35UNY	35 sq.mm Feed Through Terminal Block in Yellow colour	50
CTS35UNBU	35 sq.mm Feed Through Terminal Block in Blue colour	50
CTS35UNBK	35 sq.mm Feed Through Terminal Block in Black colour	50
CTS35UNGN	35 sq.mm Feed Through Terminal Block in Green colour	50

ACCESSORIES

IMAGES	CAT. NO.	DESCRIPTION	STD. PACK
	CA501-1M	Din 32 Rail unslotted 1 meter	50
	CA501-1M-S	Din 32 Rail slotted 1 meter	50
	CA501-2M	Din 32 Rail unslotted 2 meter	50
	CA501-2M-S	Din 32 Rail slotted 2 meter	50
	CA701-1M	Din 35 Rail unslotted 1 meter	50
	CA701-2M	Din 35 Rail unslotted 2 meter	50
	CA701-2M-S	Din 35 Rail slotted 2 meter	50
	CA701-1M-S	Din 35 Rail slotted 1 meter	50
	CA701-15-1M	Din 35 Rail 15 deep unslotted 1 meter	50
	CA701-15-1M-S	Din 35 Rail 15 deep slotted 1 meter	50
	CA701-15-2M	Din 35 Rail 15 deep unslotted 2 meter	50
	CA701-15-2M-S	Din 35 Rail 15 deep slotted 2 meter	50
	CA702	End Clamp in Polyamide 66 suitable for Din 32 / Din 35 / Din 35-15 Rails	50
	CA802	End Clamp in Polyamide suitable for Din 35 / Din 35-15 Rails	50
	PP35UN	Partition Plate in Grey colour suitable for CTS35UN Terminal Block	50

CTS35UN



connectwell
THE RIGHT CONNECTION

ACCESSORIES

IMAGES	CAT. NO.	DESCRIPTION	STD. PACK
	CA771/2	Pre assembled Shorting Link for 2 way shorting	50
	CA771/3	Pre assembled Shorting Link for 3 way shorting	20
	CA771/4	Pre assembled Shorting Link for 4 way shorting	20
	CA771/10	Pre assembled Shorting Link for 10 way shorting	10
	CA781/2	Insulated Pre assembled Shorting Link for 2 way shorting	50
	CA781/3	Insulated Pre assembled Shorting Link for 3 way shorting	20
	CA781/4	Insulated Pre assembled Shorting Link for 4 way shorting	20
	CA781/10	Insulated Pre assembled Shorting Link for 10 way shorting	10
	CA703/10	Permanent Shorting Links for 2 way shorting	100
	CA704/10	Permanent Shorting Links for 3 way shorting	100
	CA705/10	Permanent Shorting Links for 4 way shorting	100
	CA770/10	Permanent Shorting Links for 10 way shorting	100
	CA707/S/Q/2	Shorting Sleeve and Screw suitable for CTS25UN / CTS35UN / CTS35UNA Terminal Blocks.	100
	CA509/K16	Marking Tag Blank suitable for CTS35UNA / CGT35U Terminal Blocks	100
	CA707/TS/06	Test Socket Suitable for CTS25UN / CTS35UN / CTS35UNA Terminal Blocks	100
	SCS1/5.5	Electricians Screwdriver for slotted screws	10

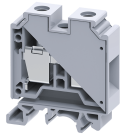
APPROVALS



RATINGS AS PER STANDARDS

STANDARDS	UL 1059	CSA C.22.2 No:158	IEC/EN60947-7-1
Approvals	UL	CSA	CE
Conductor Cross Section Stranded min.	12 AWG	12 AWG	4 mm ²
Conductor Cross Section Stranded max.	1/0 AWG	1/0 AWG	35 mm ²
Rated Voltage	600 V	600 V	1000 V
Rated Current	150 A	150 A	125 A
Tightening Torque	50 lb-in	50 lb-in	2.5 Nm

CTS35UN

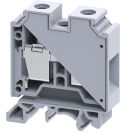


connectwell
THE RIGHT CONNECTION

RATINGS AS PER STANDARDS

STANDARDS	EN60079-7	EN60079-7
Approvals	ATEX	ATEX-IECex
Conductor Cross Section Stranded min.	10 mm ²	10 mm ²
Conductor Cross Section Stranded max.	35 mm ²	35 mm ²
Rated Voltage	800 V	800 V
Rated Current	109 A	109 A
Tightening Torque	2.5 Nm	2.5 Nm
Operating Temperature Range	-60 to +110 °C	

CTS35UNA



connectwell
THE RIGHT CONNECTION

35 sq.mm Feed Through Terminal Blocks with Allen Screws

35 sq.mm Feed Through Terminal Blocks are the most Versatile terminals for control, Automation, Instrumentation and Power Distribution applications. A specially designed flexible foot enable easy mounting and dismounting from the Din rail with the help of screw driver. These Terminal Blocks have marker holding recesses to accept marking tags for circuit identification. Cross connection can be achieved with the aid of shorting links / sleeves & screws.

TECHNICAL DATA

Rated Voltage	1000 V
Rated Current	125 A
Tightening Torque	2.5 Nm
Housing Material	Polymide
Product Function	Feed Through
Wire Entry Orientation	Side Entry
Mounting Possibility	DIN 32/DIN 35/DIN 35-15 Rail
Screw Size	M6
Operated by	Allen Key
Rated Surge Voltage	8 KV
Pollution Degree	3

CONNECTION DATA

Conductor Cross Section Stranded min.	4 mm ²
Conductor Cross Section Stranded max.	35 mm ²
Conductor Cross Section AWG/Kcmil min	12 AWG
Conductor Cross Section AWG/Kcmil max	2 AWG
Conductor Cross Section Stranded with Ferrule/Lug min	4 mm ²
Conductor Cross Section Stranded with Ferrule/Lug max	35 mm ²
2 Conductors with same Cross Section Stranded min	4 mm ²
2 Conductor with same Cross Section Stranded max	16 mm ²
2 Conductors with same Cross Section Stranded with TWIN Ferrule/Lug min	4 mm ²
2 Conductor with same Cross Section Stranded with TWIN Ferrule/Lug max	16 mm ²
Stripping Length	15 mm
Internal Cylindrical Guage	A9

DIMENSIONS

Height with DIN 32 rail	64.3 mm
Height with DIN 35 x 15 mm rail	66.7 mm
Height with DIN 35 x 7.5 mm rail	59.2 mm
Length	50.5 mm
Width (Thickness)	16 mm

ORDERING INFORMATION

CAT. NO.	DESCRIPTION	STD. PACK
CTS35UNA	35 sq.mm Feed Through Terminal Block in Grey	50

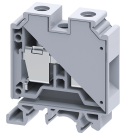
ORDERING INFORMATION

CAT. NO.	DESCRIPTION	STD. PACK
	colour	
CTS35UNAR	35 sq.mm Feed Through Terminal Block in Red colour	50
CTS35UNAY	35 sq.mm Feed Through Terminal Block in Yellow colour	50
CTS35UNABU	35 sq.mm Feed Through Terminal Block in Blue colour	50
CTS35UNABK	35 sq.mm Feed Through Terminal Block in Black colour	50
CTS35UNAGN	35 sq.mm Feed Through Terminal Block in Green colour	50

ACCESSORIES

IMAGES	CAT. NO.	DESCRIPTION	STD. PACK
	CA501-1M	Din 32 Rail unslotted 1 meter	50
	CA501-1M-S	Din 32 Rail slotted 1 meter	50
	CA501-2M	Din 32 Rail unslotted 2 meter	50
	CA501-2M-S	Din 32 Rail slotted 2 meter	50
	CA701-1M	Din 35 Rail unslotted 1 meter	50
	CA701-2M	Din 35 Rail unslotted 2 meter	50
	CA701-2M-S	Din 35 Rail slotted 2 meter	50
	CA701-1M-S	Din 35 Rail slotted 1 meter	50
	CA701-15-1M	Din 35 Rail 15 deep unslotted 1 meter	50
	CA701-15-1M-S	Din 35 Rail 15 deep slotted 1 meter	50
	CA701-15-2M	Din 35 Rail 15 deep unslotted 2 meter	50
	CA701-15-2M-S	Din 35 Rail 15 deep slotted 2 meter	50
	CA702	End Clamp in Polyamide 66 suitable for Din 32 / Din 35 / Din 35-15 Rails	50
	CA802	End Clamp in Polyamide suitable for Din 35 / Din 35-15 Rails	50
	PP35UN	Partition Plate in Grey colour suitable for CTS35UN Terminal Block	50

CTS35UNA



connectwell
THE RIGHT CONNECTION

ACCESSORIES

IMAGES	CAT. NO.	DESCRIPTION	STD. PACK
	CA771/2	Pre assembled Shorting Link for 2 way shorting	50
	CA771/3	Pre assembled Shorting Link for 3 way shorting	20
	CA771/4	Pre assembled Shorting Link for 4 way shorting	20
	CA771/10	Pre assembled Shorting Link for 10 way shorting	10
	CA781/2	Insulated Pre assembled Shorting Link for 2 way shorting	50
	CA781/3	Insulated Pre assembled Shorting Link for 3 way shorting	20
	CA781/4	Insulated Pre assembled Shorting Link for 4 way shorting	20
	CA781/10	Insulated Pre assembled Shorting Link for 10 way shorting	10
	CA703/10	Permanent Shorting Links for 2 way shorting	100
	CA704/10	Permanent Shorting Links for 3 way shorting	100
	CA705/10	Permanent Shorting Links for 4 way shorting	100
	CA770/10	Permanent Shorting Links for 10 way shorting	100
	CA707/S/Q/2	Shorting Sleeve and Screw suitable for CTS25UN / CTS35UN / CTS35UNA Terminal Blocks.	100
	CA509/K16	Marking Tag Blank suitable for CTS35UNA / CGT35U Terminal Blocks	100
	CA707/TS/06	Test Socket Suitable for CTS25UN / CTS35UN / CTS35UNA Terminal Blocks	100
	SCS1/5.5	Electricians Screwdriver for slotted screws	10

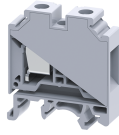
APPROVALS



RATINGS AS PER STANDARDS

STANDARDS	IEC/EN60947-1
Approvals	CE
Conductor Cross Section Stranded min.	4 mm ²
Conductor Cross Section Stranded max.	35 mm ²
Rated Voltage	1000 V
Rated Current	125 A
Tightening Torque	2.5 Nm

CTS16U



16 sq.mm Standard Feed Through Terminal Blocks

16 sq.mm Feed Through Terminal Blocks are the most Versatile terminals for control, Automation, Instrumentation and Power Distribution applications. A specially designed flexible foot enable easy mounting and dismounting from the Din rail with the help of screw driver. These Terminal Blocks have marker holding recesses to accept marking tags for circuit identification. Cross connection can be achieved with the aid of shorting links / sleeves & screws.

TECHNICAL DATA

Rated Voltage	1000 V
Rated Current	76 A
Tightening Torque	1.2 Nm
Housing Material	Polymide
Product Function	Feed Through
Wire Entry Orientation	Side Entry
Mounting Possibility	DIN 32/DIN 35/DIN 35-15 Rail
Screw Size	M4
Operated by	Screwdriver
Rated Surge Voltage	8 KV
Pollution Degree	3

CONNECTION DATA

Conductor Cross Section Stranded min.	0.2 mm ²
Conductor Cross Section Stranded max.	16 mm ²
Conductor Cross Section AWG/Kcmil min	20 AWG
Conductor Cross Section AWG/Kcmil max	4 AWG
Conductor Cross Section Stranded with Ferrule/Lug min	0.2 mm ²
Conductor Cross Section Stranded with Ferrule/Lug max	16 mm ²
2 Conductors with same Cross Section Stranded min	0.2 mm ²
2 Conductor with same Cross Section Stranded max	10 mm ²
2 Conductors with same Cross Section Stranded with TWIN Ferrule/Lug min	0.2 mm ²
2 Conductor with same Cross Section Stranded with TWIN Ferrule/Lug max	10 mm ²
Stripping Length	12 mm
Internal Cylindrical Guage	A7

DIMENSIONS

Height with DIN 32 rail	52.8 mm
Height with DIN 35 x 15 mm rail	55.5 mm
Height with DIN 35 x 7.5 mm rail	47.8 mm
Length	43 mm
Width (Thickness)	12 mm

ORDERING INFORMATION

CAT. NO.	DESCRIPTION	STD. PACK
CTS16U	16 sq.mm Feed Through Terminal Block in Grey	50

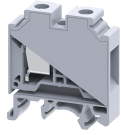
ORDERING INFORMATION

CAT. NO.	DESCRIPTION	STD. PACK
	colour	
CTS16UR	16 sq.mm Feed Through Terminal Block in Red colour	50
CTS16UY	16 sq.mm Feed Through Terminal Block in Yellow colour	50
CTS16UBU	16 sq.mm Feed Through Terminal Block in Blue colour	50
CTS16UGN	16 sq.mm Feed Through Terminal Block in Green colour	50
CTS16UBK	16 sq.mm Feed Through Terminal Block in Black colour	50

ACCESSORIES

IMAGES	CAT. NO.	DESCRIPTION	STD. PACK
	CA501-1M	Din 32 Rail unslotted 1 meter	50
	CA501-1M-S	Din 32 Rail slotted 1 meter	50
	CA501-2M	Din 32 Rail unslotted 2 meter	50
	CA501-2M-S	Din 32 Rail slotted 2 meter	50
	CA701-1M	Din 35 Rail unslotted 1 meter	50
	CA701-2M	Din 35 Rail unslotted 2 meter	50
	CA701-2M-S	Din 35 Rail slotted 2 meter	50
	CA701-1M-S	Din 35 Rail slotted 1 meter	50
	CA701-15-1M	Din 35 Rail 15 deep unslotted 1 meter	50
	CA701-15-1M-S	Din 35 Rail 15 deep slotted 1 meter	50
	CA701-15-2M	Din 35 Rail 15 deep unslotted 2 meter	50
	CA701-15-2M-S	Din 35 Rail 15 deep slotted 2 meter	50
	CA702	End Clamp in Polyamide 66 suitable for Din 32 / Din 35 / Din 35-15 Rails	50
	CA802	End Clamp in Polyamide suitable for Din 35 / Din 35-15 Rails	50
	SP6/10U	Separator Plate in Grey colour	100

CTS16U



connectwell
THE RIGHT CONNECTION

ACCESSORIES

IMAGES	CAT. NO.	DESCRIPTION	STD. PACK
	CA751/2	Pre assembled Shorting Link for 2 way shorting.	50
	CA751/3	Pre assembled Shorting Link for 3 way shorting.	50
	CA751/4	Pre assembled Shorting Link for 4 way shorting.	50
	CA751/10	Pre assembled Shorting Link for 10 way shorting.	10
	CA761/2	Insulated Pre assembled Shorting Link for 2 way shorting	50
	CA761/3	Insulated Pre assembled Shorting Link for 3 way shorting	50
	CA761/4	Insulated Pre assembled Shorting Link for 4 way shorting	50
	CA761/10	Insulated Pre assembled Shorting Link for 10 way shorting	10
	CA703/8	Permanent Shorting Link for 2 way shorting	100
	CA704/8	Permanent Shorting Link for 3 way shorting	100
	CA705/8	Permanent Shorting Link for 4 way shorting	100
	CA739/10	Permanent Shorting Link for 10 way shorting	100
	CA707/S/Q/1	Shorting Sleeve and Screw	100
	CA509/K12	Marking Tag Blank suitable for CTS16U / CTS25UN / CGT16N / CDB25 / CMDDB25 / CSC16T / CSCG16T / CY16 / CYG16 Terminal Blocks	100
	CA707/TS/05	Test Socket suitable for CTS6U / CTS10U Terminal Blocks	100
	SCS1/5.5	Electricians Screwdriver for slotted screws	10

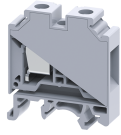
APPROVALS



RATINGS AS PER STANDARDS

STANDARDS	UL 1059	CSA C.22.2 No:158	DIN EN60947-7-1
Approvals	UL	CSA	VDE
Conductor Cross Section Stranded min.	20 AWG	22 AWG	2.5 mm ²
Conductor Cross Section Stranded max.	4 AWG	6 AWG	16 mm ²
Rated Voltage	600 V	600 V	800 V
Rated Current	85 A	70 A	76 A
Tightening Torque	14 lb-in	14 lb-in	2 Nm

CTS16U

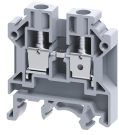


connectwell
THE RIGHT CONNECTION

RATINGS AS PER STANDARDS

STANDARDS	IEC/EN60947-7-1	EN60079-7	EN60079-7
Approvals	CE	ATEX	ATEX-IECex
Conductor Cross Section Stranded min.	0.2 mm ²	2.5 mm ²	2.5 mm ²
Conductor Cross Section Stranded max.	16 mm ²	16 mm ²	16 mm ²
Rated Voltage	1000 V	690 V	690 V
Rated Current	76 A	66 A	66 A
Tightening Torque	1.2 Nm	2 Nm	2 Nm
Operating Temperature Range		-40 to +85 °C	

CTS6U



connectwell
THE RIGHT CONNECTION

6 sq.mm Standard Feed Through Terminal Blocks

6 sq.mm Feed Through Terminal Blocks are the most Versatile terminals for control, Automation, Instrumentation and Power Distribution applications. A specially designed flexible foot enable easy mounting and dismounting from the Din rail with the help of screw driver. These Terminal Blocks have marker holding recesses to accept marking tags for circuit identification. Cross connection can be achieved with the aid of shorting links / sleeves & screws.

TECHNICAL DATA

Rated Voltage	1000 V
Rated Current	41 A
Tightening Torque	0.8 Nm
Housing Material	Polymide
Product Function	Feed Through
Wire Entry Orientation	Side Entry
Mounting Possibility	DIN 32/DIN 35/DIN 35-15 Rail
Screw Size	M3.5
Operated by	Screwdriver
Rated Surge Voltage	8 KV
Pollution Degree	3

CONNECTION DATA

Conductor Cross Section Stranded min.	0.5 mm ²
Conductor Cross Section Stranded max.	6 mm ²
Conductor Cross Section AWG/Kcmil min	22 AWG
Conductor Cross Section AWG/Kcmil max	8 AWG
Conductor Cross Section Stranded with Ferrule/Lug min	0.5 mm ²
Conductor Cross Section Stranded with Ferrule/Lug max	6 mm ²
2 Conductors with same Cross Section Stranded min	0.5 mm ²
2 Conductor with same Cross Section Stranded max	4 mm ²
Conductor Cross Section Solid min	0.5 mm ²
Conductor Cross Section Solid max	6 mm ²
2 Conductors with same Cross Section Stranded with TWIN Ferrule/Lug min	0.5 mm ²
2 Conductor with same Cross Section Stranded with TWIN Ferrule/Lug max	4 mm ²
Stripping Length	9 mm
Internal Cylindrical Guage	A5

DIMENSIONS

Height with DIN 32 rail	52.8 mm
Height with DIN 35 x 15 mm rail	55.5 mm
Height with DIN 35 x 7.5 mm rail	47.8 mm
Length	43 mm
Width (Thickness)	8 mm

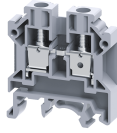
ORDERING INFORMATION

CAT. NO.	DESCRIPTION	STD. PACK
CTS6U	6 sq.mm Feed Through Terminal block in Grey colour	100
CTS6UR	6 sq.mm Feed Through Terminal block in Red colour	100
CTS6UY	6 sq.mm Feed Through Terminal block in Yellow colour	100
CTS6UBU	6 sq.mm Feed Through Terminal block in Blue colour	100
CTS6UGN	6 sq.mm Feed Through Terminal block in Green colour	100
CTS6UBK	6 sq.mm Feed Through Terminal block in Black colour	100
CTS6UO	6 sq.mm Feed Through Terminal block in Orange colour	100
CTS6UW	6 sq.mm Feed Through Terminal block in White colour	100
CTS6UBG	6 sq.mm Feed Through Terminal block in Beige colour	100

ACCESSORIES

IMAGES	CAT. NO.	DESCRIPTION	STD. PACK
	CA501-1M	Din 32 Rail unslotted 1 meter	50
	CA501-1M-S	Din 32 Rail slotted 1 meter	50
	CA501-2M	Din 32 Rail unslotted 2 meter	50
	CA501-2M-S	Din 32 Rail slotted 2 meter	50
	CA701-1M	Din 35 Rail unslotted 1 meter	50
	CA701-2M	Din 35 Rail unslotted 2 meter	50
	CA701-2M-S	Din 35 Rail slotted 2 meter	50
	CA701-1M-S	Din 35 Rail slotted 1 meter	50
	CA701-15-1M	Din 35 Rail 15 deep unslotted 1 meter	50
	CA701-15-1M-S	Din 35 Rail 15 deep slotted 1 meter	50
	CA701-15-2M	Din 35 Rail 15 deep unslotted 2 meter	50
	CA701-15-2M-S	Din 35 Rail 15 deep slotted 2 meter	50
	CA702	End Clamp in Polyamide 66 suitable for Din 32 / Din 35 / Din 35-15 Rails	50
	CA802	End Clamp in Polyamide suitable for Din 35 / Din 35-15 Rails	50

CTS6U



connectwell
THE RIGHT CONNECTION

ACCESSORIES

IMAGES	CAT. NO.	DESCRIPTION	STD. PACK
	EP6/10U	End Plate in Grey colour	50
	EP6/10UBU	End Plate in Blue colour	50
	EP6/10UY	End Plate in Yellow colour	50

	PP6/10U	Partition Plate in Grey colour suitable for CTS6U / CTS10U Terminal Block	50
--	---------	---	----

	SP6/10U	Separator Plate in Grey colour	100
--	---------	--------------------------------	-----

	CA723/2	Pre Assembled Shorting Link assemblies with 2 poles	100
	CA723/3	Pre Assembled Shorting Links assemblies with 3 poles	50
	CA723/4	Pre assembled Shorting Link assemblies with 4 poles	50
	CA723/5	Pre assembled Shorting Link assemblies with 5 poles	50
	CA723/6	Pre assembled Shorting Link assemblies with 6 poles	10
	CA723/7	Pre assembled Shorting Link assemblies with 7 poles	10
	CA723/10	Pre Assembled Shorting Links assemblies with 10 poles	10

	CA743/2	Insulated Pre assembled Shorting Link for 2 way shorting	100
	CA743/3	Insulated Pre assembled Shorting Link for 3 way shorting	50
	CA743/4	Insulated Pre assembled Shorting Link for 4 way shorting	50
	CA743/5	Insulated Pre assembled Shorting Link for 5 way shorting	50
	CA743/6	Insulated Pre assembled Shorting Link for 6 way shorting	10
	CA743/7	Insulated Pre assembled Shorting Link for 7 way shorting	10
	CA743/10	Insulated Pre assembled Shorting Link for 10 way shorting	10

	CA710/2	External Comb Type Shorting Link available in 2 Pole	100
	CA710/3	External Comb Type Shorting Link available in 3 Pole	50
	CA710/4	External Comb Type Shorting Link available in 4 Pole	50
	CA710/10	External Comb Type Shorting Link available in 10 Pole	20

	CA703/2	Permanent Shorting Link for 2 way shorting	100
	CA704/2	Permanent Shorting Link for 3 way shorting	100
	CA704/2	Permanent Shorting Link for 3 way shorting	100
	CA734/10	Permanent Shorting Link for 10 way shorting	100

ACCESSORIES

IMAGES	CAT. NO.	DESCRIPTION	STD. PACK
	CA707/S/Q/1	Shorting Sleeve and Screw	100

	CA706/2	Removable Shorting link suitable for CTS6U	100
--	---------	--	-----

	CA707/L/Q/1	Long Sleeves & Screws	100
--	-------------	-----------------------	-----

	CA509/K/8	Marking Tag with Vertical printing.	100
--	-----------	-------------------------------------	-----

	SWL6	Warning label suitable for 8mm wide terminal block	50
--	------	--	----

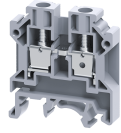
	CA707/TS/05	Test Socket suitable for CTS6U / CTS10U Terminal Blocks	100
--	-------------	---	-----

	SCS0.8/4	Electricians Screwdriver for slotted screws	10
--	----------	---	----

APPROVALS



CTS6U



connectwell
THE RIGHT CONNECTION

RATINGS AS PER STANDARDS

STANDARDS	UL 1059	CSA C.22.2 No:158	DIN EN60947-7-1
Approvals	UL	CSA	VDE
Conductor Cross Section Stranded min.	22 AWG	22 AWG	1.5 mm ²
Conductor Cross Section Stranded max.	8 AWG	8 AWG	6 mm ²
Rated Voltage	600 V	600 V	800 V
Rated Current	50 A	50 A	41 A
Tightening Torque	14 lb-in	14 lb-in	0.8 Nm
STANDARDS	IEC/EN60947-7-1	EN60079-7	IEC 60079-0 & IEC 60079-7
Approvals	CE	ATEX	AEx
Conductor Cross Section Stranded min.	0.5 mm ²	1.5 mm ²	22 AWG
Conductor Cross Section Stranded max.	6 mm ²	6 mm ²	8 AWG
Rated Voltage	1000 V	690 V	600 V
Rated Current	41 A	36 A	50 A
Tightening Torque	0.8 Nm	0.8 Nm	14 lb-in
Operating Temperature Range		-40 to +85 °C	
STANDARDS	EN60079-7		
Approvals	ATEX-IECex		
Conductor Cross Section Stranded min.	1.5 mm ²		
Conductor Cross Section Stranded max.	6 mm ²		
Rated Voltage	690 V		
Rated Current	36 A		
Tightening Torque	0.8 Nm		

25 sq.mm Standard Feed Through Terminal Blocks

25 sq.mm Feed Through Terminal Blocks are the most Versatile terminals for control, Automation, Instrumentation and Power Distribution applications. A specially designed flexible foot enable easy mounting and dismounting from the Din rail with the help of screw driver. These Terminal Blocks have marker holding recesses to accept marking tags for circuit identification. Cross connection can be achieved with the aid of shorting links / sleeves & screws.

TECHNICAL DATA

Rated Voltage	1000 V
Rated Current	101 A
Tightening Torque	2 Nm
Housing Material	Polymide
Product Function	Feed Through
Wire Entry Orientation	Side Entry
Mounting Possibility	DIN 32/DIN 35/DIN 35-15 Rail
Screw Size	M5
Operated by	Screwdriver
Rated Surge Voltage	8 KV
Pollution Degree	3

CONNECTION DATA

Conductor Cross Section Stranded min.	4 mm ²
Conductor Cross Section Stranded max.	25 mm ²
Conductor Cross Section AWG/Kcmil min	12 AWG
Conductor Cross Section AWG/Kcmil max	4 AWG
Conductor Cross Section Stranded with Ferrule/Lug min	4 mm ²
Conductor Cross Section Stranded with Ferrule/Lug max	25 mm ²
2 Conductors with same Cross Section Stranded min	4 mm ²
2 Conductor with same Cross Section Stranded max	16 mm ²
2 Conductors with same Cross Section Stranded with TWIN Ferrule/Lug min	4 mm ²
2 Conductor with same Cross Section Stranded with TWIN Ferrule/Lug max	10 mm ²
Stripping Length	18 mm
Internal Cylindrical Guage	A8

DIMENSIONS

Height with DIN 32 rail	62.3 mm
Height with DIN 35 x 15 mm rail	64.7 mm
Height with DIN 35 x 7.5 mm rail	57.2 mm
Length	49 mm
Width (Thickness)	12 mm

ORDERING INFORMATION

CAT. NO.	DESCRIPTION	STD. PACK
CTS25UN	25 sq.mm Feed Through Terminal Block in Grey	50

ORDERING INFORMATION








CAT. NO.	DESCRIPTION	STD. PACK
	colour	
CTS25UNR	25 sq.mm Feed Through Terminal Block in Red colour	50
CTS25UNY	25 sq.mm Feed Through Terminal Block in Yellow colour	50
CTS25UNBU	25 sq.mm Feed Through Terminal Block in Blue colour	50
CTS25UNGN	25 sq.mm Feed Through Terminal Block in Green colour	50
CTS25UNBK	25 sq.mm Feed Through Terminal Block in Black colour	50

ACCESSORIES

IMAGES	CAT. NO.	DESCRIPTION	STD. PACK
	CA501-1M	Din 32 Rail unslotted 1 meter	50
	CA501-1M-S	Din 32 Rail slotted 1 meter	50
	CA501-2M	Din 32 Rail unslotted 2 meter	50
	CA501-2M-S	Din 32 Rail slotted 2 meter	50
	CA701-1M	Din 35 Rail unslotted 1 meter	50
	CA701-2M	Din 35 Rail unslotted 2 meter	50
	CA701-2M-S	Din 35 Rail slotted 2 meter	50
	CA701-1M-S	Din 35 Rail slotted 1 meter	50
	CA701-15-1M	Din 35 Rail 15 deep unslotted 1 meter	50
	CA701-15-1M-S	Din 35 Rail 15 deep slotted 1 meter	50
	CA701-15-2M	Din 35 Rail 15 deep unslotted 2 meter	50
	CA701-15-2M-S	Din 35 Rail 15 deep slotted 2 meter	50
	CA702	End Clamp in Polyamide 66 suitable for Din 32 / Din 35 / Din 35-15 Rails	50
	CA802	End Clamp in Polyamide suitable for Din 35 / Din 35-15 Rails	50
	PP25UN	Partition Plate in Grey colour suitable for CTS25UN Terminal Block	50

Could not find file 'C:\inetpub\wwwroot\Connectwell.Website\media\OrderInfolimages\CTS25UN.gif'.

ACCESSORIES

IMAGES	CAT. NO.	DESCRIPTION	STD. PACK
	CA725/2	Pre assembled Shorting Link for 2 way shorting	50
	CA725/3	Pre assembled Shorting Link for 3 way shorting	20
	CA725/4	Pre assembled Shorting Link for 4 way shorting	20
	CA725/10	Pre assembled Shorting Link for 10 way shorting	10
	CA745/2	Insulated Pre assembled Shorting Link for 2 way shorting	50
	CA745/3	Insulated Pre assembled Shorting Link for 3 way shorting	20
	CA745/4	Insulated Pre assembled Shorting Link for 4 way shorting	20
	CA745/10	Insulated Pre assembled Shorting Link for 10 way shorting	10
	CA703/4	Permanent Shorting Link for 2 way shorting	100
	CA704/4	Permanent Shorting Link for 3 way shorting	100
	CA705/4	Permanent Shorting Link for 4 way shorting	100
	CA705/4	Permanent Shorting Link for 4 way shorting	100
	CA707/S/Q/2	Shorting Sleeve and Screw suitable for CTS25UN / CTS35UN / CTS35UNA Terminal Blocks.	100
	CA509/K12	Marking Tag Blank suitable for CTS16U / CTS25UN / CGT16N / CDB25 / CMDB25 / CSC16T / CSCG16T / CY16 / CYG16 Terminal Blocks	100
	CA707/TS/06	Test Socket Suitable for CTS25UN / CTS35UN / CTS35UNA Terminal Blocks	100
	SCS1/5.5	Electricians Screwdriver for slotted screws	10

RATINGS AS PER STANDARDS

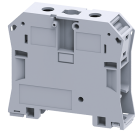
STANDARDS	UL 1059	IEC/EN60947-7-1	CSA C.22.2 No:158
Approvals	UL	CE	CSA
Conductor Cross Section Stranded min.	12 AWG	4 mm ²	12 AWG
Conductor Cross Section Stranded max.	4 AWG	25 mm ²	4 AWG
Rated Voltage	600 V	1000 V	600 V
Rated Current	85 A	101 A	85 A
Tightening Torque	18 lb-in	2 Nm	18 Nm

Could not find file 'C:\inetpub\wwwroot\Connectwell.Website\media\OrderInfolmages\CTS25UN.gif'.

RATINGS AS PER STANDARDS

STANDARDS	EN60079-7	EN60079-7
Approvals	ATEX	ATEX-IECex
Conductor Cross Section Stranded min.	6 mm ²	6 mm ²
Conductor Cross Section Stranded max.	25 mm ²	25 mm ²
Rated Voltage	690 V	690 V
Rated Current	88 A	88 A
Tightening Torque	2 Nm	2 Nm
Operating Temperature Range	-40 to +85 °C	

CTS50/70NA



50/70 sq.mm Feed Through Terminal Blocks with Allen Screws

70 sq.mm Feed Through Terminal Blocks are the most Versatile terminals for control, Automation, Instrumentation and Power Distribution applications. A specially designed flexible foot enable easy mounting and dismounting from the Din rail with the help of screw driver. These Terminal Blocks have marker holding recesses to accept marking tags for circuit identification. Cross connection can be achieved with the aid of shorting links / sleeves & screws.

TECHNICAL DATA

Rated Voltage	1000 V
Rated Current	192 A
Tightening Torque	3 Nm
Housing Material	Polymide
Product Function	Feed Through
Wire Entry Orientation	Side Entry
Mounting Possibility	DIN 35/DIN 35-15 Rail
Screw Size	M6
Operated by	Allen Key
Rated Surge Voltage	8 KV
Pollution Degree	3

CONNECTION DATA

Conductor Cross Section Stranded min.	10 mm ²
Conductor Cross Section Stranded max.	70 mm ²
Conductor Cross Section AWG/Kcmil min	8 AWG
Conductor Cross Section AWG/Kcmil max	2/0 AWG
Conductor Cross Section Stranded with Ferrule/Lug min	10 mm ²
Conductor Cross Section Stranded with Ferrule/Lug max	70 mm ²
2 Conductors with same Cross Section Stranded min	10 mm ²
2 Conductor with same Cross Section Stranded max	35 mm ²
Stripping Length	22 mm
Internal Cylindrical Gauge	A10

DIMENSIONS

Height with DIN 35 x 15 mm rail	78.1 mm
Height with DIN 35 x 7.5 mm rail	71.1 mm
Length	77.3 mm
Width (Thickness)	20.5 mm

ORDERING INFORMATION

CAT. NO.	DESCRIPTION	STD. PACK
CTS50/70NA	70 sq.mm Feed Through Terminal Block in Grey colour	20
CTS50/70NAR	70 sq.mm Feed Through Terminal Block in Red colour	20
CTS50/70NAY	70 sq.mm Feed Through Terminal Block in Yellow colour	20

ORDERING INFORMATION

CAT. NO.	DESCRIPTION	STD. PACK
CTS50/70NABU	70 sq.mm Feed Through Terminal Block in Blue colour	20
CTS50/70NABK	70 sq.mm Feed Through Terminal Block in Black colour	20
CTS50/70NAGN	70 sq.mm Feed Through Terminal Block in Green colour	20

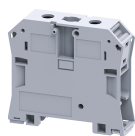
ACCESSORIES

IMAGES	CAT. NO.	DESCRIPTION	STD. PACK
	CA701-1M	Din 35 Rail unslotted 1 meter	50
	CA701-2M	Din 35 Rail unslotted 2 meter	50
	CA701-2M-S	Din 35 Rail slotted 2 meter	50
	CA701-1M-S	Din 35 Rail slotted 1 meter	50
	CA701-15-1M	Din 35 Rail 15 deep unslotted 1 meter	50
	CA701-15-1M-S	Din 35 Rail 15 deep slotted 1 meter	50
	CA701-15-2M	Din 35 Rail 15 deep unslotted 2 meter	50
	CA701-15-2M-S	Din 35 Rail 15 deep slotted 2 meter	50
	CA102	End Clamp in Polyamide suitable for Din32 / Din35 / Din35-15 Rails	50
	CA202	End Clamp in Polyamide suitable for Din 35 / Din 35-15 Rails	25
	CA628/2	Pre Assembled Shorting Link assemblies with 2 poles	10
	CA628/3	Pre Assembled Shorting Link assemblies with 3 poles	10
	AUX6	Auxiliary Terminal Block in Polyamide suitable for CTS50/70N / CTS95/120N	10
	CA509/K16	Marking Tag Blank suitable for CTS35UNA / CGT35U Terminal Blocks	100

APPROVALS



CTS50/70NA



connectwell
THE RIGHT CONNECTION

RATINGS AS PER STANDARDS

STANDARDS	IEC/EN60947-7-1	UL 1059	CSA C.22.2 No:158
Approvals	CE	UL	CSA
Conductor Cross Section Stranded min.	10 mm ²	8 AWG	8 AWG
Conductor Cross Section Stranded max.	70 mm ²	2/0 AWG	2/0 AWG
Rated Voltage	1000 V	1000 V	1000 V
Rated Current	192 A	175 A	175 A
Tightening Torque	3 Nm	38 lb-in	38 lb-in

CTS95/120N



connectwell
THE RIGHT CONNECTION

95/120 sq.mm Feed Through Terminal Blocks with Allen Screws

CTS95/120N Feed Through Terminal Blocks are the most Versatile terminals for control, Automation, Instrumentation and Power Distribution applications. A specially designed flexible foot enable easy mounting and dismounting from the Din rail with the help of screw driver. These Terminal Blocks have marker holding recesses to accept marking tags for circuit identification. Cross connection can be achieved with the aid of shorting links / sleeves & screws.

TECHNICAL DATA

Rated Voltage	1000 V
Rated Current	269 A
Tightening Torque	6 Nm
Housing Material	Polymide
Product Function	Feed Through
Wire Entry Orientation	Side Entry
Mounting Possibility	DIN 35/DIN 35-15 Rail
Screw Size	M8
Operated by	Allen Key
Rated Surge Voltage	8 KV
Pollution Degree	1

CONNECTION DATA

Conductor Cross Section Stranded min.	25 mm ²
Conductor Cross Section Stranded max.	120 mm ²
Conductor Cross Section AWG/Kcmil min	2 AWG
Conductor Cross Section AWG/Kcmil max	250 kcmil
Conductor Cross Section Stranded with Ferrule/Lug min	25 mm ²
Conductor Cross Section Stranded with Ferrule/Lug max	120 mm ²
2 Conductors with same Cross Section Stranded min	25 mm ²
2 Conductor with same Cross Section Stranded max	70 mm ²
Stripping Length	24 mm
Internal Cylindrical Guage	A12

DIMENSIONS

Height with DIN 35 x 15 mm rail	90.5 mm
Height with DIN 35 x 7.5 mm rail	83 mm
Length	84.5 mm
Width (Thickness)	27 mm

ORDERING INFORMATION

CAT. NO.	DESCRIPTION	STD. PACK
CTS95/120N	120 sq.mm Feed Through Terminal Block in Grey colour	10
CTS95/120NR	120 sq.mm Feed Through Terminal Block in Red colour	10
CTS95/120NY	120 sq.mm Feed Through Terminal Block in Yellow colour	10

ORDERING INFORMATION

CAT. NO.	DESCRIPTION	STD. PACK
CTS95/120NBU	120 sq.mm Feed Through Terminal Block in Blue colour	10
CTS95/120NBK	120 sq.mm Feed Through Terminal Block in Black colour	10
CTS95/120NGN	120 sq.mm Feed Through Terminal Block in Green colour	10

ACCESSORIES

IMAGES	CAT. NO.	DESCRIPTION	STD. PACK
	CA701-1M	Din 35 Rail unslotted 1 meter	50
	CA701-2M	Din 35 Rail unslotted 2 meter	50
	CA701-2M-S	Din 35 Rail slotted 2 meter	50
	CA701-1M-S	Din 35 Rail slotted 1 meter	50
	CA701-15-1M	Din 35 Rail 15 deep unslotted 1 meter	50
	CA701-15-1M-S	Din 35 Rail 15 deep slotted 1 meter	50
	CA701-15-2M	Din 35 Rail 15 deep unslotted 2 meter	50
	CA701-15-2M-S	Din 35 Rail 15 deep slotted 2 meter	50
	CA102	End Clamp in Polyamide suitable for Din32 / Din35 / Din35-15 Rails	50
	CA202	End Clamp in Polyamide suitable for Din 35 / Din 35-15 Rails	25
	CA629/2	Pre Assembled Shorting Link assemblies with 2 poles	10
	CA629/3	Pre Assembled Shorting Link assemblies with 3 poles	10
	AUX6	Auxiliary Terminal Block in Polyamide suitable for CTS50/70N / CTS95/120N	10
	CA509/K16	Marking Tag Blank suitable for CTS35UNA / CGT35U Terminal Blocks	100

APPROVALS



CTS95/120N

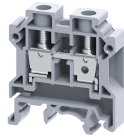


connectwell
THE RIGHT CONNECTION

RATINGS AS PER STANDARDS

STANDARDS	UL 1059	IEC/EN60947-7-1	CSA C.22.2 No:158
Approvals	UL	CE	CSA
Conductor Cross Section Stranded min.	2 AWG	25 mm ²	2 AWG
Conductor Cross Section Stranded max.	250 mm ²	120 mm ²	250 AWG
Rated Voltage	1000 V	1000 V	1000 V
Rated Current	240 A	269 A	240 A
Tightening Torque	90 lb-in	6 Nm	90 lb-in

CTS10U



10 sq. mm Standard Feed Through Terminal Blocks

10 sq.mm Feed Through Terminal Blocks are the most Versatile terminals for control, Automation, Instrumentation and Power Distribution applications. A specially designed flexible foot enable easy mounting and dismounting from the Din rail with the help of screw driver. These Terminal Blocks have marker holding recesses to accept marking tags for circuit identification. Cross connection can be achieved with the aid of shorting links / sleeves & screws.

TECHNICAL DATA

Rated Voltage	1000 V
Rated Current	57 A
Tightening Torque	1.2 Nm
Housing Material	Polyamide
Product Function	Feed Through
Wire Entry Orientation	Side Entry
Mounting Possibility	DIN 32/DIN 35/DIN 35-15 Rail
Screw Size	M4
Operated by	Screwdriver
Rated Surge Voltage	8 KV
Pollution Degree	3

CONNECTION DATA

Conductor Cross Section Stranded min.	0.5 mm ²
Conductor Cross Section Stranded max.	10 mm ²
Conductor Cross Section AWG/Kcmil min	16 AWG
Conductor Cross Section AWG/Kcmil max	6 AWG
Conductor Cross Section Stranded with Ferrule/Lug min	0.5 mm ²
Conductor Cross Section Stranded with Ferrule/Lug max	10 mm ²
2 Conductors with same Cross Section Stranded min	0.5 mm ²
2 Conductor with same Cross Section Stranded max	6 mm ²
Conductor Cross Section Solid min	0.5 mm ²
Conductor Cross Section Solid max	16 mm ²
2 Conductors with same Cross Section Stranded with TWIN Ferrule/Lug min	0.5 mm ²
2 Conductor with same Cross Section Stranded with TWIN Ferrule/Lug max	6 mm ²
Stripping Length	11 mm
Internal Cylindrical Guage	A6

DIMENSIONS

Height with DIN 32 rail	52.8 mm
Height with DIN 35 x 15 mm rail	55.5 mm
Height with DIN 35 x 7.5 mm rail	47.8 mm
Length	43 mm
Width (Thickness)	10 mm

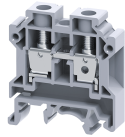
ORDERING INFORMATION

CAT. NO.	DESCRIPTION	STD. PACK
CTS10U	10 sq.mm Feed Through Terminal Block in Grey colour	100
CTS10UR	10 sq.mm Feed Through Terminal Block in Red colour	100
CTS10UY	10 sq.mm Feed Through Terminal Block in Yellow colour	100
CTS10UBU	10 sq.mm Feed Through Terminal Block in Blue colour	100
CTS10UGN	10 sq.mm Feed Through Terminal Block in Green colour	100
CTS10UBK	10 sq.mm Feed Through Terminal Block in Black colour	100
CTS10UO	10 sq.mm Feed Through Terminal Block in Orange colour	100
CTS10UW	10 sq.mm Feed Through Terminal Block in White colour	100
CTS10UBG	10 sq.mm Feed Through Terminal Block in Beige colour	100

ACCESSORIES

IMAGES	CAT. NO.	DESCRIPTION	STD. PACK
	CA501-1M	Din 32 Rail unslotted 1 meter	50
	CA501-1M-S	Din 32 Rail slotted 1 meter	50
	CA501-2M	Din 32 Rail unslotted 2 meter	50
	CA501-2M-S	Din 32 Rail slotted 2 meter	50
	CA701-1M	Din 35 Rail unslotted 1 meter	50
	CA701-2M	Din 35 Rail unslotted 2 meter	50
	CA701-2M-S	Din 35 Rail slotted 2 meter	50
	CA701-1M-S	Din 35 Rail slotted 1 meter	50
	CA701-15-1M	Din 35 Rail 15 deep unslotted 1 meter	50
	CA701-15-1M-S	Din 35 Rail 15 deep slotted 1 meter	50
	CA701-15-2M	Din 35 Rail 15 deep unslotted 2 meter	50
	CA701-15-2M-S	Din 35 Rail 15 deep slotted 2 meter	50
	CA702	End Clamp in Polyamide 66 suitable for Din 32 / Din 35 / Din 35-15 Rails	50
	CA802	End Clamp in Polyamide suitable for Din 35 / Din 35-15 Rails	50

CTS10U



connectwell
THE RIGHT CONNECTION

ACCESSORIES

IMAGES	CAT. NO.	DESCRIPTION	STD. PACK
	EP6/10U	End Plate in Grey colour	50
	EP6/10UBU	End Plate in Blue colour	50
	EP6/10UY	End Plate in Yellow colour	50
	PP6/10U	Partition Plate in Grey colour suitable for CTS6U / CTS10U Terminal Block	50
	SP6/10U	Separator Plate in Grey colour	100
	CA724/2	Pre Assembled Shorting Link assemblies with 2 poles	100
	CA724/3	Pre Assembled Shorting Links assemblies with 3 poles	50
	CA724/4	Pre assembled Shorting Link assemblies with 4 poles	50
	CA724/10	Pre Assembled Shorting Links assemblies with 10 poles	100
	CA724/9	Pre Assembled Shorting Links assemblies with 9 poles	100
	CA744/2	Insulated Pre assembled Shorting Link for 2 way shorting	100
	CA744/3	Insulated Pre assembled Shorting Link for 3 way shorting	50
	CA744/4	Insulated Pre assembled Shorting Link for 4 way shorting	50
	CA744/10	Insulated Pre assembled Shorting Link for 10 way shorting	10
	CA718/2	External Comb Type Shorting Link available in 2 Pole	100
	CA718/3	External Comb Type Shorting Link available in 3 Pole	50
	CA718/4	External Comb Type Shorting Link available in 4 Pole	50
	CA718/10	External Comb Type Shorting Link available in 10 Pole	20
	CA703/3	Permanent Shorting Link for 2 way shorting	100
	CA704/3	Permanent Shorting Link for 3 way shorting	100
	CA705/3	Permanent Shorting Link for 4 way shorting	100
	CA734/10	Permanent Shorting Link for 10 way shorting	100
	CA707/S/Q/1	Shorting Sleeve and Screw	100
	CA706/3	Removable Shorting link suitable for CTS10U	100
	CA707/L/Q/1	Long Sleeves & Screws	100

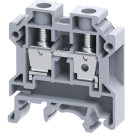
ACCESSORIES

IMAGES	CAT. NO.	DESCRIPTION	STD. PACK
	CA509/K10	Marking Tag Blank suitable for CTS10U / CGT10U / CGT10N / CHV10U / CTS10USC / STH4 / STH4DT / STH4DTSH / CSC10T Terminal Blocks	100
	CA707/TS/05	Test Socket suitable for CTS6U / CTS10U Terminal Blocks	100
	SCS0.8/4	Electricians Screwdriver for slotted screws	10

APPROVALS



CTS10U

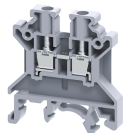


connectwell
THE RIGHT CONNECTION

RATINGS AS PER STANDARDS

STANDARDS	UL 1059	CSA C.22.2 No:158	DIN EN60947-7-1
Approvals	UL	CSA	VDE
Conductor Cross Section Stranded min.	16 AWG	16 AWG	1.5 mm ²
Conductor Cross Section Stranded max.	6 AWG	6 AWG	10 mm ²
Rated Voltage	600 V	600 V	800 V
Rated Current	65 A	65 A	57 A
Tightening Torque	14 lb-in	14 lb-in	1.2 Nm
STANDARDS	IEC/EN60947-7-1	EN60079-7	IEC 60079-0 & IEC 60079-7
Approvals	CE	ATEX	AEx
Conductor Cross Section Stranded min.	0.5 mm ²	1.5 mm ²	1.5 mm ²
Conductor Cross Section Stranded max.	10 mm ²	10 mm ²	10 mm ²
Rated Voltage	1000 V	690 V	690 V
Rated Current	57 A	50 A	50 A
Tightening Torque	1.2 Nm	1.2 Nm	1.2 Nm
Operating Temperature Range		-40 to +85 °C	
STANDARDS	EN60079-7		
Approvals	ATEX-IECex		
Conductor Cross Section Stranded min.	1.5 mm ²		
Conductor Cross Section Stranded max.	10 mm ²		
Rated Voltage	690 V		
Rated Current	50 A		
Tightening Torque	1.2 Nm		

CTS4UN



connectwell
THE RIGHT CONNECTION

4 sq.mm Standard Feed Through Terminal Blocks

4 sq.mm Feed Through Terminal Blocks are the most Versatile terminals for control, Automation, Instrumentation and Power Distribution applications. A specially designed flexible foot enable easy mounting and dismounting from the Din rail with the help of screw driver. These Terminal Blocks have marker holding recesses to accept marking tags for circuit identification. Cross connection can be achieved with the aid of shorting links / sleeves & screws.

TECHNICAL DATA

Rated Voltage	1000 V
Rated Current	32 A
Tightening Torque	0.5 Nm
Housing Material	Polymide
Product Function	Feed Through
Wire Entry Orientation	Side Entry
Mounting Possibility	DIN 32/DIN 35/DIN 35-15 Rail
Screw Size	M3
Operated by	Screwdriver
Rated Surge Voltage	8 KV
Pollution Degree	3

CONNECTION DATA

Conductor Cross Section Stranded min.	0.2 mm ²
Conductor Cross Section Stranded max.	4 mm ²
Conductor Cross Section AWG/Kcmil min	22 AWG
Conductor Cross Section AWG/Kcmil max	10 AWG
Conductor Cross Section Stranded with Ferrule/Lug min	0.2 mm ²
Conductor Cross Section Stranded with Ferrule/Lug max	4 mm ²
2 Conductors with same Cross Section Stranded min	0.2 mm ²
2 Conductor with same Cross Section Stranded max	2.5 mm ²
Conductor Cross Section Solid min	0.2 mm ²
Conductor Cross Section Solid max	6 mm ²
2 Conductors with same Cross Section Stranded with TWIN Ferrule/Lug min	0.2 mm ²
2 Conductor with same Cross Section Stranded with TWIN Ferrule/Lug max	2.5 mm ²
Stripping Length	8 mm
Internal Cylindrical Guage	A4

DIMENSIONS

Height with DIN 32 rail	51.1 mm
Height with DIN 35 x 15 mm rail	53.7 mm
Height with DIN 35 x 7.5 mm rail	46.2 mm
Length	43 mm
Width (Thickness)	6 mm

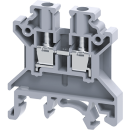
ORDERING INFORMATION

CAT. NO.	DESCRIPTION	STD. PACK
CTS4UN	4 sq.mm Feed Through Terminal block in Grey colour	100
CTS4UNR	4 sq.mm Feed Through Terminal block in Red colour	100
CTS4UNY	4 sq.mm Feed Through Terminal block in Yellow colour	100
CTS4UNBU	4 sq.mm Feed Through Terminal block in Blue colour	100
CTS4UNGN	4 sq.mm Feed Through Terminal block in Green colour	100
CTS4UNBK	4 sq.mm Feed Through Terminal block in Black colour	100
CTS4UNO	4 sq.mm Feed Through Terminal block in Orange colour	100
CTS4UNW	4 sq.mm Feed Through Terminal block in White colour	100
CTS4UNBG	4 sq.mm Feed Through Terminal block in Beige colour	100
CTS4UNBR	4 sq.mm Feed Through Terminal block in Brown colour	100

ACCESSORIES

IMAGES	CAT. NO.	DESCRIPTION	STD. PACK
	CA501-1M	Din 32 Rail unslotted 1 meter	50
	CA501-1M-S	Din 32 Rail slotted 1 meter	50
	CA501-2M	Din 32 Rail unslotted 2 meter	50
	CA501-2M-S	Din 32 Rail slotted 2 meter	50
	CA701-1M	Din 35 Rail unslotted 1 meter	50
	CA701-2M	Din 35 Rail unslotted 2 meter	50
	CA701-2M-S	Din 35 Rail slotted 2 meter	50
	CA701-1M-S	Din 35 Rail slotted 1 meter	50
	CA701-15-1M	Din 35 Rail 15 deep unslotted 1 meter	50
	CA701-15-1M-S	Din 35 Rail 15 deep slotted 1 meter	50
	CA701-15-2M	Din 35 Rail 15 deep unslotted 2 meter	50
	CA701-15-2M-S	Din 35 Rail 15 deep slotted 2 meter	50
	CA702	End Clamp in Polyamide 66 suitable for Din 32 / Din 35 / Din 35-15 Rails	50
	CA802	End Clamp in Polyamide suitable for Din 35 / Din 35-15 Rails	50

CTS4UN



connectwell
THE RIGHT CONNECTION

ACCESSORIES

IMAGES	CAT. NO.	DESCRIPTION	STD. PACK
	EP2.5/4UN	End Plate in Grey Colour	50
	EP2.5/4UNY	End Plate in Yellow Colour	50
	EP2.5/4UNBU	End Plate in Blue Colour	50
	EP2.5/4UNR	End Plate in Red Colour	50

	PP2.5/4UN	Partition Plate in Grey colour	50
--	-----------	--------------------------------	----

	SP2.5/4UN	Separator Plate in Grey colour	100
--	-----------	--------------------------------	-----

	CA722/2	Pre Assembled Shorting Link assemblies with 2 poles	100
	CA722/3	Pre Assembled Shorting Links assemblies with 3 poles	100
	CA722/4	Pre Assembled Shorting Links assemblies with 4 poles	100
	CA722/5	Pre Assembled Shorting Links assemblies with 5 poles	100
	CA722/10	Pre Assembled Shorting Links assemblies with 10 poles	10
	CA722/100	Pre Assembled Shorting Links assemblies with 100 poles	10

	CA742/2	Insulated Pre assembled Shorting Link for 2 way shorting	100
	CA742/3	Insulated Pre assembled Shorting Link for 3 way shorting	100
	CA742/4	Insulated Pre assembled Shorting Link for 4 way shorting	100
	CA742/10	Insulated Pre assembled Shorting Link for 10 way shorting	10
	CA742/100	Insulated Pre assembled Shorting Link for 100 way shorting	10

	CA703/1	Permanent Shorting Link for 2 way shorting	100
	CA704/1	Permanent Shorting Link for 3 way shorting	100
	CA705/1	Permanent Shorting Link for 4 way shorting	100
	CA732/10	Permanent Shorting Link for 10 way shorting	100
	CA732/10-A	Permanent Shorting Link (Breakable) for 10 way shorting	100
	CA732/100	Permanent Shorting Link for 100 way shorting	100

	CA707/S/Q/01	Shorting Sleeve and Screw	100
--	--------------	---------------------------	-----

	CA706/1	Removable Shorting link suitable for CTS2.5UE / CTS4UN / CMT4	100
--	---------	---	-----

	CA707/L/Q/01	Long Shorting Sleeves and Screw	100
--	--------------	---------------------------------	-----

ACCESSORIES

	CA509/K6	Blank Marking Tag	100
--	----------	-------------------	-----

	SWL4	Warning label suitable for 6mm wide terminal block	50
--	------	--	----

	CA707/TS/01	Test Socket Suitable for CTS2.5UN / CTS2.5UE / CTS4UN / CTC4U / CMB4 / CTLG2.5 / CTL2.5U / CTL2.5UH / ODL4U / ODL4UA / CDLG2.5 / CMC1-2 / CMC2-2 Terminal Blocks.	100
--	-------------	---	-----

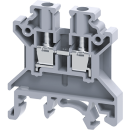
	SCS0.6/3.5	Electricians Screwdriver for slotted screws	10
--	------------	---	----

	CA713/2	External Comb Type Shorting Link available in 2 Pole	100
	CA713/3	External Comb Type Shorting Link available in 3 Pole	100
	CA713/4	External Comb Type Shorting Link available in 4 Pole	100
	CA713/10	External Comb Type Shorting Link available in 10 Pole	20

APPROVALS



CTS4UN

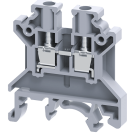


connectwell
THE RIGHT CONNECTION

RATINGS AS PER STANDARDS

STANDARDS	UL 1059	CSA C.22.2 No:158	DIN EN60947-7-1
Approvals	UL	CSA	VDE
Conductor Cross Section Stranded min.	22 AWG	22 AWG	0.5 mm ²
Conductor Cross Section Stranded max.	10 AWG	10 AWG	4 mm ²
Rated Voltage	600 V	600 V	800 V
Rated Current	40 A	40 A	32 A
Tightening Torque	7 lb-in	7 lb-in	0.5 Nm
STANDARDS	IEC/EN60947-7-1	EN60079-7	IEC 60079-0 & IEC 60079-7
Approvals	CE	ATEX	AEx
Conductor Cross Section Stranded min.	0.2 mm ²	0.5 mm ²	22 AWG
Conductor Cross Section Stranded max.	4 mm ²	4 mm ²	10 AWG
Rated Voltage	1000 V	690 V	600 V
Rated Current	32 A	28 A	30 A
Tightening Torque	0.5 Nm	0.5 Nm	7 lb-in
Operating Temperature Range		-40 to +85 °C	
STANDARDS	EN60079-7		
Approvals	ATEX-IECex		
Conductor Cross Section Stranded min.	0.5 mm ²		
Conductor Cross Section Stranded max.	4 mm ²		
Rated Voltage	690 V		
Rated Current	28 A		
Tightening Torque	0.5 Nm		

CTS2.5UE



2.5 sq.mm, 6 mm thick Feed Through Terminal Block

4 sq.mm Feed Through Terminal Blocks are the most Versatile terminals for control, Automation, Instrumentation and Power Distribution applications. A specially designed flexible foot enable easy mounting and dismounting from the Din rail with the help of screw driver. These Terminal Blocks have marker holding recesses to accept marking tags for circuit identification. Cross connection can be achieved with the aid of shorting links / sleeves & screws.

TECHNICAL DATA

Rated Voltage	1000 V
Rated Current	30 A
Tightening Torque	0.4 Nm
Housing Material	Polymide
Product Function	Feed Through
Wire Entry Orientation	Side Entry
Mounting Possibility	DIN 32/DIN 35/DIN 35-15 Rail
Screw Size	M3
Operated by	Screwdriver
Rated Surge Voltage	8 KV
Pollution Degree	3

CONNECTION DATA

Conductor Cross Section Stranded min.	0.2 mm ²
Conductor Cross Section Stranded max.	4 mm ²
Conductor Cross Section AWG/Kcmil min	22 mm ²
Conductor Cross Section AWG/Kcmil max	10 mm ²
Conductor Cross Section Stranded with Ferrule/Lug min	0.2 mm ²
Conductor Cross Section Stranded with Ferrule/Lug max	4 mm ²
2 Conductors with same Cross Section Stranded min	0.2 mm ²
2 Conductor with same Cross Section Stranded max	2.5 mm ²
Conductor Cross Section Solid min	0.2 mm ²
Conductor Cross Section Solid max	6 mm ²
2 Conductors with same Cross Section Stranded with TWIN Ferrule/Lug min	0.2 mm ²
2 Conductor with same Cross Section Stranded with TWIN Ferrule/Lug max	2.5 mm ²
Stripping Length	8 mm
Internal Cylindrical Guage	A4

DIMENSIONS

Height with DIN 32 rail	51.1 mm
Height with DIN 35 x 15 mm rail	53.7 mm
Height with DIN 35 x 7.5 mm rail	46.2 mm
Length	43 mm
Width (Thickness)	6 mm

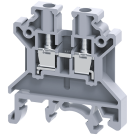
ORDERING INFORMATION

CAT. NO.	DESCRIPTION	STD. PACK
CTS2.5UE	4 sq.mm Feed Through Terminal block in Grey colour	100
CTS2.5UER	4 sq.mm Feed Through Terminal block in Red colour	100
CTS2.5UEY	4 sq.mm Feed Through Terminal block in Yellow colour	100
CTS2.5UEBU	4 sq.mm Feed Through Terminal block in Blue colour	100
CTS2.5UEGN	4 sq.mm Feed Through Terminal block in Green colour	100
CTS2.5UEBK	4 sq.mm Feed Through Terminal block in Black colour	100
CTS2.5UEO	4 sq.mm Feed Through Terminal block in Orange colour	100
CTS2.5UEW	4 sq.mm Feed Through Terminal block in White colour	100
CTS2.5UEBG	4 sq.mm Feed Through Terminal block in Beige colour	100

ACCESSORIES

IMAGES	CAT. NO.	DESCRIPTION	STD. PACK
	CA501-1M	Din 32 Rail unslotted 1 meter	50
	CA501-1M-S	Din 32 Rail slotted 1 meter	50
	CA501-2M	Din 32 Rail unslotted 2 meter	50
	CA501-2M-S	Din 32 Rail slotted 2 meter	50
	CA701-1M	Din 35 Rail unslotted 1 meter	50
	CA701-2M	Din 35 Rail unslotted 2 meter	50
	CA701-2M-S	Din 35 Rail slotted 2 meter	50
	CA701-1M-S	Din 35 Rail slotted 1 meter	50
	CA701-15-1M	Din 35 Rail 15 deep unslotted 1 meter	50
	CA701-15-1M-S	Din 35 Rail 15 deep slotted 1 meter	50
	CA701-15-2M	Din 35 Rail 15 deep unslotted 2 meter	50
	CA701-15-2M-S	Din 35 Rail 15 deep slotted 2 meter	50
	CA702	End Clamp in Polyamide 66 suitable for Din 32 / Din 35 / Din 35-15 Rails	50
	CA802	End Clamp in Polyamide suitable for Din 35 / Din 35-15 Rails	50

CTS2.5UE



connectwell
THE RIGHT CONNECTION

ACCESSORIES

IMAGES	CAT. NO.	DESCRIPTION	STD. PACK
	EP2.5/4UN	End Plate in Grey Colour	50
	EP2.5/4UNY	End Plate in Yellow Colour	50
	EP2.5/4UNBU	End Plate in Blue Colour	50
	EP2.5/4UNR	End Plate in Red Colour	50

	PP2.5/4UN	Partition Plate in Grey colour	50
--	-----------	--------------------------------	----

	SP2.5/4UN	Separator Plate in Grey colour	100
--	-----------	--------------------------------	-----

	CA722/2	Pre Assembled Shorting Link assemblies with 2 poles	100
	CA722/3	Pre Assembled Shorting Links assemblies with 3 poles	100
	CA722/4	Pre Assembled Shorting Links assemblies with 4 poles	100
	CA722/5	Pre Assembled Shorting Links assemblies with 5 poles	100
	CA722/10	Pre Assembled Shorting Links assemblies with 10 poles	10
	CA722/100	Pre Assembled Shorting Links assemblies with 100 poles	10

	CA742/2	Insulated Pre assembled Shorting Link for 2 way shorting	100
	CA742/3	Insulated Pre assembled Shorting Link for 3 way shorting	100
	CA742/4	Insulated Pre assembled Shorting Link for 4 way shorting	100
	CA742/10	Insulated Pre assembled Shorting Link for 10 way shorting	10
	CA742/100	Insulated Pre assembled Shorting Link for 100 way shorting	10

	CA703/1	Permanent Shorting Link for 2 way shorting	100
	CA704/1	Permanent Shorting Link for 3 way shorting	100
	CA705/1	Permanent Shorting Link for 4 way shorting	100
	CA732/10	Permanent Shorting Link for 10 way shorting	100
	CA732/10-A	Permanent Shorting Link (Breakable) for 10 way shorting	100
	CA732/100	Permanent Shorting Link for 100 way shorting	100

	CA707/S/Q/01	Shorting Sleeve and Screw	100
--	--------------	---------------------------	-----

	CA706/1	Removable Shorting link suitable for CTS2.5UE / CTS4UN / CMT4	100
--	---------	---	-----

	CA707/L/Q/01	Long Shorting Sleeves and Screw	100
--	--------------	---------------------------------	-----

ACCESSORIES

	CA509/K6	Blank Marking Tag	100
--	----------	-------------------	-----

	SWL4	Warning label suitable for 6mm wide terminal block	50
--	------	--	----

	CA707/TS/01	Test Socket Suitable for CTS2.5UN / CTS2.5UE / CTS4UN / CTC4U / CMB4 / CTLG2.5 / CTL2.5U / CTL2.5UH / ODL4U / ODL4UA / CDLG2.5 / CMC1-2 / CMC2-2 Terminal Blocks.	100
--	-------------	---	-----

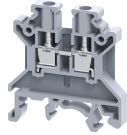
	SCS0.6/3.5	Electricians Screwdriver for slotted screws	10
--	------------	---	----

	CA713/2	External Comb Type Shorting Link available in 2 Pole	100
	CA713/3	External Comb Type Shorting Link available in 3 Pole	100
	CA713/4	External Comb Type Shorting Link available in 4 Pole	100
	CA713/10	External Comb Type Shorting Link available in 10 Pole	20

APPROVALS



CTS2.5UE

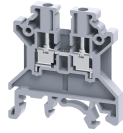


connectwell
THE RIGHT CONNECTION

RATINGS AS PER STANDARDS

STANDARDS	UL 1059	IEC/EN60947-7-1	CSA C.22.2 No:158
Approvals	UL	CE	CSA
Conductor Cross Section Stranded min.	22 AWG	0.2 mm ²	22 AWG
Conductor Cross Section Stranded max.	10 AWG	4 mm ²	10 AWG
Rated Voltage	600 V	1000 V	600 V
Rated Current	35 A	30 A	30 A
Tightening Torque	7 lb-in	0.5 Nm	7 lb-in
STANDARDS	EN60079-7	EN60079-7	
Approvals	ATEX	ATEX-IECex	
Conductor Cross Section Stranded min.	0.5 mm ²	0.5 mm ²	
Conductor Cross Section Stranded max.	4 mm ²	4 mm ²	
Rated Voltage	690 V	690 V	
Rated Current	28 A	28 A	
Tightening Torque	0.5 Nm	0.5 Nm	
Operating Temperature Range	-40 to +85 °C		

CTS2.5UN



2.5 sq.mm, 5 mm thick Feed Through Terminal Block

2.5 sq.mm Feed Through Terminal Blocks are the most Versatile terminals for control, automation, instrumentation and power distribution applications. A specially designed flexible foot enables easy mounting and dismounting from the Din Rail with the help of a screw driver.

These Terminal Blocks have marker holding recesses to accept marking tags for circuit identification. Cross connection can be achieved with the aid of shorting links / sleeves & screws.

TECHNICAL DATA

Rated Voltage	1000 V
Rated Current	24 A
Tightening Torque	0.4 Nm
Housing Material	Polymide
Product Function	Feed Through
Wire Entry Orientation	Side Entry
Mounting Possibility	DIN 32/DIN 35/DIN 35-15 Rail
Screw Size	M2.5
Operated by	Screwdriver
Rated Surge Voltage	8 KV
Pollution Degree	3

CONNECTION DATA

Conductor Cross Section Stranded min.	0.2 mm ²
Conductor Cross Section Stranded max.	2.5 mm ²
Conductor Cross Section AWG/Kcmil min	22 AWG
Conductor Cross Section AWG/Kcmil max	12 AWG
Conductor Cross Section Stranded with Ferrule/Lug min	0.2 mm ²
Conductor Cross Section Stranded with Ferrule/Lug max	2.5 mm ²
2 Conductors with same Cross Section Stranded min	0.2 mm ²
2 Conductor with same Cross Section Stranded max	1.5 mm ²
Conductor Cross Section Solid min	0.2 mm ²
Conductor Cross Section Solid max	4 mm ²
2 Conductors with same Cross Section Stranded with TWIN Ferrule/Lug min	0.2 mm ²
2 Conductor with same Cross Section Stranded with TWIN Ferrule/Lug max	1.5 mm ²
Stripping Length	8 mm
Internal Cylindrical Guage	A3

DIMENSIONS

Height with DIN 32 rail	51.1 mm
Height with DIN 35 x 15 mm rail	53.7 mm
Height with DIN 35 x 7.5 mm rail	46.2 mm
Length	43 mm
Width (Thickness)	5 mm

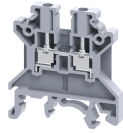
ORDERING INFORMATION

CAT. NO.	DESCRIPTION	STD. PACK
CTS2.5UN	2.5 sq.mm Feed Through Terminal Block in Grey colour	100
CTS2.5UNBG	2.5 sq.mm Feed Through Terminal Block in Beige colour	100
CTS2.5UNBK	2.5 sq.mm Feed Through Terminal Block in Black colour	100
CTS2.5UNBU	2.5 sq.mm Feed Through Terminal Block in Blue colour	100
CTS2.5UNGN	2.5 sq.mm Feed Through Terminal Block in Green colour	100
CTS2.5UNO	2.5 sq.mm Feed Through Terminal Block in Orange colour	100
CTS2.5UNR	2.5 sq.mm Feed Through Terminal Block in Red colour	100
CTS2.5UNW	2.5 sq.mm Feed Through Terminal Block in White colour	100
CTS2.5UNY	2.5 sq.mm Feed Through Terminal Block in Yellow colour	100

ACCESSORIES

IMAGES	CAT. NO.	DESCRIPTION	STD. PACK
	CA501-1M	Din 32 Rail unslotted 1 meter	50
	CA501-1M-S	Din 32 Rail slotted 1 meter	50
	CA501-2M	Din 32 Rail unslotted 2 meter	50
	CA501-2M-S	Din 32 Rail slotted 2 meter	50
	CA701-1M	Din 35 Rail unslotted 1 meter	50
	CA701-2M	Din 35 Rail unslotted 2 meter	50
	CA701-2M-S	Din 35 Rail slotted 2 meter	50
	CA701-1M-S	Din 35 Rail slotted 1 meter	50
	CA701-15-1M	Din 35 Rail 15 deep unslotted 1 meter	50
	CA701-15-1M-S	Din 35 Rail 15 deep slotted 1 meter	50
	CA701-15-2M	Din 35 Rail 15 deep unslotted 2 meter	50
	CA701-15-2M-S	Din 35 Rail 15 deep slotted 2 meter	50
	CA702	End Clamp in Polyamide 66 suitable for Din 32 / Din 35 / Din 35-15 Rails	50
	CA802	End Clamp in Polyamide suitable for Din 35 / Din 35-15 Rails	50

CTS2.5UN



connectwell
THE RIGHT CONNECTION

ACCESSORIES

IMAGES	CAT. NO.	DESCRIPTION	STD. PACK
	EP2.5/4UN	End Plate in Grey Colour	50
	EP2.5/4UNY	End Plate in Yellow Colour	50
	EP2.5/4UNBU	End Plate in Blue Colour	50
	EP2.5/4UNR	End Plate in Red Colour	50
	PP2.5/4UN	Partition Plate in Grey colour	50
	SP2.5/4UN	Separator Plate in Grey colour	100
	CA721/2	Preassembled Internal Short Link assemblies with 2 poles	100
	CA721/3	Preassembled Internal Short Link assemblies with 3 poles	100
	CA721/4	Preassembled Internal Short Link assemblies with 4 poles	100
	CA721/10	Preassembled Internal Short Link assemblies with 10 poles	10
	CA721/100	Preassembled Internal Short Link assemblies with 100 poles	10
	CA741/2	Insulated Pre assembled Shorting Link for 2 way shorting	100
	CA741/3	Insulated Pre assembled Shorting Link for 3 way shorting	100
	CA741/4	Insulated Pre assembled Shorting Link for 4 way shorting	100
	CA741/10	Insulated Pre assembled Shorting Link for 10 way shorting	10
	CA741/100	Insulated Pre assembled Shorting Link for 100 way shorting	10
	CA717/2	External Comb Type Shorting Link available in 2 Pole	100
	CA717/3	External Comb Type Shorting Link available in 3 Pole	100
	CA717/4	External Comb Type Shorting Link available in 4 Pole	100
	CA717/10	External Comb Type Shorting Link available in 10 Pole	20
	CA703/01	Permanent Shorting Links for 2 way shorting	100
	CA704/01	Permanent Shorting Links for 3 way shorting	100
	CA705/01	Permanent Shorting Links for 4 way shorting	100
	CA731/10	Permanent Shorting Links for 10 way shorting	100
	CA731/100	Permanent Breakable Shorting Links for 100 way	10
	CA707/S/Q/01	Shorting Sleeve and Screw	100

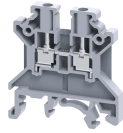
ACCESSORIES

IMAGES	CAT. NO.	DESCRIPTION	STD. PACK
	CA707/L/Q/01	Long Shorting Sleeves and Screw	100
	CA509/K5	Blank Marking Tag	100
	CA707/TS/01	Test Socket Suitable for CTS2.5UN / CTS2.5UE / CTS4UN / CTC4U / CMB4 / CTLG2.5 / CTL2.5U / CTL2.5UH / ODL4U / ODL4UA / CDLG2.5 / CMC1-2 / CMC2-2 Terminal Blocks.	100
	SCS0.5/3	Electricians Screwdriver for slotted screws	10

APPROVALS



CTS2.5UN

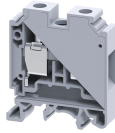


connectwell
THE RIGHT CONNECTION

RATINGS AS PER STANDARDS

STANDARDS	UL 1059	CSA C.22.2 No:158	DIN EN60947-7-1
Approvals	UL	CSA	VDE
Conductor Cross Section Stranded min.	22 AWG	22 AWG	0.5 mm ²
Conductor Cross Section Stranded max.	12 AWG	12 AWG	2.5 mm ²
Rated Voltage	600 V	600 V	800 V
Rated Current	25 A	25 A	24 A
Tightening Torque	7 lb-in	7 lb-in	0.4 Nm
STANDARDS	IEC/EN60947-7-1	EN60079-7	IEC 60079-0 & IEC 60079-7
Approvals	CE	ATEX	ATEX-IECex
Conductor Cross Section Stranded min.	0.2 mm ²	0.5 mm ²	0.5 mm ²
Conductor Cross Section Stranded max.	2.5 mm ²	2.5 mm ²	2.5 mm ²
Rated Voltage	1000 V	690 V	690 V
Rated Current	24 A	21 A	21 A
Tightening Torque	0.4 Nm	0.4 Nm	0.4 Nm
Operating Temperature Range		-60 to +110 °C	-60 to +110 °C

CTS25UN



25 sq.mm Standard Feed Through Terminal Blocks

25 sq.mm Feed Through Terminal Blocks are the most Versatile terminals for control, Automation, Instrumentation and Power Distribution applications. A specially designed flexible foot enable easy mounting and dismounting from the Din rail with the help of screw driver. These Terminal Blocks have marker holding recesses to accept marking tags for circuit identification. Cross connection can be achieved with the aid of shorting links / sleeves & screws.

TECHNICAL DATA

Rated Current	1000 A
Rated Current - Input Side	101 A
Tightening Torque	2 Nm
Housing Material	Polymide
Product Function	Feed Through
Wire Entry Orientation	Side Entry
Mounting Possibility	DIN 32/DIN 35/DIN 35-15 Rail
Screw Size	M5
Operated by	Screwdriver
Rated Surge Voltage	8 KV
Pollution Degree	3

CONNECTION DATA

Conductor Cross Section Stranded min.	4 mm ²
Conductor Cross Section Stranded max.	25 mm ²
Conductor Cross Section AWG/Kcmil min	12 AWG
Conductor Cross Section AWG/Kcmil max	4 AWG
Conductor Cross Section Stranded with Ferrule/Lug min	4 mm ²
Conductor Cross Section Stranded with Ferrule/Lug max	25 mm ²
2 Conductors with same Cross Section Stranded min	4 mm ²
2 Conductor with same Cross Section Stranded max	16 mm ²
2 Conductors with same Cross Section Stranded with TWIN Ferrule/Lug min	4 mm ²
2 Conductor with same Cross Section Stranded with TWIN Ferrule/Lug max	10 mm ²
Stripping Length	14 mm
Internal Cylindrical Guage	A8

DIMENSIONS

Height with DIN 32 rail	62.3 mm
Height with DIN 35 x 15 mm rail	64.7 mm
Height with DIN 35 x 7.5 mm rail	57.2 mm
Length	49 mm
Width (Thickness)	12 mm

ORDERING INFORMATION

CAT. NO.	DESCRIPTION	STD. PACK
CTS25UN	25 sq.mm Feed Through Terminal Block in Grey	50

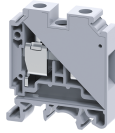
ORDERING INFORMATION

CAT. NO.	DESCRIPTION	STD. PACK
	colour	
CTS25UNBK	25 sq.mm Feed Through Terminal Block in Black colour	50
CTS25UNBU	25 sq.mm Feed Through Terminal Block in Blue colour	50
CTS25UNGN	25 sq.mm Feed Through Terminal Block in Green colour	50
CTS25UNR	25 sq.mm Feed Through Terminal Block in Red colour	50
CTS25UNY	25 sq.mm Feed Through Terminal Block in Yellow colour	50

ACCESSORIES

IMAGES	CAT. NO.	DESCRIPTION	STD. PACK
	CA501-1M	Din 32 Rail unslotted 1 meter	50
	CA501-1M-S	Din 32 Rail slotted 1 meter	50
	CA501-2M	Din 32 Rail unslotted 2 meter	50
	CA501-2M-S	Din 32 Rail slotted 2 meter	50
	CA701-1M	Din 35 Rail unslotted 1 meter	50
	CA701-2M	Din 35 Rail unslotted 2 meter	50
	CA701-2M-S	Din 35 Rail slotted 2 meter	50
	CA701-1M-S	Din 35 Rail slotted 1 meter	50
	CA701-15-1M	Din 35 Rail 15 deep unslotted 1 meter	50
	CA701-15-1M-S	Din 35 Rail 15 deep slotted 1 meter	50
	CA701-15-2M	Din 35 Rail 15 deep unslotted 2 meter	50
	CA701-15-2M-S	Din 35 Rail 15 deep slotted 2 meter	50
	CA702	End Clamp in Polyamide 66 suitable for Din 32 / Din 35 / Din 35-15 Rails	50
	CA802	End Clamp in Polyamide suitable for Din 35 / Din 35-15 Rails	50
	PP25UN	Partition Plate in Grey colour suitable for CTS25UN Terminal Block	50

CTS25UN



connectwell
THE RIGHT CONNECTION

ACCESSORIES

IMAGES	CAT. NO.	DESCRIPTION	STD. PACK
	CA725/2	Pre assembled Shorting Link for 2 way shorting	50
	CA725/3	Pre assembled Shorting Link for 3 way shorting	20
	CA725/4	Pre assembled Shorting Link for 4 way shorting	20
	CA725/10	Pre assembled Shorting Link for 10 way shorting	10
	CA745/2	Insulated Pre assembled Shorting Link for 2 way shorting	50
	CA745/3	Insulated Pre assembled Shorting Link for 3 way shorting	20
	CA745/4	Insulated Pre assembled Shorting Link for 4 way shorting	20
	CA745/10	Insulated Pre assembled Shorting Link for 10 way shorting	10
	CA703/4	Permanent Shorting Link for 2 way shorting	100
	CA704/4	Permanent Shorting Link for 3 way shorting	100
	CA705/4	Permanent Shorting Link for 4 way shorting	100
	CA705/4	Permanent Shorting Link for 4 way shorting	100
	CA707/S/Q/2	Shorting Sleeve and Screw suitable for CTS25UN / CTS35UN / CTS35UNA Terminal Blocks.	100
	CA509/K12	Marking Tag Blank suitable for CTS16U / CTS25UN / CGT16N / CDB25 / CMDB25 / CSC16T / CSCG16T / CY16 / CYG16 Terminal Blocks	100
	CA707/TS/06	Test Socket Suitable for CTS25UN / CTS35UN / CTS35UNA Terminal Blocks	100
	SCS1/5.5	Electricians Screwdriver for slotted screws	10

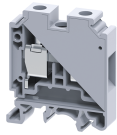
APPROVALS



RATINGS AS PER STANDARDS

STANDARDS	UL 1059	IEC/EN60947-7-1	CSA C.22.2 No:158
Approvals	UL	CE	CSA
Conductor Cross Section Stranded min.	14 AWG	4 mm ²	12 AWG
Conductor Cross Section Stranded max.	2 AWG	25 mm ²	4 AWG
Rated Voltage	600 V	1000 V	600 V
Rated Current	105 A	101 A	85 A

CTS25UN

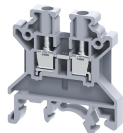


connectwell
THE RIGHT CONNECTION

RATINGS AS PER STANDARDS

	30 lb-in	2 Nm	18 lb-in
Tightening Torque			
STANDARDS	EN60079-7	EN60079-7	
Approvals	ATEX-IECex	ATEX	
Conductor Cross Section Stranded min.	6 mm ²	6 mm ²	
Conductor Cross Section Stranded max.	25 mm ²	25 mm ²	
Rated Voltage	690 V	690 V	
Rated Current	88 A	88 A	
Tightening Torque	2 Nm	2 Nm	
Operating Temperature Range		-40 to +85 °C	

CTS4UN



connectwell
THE RIGHT CONNECTION

4 sq.mm Standard Feed Through Terminal Blocks

4 sq.mm Feed Through Terminal Blocks are the most Versatile terminals for control, Automation, Instrumentation and Power Distribution applications. A specially designed flexible foot enable easy mounting and dismounting from the Din rail with the help of screw driver. These Terminal Blocks have marker holding recesses to accept marking tags for circuit identification. Cross connection can be achieved with the aid of shorting links / sleeves & screws.

TECHNICAL DATA

Rated Voltage	1000 V
Rated Current	32 A
Tightening Torque	0.5 Nm
Housing Material	Polymide
Product Function	Feed Through
Wire Entry Orientation	Side Entry
Mounting Possibility	DIN 32/DIN 35/DIN 35-15 Rail
Screw Size	M3
Operated by	Screwdriver
Rated Surge Voltage	8 KV
Pollution Degree	3

CONNECTION DATA

Conductor Cross Section Stranded min.	0.2 mm ²
Conductor Cross Section Stranded max.	4 mm ²
Conductor Cross Section AWG/Kcmil min	22 AWG
Conductor Cross Section AWG/Kcmil max	10 AWG
Conductor Cross Section Stranded with Ferrule/Lug min	0.2 mm ²
Conductor Cross Section Stranded with Ferrule/Lug max	4 mm ²
2 Conductors with same Cross Section Stranded min	0.2 mm ²
2 Conductor with same Cross Section Stranded max	2.5 mm ²
Conductor Cross Section Solid min	0.2 mm ²
Conductor Cross Section Solid max	6 mm ²
2 Conductors with same Cross Section Stranded with TWIN Ferrule/Lug min	0.2 mm ²
2 Conductor with same Cross Section Stranded with TWIN Ferrule/Lug max	2.5 mm ²
Stripping Length	8 mm
Internal Cylindrical Guage	A4

DIMENSIONS

Height with DIN 32 rail	51.1 mm
Height with DIN 35 x 15 mm rail	53.7 mm
Height with DIN 35 x 7.5 mm rail	46.2 mm
Length	43 mm
Width (Thickness)	6 mm

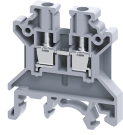
ORDERING INFORMATION

CAT. NO.	DESCRIPTION	STD. PACK
CTS4UN	4 sq.mm Feed Through Terminal block in Grey colour	100
CTS4UNR	4 sq.mm Feed Through Terminal block in Red colour	100
CTS4UNY	4 sq.mm Feed Through Terminal block in Yellow colour	100
CTS4UNBU	4 sq.mm Feed Through Terminal block in Blue colour	100
CTS4UNGN	4 sq.mm Feed Through Terminal block in Green colour	100
CTS4UNBK	4 sq.mm Feed Through Terminal block in Black colour	100
CTS4UNO	4 sq.mm Feed Through Terminal block in Orange colour	100
CTS4UNW	4 sq.mm Feed Through Terminal block in White colour	100
CTS4UNBG	4 sq.mm Feed Through Terminal block in Beige colour	100
CTS4UNBR	4 sq.mm Feed Through Terminal block in Brown colour	100

ACCESSORIES

IMAGES	CAT. NO.	DESCRIPTION	STD. PACK
	CA501-1M	Din 32 Rail unslotted 1 meter	50
	CA501-1M-S	Din 32 Rail slotted 1 meter	50
	CA501-2M	Din 32 Rail unslotted 2 meter	50
	CA501-2M-S	Din 32 Rail slotted 2 meter	50
	CA701-1M	Din 35 Rail unslotted 1 meter	50
	CA701-2M	Din 35 Rail unslotted 2 meter	50
	CA701-2M-S	Din 35 Rail slotted 2 meter	50
	CA701-1M-S	Din 35 Rail slotted 1 meter	50
	CA701-15-1M	Din 35 Rail 15 deep unslotted 1 meter	50
	CA701-15-1M-S	Din 35 Rail 15 deep slotted 1 meter	50
	CA701-15-2M	Din 35 Rail 15 deep unslotted 2 meter	50
	CA701-15-2M-S	Din 35 Rail 15 deep slotted 2 meter	50
	CA702	End Clamp in Polyamide 66 suitable for Din 32 / Din 35 / Din 35-15 Rails	50
	CA802	End Clamp in Polyamide suitable for Din 35 / Din 35-15 Rails	50

CTS4UN



connectwell
THE RIGHT CONNECTION

ACCESSORIES

IMAGES	CAT. NO.	DESCRIPTION	STD. PACK
	EP2.5/4UN	End Plate in Grey Colour	50
	EP2.5/4UNY	End Plate in Yellow Colour	50
	EP2.5/4UNBU	End Plate in Blue Colour	50
	EP2.5/4UNR	End Plate in Red Colour	50

	PP2.5/4UN	Partition Plate in Grey colour	50
--	-----------	--------------------------------	----

	SP2.5/4UN	Separator Plate in Grey colour	100
--	-----------	--------------------------------	-----

	CA722/2	Pre Assembled Shorting Link assemblies with 2 poles	100
	CA722/3	Pre Assembled Shorting Links assemblies with 3 poles	100
	CA722/4	Pre Assembled Shorting Links assemblies with 4 poles	100
	CA722/5	Pre Assembled Shorting Links assemblies with 5 poles	100
	CA722/10	Pre Assembled Shorting Links assemblies with 10 poles	10
	CA722/100	Pre Assembled Shorting Links assemblies with 100 poles	10

	CA742/2	Insulated Pre assembled Shorting Link for 2 way shorting	100
	CA742/3	Insulated Pre assembled Shorting Link for 3 way shorting	100
	CA742/4	Insulated Pre assembled Shorting Link for 4 way shorting	100
	CA742/10	Insulated Pre assembled Shorting Link for 10 way shorting	10
	CA742/100	Insulated Pre assembled Shorting Link for 100 way shorting	10

	CA703/1	Permanent Shorting Link for 2 way shorting	100
	CA704/1	Permanent Shorting Link for 3 way shorting	100
	CA705/1	Permanent Shorting Link for 4 way shorting	100
	CA732/10	Permanent Shorting Link for 10 way shorting	100
	CA732/10-A	Permanent Shorting Link (Breakable) for 10 way shorting	100
	CA732/100	Permanent Shorting Link for 100 way shorting	100

	CA707/S/Q/01	Shorting Sleeve and Screw	100
--	--------------	---------------------------	-----

	CA706/1	Removable Shorting link suitable for CTS2.5UE / CTS4UN / CMT4	100
--	---------	---	-----

	CA707/L/Q/01	Long Shorting Sleeves and Screw	100
--	--------------	---------------------------------	-----

ACCESSORIES

	CA509/K6	Blank Marking Tag	100
--	----------	-------------------	-----

	SWL4	Warning label suitable for 6mm wide terminal block	50
--	------	--	----

	CA707/TS/01	Test Socket Suitable for CTS2.5UN / CTS2.5UE / CTS4UN / CTC4U / CMB4 / CTLG2.5 / CTL2.5U / CTL2.5UH / ODL4U / ODL4UA / CDLG2.5 / CMC1-2 / CMC2-2 Terminal Blocks.	100
--	-------------	---	-----

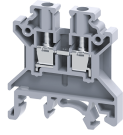
	SCS0.6/3.5	Electricians Screwdriver for slotted screws	10
--	------------	---	----

	CA713/2	External Comb Type Shorting Link available in 2 Pole	100
	CA713/3	External Comb Type Shorting Link available in 3 Pole	100
	CA713/4	External Comb Type Shorting Link available in 4 Pole	100
	CA713/10	External Comb Type Shorting Link available in 10 Pole	20

APPROVALS



CTS4UN

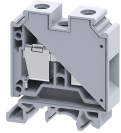


connectwell
THE RIGHT CONNECTION

RATINGS AS PER STANDARDS

STANDARDS	UL 1059	CSA C.22.2 No:158	DIN EN60947-7-1
Approvals	UL	CSA	VDE
Conductor Cross Section Stranded min.	22 AWG	22 AWG	0.5 mm ²
Conductor Cross Section Stranded max.	10 AWG	10 AWG	4 mm ²
Rated Voltage	600 V	600 V	800 V
Rated Current	40 A	40 A	32 A
Tightening Torque	7 lb-in	7 lb-in	0.5 Nm
STANDARDS	IEC/EN60947-7-1	EN60079-7	IEC 60079-0 & IEC 60079-7
Approvals	CE	ATEX	AEx
Conductor Cross Section Stranded min.	0.2 mm ²	0.5 mm ²	22 AWG
Conductor Cross Section Stranded max.	4 mm ²	4 mm ²	10 AWG
Rated Voltage	1000 V	690 V	600 V
Rated Current	32 A	28 A	30 A
Tightening Torque	0.5 Nm	0.5 Nm	7 lb-in
Operating Temperature Range		-40 to +85 °C	
STANDARDS	EN60079-7		
Approvals	ATEX-IECex		
Conductor Cross Section Stranded min.	0.5 mm ²		
Conductor Cross Section Stranded max.	4 mm ²		
Rated Voltage	690 V		
Rated Current	28 A		
Tightening Torque	0.5 Nm		

CTS35UNA



connectwell
THE RIGHT CONNECTION

35 sq.mm Feed Through Terminal Blocks with Allen Screws

35 sq.mm Feed Through Terminal Blocks are the most Versatile terminals for control, Automation, Instrumentation and Power Distribution applications. A specially designed flexible foot enable easy mounting and dismounting from the Din rail with the help of screw driver. These Terminal Blocks have marker holding recesses to accept marking tags for circuit identification. Cross connection can be achieved with the aid of shorting links / sleeves & screws.

TECHNICAL DATA

Rated Voltage	1000 V
Rated Current	125 A
Tightening Torque	2.5 Nm
Housing Material	Polymide
Product Function	Feed Through
Wire Entry Orientation	Side Entry
Mounting Possibility	DIN 32/DIN 35/DIN 35-15 Rail
Screw Size	M6
Operated by	Allen Key
Rated Surge Voltage	8 KV
Pollution Degree	3

CONNECTION DATA

Conductor Cross Section Stranded min.	4 mm ²
Conductor Cross Section Stranded max.	35 mm ²
Conductor Cross Section AWG/Kcmil min	12 AWG
Conductor Cross Section AWG/Kcmil max	2 AWG
Conductor Cross Section Stranded with Ferrule/Lug min	4 mm ²
Conductor Cross Section Stranded with Ferrule/Lug max	35 mm ²
2 Conductors with same Cross Section Stranded min	4 mm ²
2 Conductor with same Cross Section Stranded max	16 mm ²
2 Conductors with same Cross Section Stranded with TWIN Ferrule/Lug min	4 mm ²
2 Conductor with same Cross Section Stranded with TWIN Ferrule/Lug max	16 mm ²
Stripping Length	15 mm
Internal Cylindrical Guage	A9

DIMENSIONS

Height with DIN 32 rail	64.3 mm
Height with DIN 35 x 15 mm rail	66.7 mm
Height with DIN 35 x 7.5 mm rail	59.2 mm
Length	50.5 mm
Width (Thickness)	16 mm

ORDERING INFORMATION

CAT. NO.	DESCRIPTION	STD. PACK
CTS35UNA	35 sq.mm Feed Through Terminal Block in Grey	50

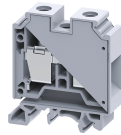
ORDERING INFORMATION

CAT. NO.	DESCRIPTION	STD. PACK
	colour	
CTS35UNAR	35 sq.mm Feed Through Terminal Block in Red colour	50
CTS35UNAY	35 sq.mm Feed Through Terminal Block in Yellow colour	50
CTS35UNABU	35 sq.mm Feed Through Terminal Block in Blue colour	50
CTS35UNABK	35 sq.mm Feed Through Terminal Block in Black colour	50
CTS35UNAGN	35 sq.mm Feed Through Terminal Block in Green colour	50

ACCESSORIES

IMAGES	CAT. NO.	DESCRIPTION	STD. PACK
	CA501-1M	Din 32 Rail unslotted 1 meter	50
	CA501-1M-S	Din 32 Rail slotted 1 meter	50
	CA501-2M	Din 32 Rail unslotted 2 meter	50
	CA501-2M-S	Din 32 Rail slotted 2 meter	50
	CA701-1M	Din 35 Rail unslotted 1 meter	50
	CA701-2M	Din 35 Rail unslotted 2 meter	50
	CA701-2M-S	Din 35 Rail slotted 2 meter	50
	CA701-1M-S	Din 35 Rail slotted 1 meter	50
	CA701-15-1M	Din 35 Rail 15 deep unslotted 1 meter	50
	CA701-15-1M-S	Din 35 Rail 15 deep slotted 1 meter	50
	CA701-15-2M	Din 35 Rail 15 deep unslotted 2 meter	50
	CA701-15-2M-S	Din 35 Rail 15 deep slotted 2 meter	50
	CA702	End Clamp in Polyamide 66 suitable for Din 32 / Din 35 / Din 35-15 Rails	50
	CA802	End Clamp in Polyamide suitable for Din 35 / Din 35-15 Rails	50
	PP35UN	Partition Plate in Grey colour suitable for CTS35UN Terminal Block	50

CTS35UNA



connectwell
THE RIGHT CONNECTION

ACCESSORIES

IMAGES	CAT. NO.	DESCRIPTION	STD. PACK
	CA771/2	Pre assembled Shorting Link for 2 way shorting	50
	CA771/3	Pre assembled Shorting Link for 3 way shorting	20
	CA771/4	Pre assembled Shorting Link for 4 way shorting	20
	CA771/10	Pre assembled Shorting Link for 10 way shorting	10
	CA781/2	Insulated Pre assembled Shorting Link for 2 way shorting	50
	CA781/3	Insulated Pre assembled Shorting Link for 3 way shorting	20
	CA781/4	Insulated Pre assembled Shorting Link for 4 way shorting	20
	CA781/10	Insulated Pre assembled Shorting Link for 10 way shorting	10
	CA703/10	Permanent Shorting Links for 2 way shorting	100
	CA704/10	Permanent Shorting Links for 3 way shorting	100
	CA705/10	Permanent Shorting Links for 4 way shorting	100
	CA770/10	Permanent Shorting Links for 10 way shorting	100
	CA707/S/Q/2	Shorting Sleeve and Screw suitable for CTS25UN / CTS35UN / CTS35UNA Terminal Blocks.	100
	CA509/K16	Marking Tag Blank suitable for CTS35UNA / CGT35U Terminal Blocks	100
	CA707/TS/06	Test Socket Suitable for CTS25UN / CTS35UN / CTS35UNA Terminal Blocks	100
	SCS1/5.5	Electricians Screwdriver for slotted screws	10

APPROVALS



RATINGS AS PER STANDARDS

STANDARDS	IEC/EN60947-1
Approvals	CE
Conductor Cross Section Stranded min.	4 mm ²
Conductor Cross Section Stranded max.	35 mm ²
Rated Voltage	1000 V
Rated Current	125 A
Tightening Torque	2.5 Nm