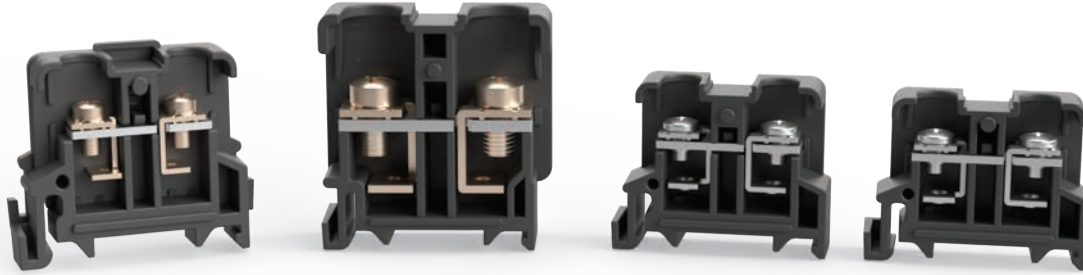




Please scan the QR code to view details.



HYBT / HYTM series

DIN-rail mounting assembly terminal block with various rated current specifications

External dimensions

External dimensions

Model	External dimensions (mm)
HYTM-15A	
HYBT-15A2	
HYTM-25A	
HYTM-35A	
HYTM-60A	
HYTM-100A	

Separators

[Unit: mm]

Model	External dimensions (mm)
HYTM-02 (15 A, 25 A)	
HYTM-04 (35 A)	
HYTM-05 (60 A)	
HYTM-06 (100 A)	
HYBT-12 (HYBT-15A2-A)	
HYBT-12 (HYBT-15A2-B)	

Specifications

Model	HYTM-15A	HYBT-15A2	HYTM-25A	HYTM-35A	HYTM-60A	HYTM-100A
Rated insulation voltage	600 V					
Rated current	15 A	15 A	25 A	35 A	60 A	100 A
Insulation resistance	100 MΩ or higher (between charging sections and between each charging section and the installed metal plate)					
Dielectric strength	2,500 V a.c. 1 minute (between charging and non-charging sections)					
Terminal bolts	M3.5	M3.5	M4	M4	M6	M6
Ambient temperature/humidity	-20 to 55 °C, 45 to 85% RH					

Accessories

Accessories for each model

Model	HYTM-15A	HYBT-15A2	HYTM-25A	HYTM-35A	HYTM-60A	HYTM-100A
Rail	HYBT-01					
Separator	HYTM-02	HYBT-12	HYTM-02	HYTM-04	HYTM-05	HYTM-06
Stopper	HYBT-07					
Terminal cover	HYTM-08	HYBT-08	HYTM-08			
Number plate	HYTM-07	HYBT-10	HYTM-07			
Short terminal	HYBT-13	HYBT-13	-	-	-	-

Stoppers

Model	External dimensions (mm)
HYBT-ST10	
HYBT-07	

Number plates

Model	External dimensions (mm)
HYBT-10 (9 mm wide) * For HYBT-15A2	
HYTM-07 (7.7 mm wide)	

Terminal covers

Model	External dimensions (mm)
HYBT-08 * For HYBT-15A2	
HYTM-08	

Short bars

Model	External dimensions (mm)
HYBT-13-3	
HYBT-13-6	
HYBT-13-12	
HYBT-13-12	
HYBT-13-20	