

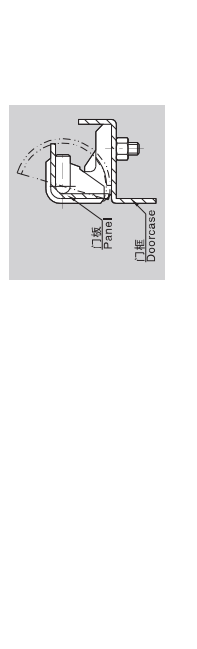
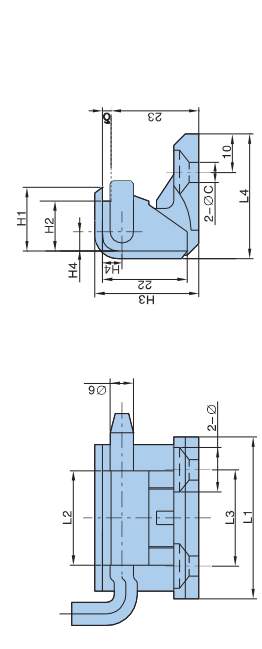
目录 Category	A拉手系列 Handles series	B平面锁系列 Plane lock series	C连杆锁系列 Rod control series	D面板锁系列 Plane lock series	E执手锁系列 Handle lock series	F转舌锁系列 Cam lock series	G铰链系列 Hinge series	H搭扣锁系列 Toggle lock series	I门销系列 Door bolt series	J电子锁系列 Electronic lock series	K密封条系列 Gasketing series	L限位系列 Door stop series	M附件系列 Accessories series	N不锈钢系列 Stainless steel series	索引 Index
----------------	----------------------------	--------------------------------	---------------------------------	--------------------------------	---------------------------------	------------------------------	--------------------------	---------------------------------	------------------------------	-------------------------------------	-------------------------------	------------------------------	--------------------------------	-------------------------------------	-------------

HL004



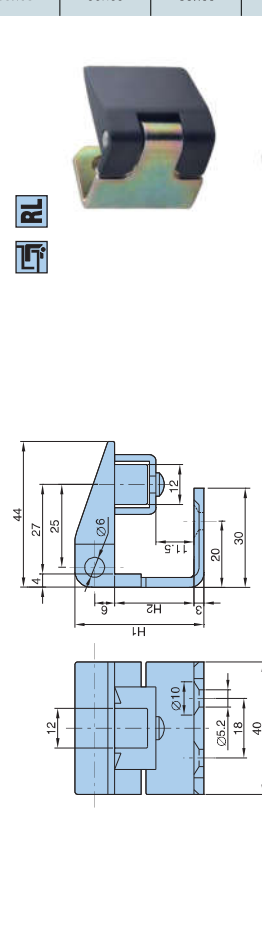
- 材质: 锌合金动、静铰链, 分不锈钢和铜铰链
- 表面处理: 镍亮铬, 喷无光黑
- 备注: 转动约180°
- Material/Zinc die-casting hinge stainless steel and nickel plating steel pin are available
- Finish: Bright chrome plating Black powder coated
- Remark: 180° hinge.

侧边安装外露式铰链 Side prominent hinge



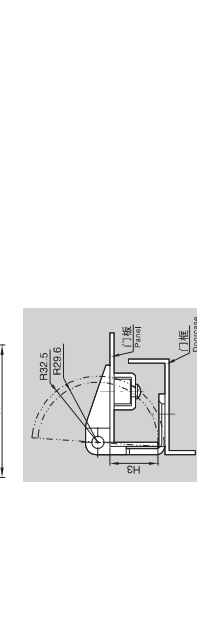
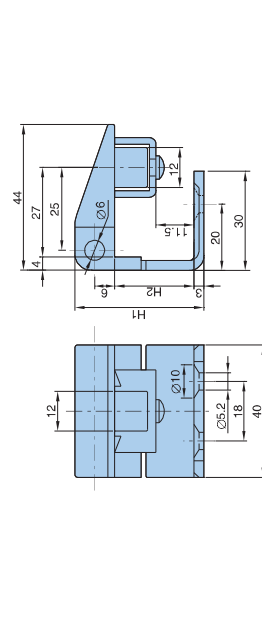
基本尺寸 Dimensions		产品型号及特性 Product Number		产品 单重(g) Weight	包装数 Lot								
H1	H2	H3	H4	L1	L2	L3	L4	ΦC	Φ	6	6	140	200
18	15.5	27.5	5.5	5.2	4.0	3.5	6.2	2.2	3	12	12	140	200
16	13	27	5.5	4.2	2.4	2.5	2.2	1.5	3	12	12	135	200
17.5	14	28	6.2	4.2	2.5	3.3	3.2	1.2	3	12	12	129	200

HL008



基本尺寸 Dimensions		产品型号及特性 Product Number		产品 单重(g) Weight	包装数 Lot								
H1	H2	H3	H4	L1	L2	L3	L4	ΦC	Φ	6	6	166	150
42	27	26.5	6	2.8	2.3	2.3	2.3	1.3	3	12	12	166	150
39	24	23.5	6	2.8	2.3	2.3	2.3	1.3	3	12	12	71	150

侧边安装外露式铰链 Side prominent hinge



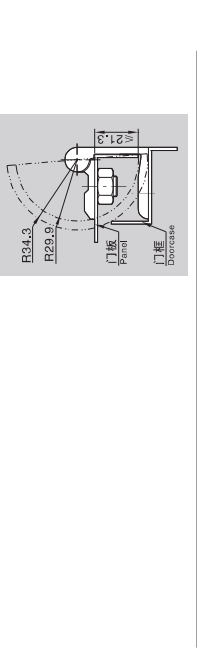
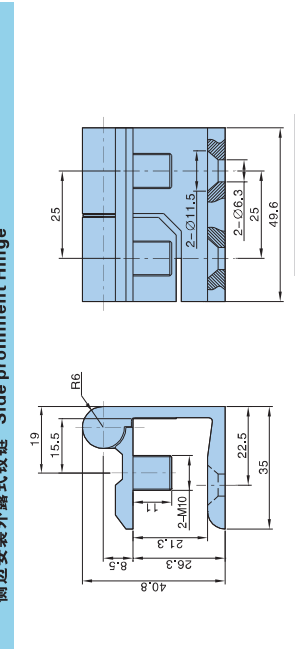
基本尺寸 Dimensions		产品型号及特性 Product Number		产品 单重(g) Weight	包装数 Lot								
H1	H2	H3	H4	L1	L2	L3	L4	ΦC	Φ	6	6	166	150
42	27	26.5	6	2.8	2.3	2.3	2.3	1.3	3	12	12	166	150
39	24	23.5	6	2.8	2.3	2.3	2.3	1.3	3	12	12	71	150

HL006

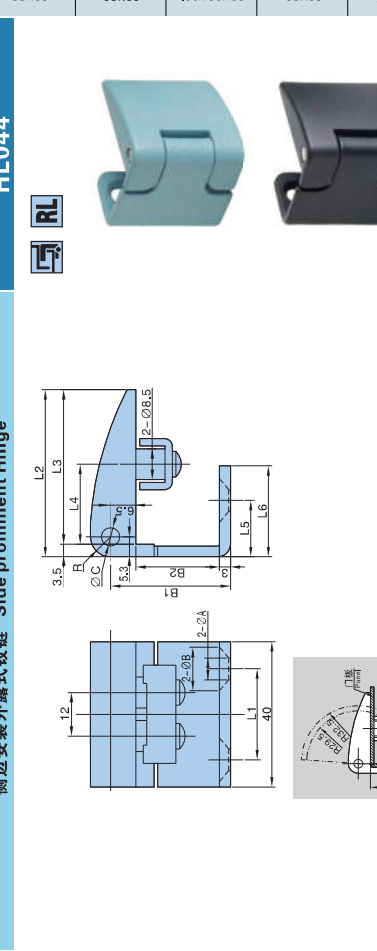


- 材质: 锌合金动、静铰链, 分不锈钢和铜铰链
- 表面处理: 喷无光黑, 喷沙纹黑
- 备注: 转动约180°
- Material/Zinc die-casting hinge, stainless steel and nickel plating steel pin are available, brass washer
- Finish: Matt black, Black powder coated
- Remark: 180° hinge

侧边安装外露式铰链 Side prominent hinge

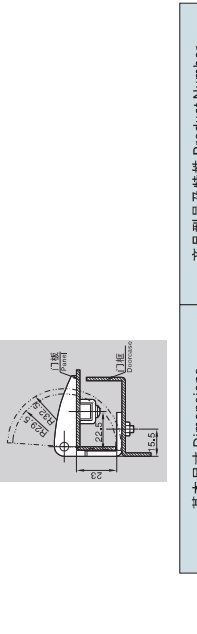
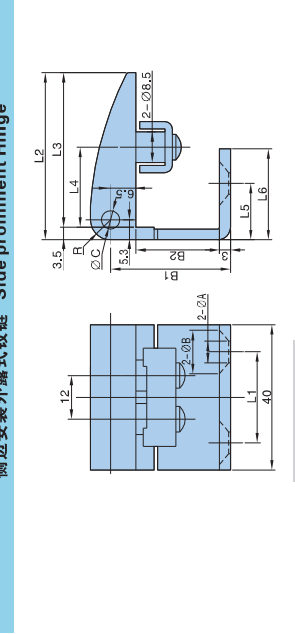


HL044



- 材质: 锌合金静铰链, 镀锌钢动铰链和安装板, 分不锈钢和镀锌钢
- 备注: 转动约180°
- Material/Zinc die-casting hinge, stainless steel and nickel plating steel pin are available.
- Remark: 180° hinge

侧边安装外露式铰链 Side prominent hinge



基本尺寸 Dimensions		产品型号及特性 Product Number		产品 单重(g) Weight	包装数 Lot								
H1	H2	H3	H4	L1	L2	L3	L4	ΦC	Φ	6	6	140	200
18	15.5	27.5	5.5	5.2	4.0	3.5	6.2	2.2	3	12	12	140	200
16	13	27	5.5	4.2	2.4	2.5	2.2	1.5	3	12	12	135	200
17.5	14	28	6.2	4.2	2.5	3.3	3.2	1.2	3	12	12	129	200

基本尺寸 Dimensions		产品型号及特性 Product Number		产品 单重(g) Weight	包装数 Lot							
L1	L2	L3	L4	L5	L6	B1	B2	ΦB	ΦC	R	产品 单重(g) Weight <td>包装数 Lot</td>	包装数 Lot
25	46	43	22.5	15.5	2.5	3.4	2.4	5	6	11	15.5	142
20	46	43	22.5	18	25.5	32	22.5	7	11	5.5	15.5	128
25	46	43	22.5	18	25	24.5	15	6	5	15.5	15.5	135

基本尺寸 Dimensions		产品型号及特性 Product Number		产品 单重(g) Weight	包装数 Lot								
H1	H2	H3	H4	L1	L2	L3	L4	ΦC	Φ	6	6	140	200
18	15.5	27.5	5.5	5.2	4.0	3.5	6.2	2.2	3	12	12	140	200
16	13	27	5.5	4.2	2.4	2.5	2.2	1.5	3	12	12	135	200
17.5	14	28	6.2	4.2	2.5	3.3	3.2	1.2	3	12	12	129	200