

# ZCT40S 60S 80S 120 210S



40S



60S



80S

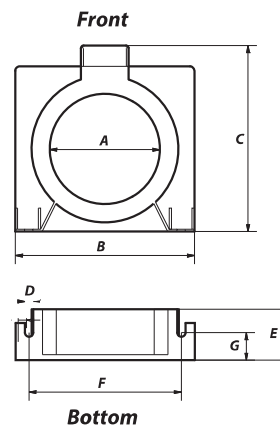


120S

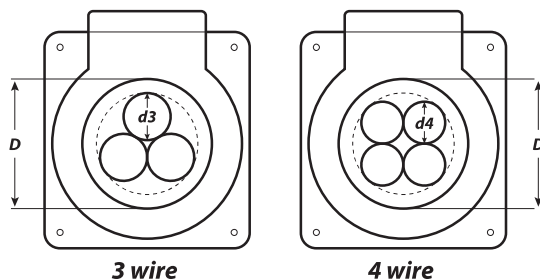


210S

## Case Dimensions



## Calculation to determine Inner Diameter of ZCT required



MODEL	D ZCT inner diameter (mm)	d3, 3wire Up till wire diameter (mm)	d4, 4wire Up till wire diameter (mm)
ZCT 40S	40	14	12
ZCT 60S	60	23	21
ZCT 80S	80	32	29
ZCT 120S	120	51	46
ZCT 210S	210	93	83

### Example:

For a single core CU / PVC insulated, non-sheathed 450 / 750 V 50mm<sup>2</sup> conductor, it's nominal overall diameter is 11.7mm. To pass 4 wires through the ZCT, we can use ZCT40S as the maximum diameter it can support is up till 12mm.

## DIMENSION (mm)

	ZCT Model				
	40S	60S	80S	120S	210S
A	40	60	80	120	210
B	89	105	130	180	310
C	94	110	135	195	311
D	6	6	6	6	6
E	37	37	37	37	37
F	75	87	112	159	292
G	27	27	27	27	18

## Ordering Information

MODEL	DESCRIPTION	WEIGHT
ZCT40S	40mm inner diameter	0.16 kg
ZCT60S	60mm inner diameter	0.20 kg
ZCT80S	80mm inner diameter	0.28 kg
ZCT120S	120mm inner diameter	0.57 kg
ZCT210S	210mm inner diameter	1.5 kg