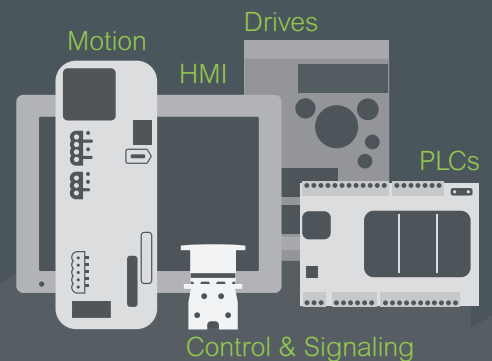




Introducing the **Easy Series**

Essential automation & control products

When just enough is just right!



Easy Harmony XA2

Control and signaling

Ø 22 mm, plastic pushbuttons, switches and pilot lights



Harmony

Discover Harmony

Advanced operator interface and industrial relays

Harmony operator interface and industrial relays enhance operational efficiency and equipment availability across industrial and building applications. **Harmony** includes intelligent connected products and edge terminals that visualize, gather and process data, enabling informed operator decisions.

Explore our offer

- [Harmony Push Buttons and Switches](#)
- [Harmony HMI Operator Terminals, IPC and EdgeBox](#)
- [Harmony Signaling Devices](#)
- [Harmony Electrical Relays](#)
- [Harmony Safety](#)

Life Is On

Schneider
Electric

General contents

Harmony™ Easy XA2

■ General presentation	page 2
Selection guide	page 4
■ General	
□ Presentation	page 8
□ Description	page 9
■ References	
□ Spring return pushbuttons	page 12
□ Mushroom head pushbuttons, spring return	page 12
□ Pushbuttons, push-push.....	page 12
□ Double-headed pushbuttons, spring return.....	page 13
□ Emergency switching off pushbuttons, push-pull and turn to release.....	page 13
□ Selector switches, with standard handle or with long handle.....	page 14
□ Key switches.....	page 14
□ Illuminated pushbuttons, flush push with integral LED	page 15
□ Bulbs and associated accessories for illuminated pushbuttons	page 16
□ Contact functions for all XA2 pushbuttons and switches	page 16
□ Pilot lights	page 17
□ Indicators.....	page 18
□ Empty control stations	page 19
■ Product reference index	page 20

Easy Harmony XA2:

- modular, plastic pushbuttons and switches with metallic-look ring,
- complete, plastic pilot lights with integral LED

Fit for purpose

All the products composing the Easy Harmony XA2 range have been designed to be used in numerous control and signaling applications:

- > customers can easily select the key functions for standard applications
- > their diameter, Ø 22 mm / 0.866 in. makes them suitable for standard OEM and panel builder applications.
- > with plastic material, they provide a solution for industrial applications demanding a high resistance to chemical agents.

Ease and comfort of choice

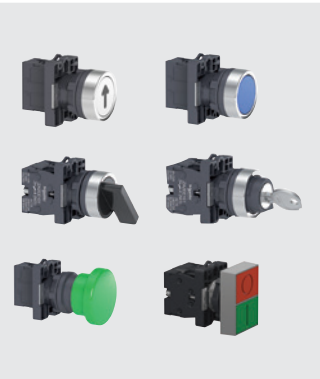
The range is available in the form of complete units. It involves:

- > modular, plastic pushbuttons and switches with metallic-look ring
The modular design allows flexible and simple setup for complete products: the right product can be chosen among various types of heads and 2 types of functions are proposed (contact and signaling)
- > complete pilot lights, provided with integral LED.

All products are fitted with screw clamp terminals allowing fast and easy connection.

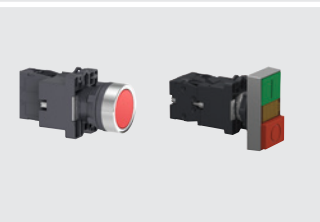
Contact functions

- Pushbuttons with spring return and push-push (marked or unmarked)
- Selector switches and key switches, 2 or 3 positions
- Emergency switching off pushbuttons with push-pull and turn to release
- Double-headed pushbuttons with spring return



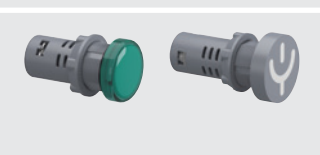
Contact and signaling functions

- Illuminated pushbuttons with integral LED, spring return and flush push
- Illuminated double-headed pushbuttons with integral LED, spring return



Signaling functions

- Pilot lights with integral LED
- Indicators with integral LED



Groomed ergonomics

- > Metallic-look ring on pushbuttons and switches gives a modern look
- > Ergonomic curve on the selector switches allows flexible operation



Metallic-look ring



Ergonomic curve



Pushbuttons and switches with metallic-look ring design

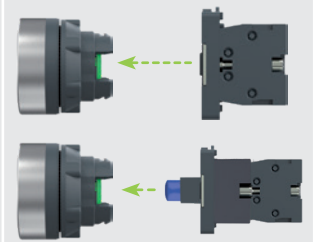
Easy installation

- > Installation of pushbuttons is simple and easy
- > Mounting by single nut to the control panel
- > Anti-rotation plate prevents the pushbutton head from rotation

- Single lock ring for mounting on control panel



- Clip-together component system for head, body, contacts, and LED light blocks



Proven robustness

- > Conforming to most demanding international standards and approvals
- > Tested and certified performance
- > Excellent resistance to mechanical shock and vibration
- > Supports extended temperature range from - 40° C to + 70° C



Helps customer to
improve the reliability

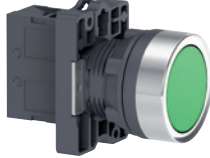
Service and availability


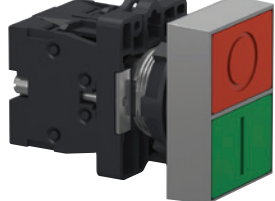
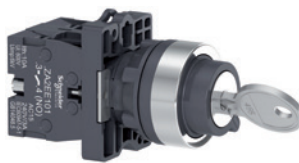
- > Supported by the service of Schneider Electric
- > Wide availability throughout an extensive distribution network

 Up to IP 65 degree of protection

Control and signaling units Ø 22

Easy Harmony XA2, plastic
Pushbuttons, switches and pilot lights

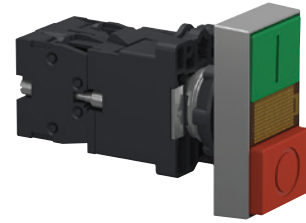
Type of products		Contact functions	
		Pushbuttons	Emergency switching off pushbuttons
			
			
Description of range		<ul style="list-style-type: none"> Pushbuttons, spring return: flush push, mushroom head, and push-push Emergency switching off pushbuttons: turn to release and push-pull 	
Features	Products	Complete units	
	Shape of head	Circular	
Drilling or cut-out for mounting		Ø 22 mm/0.866 in.	
Degree of protection		IP 65 conforming to standard IEC 60529	
International standards		IEC 60947-5-1, EN 60947-5-1, GB/T 14048.1-93, GB/14048.5-93	
Product certification		CCC, EAC, CE	
Cabling		Screw clamp terminal connections	
Mounting	Panel thickness	Ø 1 to 6 mm/ 0.04 to 0.24 in.	
	Type references	XA2EA●●/EA●●●●/EC●●/XA2ER●●/EH0●●	XA2ET●●/ES●●●
Pages		12	13

Type of products		Contact functions	
		Selector and key switches	Double-headed pushbuttons
			
			
Description of range		<ul style="list-style-type: none"> Selector switches, 2 or 3-position: standard or long handle Key switches Double-headed pushbuttons, spring return 	
Features	Products	Complete units	
	Shape of head	Circular	Rectangular
Drilling or cut-out for mounting		Ø 22 mm/0.866 in.	
Degree of protection		IP 54 conforming to standard IEC 60529 Selector switches: IP 65 Key switches: IP 54	IP 40 conforming to standard IEC 60529
International standards		IEC 60947-5-1, EN 60947-5-1, GB/T 14048.1-93, GB/14048.5-93	
Product certification		CCC, EAC, CE	CCC, CE, and EAC
Cabling		Screw clamp terminal connections	
Mounting	Panel thickness	Ø 1 to 6 mm/ 0.04 to 0.24 in.	
	Type references	XA2ED●●/EJ●●/EG●●	XA2EA7A3415
Pages		14	13

Control and signaling units Ø 22

Easy Harmony XA2, plastic
Pushbuttons, switches and pilot lights

Type of products	Contact and signaling functions	
	Illuminated pushbuttons	Illuminated double-headed pushbuttons



Description of range	■ Illuminated pushbuttons with integral LED, spring return: flush push	■ Illuminated double-headed pushbuttons with integral LED, spring return
Features	Products	Complete units
	Shape of head	Circular
Drilling or cut-out for mounting	Ø 22 mm/0.866 in.	
Degree of protection	IP 65 conforming to standard IEC 60529	IP 40 conforming to standard IEC 60529
International standards	IEC 60947-5-1, EN 60947-5-1, GB/T 14048.1-93, GB/14048.5-93	
Product certification	CCC, EAC, CE	CCC, CE, and EAC
Cabling	Screw clamp terminal connections	
Mounting	Panel thickness	Ø 1 to 6 mm/0.04 to 0.24 in.
Type references	XA2EW3●●●	XA2EW7L3741●5
Pages	15	13

Signaling functions	
Pilot lights	Indicators



■ Pilot lights with integral LED	■ Indicators with integral LED
Complete units	
Circular	
Ø 22 mm/0.866 in.	
IP 65 conforming to standard IEC 60529	IP 54 conforming to standard IEC 60529
IEC 60947-5-1, EN 60947-5-1, GB/T 14048.1-2012, GB/14048.5-2017	
CCC, CE	CCC, CE
Screw clamp terminal connections	
Ø 1 to 6 mm/0.04 to 0.24 in.	
XA2EV●●LC/EV●E●LC/EV●D●LC/EV●●34LC	XA2EV●34●PC
17	19

Presentation

The Easy Harmony XA2 range of Ø 22/0.866 in. plastic control and signaling units combines simplicity of installation, flexibility and robustness. It meets the requirements of the majority of industrial applications. The metallic-look ring design on the pushbuttons and switches gives them a modern look. These products are available in the form of complete units.

■ This range includes:

- Contact functions: pushbuttons, selector/key switches, Emergency switching off pushbuttons, and double-headed pushbuttons designed for parameter settings, adjustments, and start/stop control of machines and installations
- Contact and signaling functions: illuminated pushbuttons and double-headed illuminated pushbuttons designed for control and signaling functions
- Signaling functions: pilot lights and indicators designed for visual signaling

■ The pushbutton, switch control (illuminated and non-illuminated), and pilot light offer is both broad and comprehensive:

- Pushbuttons, spring return with flush push, marked or unmarked, or mushroom head
- Emergency stop pushbuttons Ø 40/1.575 in., Ø 30/1.181 in., and Ø 60/2.362 in. with 2 types of head: push-pull and turn to release
- Pilot lights, indicators, and illuminated pushbuttons with integral LED
- Selector switches with different types of operator: standard handle, long handle, or key
- Choice of heads: circular and double-head
- Connection type: screw clamp connector
- Various accessories

Installation

■ Easy Harmony XA2 products are both simple and quick to install:

- Mounting by a single nut to the control panel,
- Body/fixing collar simply clip on the head,
- Anti-loosening system for screw clamp terminals on contact blocks.

Environment

The performance features of the Easy Harmony XA2 range meets the following specifications:

■ Degrees of protection conforming to standard IEC 60529:

- IP 65 for pushbuttons, Emergency switching off pushbuttons, illuminated pushbuttons, and pilot lights
- IP 54 for key selector switch and indicators
- IP40 for double-headed pushbuttons



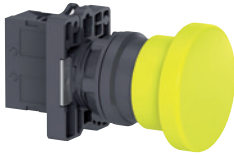

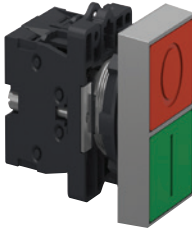
■ International standards:

- IEC 60947-5-1, EN 60947-5-1, GB/T 14048.1-93, GB/14048.5-93

■ Product certification:

- CCC, EAC, CE

For more technical information, please refer to the Schneider Electric website, Easy Harmony XA2 offer.

Complete units		Contact functions		
				
Pushbuttons, spring return	Type of push	Flush push, unmarked	Flush push, marked	Mushroom head
	Degree of protection	IP65	IP65	IP65
	Color	White, Black, Green, Yellow, Blue, and Red	Green, Black, White, and Red	Black, Green, Red, and Yellow
	Reference	XA2EA●1/EA42	XA2EA33●1/EA43●2	XA2EC●1/EC42/ER21
	Pages	11	11	11
				
Pushbuttons, spring return	Type of push	Push-push, unmarked		
	Degree of protection	IP65		
	Color	White, Black, Green, Yellow, Blue, and Red		
	Reference	XA2EH0●1/EH042		
	Pages	12		
				
Double-headed pushbuttons, spring return	Type of push	Flush push		
	Degree of protection	IP40		
	Color	Green and Red		
	Reference	XA2EA7A3415		
	Pages	12		
				
Emergency switching off pushbuttons	Type of push	Turn to release and push-pull (Ø 30 mm/1.181 in., Ø 40 mm/1.575 in., Ø 60 mm/1.362 in.)		
	Degree of protection	IP65		
	Color	Red and Black		
	Reference	XA2ET42/ES●42/ES422		
	Pages	12		

Complete units (continued)

Contact functions

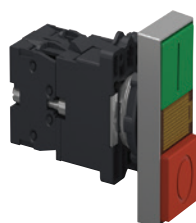


Selector switches and key switches	Type of push	Standard handle, 2 or 3 positions	Long handle, 2 or 3 positions	Key, 2 or 3 positions
	Degree of protection	IP65	IP65	IP54
	Reference	XA2ED●●	XA2EJ●●	XA2EG21/EG●3
	Page	13		

Contact and signaling functions



Illuminated pushbuttons, spring return	Type of push	Flush push
	Degree of protection	IP65
	LED	Integral LEDs 24, 220...230, or 380...400 V
	Color	White, Green, Red, Yellow, and Blue
	Reference	XA2EW3●B1/3●M1/ 3●Q1
	Pages	14



Double-headed pushbuttons, spring return with pilot light block	Type of push	Flush push
	Degree of protection	IP40
	LED	Integral LEDs 24 or 220...230 V
	Color	Red and Green
	Reference	XA2EW7L3741B5, XA2EW7L3741M5
	Pages	13

Complete units (continued)

Signaling functions



Pilot lights	Degree of protection	IP65
	LED	Integral LEDs 12 V, 24 V, 30 V, 48 V, 60...63.5 V, 110 V, 220...230 V, and 380...400 V
	Color	White, Green, Red, Amber, Blue, and Yellow
	Reference	XA2EV●●LC/EV●E●LC/EV●D●LC/EV●●34LC
	Pages	15



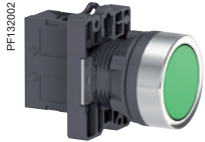
Indicators	Degree of protection	IP54
	LED	Integral LEDs 110 V, 220...230 V, and 380...400 V
	Color	Red and Green
	Reference	XA2EV●34●PC
	Pages	19

Control and signaling units Ø 22

Easy Harmony XA2, plastic

Spring return pushbuttons, marked and unmarked

Mushroom head pushbuttons, spring return



XA2EA31



XA2EA4342

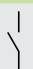
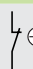








XA2EC51

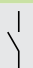
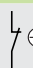



XA2EH021

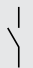
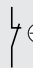

Spring return pushbuttons with flush push

Shape of head	Type of contacts	Color of push	Marking	Reference	Weight kg/lb
	 				
	NO NC				
Unmarked					
	1 -	White	-	XA2EA11	0.032/0.071
		Black	-	XA2EA21	0.032/0.071
		Green	-	XA2EA31	0.032/0.071
		Yellow	-	XA2EA51	0.032/0.071
		Blue	-	XA2EA61	0.032/0.071
	- 1	Red	-	XA2EA42	0.032/0.071
Marked					
	1 -	Green	"I"	XA2EA3311	0.032/0.071
	1 -	Black	"↑"	XA2EA3351	0.032/0.071
	1 -	White	"↑"	XA2EA3341	0.032/0.071
	- 1	Red	"O"	XA2EA4322	0.032/0.071
	- 1	Red	"STOP"	XA2EA4342	0.032/0.071

Mushroom head pushbuttons, spring return

Shape of head	Type of contacts	Color of push	Diameter Ø (mm)/ in.	Reference	Weight kg/lb
	 				
	NO NC				
	1 -	Black	40/1.575	XA2EC21	0.052/0.115
		Green	40/1.575	XA2EC31	0.052/0.115
	- 1	Red	40/1.575	XA2EC42	0.052/0.115
	1 -	Yellow	40/1.575	XA2EC51	0.052/0.115
		Black	60/2.362	XA2ER21	0.058/0.128

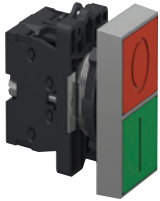
Pushbuttons, push-push with flush push

Shape of head	Type of contacts	Color of push	Reference	Weight kg/lb
	 			
	NO NC			
Complete unit				
	1 -	White	XA2EH011	0.04/0.088
		Black	XA2EH021	0.04/0.088
		Green	XA2EH031	0.04/0.088
		Red	XA2EH042	0.04/0.088
		Yellow	XA2EH051	0.04/0.088
		Blue	XA2EH061	0.04/0.088

Control and signaling units Ø 22

Easy Harmony XA2, plastic
 Double-headed pushbuttons, spring return
 Emergency switching off pushbuttons

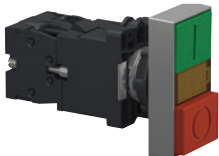
XA2E_CP20011_2



XA2EA7A3415

Double-headed pushbuttons, spring return							
Shape of head	Description	Type of contacts		Caps (1)		Reference	Weight kg/lb
				Marking	Background color		
		 NO	 NC				
Complete units							
	1 flush push, green	1	1	"I"	Green	XA2EA7A3415	0.048/0.106
	1 flush push, red			"O"	Red		

XA2E_CP20012_2



XA2EW7L3741●●

Double-headed pushbuttons with 1 white central pilot light block								
Shape of head	Description	Type of contacts		Caps (1)		Pilot light Voltage V	Reference	Weight kg/lb
				Marking	Background color			
		 NO	 NC					
Complete units								
	1 flush push, green	1	1	"I"	Green	24 ~	XA2EW7L3741B5	0.072/0.159
	1 flush push, red			"O"	Red			
	1 central pilot light block, yellow					220...230 ~	XA2EW7L3741M5	0.072/0.159



PFI32022



XA2ET42

Emergency switching off pushbuttons						
Shape of head	Type of push	Type of contacts	Diameter Ø (mm)/in.	Reference	Weight kg/lb	
		 NC				
	Push-pull	1	40/1.575	XA2ET42	0.088/0.194	
	Turn to release	1	30/1.181	XA2ES442	0.056/0.123	
			40/1.575	XA2ES542	0.058/0.128	
			60/2.362	XA2ES642	0.064/0.141	
			30/1.181	XA2ES422	0.056/0.123	

Note: For information on dimensions, please refer to the Schneider Electric website, Easy Harmony XA2 offer.
 (1) These caps are factory assembled and cannot be removed (risk of damage).

Control and signaling units Ø 22

Easy Harmony XA2, plastic
Selector switches, with standard or long handle
Key switches



XA2ED53

Selector switches, with standard handle or with long handle						
Shape of head	Type of push	Type of contacts		Number and type of positions	Reference	Weight kg/lb
		NO	NC			
	Standard handle	1	–	2 - stay put	XA2ED21	0.04/0.088
		1	1	2 - stay put	XA2ED25	0.054/0.119
		2	–	3 - stay put	XA2ED33	0.054/0.119
		2	–	3 - spring return from 2 sides	XA2ED53	0.054/0.119
	Long handle	1	–	2 - spring return	XA2ED41	0.041/0.090
		1	–	2 - stay put	XA2EJ21	0.041/0.090
		1	1	2 - stay put	XA2EJ25	0.041/0.090
		2	–	3 - stay put	XA2EJ33	0.055/0.121
		2	–	3 - spring return from 2 sides	XA2EJ53	0.055/0.121



XA2EG03

Key switches						
Shape of head	Type of push	Type of contacts		Number and type of positions	Reference	Weight kg/lb
		NO	NC			
	Key	1	–	2 - stay put, one side pull-out	XA2EG21	0.064/0.141
		2	–	2 - stay put, two sides pull-out	XA2EG43	0.078/0.172
		2	–	2 - spring return, one side pull-out	XA2EG63	0.078/0.172
		2	–	3 - spring return from 2 sides, middle pull-out	XA2EG73	0.078/0.172
		2	–	3 - stay put, middle pull-out	XA2EG33	0.078/0.172
		2	–	3 - stay put, 3 sides pull-out	XA2EG03	0.078/0.172

Note: For information on dimensions, please refer to the Schneider Electric website, Easy Harmony XA2 offer.

Control and signaling units Ø 22

Easy Harmony XA2, plastic

Illuminated pushbuttons with flush push


Bulbs for illuminated pushbuttons

Contact functions for all XA2 pushbuttons and switches

PF132051



XA2EW36B1

Illuminated pushbuttons with integral LED									
Shape of head	Type of push	Supply voltage V	Type of contacts		Color	Reference	Weight kg/lb		
			NO	NC					
	Flush push	24 ~	1	-	White	XA2EW31B1	0.056/0.123		
					Green	XA2EW33B1	0.056/0.123		
					Red	XA2EW34B1	0.056/0.123		
					Yellow	XA2EW35B1	0.056/0.123		
					Blue	XA2EW36B1	0.056/0.123		
		-	1	Red	XA2EW34B2	0.056/0.123			
		220-230 ~	1	-	1	-	White	XA2EW31M1	0.064/0.141
							Green	XA2EW33M1	0.064/0.141
							Red	XA2EW34M1	0.064/0.141
							Yellow	XA2EW35M1	0.064/0.141
							Blue	XA2EW36M1	0.064/0.141
		-	1	Red	XA2EW34M2	0.056/0.123			
		380-400 ~	1	-	1	-	White	XA2EW31Q1	0.064/0.141
							Green	XA2EW33Q1	0.064/0.141
							Red	XA2EW34Q1	0.064/0.141
Yellow	XA2EW35Q1						0.064/0.141		
Blue	XA2EW36Q1						0.064/0.141		
-	1	Red	XA2EW34Q2	0.056/0.123					

Note: For information on dimensions, please refer to the Schneider Electric website, Easy Harmony XA2 offer.

Control and signaling units Ø 22

Easy Harmony XA2, plastic

Illuminated pushbuttons with flush push

Bulbs for illuminated pushbuttons

Contact functions for all XA2 pushbuttons and switches



Bulbs with BA 9s base fitting and associated accessories

Description	Characteristics	Color	Sold in lots of	Unit reference	Weight kg/lb
LEDs	24 ~	White	10	DL1LED241	0.002/0.004
		Green	10	DL1LED243	0.002/0.004
		Red	10	DL1LED244	0.002/0.004
		Yellow	10	DL1LED245	0.002/0.004
		Blue	10	DL1LED246	0.002/0.004

Description	Application	Sold in lots of	Unit reference	Weight kg/lb
Bezel tool	Tightening head fixing nut	1	ZB5AZ905	0.016/0.035
Anti-rotation plate	Prevents head from rotation	10	ZB5AZ902	0.008/0.018

Contact functions (for all XA2 pushbuttons and switches)

Screw clamp terminal connections

Description	To be used with	Type of contacts		Sold in lots of	Unit reference	Weight kg/lb
		NO	NC			
Contact blocks	All XA2 pushbuttons and switches	1	–	1	ZA2EE101	0.014/0.031
		–	1	1	ZA2EE102	0.014/0.031

XA2E_CP20053_2



XA2EVB4LC

XA2E_CP20056_2



XA2EVC6LC

XA2E_CP20054_2



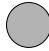
XA2EVE4LC

Pilot lights with integral LED, screw clamp terminal connection

Shape of head	Supply voltage V	Color of lens	Sold in lots of	Reference	Weight kg/lb
●	12 ~	White	10	XA2EVJ1LC	0.019/0.041
		Green	10	XA2EVJ3LC	0.019/0.041
		Red	10	XA2EVJ4LC	0.019/0.041
		Amber	10	XA2EVJ5LC	0.019/0.041
		Blue	10	XA2EVJ6LC	0.019/0.041
		Yellow	10	XA2EVJ8LC	0.019/0.041
	24 ~	White	10	XA2EVB1LC	0.019/0.041
		Green	10	XA2EVB3LC	0.019/0.041
		Red	10	XA2EVB4LC	0.019/0.041
		Amber	10	XA2EVB5LC	0.019/0.041
Blue		10	XA2EVB6LC	0.019/0.041	
Yellow		10	XA2EVB8LC	0.019/0.041	
Green/Red		5	XA2EVB34LC	0.022/0.049	
30 ~	White	10	XA2EVC1LC	0.019/0.041	
	Green	10	XA2EVC3LC	0.019/0.041	
	Red	10	XA2EVC4LC	0.019/0.041	
	Amber	10	XA2EVC5LC	0.019/0.041	
	Blue	10	XA2EVC6LC	0.019/0.041	
	Yellow	10	XA2EVC8LC	0.019/0.041	
48 ~	White	10	XA2EVE1LC	0.019/0.041	
	Green	10	XA2EVE3LC	0.019/0.041	
	Red	10	XA2EVE4LC	0.019/0.041	
	Amber	10	XA2EVE5LC	0.019/0.041	
	Blue	10	XA2EVE6LC	0.019/0.041	
	Yellow	10	XA2EVE8LC	0.019/0.041	
60...63.5 ~	White	10	XA2EVEE1LC	0.019/0.041	
	Green	10	XA2EVEE3LC	0.019/0.041	
	Red	10	XA2EVEE4LC	0.019/0.041	
	Amber	10	XA2EVEE5LC	0.019/0.041	
	Blue	10	XA2EVEE6LC	0.019/0.041	
	Yellow	10	XA2EVEE8LC	0.019/0.041	

Note: For information on dimensions, please refer to the Schneider Electric website, Easy Harmony XA2 offer.

Pilot lights with integral LED, screw clamp terminal connection

Shape of head	Supply voltage V	Color of lens	Sold in lots of	Reference	Weight kg/lb
	110 ~	White	10	XA2EVF1LC	0.019/0.041
		Green	10	XA2EVF3LC	0.019/0.041
		Red	10	XA2EVF4LC	0.019/0.041
		Amber	10	XA2EVF5LC	0.019/0.041
		Blue	10	XA2EVF6LC	0.019/0.041
		Yellow	10	XA2EVF8LC	0.019/0.041
	220 ---	White	10	XA2EVM1LC	0.019/0.041
		Green	10	XA2EVM3LC	0.019/0.041
		Red	10	XA2EVM4LC	0.019/0.041
		Amber	10	XA2EVM5LC	0.019/0.041
		Blue	10	XA2EVM6LC	0.019/0.041
		Yellow	10	XA2EVM8LC	0.019/0.041
	220-230 ~	White	10	XA2EVM1LC	0.019/0.041
		Green	10	XA2EVM3LC	0.019/0.041
		Red	10	XA2EVM4LC	0.019/0.041
Amber		10	XA2EVM5LC	0.019/0.041	
Blue		10	XA2EVM6LC	0.019/0.041	
Yellow		10	XA2EVM8LC	0.019/0.041	
380...400 ~	White	10	XA2EVQ1LC	0.019/0.041	
	Green	10	XA2EVQ3LC	0.019/0.041	
	Red	10	XA2EVQ4LC	0.019/0.041	
	Amber	10	XA2EVQ5LC	0.019/0.041	
	Blue	10	XA2EVQ6LC	0.019/0.041	
	Yellow	10	XA2EVQ8LC	0.019/0.041	
Green/Red	5	XA2EVM34LC	0.022/0.049		



XA2EVM5LC



XA2EVQ8LC



XA2EVF34SPC



XA2EVF34BPC



XA2EVF34GPC

Indicators, screw clamp terminal connection

Shape of head	Indicator type	Supply voltage V	Color of lens	Sold in lots of	Reference	Weight kg/lb
	Isolation switch	110 ~	Green/Red	5	XA2EVF34SPC	0.027/0.058
		220...230 ~	Green/Red	5	XA2EVM34SPC	0.027/0.058
		380...400 ~	Green/Red	5	XA2EVQ34SPC	0.027/0.058
	Circuit breaker	110 ~	Green/Red	5	XA2EVF34BPC	0.027/0.058
		220...230 ~	Green/Red	5	XA2EVM34BPC	0.027/0.058
		380...400 ~	Green/Red	5	XA2EVQ34BPC	0.027/0.058
	Ground	110 ~	Green/Red	5	XA2EVF34GPC	0.027/0.058
		220...230 ~	Green/Red	5	XA2EVM34GPC	0.027/0.058
		380...400 ~	Green/Red	5	XA2EVQ34GPC	0.027/0.058

Note: For information on dimensions, please refer to the Schneider Electric website, Easy Harmony XA2 offer.

Control and signaling units Ø 22

Easy Harmony XA2, plastic

Empty control stations for XA2 pushbuttons, switches,
and pilot lights

XALB01C



XALB03C

Empty control stations

Description	Characteristics	Dimension w x h x d mm/in.	Number of cut-outs	Reference	Weight kg/lb
Light gray "RAL 7035" cover Dark gray "RAL 7016" base	IP65	68 x 86 x 51/ 2.68 x 3.39 x 2	1	XALB01C	0.100/0.220
		68 x 104 x 51/ 2.68 x 4.1 x 2	2	XALB02C	0.150/0.330
		68 x 86 x 51/ 2.68 x 3.39 x 2	3	XALB03C	0.200/0.440
Yellow "RAL 1021" cover Dark gray "RAL 7016" base	IP65	68 x 86 x 51/ 2.68 x 3.39 x 2	1	XALB01YC	0.100/0.220

D			
DL1LED241	16	XA2EVC6LC	17
DL1LED243	16	XA2EVC8LC	17
DL1LED244	16	XA2EVE1LC	17
DL1LED245	16	XA2EVE3LC	17
DL1LED246	16	XA2EVE4LC	17
		XA2EVE5LC	17
		XA2EVE6LC	17
		XA2EVE8LC	17
		XA2EVEE1LC	17
		XA2EVEE3LC	17
		XA2EVEE4LC	17
		XA2EVEE5LC	17
		XA2EVEE6LC	17
		XA2EVEE8LC	17
		XA2EVF1LC	18
		XA2EVF3LC	18
		XA2EVF4LC	18
		XA2EVF5LC	18
		XA2EVF6LC	18
		XA2EVF8LC	18
		XA2EVF34BPC	18
		XA2EVF34GPC	18
		XA2EVF34SPC	18
		XA2EVJ1LC	17
		XA2EVJ3LC	17
		XA2EVJ4LC	17
		XA2EVJ5LC	17
		XA2EVJ6LC	17
		XA2EVJ8LC	17
		XA2EVM1LC	18
		XA2EVM3LC	18
		XA2EVM4LC	18
		XA2EVM5LC	18
		XA2EVM6LC	18
		XA2EVM8LC	18
		XA2EVM34BPC	18
		XA2EVM34GPC	18
		XA2EVM34LC	18
		XA2EVM34SPC	18
		XA2EVMD1LC	18
		XA2EVMD3LC	18
		XA2EVMD4LC	18
		XA2EVMD5LC	18
		XA2EVMD6LC	18
		XA2EVMD8LC	18
		XA2EVQ1LC	18
		XA2EVQ3LC	18
		XA2EVQ4LC	18
		XA2EVQ5LC	18
		XA2EVQ6LC	18
		XA2EVQ8LC	18
		XA2EVQ34BPC	18
		XA2EVQ34GPC	18
		XA2EVQ34SPC	18
		XA2EW7L3741B5	13
		XA2EW7L3741M5	13
		XA2EW31B1	15
		XA2EW31M1	15
		XA2EW31Q1	15
		XA2EW33B1	15
		XA2EW33M1	15
		XA2EW33Q1	15
		XA2EW34B1	15
		XA2EW34B2	15
		XA2EW34M1	15
		XA2EW34M2	15
		XA2EW34Q1	15
		XA2EW34Q2	15
		XA2EW35B1	15
		XA2EW35M1	15
		XA2EW35Q1	15
		XA2EW36B1	15
		XA2EW36M1	15
		XA2EW36Q1	15
		XALB01C	19
		XALB01YC	19
		XALB02C	19
		XALB03C	19
		Z	
		ZA2EE101	16
		ZA2EE102	16
		ZB5AZ902	16
		ZB5AZ905	16

Life Is On



Learn more about our products at
www.schneider-electric.com

The information provided in this documentation contains general descriptions and/or technical characteristics of the performance of the products contained herein. This documentation is not intended as a substitute for and is not to be used for determining suitability or reliability of these products for specific user applications. It is the duty of any such user or integrator to perform the appropriate and complete risk analysis, evaluation and testing of the products with respect to the relevant specific application or use thereof. Neither Schneider Electric nor any of its affiliates or subsidiaries shall be responsible or liable for misuse of the information contained herein.

Design: Schneider Electric
Photos: Schneider Electric

Schneider Electric Industries SAS

Head Office
35, rue Joseph Monier - CS 30323
F-92500 Rueil-Malmaison Cedex
France

DIA5ED2140104EN
January 2021 - V5.0