



BanFlex[®]

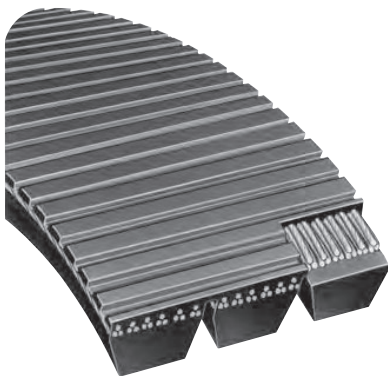


The small cross section of the BanFlex[®] belts makes them the preferred choice where short center distances and small diameter sheaves are required on compact equipment designs. The 60° sidewall angle and precision molded, seamless construction allows for precise belt-to-sheave meshing in high speed applications up to 10,000 RPM.

- Precision cast, seamless polyurethane body for maximum power transmission capability at high speeds.
- Polyester tensile member is treated to insure length stability and insure superior resistance to fatigue.
- Polyurethane ribs dissipate heat and assure lateral rigidity while providing longitudinal flexibility.

Refer to pages 49 and 50 for size and list price information.

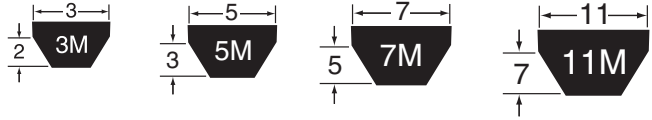
BanFlex[®] Combo



Ideally suited for short center distances and small diameter pulleys, BanFlex[®] Combos' banded construction minimizes or eliminates the turnover problem normally associated with small cross section belts. The ribbed construction provides superior flexibility while maintaining lateral stability.

- Precision molded, seamless polyurethane ribs provide maximum resistance to oil and traditional lubricants with virtually vibration free operation.
- Treated polyester tensile cords resist fatigue and stretch as well as providing exceptional length stability and drive uniformity.
- Polyamid tie band prevents belt whip under impulse loads.
- Polyurethane ribs on the back of the belt provide rigidity across the width of the belt and dissipate heat, leading to longer belt life.

Refer to pages 51 through 53 for size and list price information.



Width and height dimensions are in mm.

3M

Part Number	Weight* (Lbs.)	Effective Outside Length (mm)	Part Number	Weight* (Lbs.)	Effective Outside Length (mm)
3M180	0.003	180	3M375	0.006	375
3M185	0.003	185	3M387	0.006	387
3M190	0.003	190	3M400	0.006	400
3M195	0.003	195	3M412	0.006	412
3M200	0.003	200	3M425	0.007	425
3M206	0.003	206	3M437	0.007	437
3M212	0.003	212	3M450	0.007	450
3M218	0.003	218	3M462	0.007	462
3M224	0.003	224	3M475	0.008	475
3M230	0.004	230	3M487	0.008	487
3M236	0.004	236	3M500	0.008	500
3M243	0.004	243	3M515	0.008	515
3M250	0.004	250	3M530	0.009	530
3M258	0.004	258	3M545	0.009	545
3M265	0.004	265	3M560	0.009	560
3M272	0.004	272	3M580	0.010	580
3M280	0.004	280	3M600	0.010	600
3M290	0.004	290	3M615	0.010	615
3M300	0.004	300	3M630	0.011	630
3M307	0.004	307	3M650	0.011	650
3M315	0.005	315	3M670	0.011	670
3M325	0.005	325	3M690	0.012	690
3M335	0.005	335	3M710	0.012	710
3M345	0.005	345	3M730	0.013	730
3M355	0.005	355	3M750	0.013	750
3M365	0.005	365			

5M

Part Number	Weight* (Lbs.)	Effective Outside Length (mm)	Part Number	Weight* (Lbs.)	Effective Outside Length (mm)
5M280	0.016	280	5M670	0.026	670
5M290	0.016	290	5M690	0.027	690
5M300	0.017	300	5M710	0.028	710
5M307	0.017	307	5M730	0.028	730
5M315	0.017	315	5M750	0.029	750
5M325	0.017	325	5M775	0.029	775
5M335	0.017	335	5M800	0.030	800
5M345	0.018	345	5M805	0.030	805
5M355	0.018	355	5M825	0.030	825
5M365	0.018	365	5M850	0.031	850
5M375	0.018	375	5M875	0.031	875
5M387	0.018	387	5M900	0.032	900
5M400	0.019	400	5M925	0.033	925
5M412	0.019	412	5M950	0.034	950
5M425	0.019	425	5M975	0.034	975
5M437	0.020	437	5M1000	0.035	1000
5M450	0.020	450	5M1030	0.036	1030
5M462	0.020	462	5M1060	0.037	1060
5M475	0.020	475	5M1090	0.039	1090
5M487	0.021	487	5M1120	0.039	1120
5M500	0.021	500	5M1150	0.040	1150
5M515	0.021	515	5M1180	0.041	1180
5M518	0.021	518	5M1220	0.042	1220
5M530	0.022	530	5M1250	0.043	1250
5M545	0.023	545	5M1280	0.044	1280
5M560	0.023	560	5M1320	0.045	1320
5M580	0.024	580	5M1360	0.047	1360
5M600	0.024	600	5M1400	0.049	1400
5M615	0.025	615	5M1450	0.051	1450
5M630	0.025	630	5M1500	0.053	1500
5M650	0.025	650	5M1850	0.065	1850

* Weights shown are approximate.

To find an authorized BANDO distributor, go to www.bandousa.com or call 1-800-829-6612



7M

Part Number	Weight* (Lbs.)	Effective Outside Length (mm)	Part Number	Weight* (Lbs.)	Effective Outside Length (mm)
7M450	0.028	450	7M1090	0.067	1090
7M500	0.031	500	7M1120	0.069	1120
7M515	0.032	515	7M1150	0.071	1150
7M535	0.033	535	7M1180	0.073	1180
7M545	0.034	545	7M1220	0.075	1220
7M560	0.035	560	7M1250	0.077	1250
7M580	0.036	580	7M1280	0.079	1280
7M600	0.037	600	7M1320	0.081	1320
7M615	0.038	615	7M1360	0.084	1360
7M630	0.039	630	7M1400	0.086	1400
7M650	0.040	650	7M1450	0.090	1450
7M670	0.042	670	7M1500	0.093	1500
7M690	0.043	690	7M1550	0.096	1550
7M710	0.044	710	7M1600	0.099	1600
7M730	0.045	730	7M1650	0.102	1650
7M750	0.046	750	7M1700	0.105	1700
7M775	0.048	775	7M1750	0.108	1750
7M800	0.049	800	7M1800	0.111	1800
7M825	0.051	825	7M1850	0.114	1850
7M850	0.052	850	7M1900	0.117	1900
7M875	0.054	875	7M1950	0.120	1950
7M900	0.056	900	7M2000	0.123	2000
7M925	0.057	925	7M2060	0.127	2060
7M950	0.059	950	7M2120	0.131	2120
7M975	0.060	975	7M2180	0.135	2180
7M1000	0.062	1000	7M2240	0.138	2240
7M1030	0.064	1030	7M2300	0.142	2300
7M1060	0.065	1060			

11M

Part Number	Weight* (Lbs.)	Effective Outside Length (mm)	Part Number	Weight* (Lbs.)	Effective Outside Length (mm)
11M710	0.086	710	11M1280	0.155	1280
11M730	0.089	730	11M1320	0.160	1320
11M750	0.091	750	11M1360	0.165	1360
11M775	0.094	775	11M1400	0.170	1400
11M800	0.097	800	11M1450	0.176	1450
11M825	0.100	825	11M1500	0.182	1500
11M850	0.103	850	11M1550	0.188	1550
11M875	0.106	875	11M1600	0.194	1600
11M900	0.109	900	11M1650	0.200	1650
11M925	0.112	925	11M1700	0.206	1700
11M950	0.115	950	11M1750	0.212	1750
11M975	0.118	975	11M1800	0.218	1800
11M1000	0.121	1000	11M1850	0.224	1850
11M1030	0.125	1030	11M1900	0.230	1900
11M1060	0.129	1060	11M1950	0.236	1950
11M1090	0.132	1090	11M2000	0.243	2000
11M1120	0.136	1120	11M2060	0.250	2060
11M1150	0.139	1150	11M2120	0.257	2120
11M1180	0.143	1180	11M2180	0.264	2180
11M1220	0.148	1220	11M2240	0.272	2240
11M1250	0.152	1250	11M2300	0.279	2300

* Weights shown are approximate.

For intermediate sizes not shown, consult BANDO for availability and price.